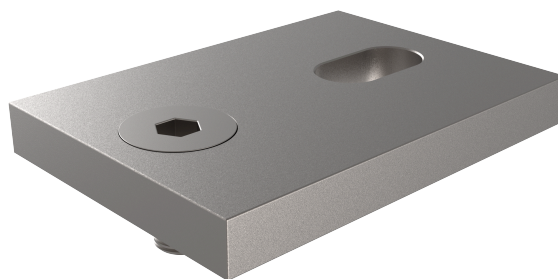


# SOPORTE SUELO - AR SOPSU

# AR SOPSU

FICHA TÉCNICA

## Producto



### Descripción

- Componente de la línea de vida ALURAIL.
- Su principal misión es fijar la línea de vida a distintas estructuras.

### Norma

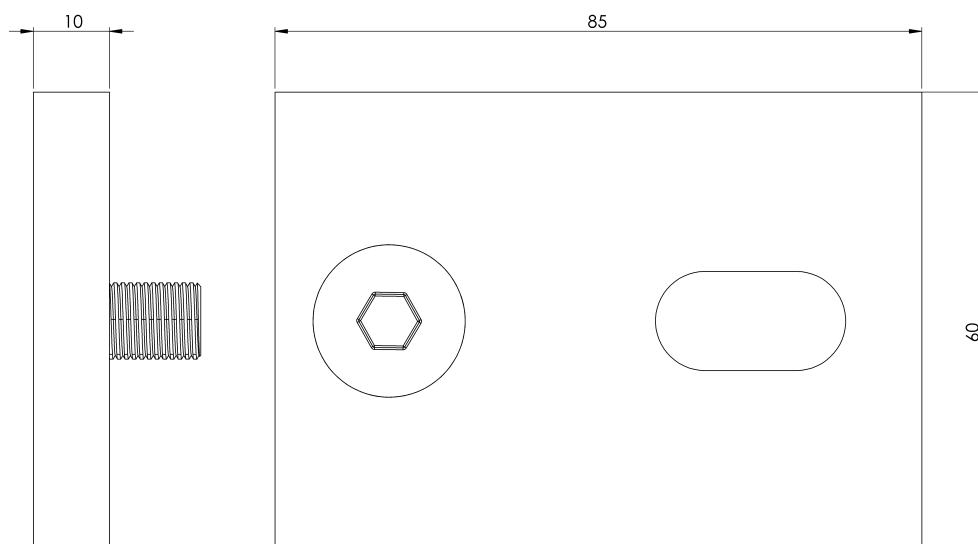
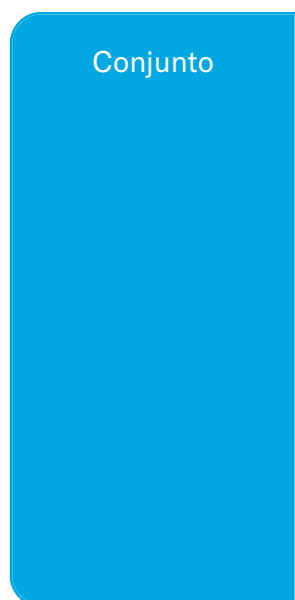
EN 795 Tipo D

## CARACTERÍSTICAS

### Características generales

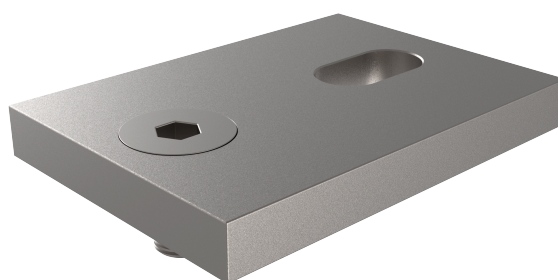
Referencia	203007400007
Material	Acero Inoxidable
Peso	0,35 Kg
Dimensiones	60x85x8 mm

# PLANOS



# AR SOPSU

## Product



### Description

- Component of the ALURAIL lifeline.
- Its main task is to fix the lifeline to various structures.

### Standard

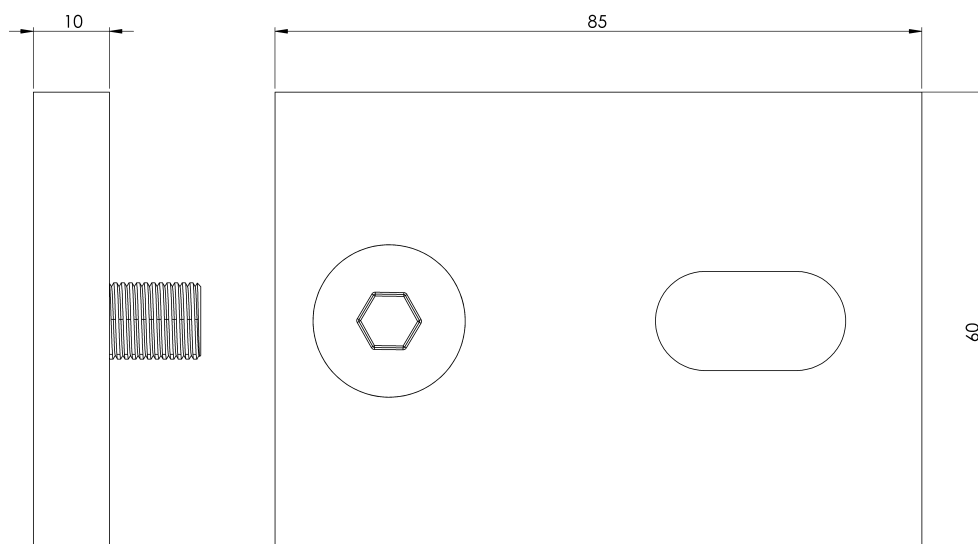
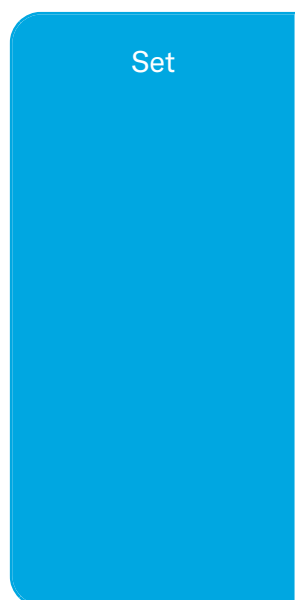
EN 795 Type D

## CHARACTERISTICS

### General characteristics

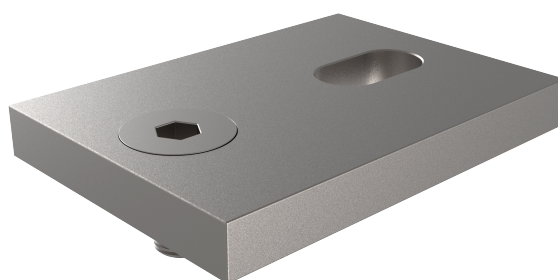
Reference	203007400007
Material	Stainless Steel
Weight	0,35 Kg
Dimensions	60x85x8 mm

## PLANS



# AR SOPSU

Prodotto



## Descrizione

- Componente della linea di vita ALURAIL.
- Il suo compito principale è quello di fissare la linea di vita a varie strutture.

## Standard

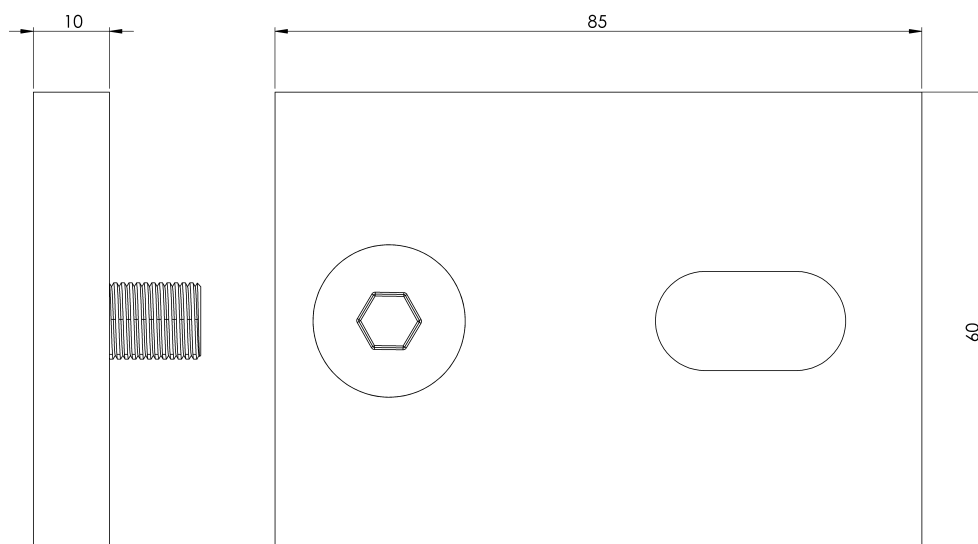
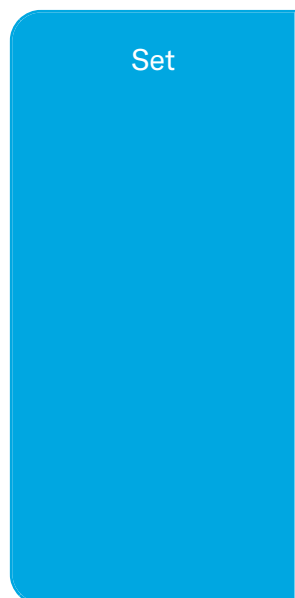
EN 795 Tipo D

## CARATTERISTICHE

### Caratteristiche generali

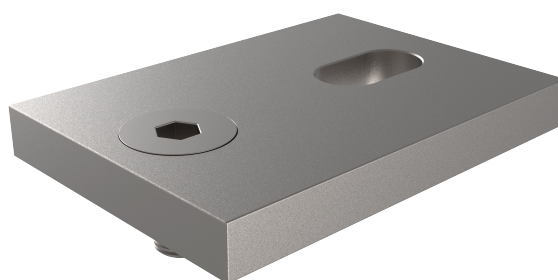
Riferimento	203007400007
Materiale	Acciaio inox
Peso	0,35 Kg
Dimensioni	60x85x8 mm

# PIANI



# AR SOPSU

## Produto



### Descrição

- Componente da linha de vida ALURAIL.
- A sua principal função é fixar a linha de vida a várias estruturas.

### Padrão

EN 795 Tipo D

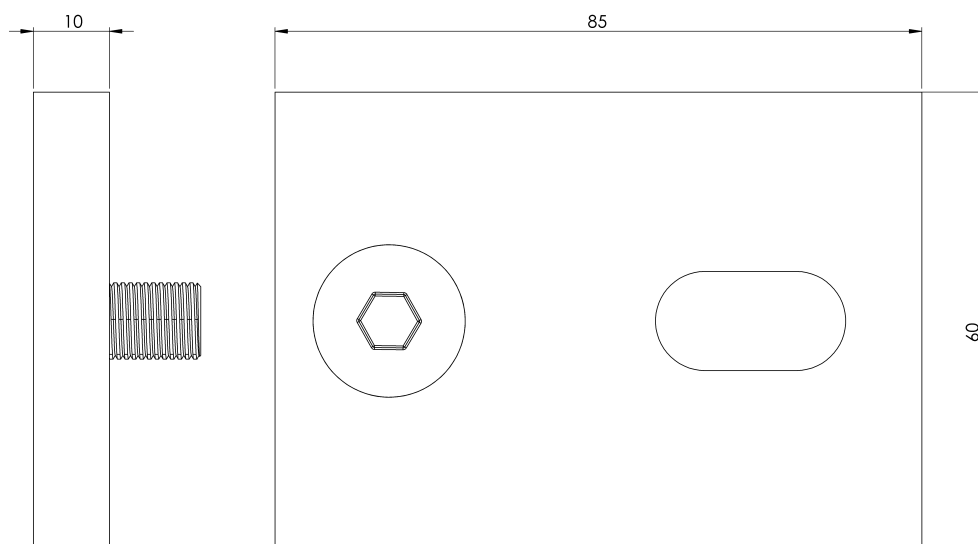
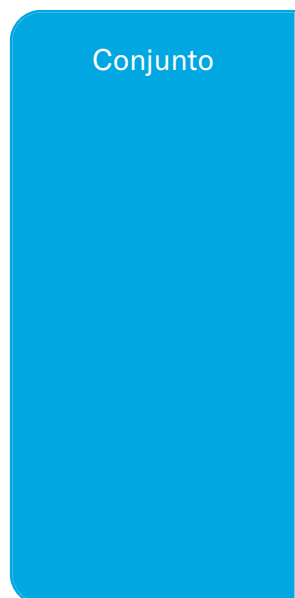
## CARACTERÍSTICAS

### Caraterísticas gerais

Referência	203007400007
Material	Aço inoxidável
Peso	0,35 kg
Dimensões	60x85x8 mm

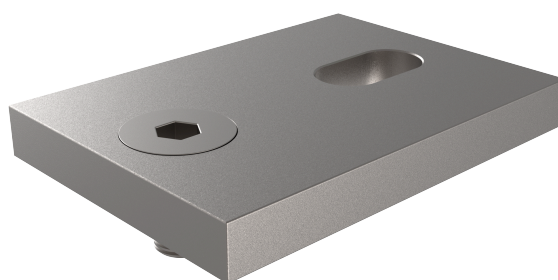


# PLANOS



# AR SOPSU

## Produit



### Description

- Composant de la ligne de vie ALURAIL.
- Sa tâche principale est de fixer la ligne de vie à différentes structures.

### Standard

EN 795 Type D

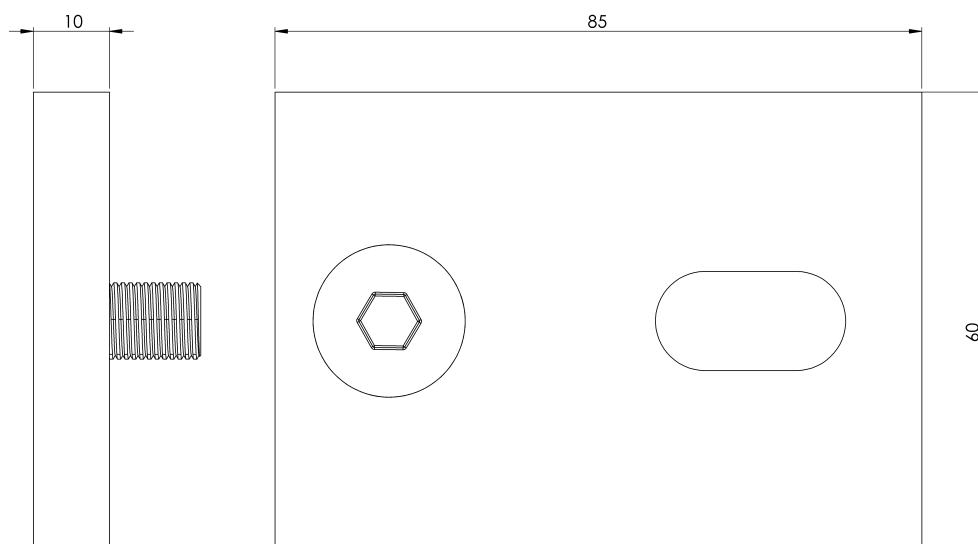
## CARACTÉRISTIQUES

### Caractéristiques générales

Référence	203007400007
Matériel	Acier inoxydable
Poids	0,35 Kg
Dimensions	60x85x8 mm

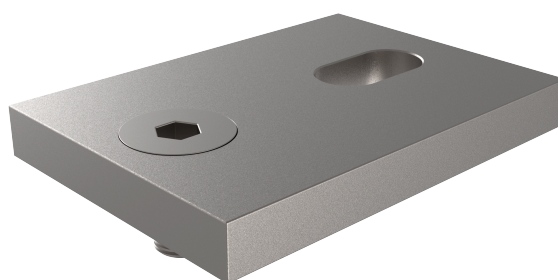
## PLANS

Set (jeu de mots)



# AR SOPSU

## Produkt



### Beschreibung

- Bestandteil der ALURAIL-Rettungsleine.
- Seine Hauptaufgabe besteht darin, die Rettungsleine an verschiedenen Strukturen zu befestigen.

### Standard

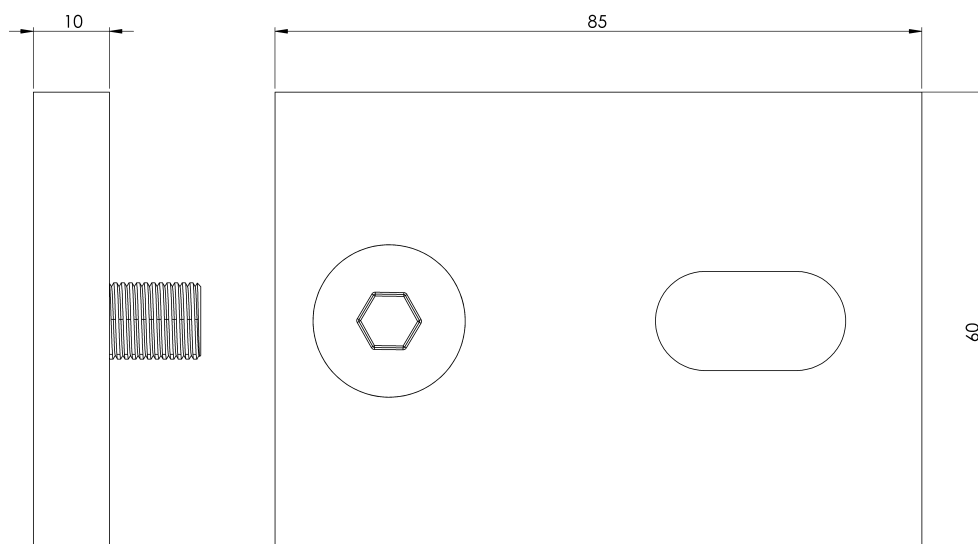
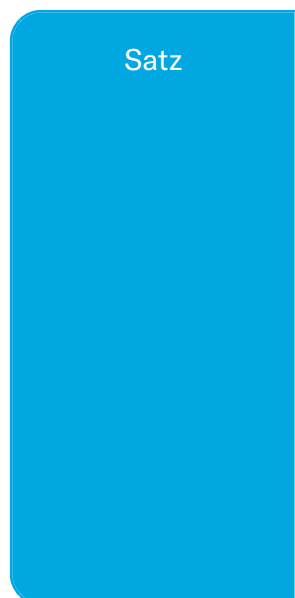
EN 795 Typ D

## EIGENSCHAFTEN

### Allgemeine Merkmale

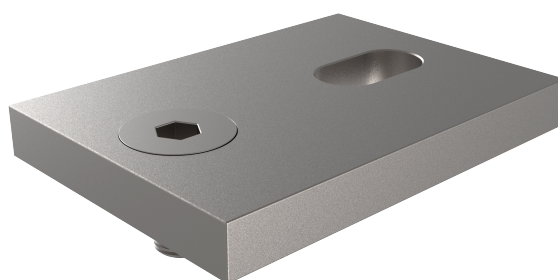
Referenz	203007400007
Material	Rostfreier Stahl
Gewicht	0,35 kg
Abmessungen	60x85x8 mm

# PLANEN



# AR SOPSU

Produkt



Opis

- Element linii życia ALURAIL.
- Jego głównym zadaniem jest mocowanie linii życia do różnych konstrukcji.

Standard

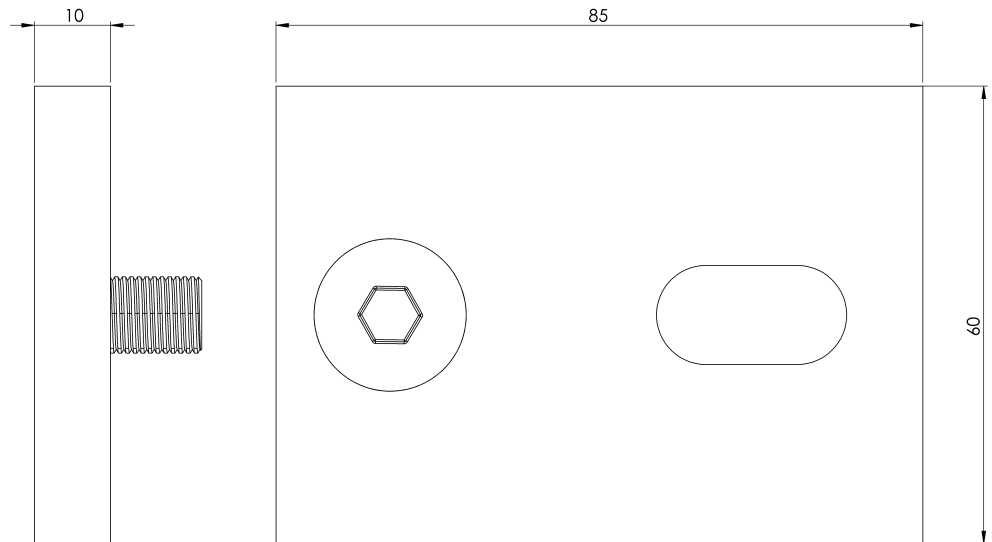
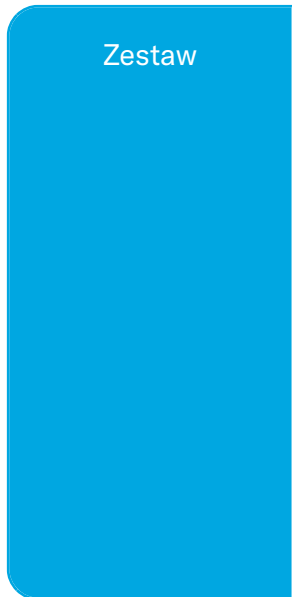
EN 795 Typ D

## CHARAKTERYSTYKA

Ogólna  
charakterystyka

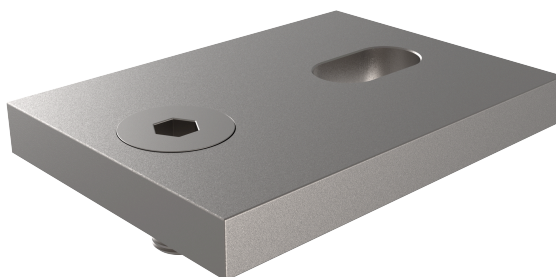
Odniesienie	203007400007
Materiał	Stal nierdzewna
Waga	0,35 kg
Wymiary	60x85x8 mm

# PLANY



# AR SOPSU

## Termék



### Leírás

- Az ALURAIL életrajzi eleme.
- Fő feladata a mentőkötél rögzítése a különböző szerkezetekhez.

### Standard

EN 795 D típus

## JELLEMZŐK

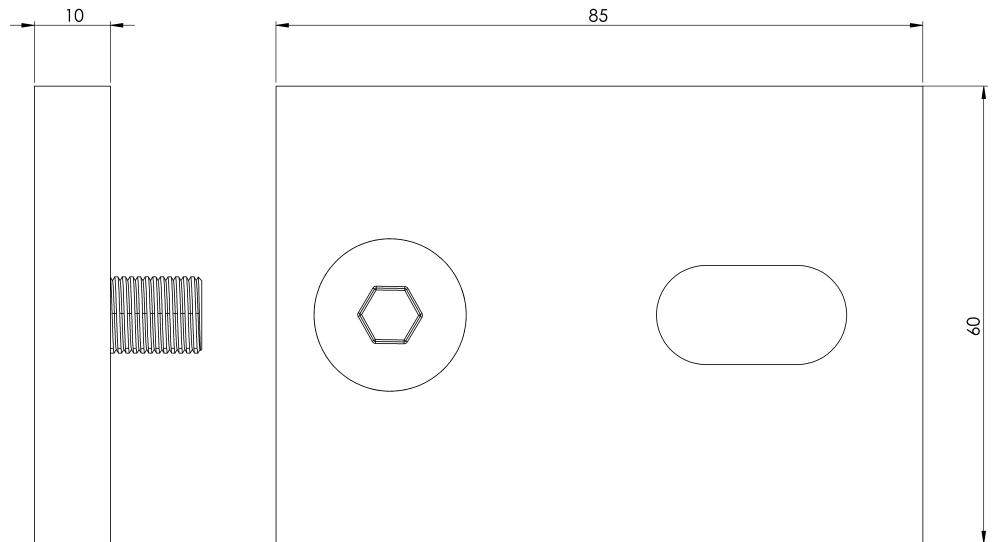
### Általános jellemzők

Hivatkozás	203007400007
Anyag	Rozsdamentes acél
Súly	0,35 kg
Méret	60x85x8 mm



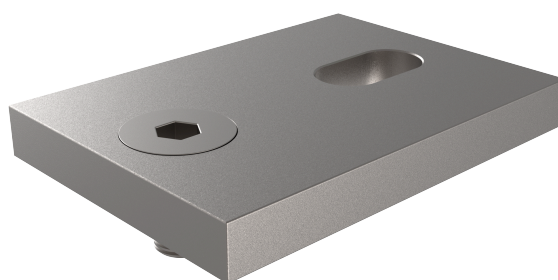
## TERVEK

Állítsa be a



# AR SOPSU

## Produto



### Descrição

- Componente da linha de vida ALURAIL.
- Sua principal tarefa é fixar a linha de vida em várias estruturas.

### Padrão

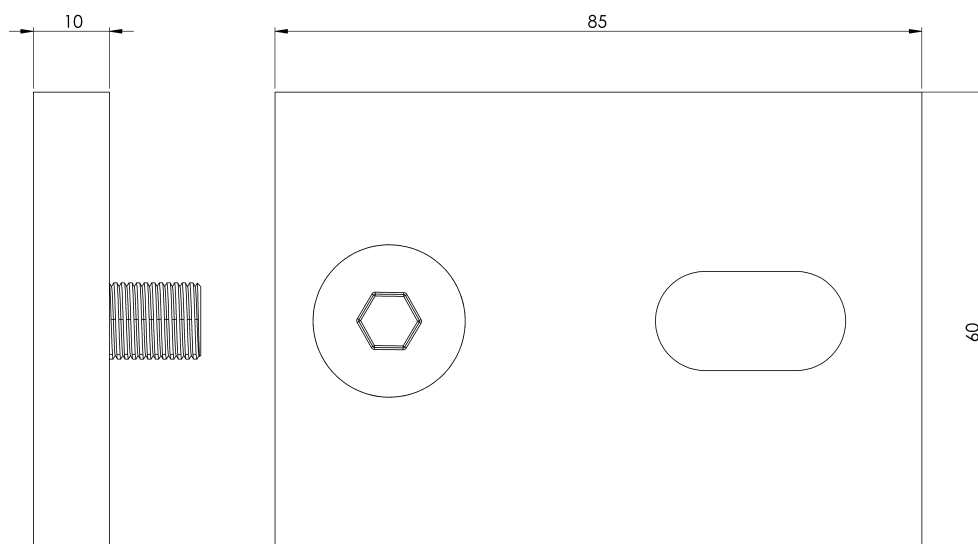
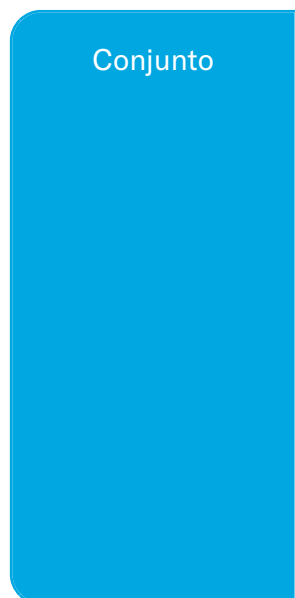
EN 795 Tipo D

## CARACTERÍSTICAS

### Características gerais

Referência	203007400007
Material	Aço inoxidável
Peso	0,35 kg
Dimensões	60x85x8 mm

# PLANOS



# AR SOPSU

Продукт



## Описание

- Компонент на спасителната линия ALURAIL.
- Основната му задача е да закрепва спасителното въже към различни конструкции.

## Стандартен

EN 795 Тип D

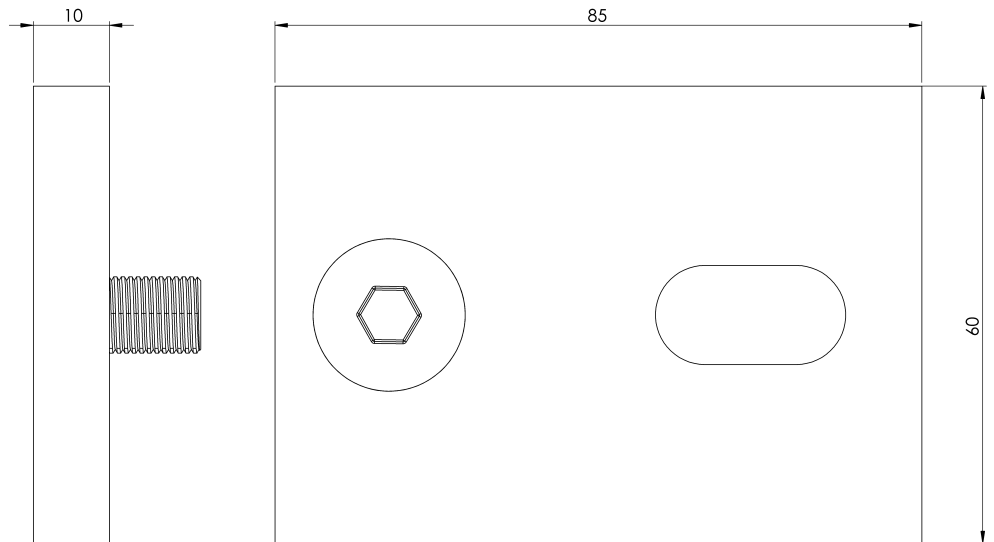
# ХАРАКТЕРИСТИКИ

## Общи характеристики

Справка	203007400007
Материал	Неръждаема стомана
Тегло	0,35 кг
Размери	60x85x8 мм

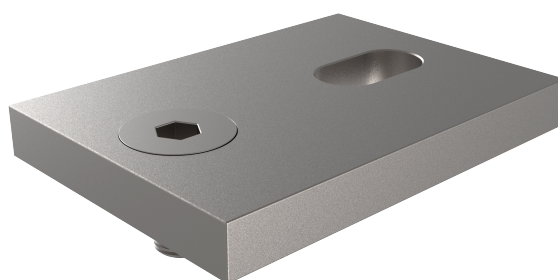
# ПЛАНОВЕ

Задайте



# AR SOPSU

## Produkt



### Beskrivning

- Komponent i ALURAIL-livlinan.
- Dess huvuduppgift är att fästa livlinan i olika strukturer.

### Standard

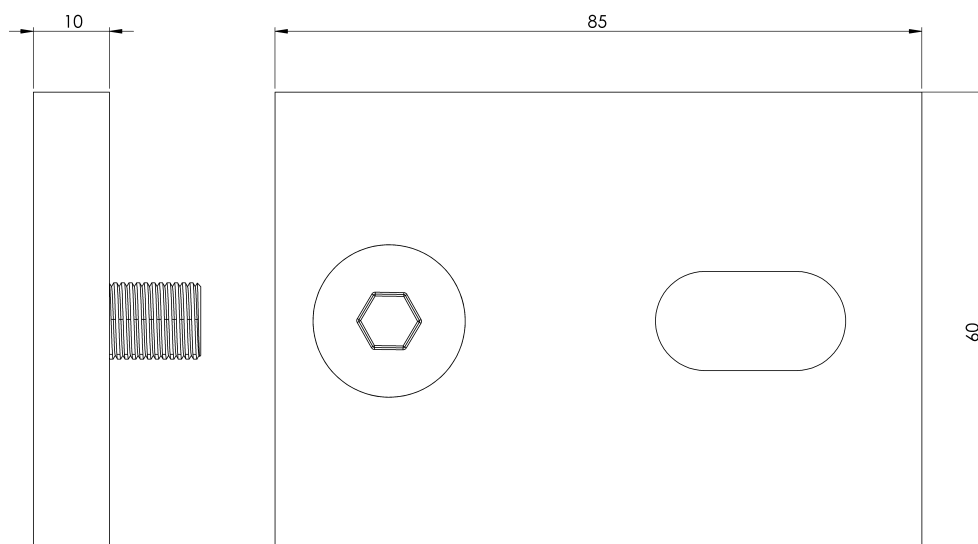
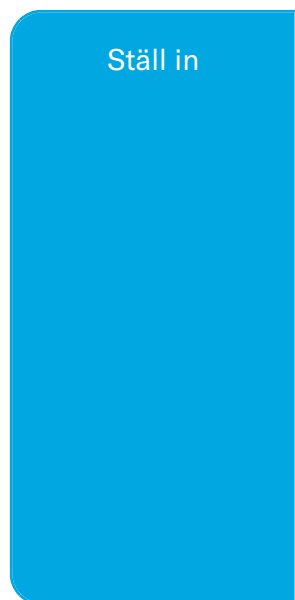
EN 795 Typ D

## EGENSKAPER

### Allmänna egenskaper

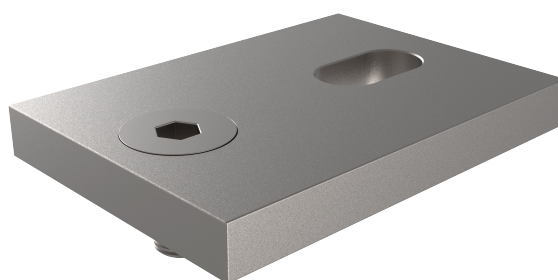
Reference (referens)	203007400007
Material	Rostfritt stål
Vikt	0,35 kg
Dimensioner	60x85x8 mm

# PLANER



# AR SOPSU

## Produkt



### Popis

- Súčasť záchranného lana ALURAIL.
- Jeho hlavnou úlohou je upevniť záchranné lano na rôzne konštrukcie.

### Štandard

EN 795 Typ D

## CHARAKTERISTIKA

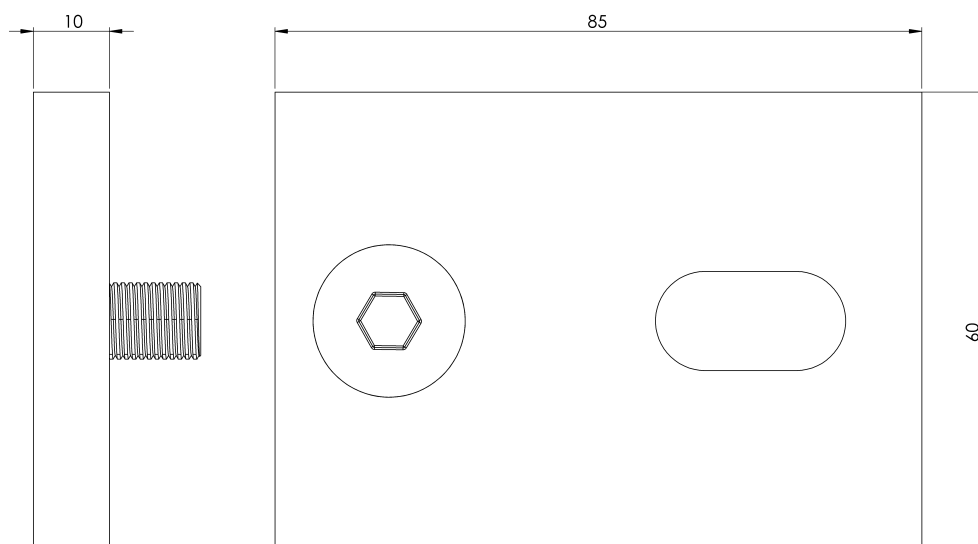
### Všeobecná charakteristika

Referencia	203007400007
Materiál	Nerezová oceľ
Hmotnosť	0,35 kg
Rozmery	60x85x8 mm



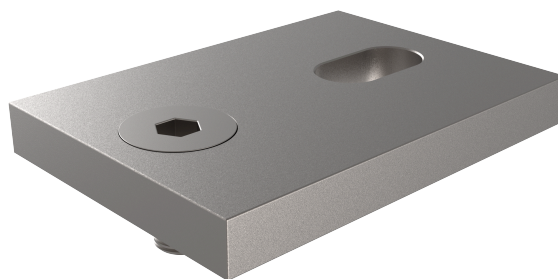
## PLÁNY

Nastavenie



# AR SOPSU

Produktas



## Aprašymas

- ALURAIL gyvybinės linijos sudedamoji dalis.
- Pagrindinė jo užduotis - tvirtinti gelbėjimo virvę prie įvairių konstrukcijų.

## Standartinis

EN 795 D tipas

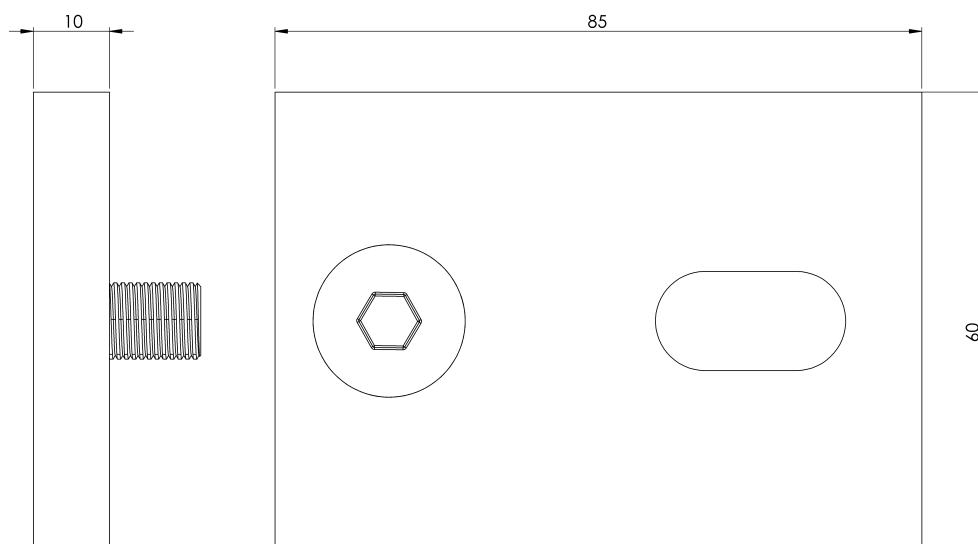
## CHARAKTERISTIKOS

### Bendrosios charakteristikos

Nurodymai	203007400007
Medžiaga	Nerūdijantis plienas
Svoris	0,35 kg
Matmenys	60x85x8 mm

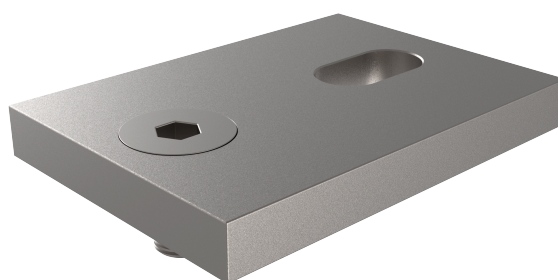
## PLANAI

Nustatyti



# AR SOPSU

## Produkt



### Beskrivelse

- Komponent i ALURAIL-livlinen.
- Hovedoppgaven er å feste livlinen til ulike strukturer.

### Standard

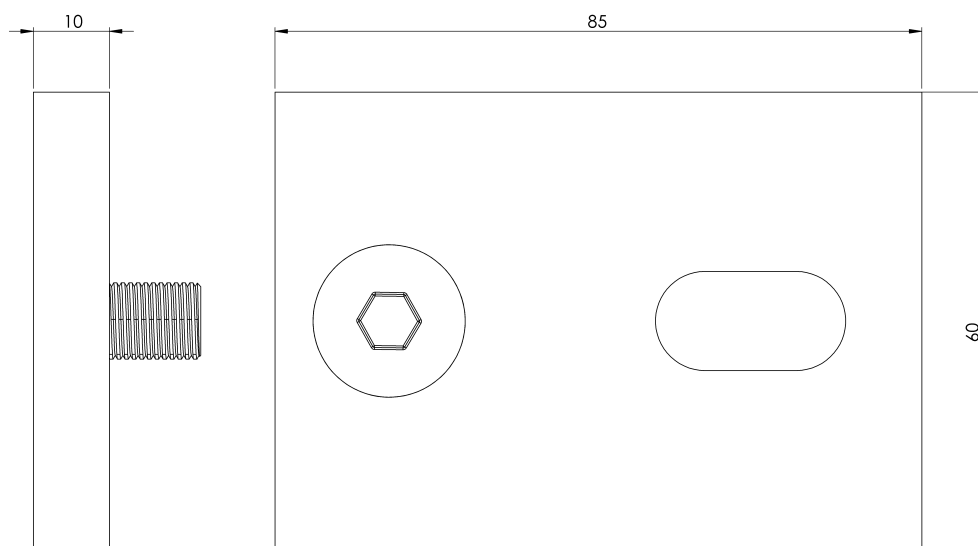
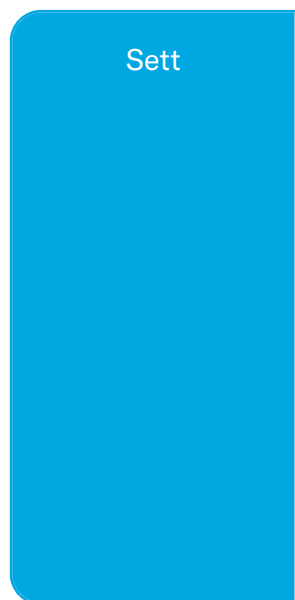
EN 795 Type D

## EGENSKAPER

### Generelle egenskaper

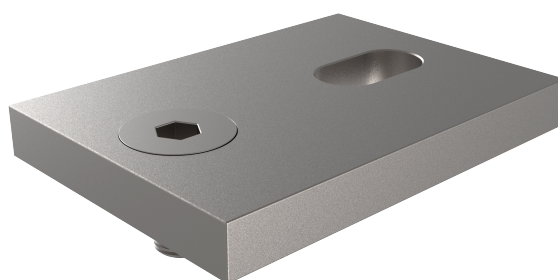
Referanse	203007400007
Materiale	Rustfritt stål
Vekt	0,35 kg
Dimensjoner	60x85x8 mm

# PLANER



# AR SOPSU

Produs



## Descriere

- Componentă a liniei de viață ALURAIL.
- Sarcina sa principală este de a fixa linia de viață la diverse structuri.

## Standard

EN 795 Tip D

# CARACTERISTICI

## Caracteristici generale

Referință	203007400007
Material	Oțel inoxidabil
Greutate	0,35 Kg
Dimensiuni	60x85x8 mm

# PLANURI

