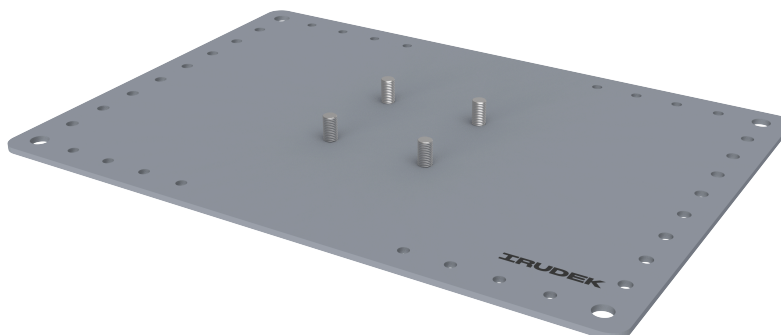


PLACA INFERIOR 333x225 – CH PLAC INF

CH PLAC INF

FICHA TÉCNICA

Producto



Descripción

- Componente de la línea de vida CHECKLINE II
- Su principal misión es fijar la línea de vida a la cubierta y ser sustentos para los postes.
- Se fijan mediante roscachapas.

Norma

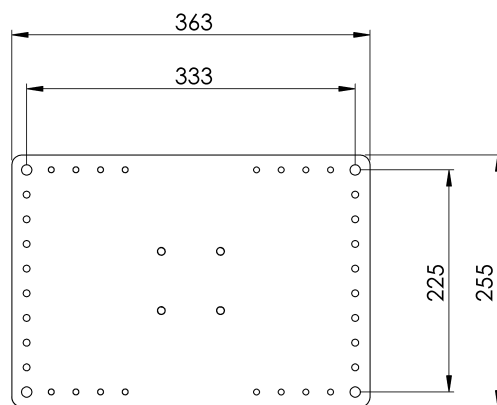
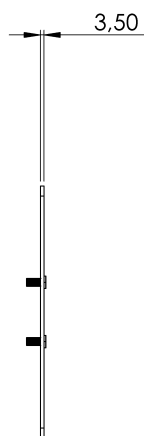
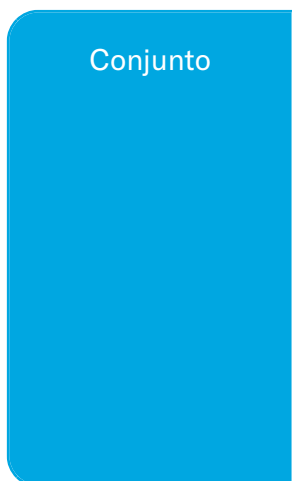
EN 795 Tipo A y C

CARACTERÍSTICAS

Características generales

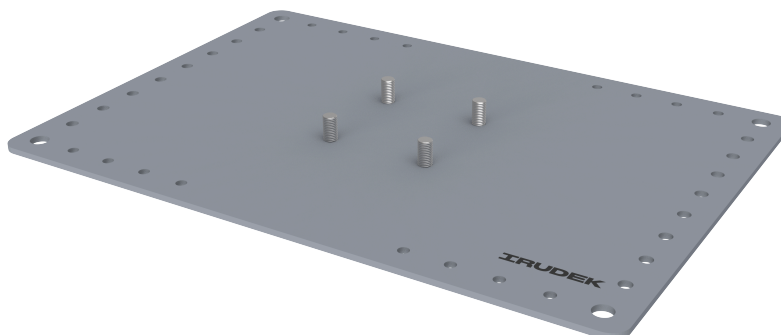
Referencia	200701500036
Material	Acero Galvanizado
Peso	2,10 kg
Dimensiones	20x255x363 mm

PLANOS



CH PLAC INF

Product



Description

- Lifeline component CHECKLINE II
- Their main task is to fix the lifeline to the deck and to support the poles.
- They shall be fixed by means of screw plugs.

Standard

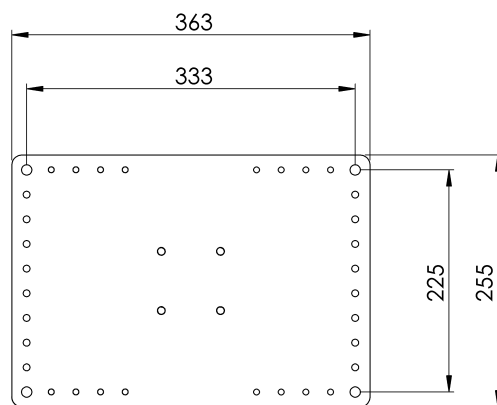
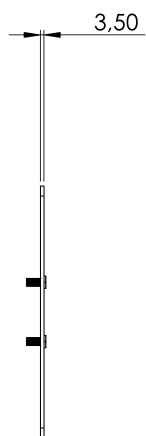
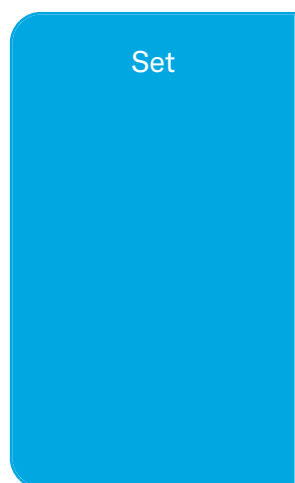
EN 795 Type A and C

CHARACTERISTICS

General characteristics

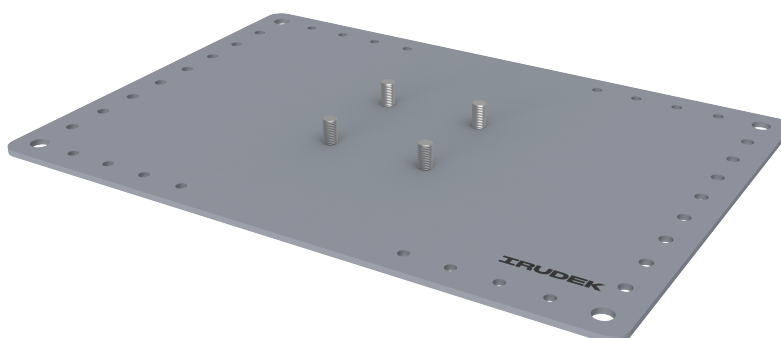
Reference	200701500036
Material	Galvanised steel
Weight	2,10 kg
Dimensions	20x255x363 mm

PLANS



CH PLAC INF

Prodotto



Descrizione

- Componente della linea di vita CHECKLINE II
- Il loro compito principale è quello di fissare la linea di vita alla coperta e di sostenere i pali.
- Il fissaggio deve avvenire mediante tappi a vite.

Standard

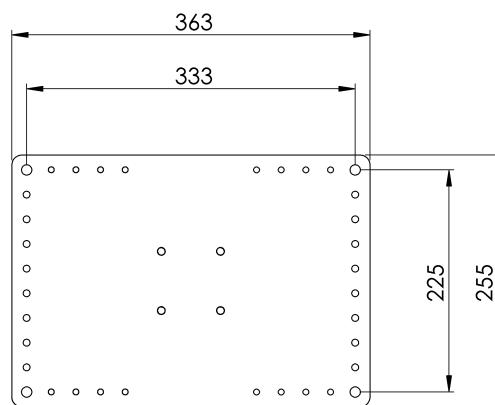
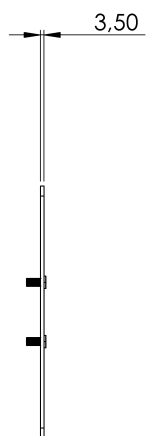
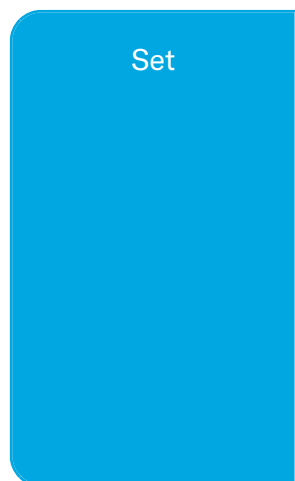
EN 795 Tipo A e C

CARATTERISTICHE

Caratteristiche generali

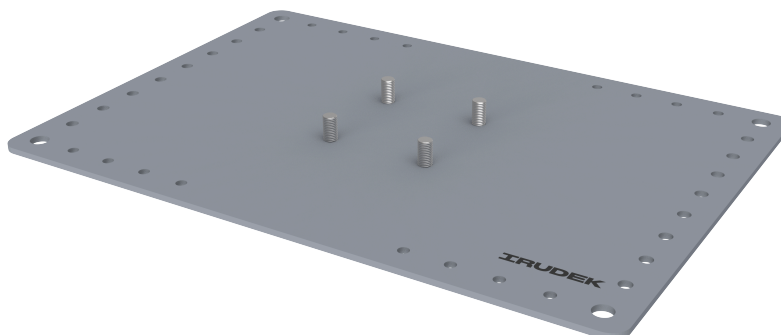
Riferimento	200701500036
Materiale	Acciaio zincato
Peso	2,10 kg
Dimensioni	20x255x363 mm

PIANI



CH PLAC INF

Produto



Descrição

- Componente da linha de vida CHECKLINE II
- A sua principal tarefa é fixar a linha de vida ao convés e apoiar os postes.
- A sua fixação deve ser efectuada por meio de parafusos de obturação.

Padrão

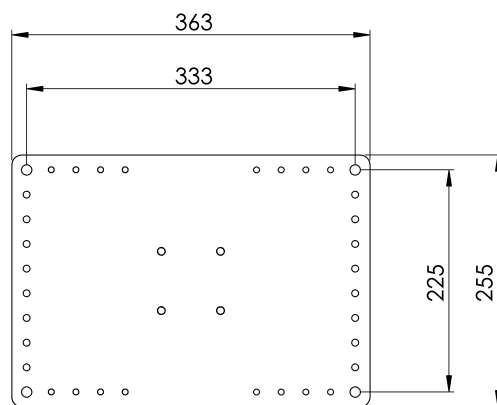
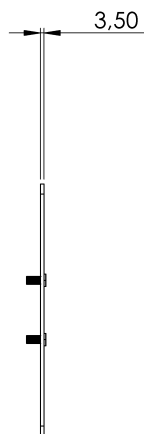
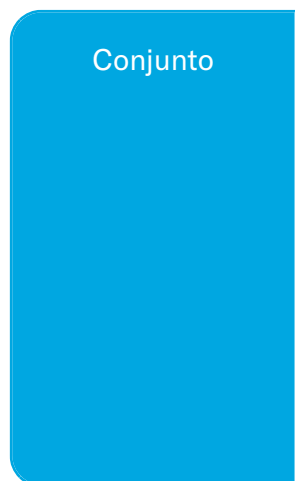
EN 795 Tipo A e C

CARACTERÍSTICAS

Caraterísticas gerais

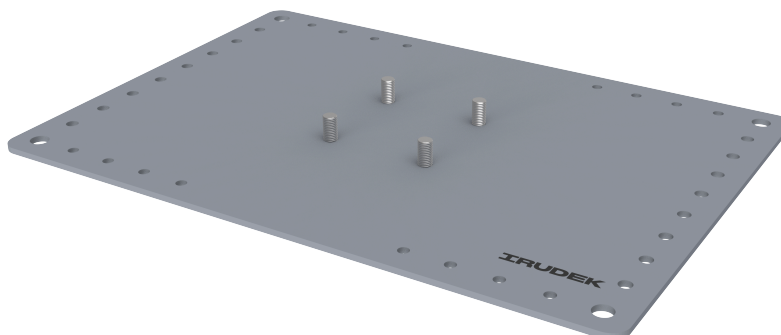
Referência	200701500036
Material	Aço galvanizado
Peso	2,10 kg
Dimensões	20x255x363 mm

PLANOS



CH PLAC INF

Produit



Description

- Composant de la ligne de vie CHECKLINE II
- Leur tâche principale est de fixer la ligne de vie au pont et de soutenir les poteaux.
- Ils sont fixés au moyen de bouchons à vis.

Standard

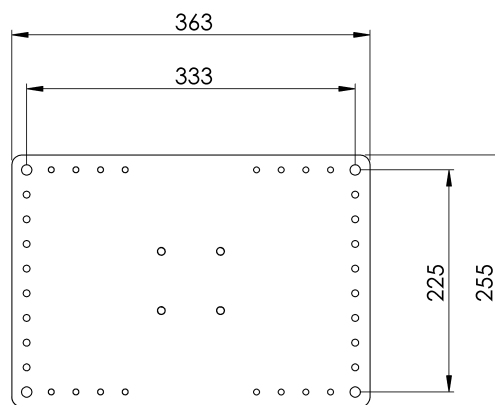
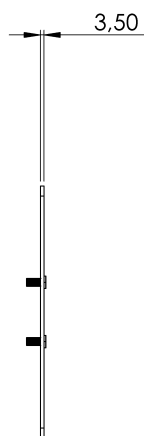
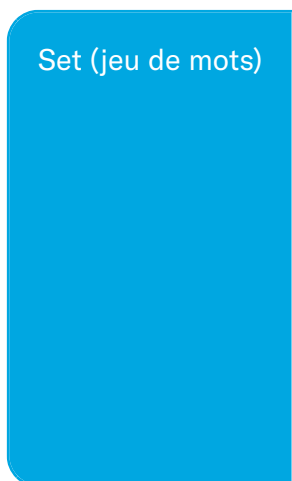
EN 795 Type A et C

CARACTÉRISTIQUES

Caractéristiques générales

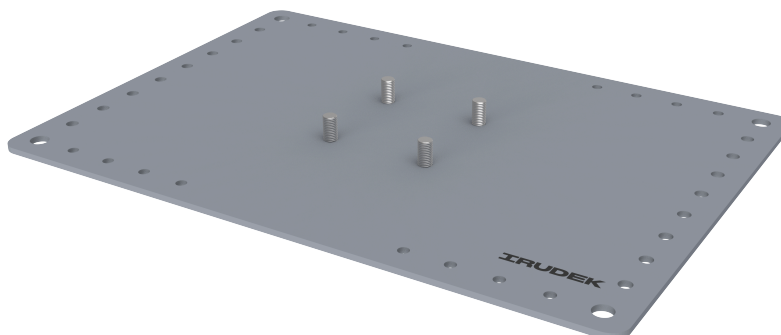
Référence	200701500036
Matériel	Acier galvanisé
Poids	2,10 kg
Dimensions	20x255x363 mm

PLANS



CH PLAC INF

Produkt



Beschreibung

- Lifeline-Bauteil CHECKLINE II
- Ihre Hauptaufgabe besteht darin, die Rettungsleine an Deck zu befestigen und die Masten zu stützen.
- Sie sind mit Verschlusschrauben zu befestigen.

Standard

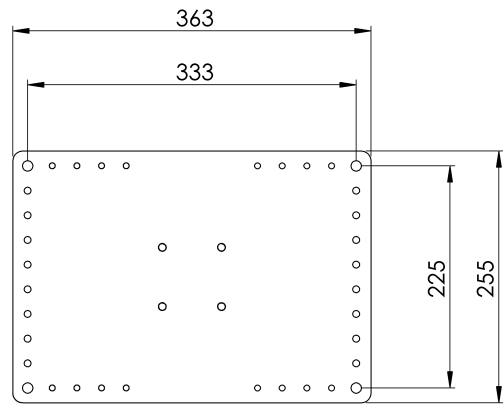
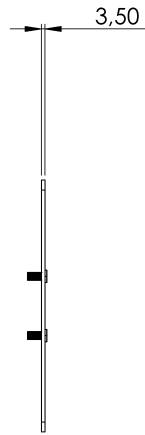
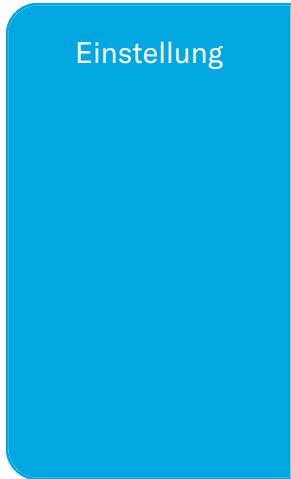
EN 795 Typ A und C

EIGENSCHAFTEN

Allgemeine Merkmale

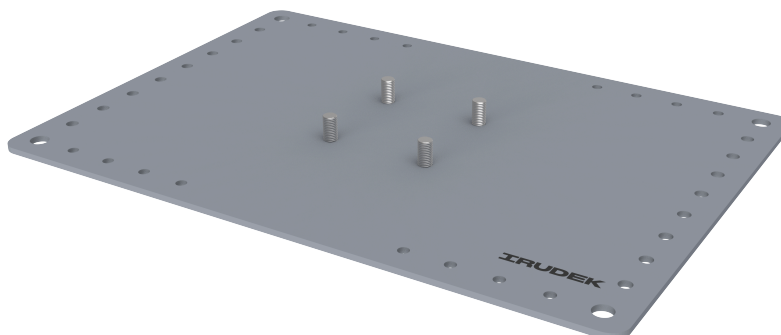
Referenz	200701500036
Material	Verzinkter Stahl
Gewicht	2,10 kg
Abmessungen	20x255x363 mm

PLANEN



CH PLAC INF

Produkt



Opis

- Element linii życia CHECKLINE II
- Ich głównym zadaniem jest mocowanie liny ratunkowej do pokładu i podtrzymywanie masztów.
- Powinny one być mocowane za pomocą zaślepek śrubowych.

Standard

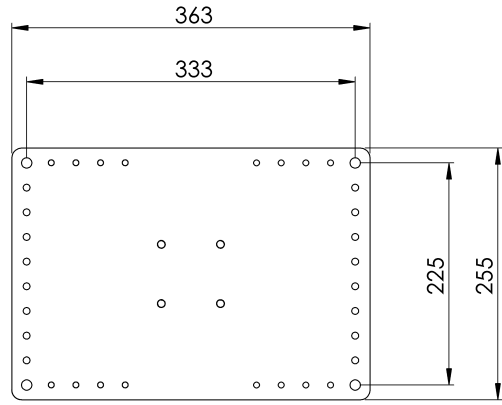
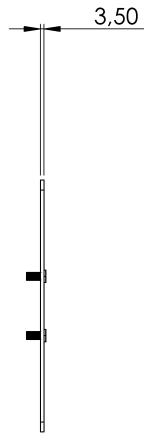
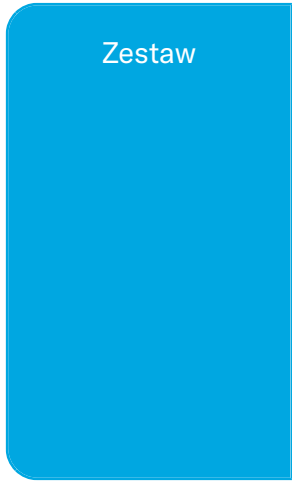
EN 795 Typ A i C

CHARAKTERYSTYKA

Ogólna charakterystyka

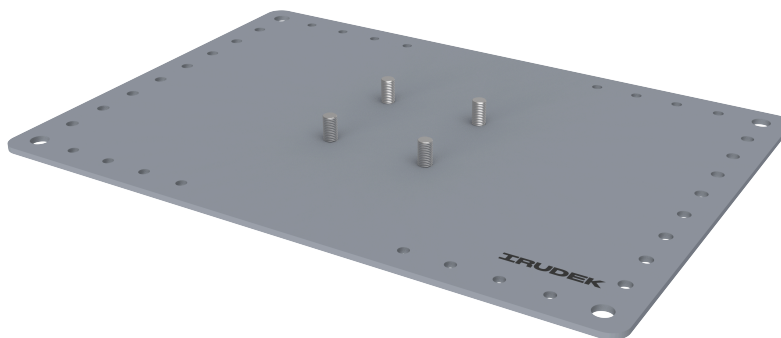
Odniesienie	200701500036
Materiał	Stal ocynkowana
Waga	2,10 kg
Wymiary	20x255x363 mm

PLANY



CH PLAC INF

Termék



Leírás

- Mentővonal komponens CHECKLINE II
- Fő feladatuk a mentőkötél rögzítése a fedélzethez és a rudak alátámasztása.
- Ezeket csavaros dugókkal kell rögzíteni.

Standard

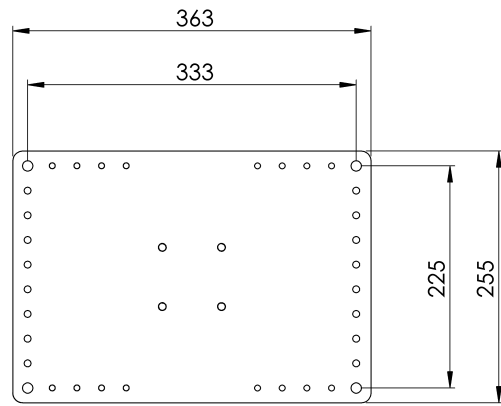
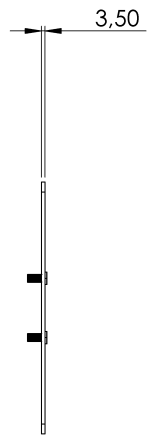
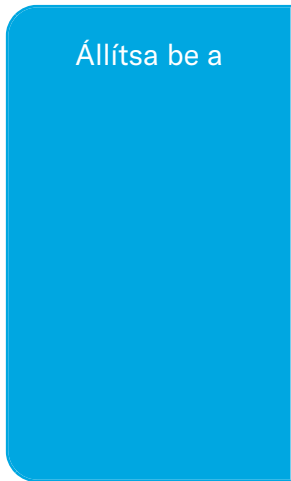
EN 795 A és C típus

JELLEMZŐK

Általános jellemzők

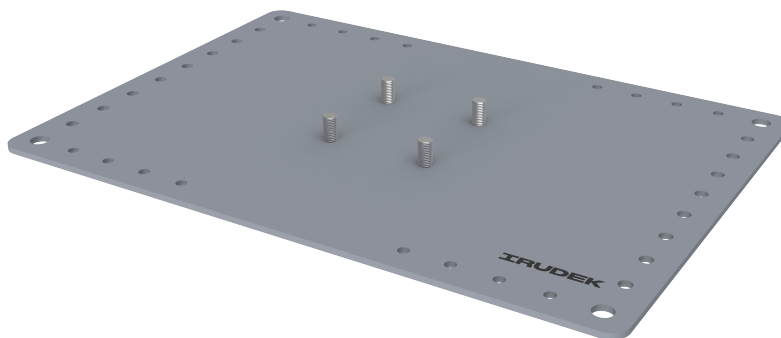
Hivatkozás	200701500036
Anyag	Horganyzott acél
Súly	2,10 kg
Méret	20x255x363 mm

TERVEK



CH PLAC INF

Produto



Descrição

- Componente da linha de vida CHECKLINE II
- Sua principal tarefa é fixar a linha de vida no convés e apoiar os postes.
- Eles devem ser fixados por meio de bujões de rosca.

Padrão

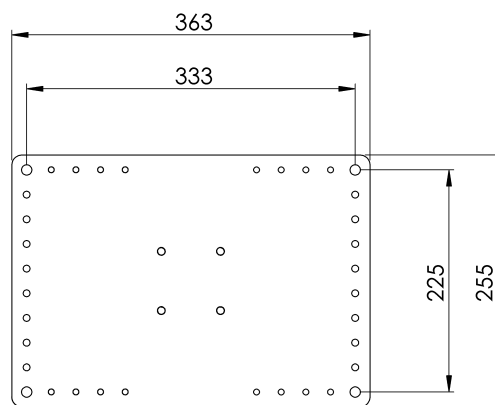
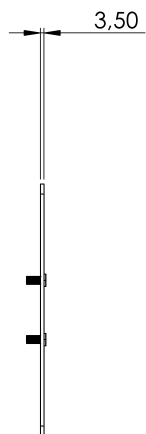
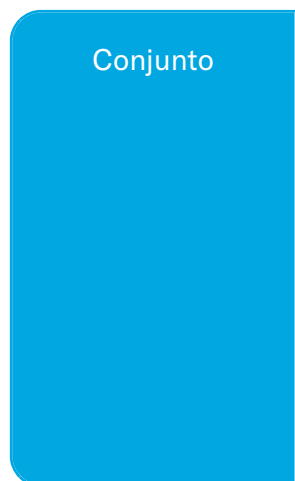
EN 795 Tipo A e C

CARACTERÍSTICAS

Características gerais

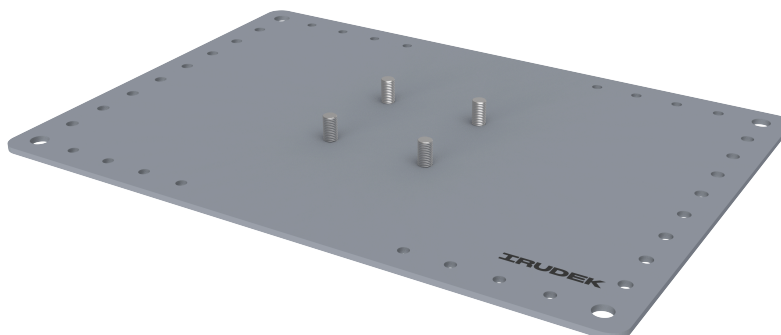
Referência	200701500036
Material	Aço galvanizado
Peso	2,10 kg
Dimensões	20x255x363 mm

PLANOS



CH PLAC INF

Продукт



Описание

- Компонент на спасителната линия CHECKLINE II
- Основната им задача е да закрепят спасителното въже към палубата и да поддържат стълбовете.
- Те се закрепват с помощта на винтови тапи.

Стандартен

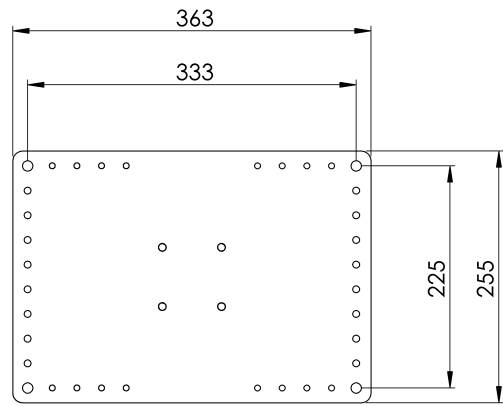
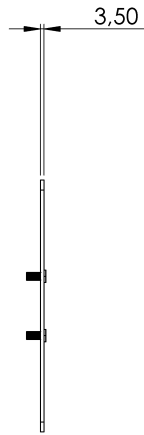
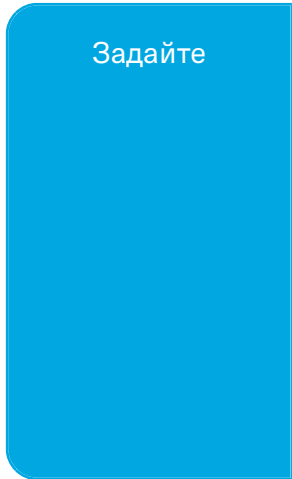
EN 795 Тип А и С

ХАРАКТЕРИСТИКИ

Общи характеристики

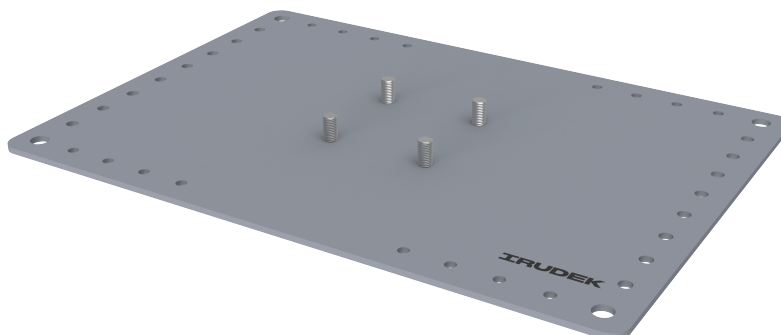
Справка	200701500036
Материал	Поцинкована стомана
Тегло	2,10 кг
Размери	20x255x363 мм

ПЛАНОВЕ



CH PLAC INF

Produkt



Beskrivning

- Lifeline-komponent CHECKLINE II
- Deras huvuduppgift är att fästa livlinan i däcket och att stödja stolparna.
- De skall fästas med hjälp av skruvpluggar.

Standard

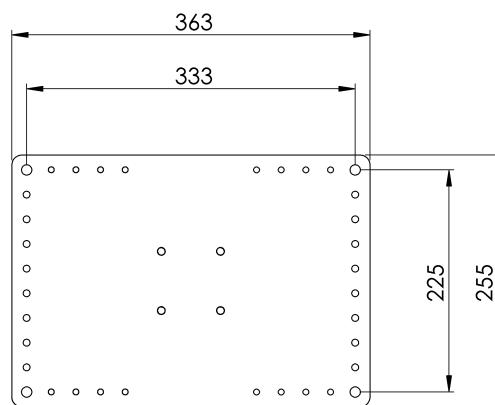
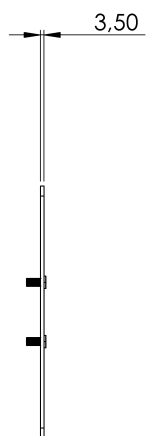
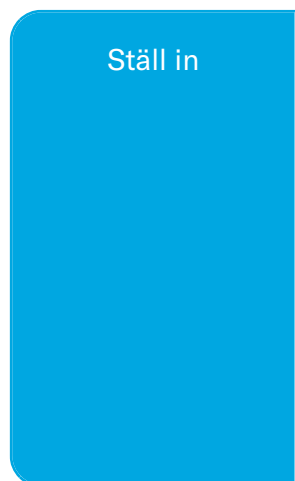
EN 795 Typ A och C

EGENSKAPER

Allmänna egenskaper

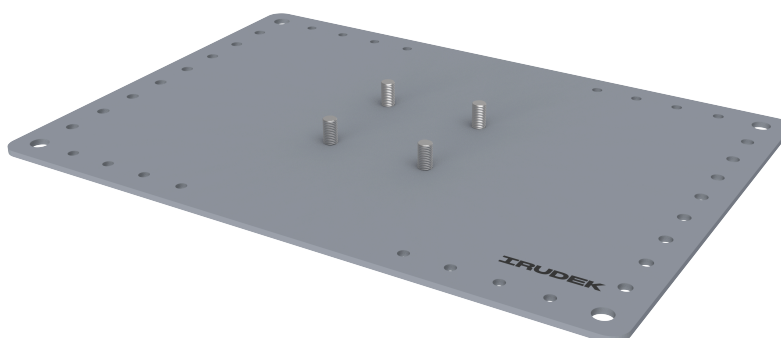
Reference (referens)	200701500036
Material	Galvaniserat stål
Vikt	2,10 kg
Dimensioner	20x255x363 mm

PLANER



CH PLAC INF

Produkt



Popis

- Komponent záchranné línie CHECKLINE II
- Ich hlavnou úlohou je pripevniť záchranné lano k palube a podprieť tyče.
- Upevňujú sa pomocou skrutkových zátok.

Štandard

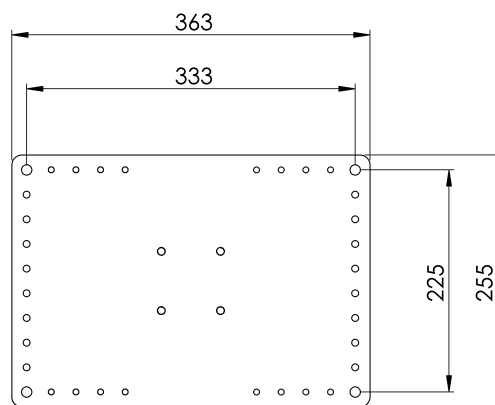
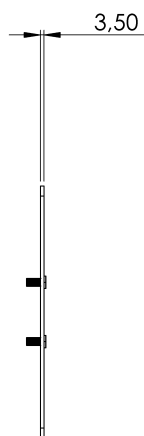
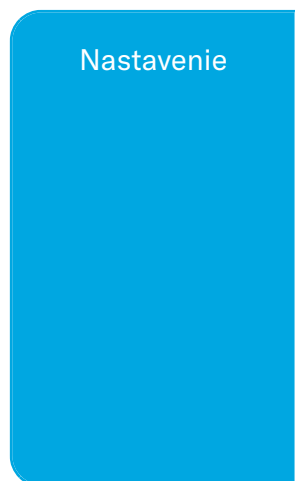
EN 795 Typ A a C

CHARAKTERISTIKA

Všeobecná charakteristika

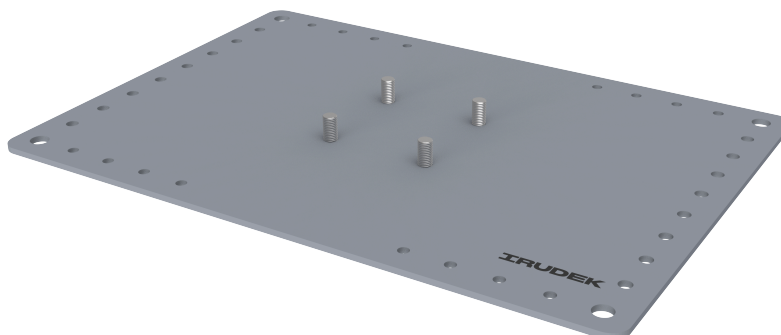
Referencia	200701500036
Materiál	Pozinkovaná oceľ
Hmotnosť	2,10 kg
Rozmery	20x255x363 mm

PLÁNY



CH PLAC INF

Produktas



Aprašymas

- Gelbėjimo linijos komponentas CHECKLINE II
- Pagrindinė jų užduotis - pritvirtinti gelbėjimo virvę prie denio ir paremti stulpus.
- Jie tvirtinami varžtiniais kamščiais.

Standartinis

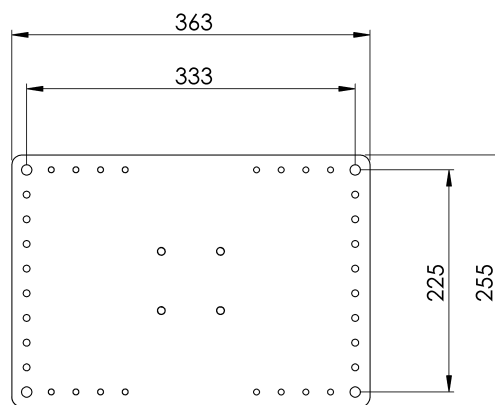
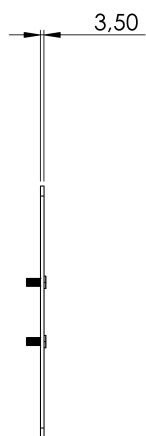
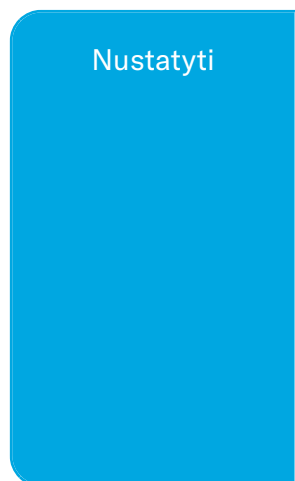
EN 795 A ir C tipai

CHARAKTERISTIKOS

Bendrosios charakteristikos

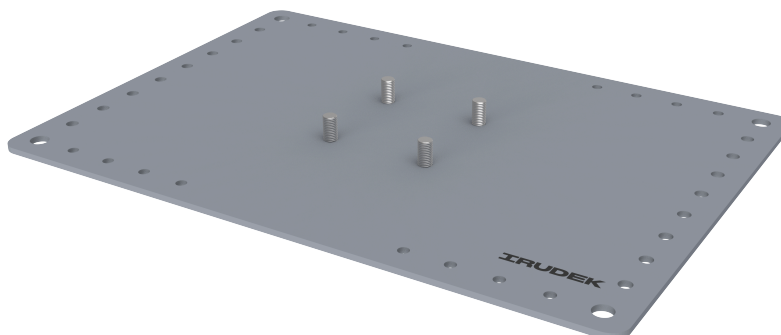
Nurodymai	200701500036
Medžiaga	Cinkuotas plienas
Svoris	2,10 kg
Matmenys	20x255x363 mm

PLANAI



CH PLAC INF

Produkt



Beskrivelse

- Lifeline-komponent CHECKLINE II
- Hovedoppgaven deres er å feste livlinen til dekket og å støtte stolpene.
- De skal festes ved hjelp av skrueplugger.

Standard

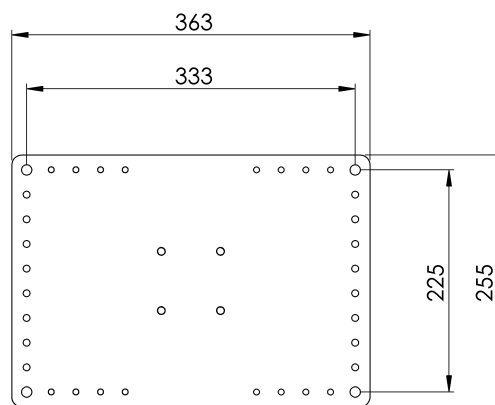
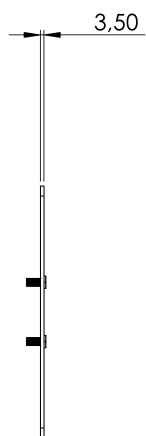
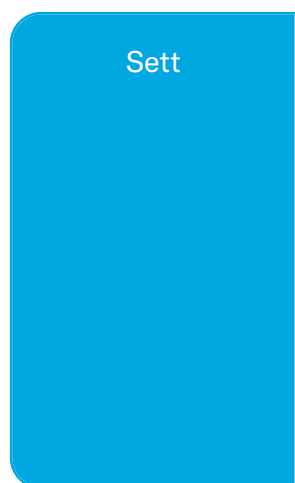
EN 795 Type A og C

EGENSKAPER

Generelle egenskaper

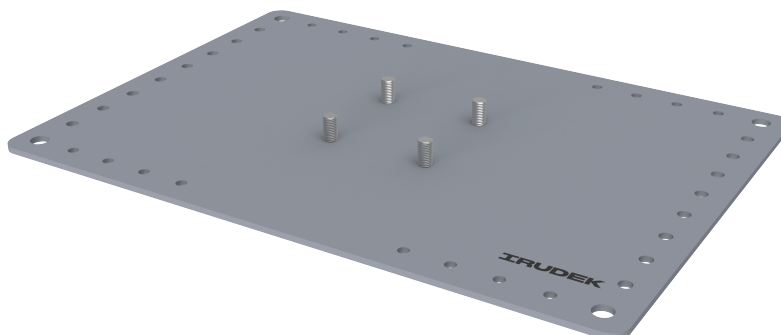
Referanse	200701500036
Materiale	Galvanisert stål
Vekt	2,10 kg
Dimensjoner	20x255x363 mm

PLANER



CH PLAC INF

Produs



Descriere

- Componentă Lifeline CHECKLINE II
- Sarcina lor principală este de a fixa linia de salvare pe punte și de a susține stâlpii.
- Acestea se fixează cu ajutorul unor dopuri cu șurub.

Standard

EN 795 Tip A și C

CARACTERISTICI

Caracteristici generale

Referință	200701500036
Material	Oțel galvanizat
Greutate	2,10 kg
Dimensiuni	20x255x363 mm

PLANURI

