

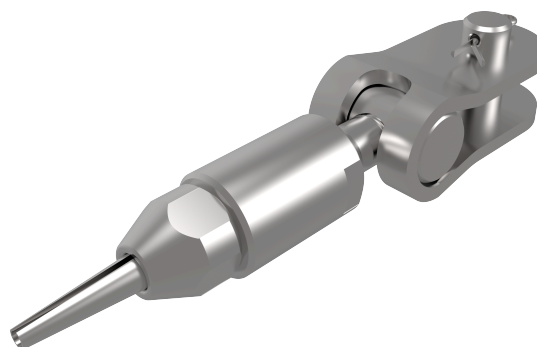


PIEZA ENGASTADO MANUAL – CH PEM

CH PEM

FICHA TÉCNICA

Producto



Descripción

- Componente de la línea de vida CHECKLINE II
- Su principal misión es ajustar las líneas de vida a la medida adecuada en obra.
- No necesita maquinaria especial para engastar el cable.

Norma

EN 795 Tipo C

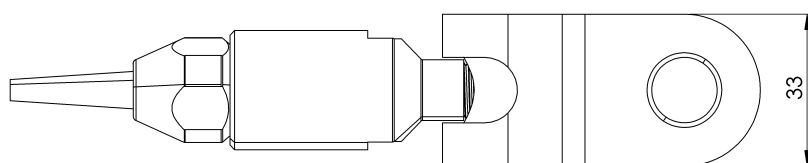
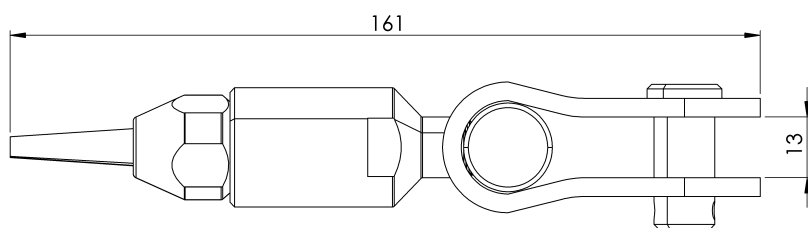
CARACTERÍSTICAS

Características generales

Referencia	200701500019
Material	Acero Inox 304
Peso	0,40 kg
Dimensiones	161x31,5x32,5 mm

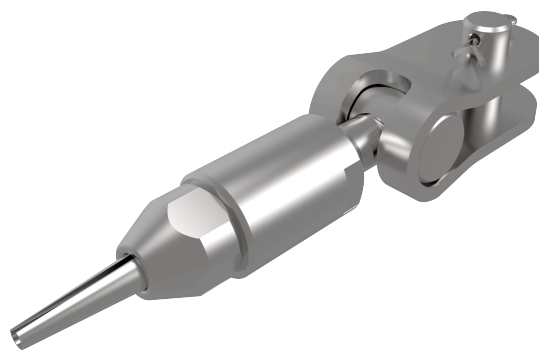
PLANOS

Conjunto



CH PEM

Product



Description

- Lifeline component CHECKLINE II
- Its main task is to adjust the lifelines to the right size on site.
- No special machinery is required to crimp the cable;

Standard

EN 795 Type C

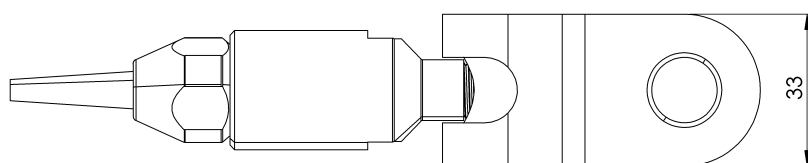
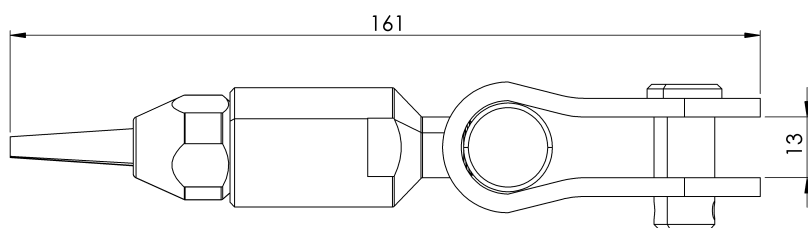
CHARACTERISTICS

General characteristics

Reference	200701500019
Material	304 stainless steel
Weight	0,40 kg
Dimensions	161x31,5x31,5x32,5 mm

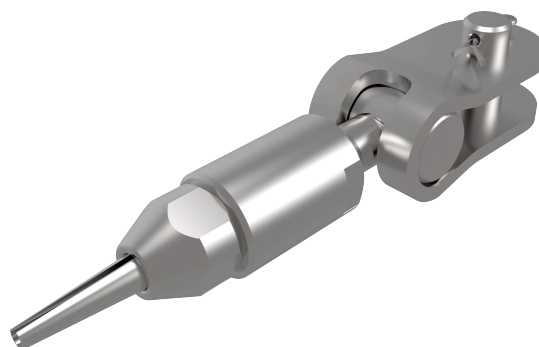
PLANS

Set



CH PEM

Prodotto



Descrizione

- Componente della linea di vita CHECKLINE II
- Il suo compito principale è quello di regolare le linee di vita alla giusta dimensione in loco.
- Per crimpare il cavo non sono necessari macchinari speciali;

Standard

EN 795 Tipo C

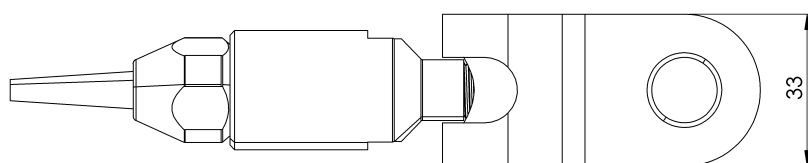
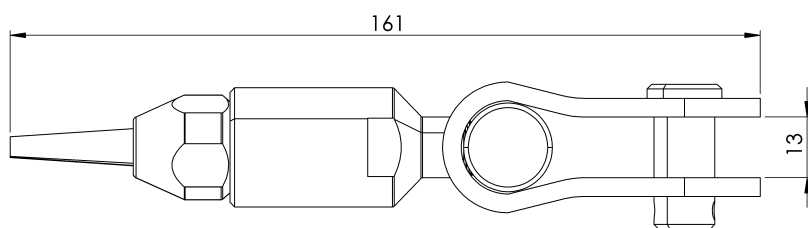
CARATTERISTICHE

Caratteristiche generali

Riferimento	200701500019
Materiale	Acciaio inox 304
Peso	0,40 kg
Dimensioni	161x31,5x31,5x32,5 mm

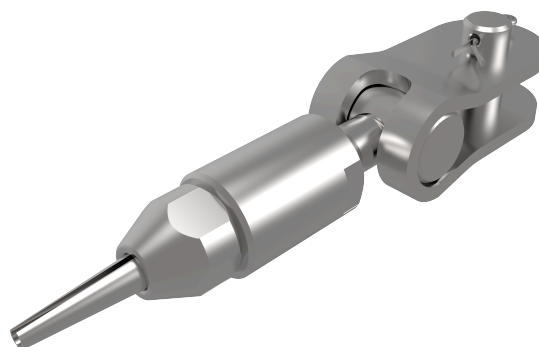
PIANI

Set



CH PEM

Produto



Descrição

- Componente da linha de vida CHECKLINE II
- A sua principal função é ajustar as linhas de vida à dimensão correta no local.
- Não é necessária nenhuma máquina especial para cravar o cabo;

Padrão

EN 795 Tipo C

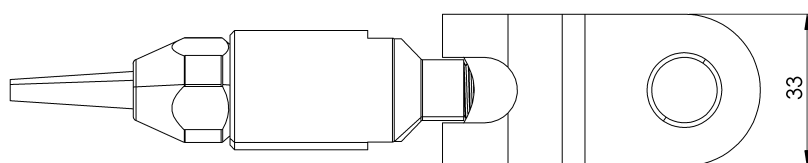
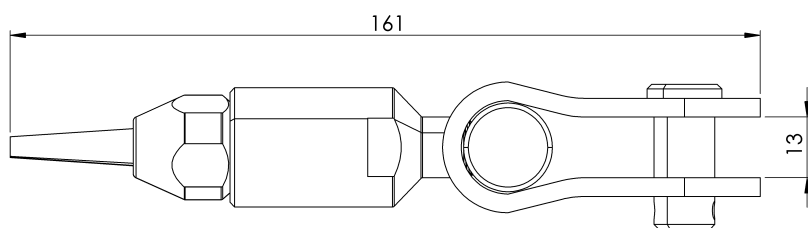
CARACTERÍSTICAS

Caraterísticas gerais

Referência	200701500019
Material	Aço inoxidável 304
Peso	0,40 kg
Dimensões	161x31,5x31,5x32,5 mm

PLANOS

Conjunto



CH PEM

Produit



Description

- Composant de la ligne de vie CHECKLINE II
- Sa tâche principale est d'ajuster les lignes de vie à la bonne taille sur le site.
- Aucune machine spéciale n'est nécessaire pour sertir le câble ;

Standard

EN 795 Type C

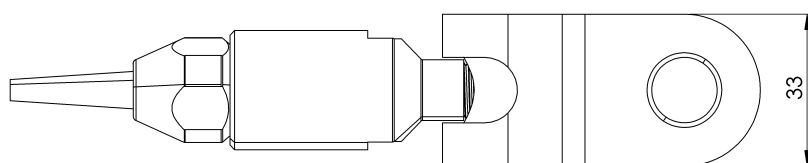
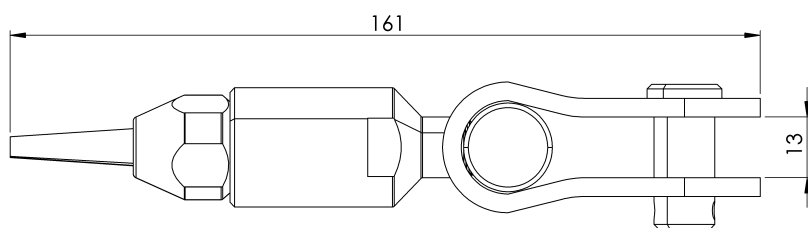
CARACTÉRISTIQUES

Caractéristiques générales

Référence	200701500019
Matériel	Acier inoxydable 304
Poids	0,40 kg
Dimensions	161x31,5x31,5x32,5 mm

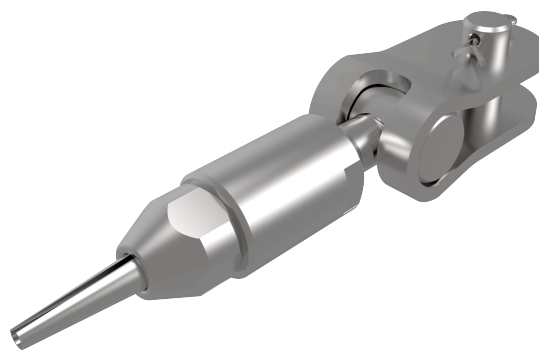
PLANS

Set (jeu de mots)



CH PEM

Produkt



Beschreibung

- Lifeline-Bauteil CHECKLINE II
- Seine Hauptaufgabe besteht darin, die Rettungsleinen vor Ort auf die richtige Größe einzustellen.
- Zum Crimpen des Kabels sind keine speziellen Maschinen erforderlich;

Standard

EN 795 Typ C

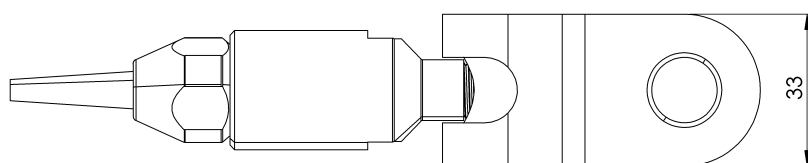
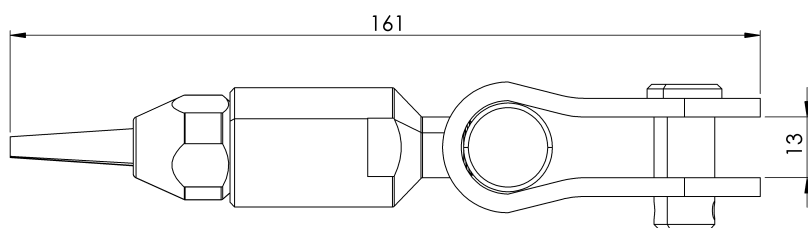
EIGENSCHAFTEN

Allgemeine Merkmale

Referenz	200701500019
Material	Rostfreier Stahl 304
Gewicht	0,40 kg
Abmessungen	161x31,5x31,5x32,5 mm

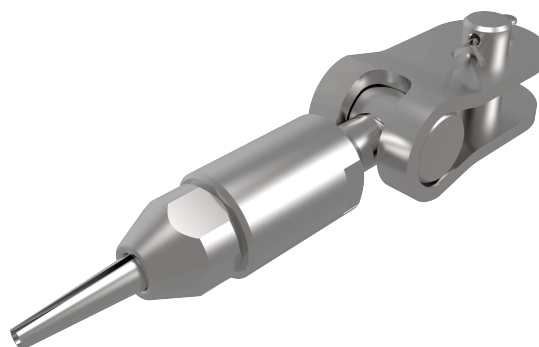
PLANEN

Satz



CH PEM

Produkt



Opis

- Element linii życia CHECKLINE II
- Jego głównym zadaniem jest dostosowanie linii życia do odpowiedniego rozmiaru na miejscu.
- Do zaciśnięcia kabla nie są wymagane żadne specjalne urządzenia;

Standard

EN 795 Typ C

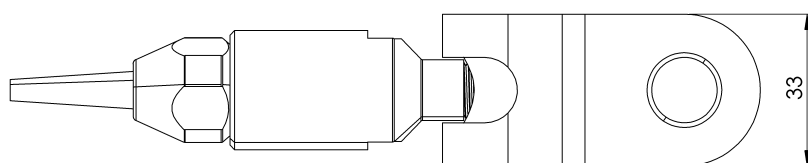
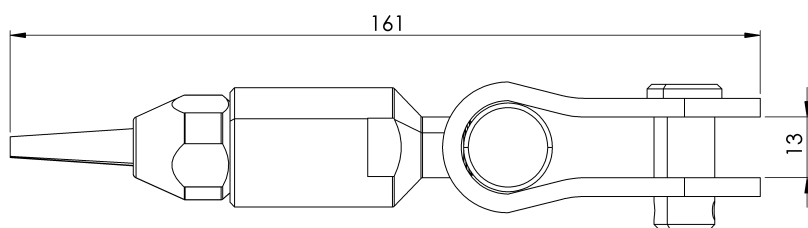
CHARAKTERYSTYKA

Ogólna charakterystyka

Odniesienie	200701500019
Materiał	Stal nierdzewna 304
Waga	0,40 kg
Wymiary	161x31,5x31,5x32,5 mm

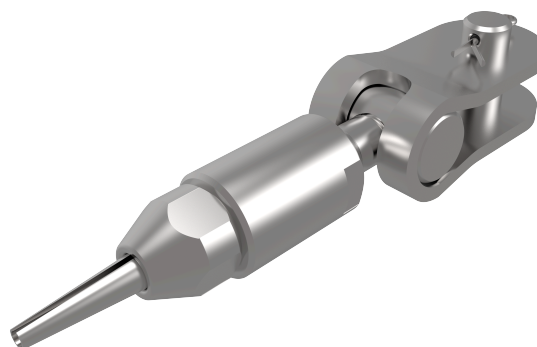
PLANY

Zestaw



CH PEM

Termék



Leírás

- Mentővonal komponens CHECKLINE II
- Fő feladata, hogy a mentőköteleket a helyszínen a megfelelő méretre állítsa be.
- A kábel krimpeléséhez nincs szükség speciális gépekre;

Standard

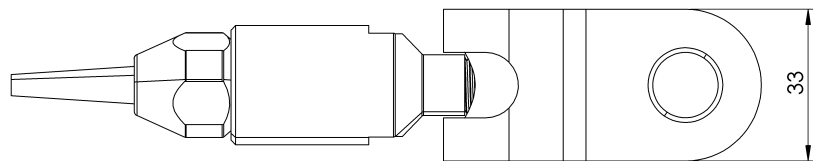
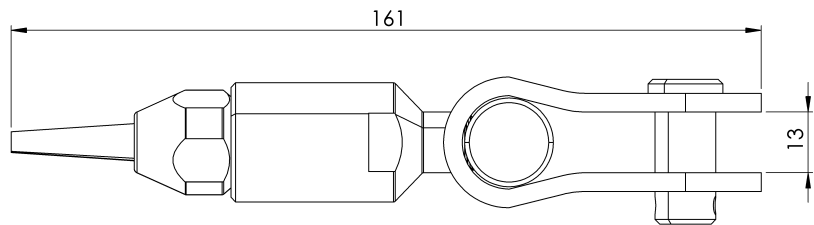
EN 795 C típus

JELLEMZŐK

Általános jellemzők	Hivatkozás	200701500019
	Anyag	304 rozsdamentes acél
	Súly	0,40 kg
	Méret	161x31,5x31,5x31,5x32,5 mm

TERVEK

Állítsa be a



CH PEM

Produto



Descrição

- Componente da linha de vida CHECKLINE II
- Sua principal tarefa é ajustar as linhas de vida ao tamanho correto no local.
- Não é necessário nenhum equipamento especial para crimpar o cabo;

Padrão

EN 795 Tipo C

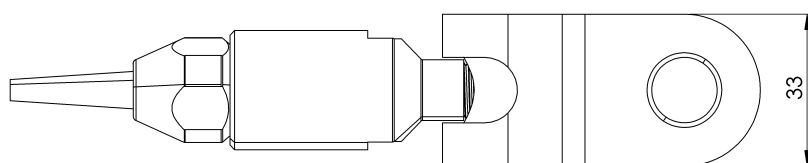
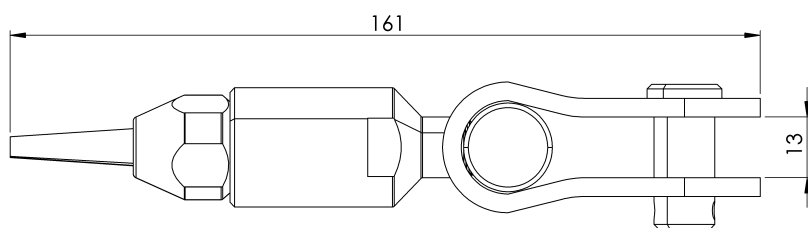
CARACTERÍSTICAS

Características gerais

Referência	200701500019
Material	Aço inoxidável 304
Peso	0,40 kg
Dimensões	161x31,5x31,5x32,5 mm

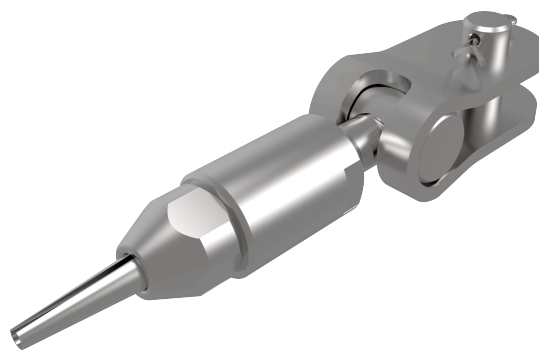
PLANOS

Conjunto



CH PEM

Продукт



Описание

- Компонент на спасителната линия CHECKLINE II
- Основната му задача е да регулира спасителните въжета до правилния размер на място.
- Не е необходима специална техника за кримпване на кабела;

Стандартен

EN 795 Тип C

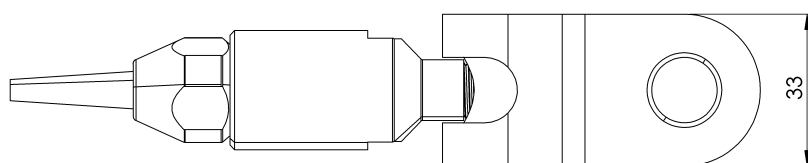
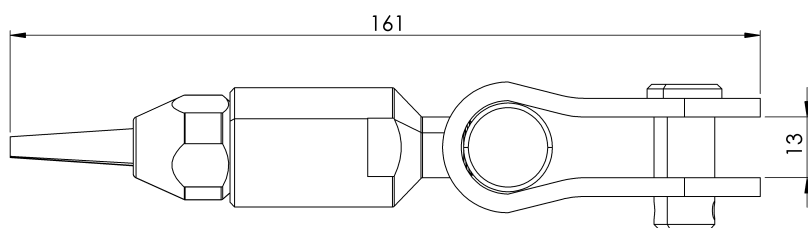
ХАРАКТЕРИСТИКИ

Общи характеристики

Справка	200701500019
Материал	304 неръждаема стомана
Тегло	0,40 кг
Размери	161x31,5x31,5x32,5 mm

ПЛАНОВЕ

Задайте



CH PEM

Produkt



Beskrivning

- Lifeline-komponent CHECKLINE II
- Dess huvuduppgift är att justera livlinorna till rätt storlek på plats.
- Det krävs inga specialmaskiner för att pressa kabeln;

Standard

EN 795 Typ C

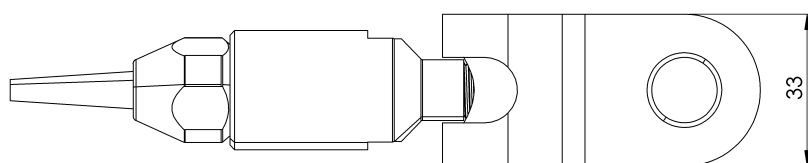
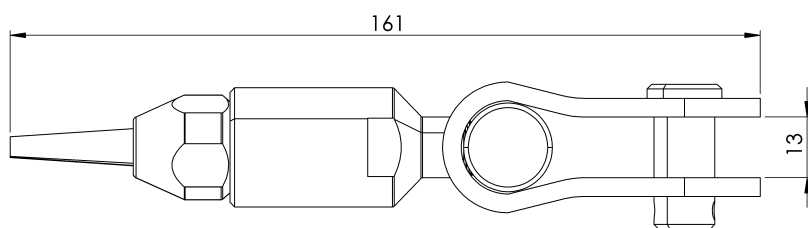
EGENSKAPER

Allmänna egenskaper

Reference (referens)	200701500019
Material	304 rostfritt stål
Vikt	0,40 kg
Dimensioner	161x31,5x31,5x32,5 mm

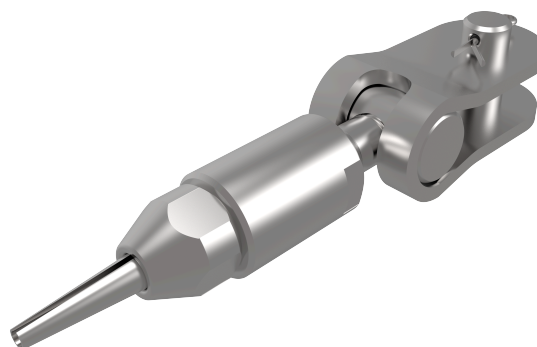
PLANER

Ställ in



CH PEM

Produkt



Popis

- Komponent záchrannéj línie CHECKLINE II
- Jeho hlavnou úlohou je nastaviť záchranné laná na mieste na správnu veľkosť.
- Na lisovanie kábla nie je potrebné žiadne špeciálne zariadenie;

Štandard

EN 795 Typ C

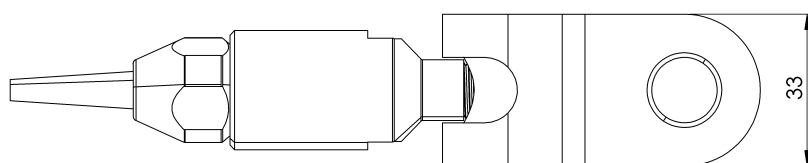
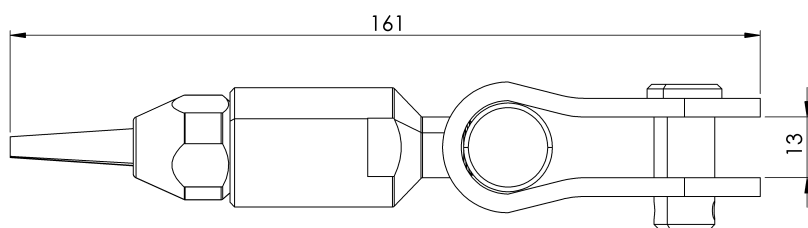
CHARAKTERISTIKA

Všeobecná charakteristika

Referencia	200701500019
Materiál	304 nehrdzavejúca oceľ
Hmotnosť	0,40 kg
Rozmery	161x31,5x31,5x32,5 mm

PLÁNY

Nastavenie



CH PEM

Produktas



Aprašymas

- Gelbėjimo linijos komponentas CHECKLINE II
- Pagrindinė jo užduotis - pritaikyti gelbėjimo virves prie tinkamo dydžio vietoje.
- Kabeliui užspausti nereikia specialios technikos;

Standartinis

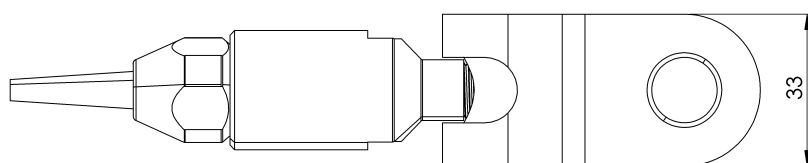
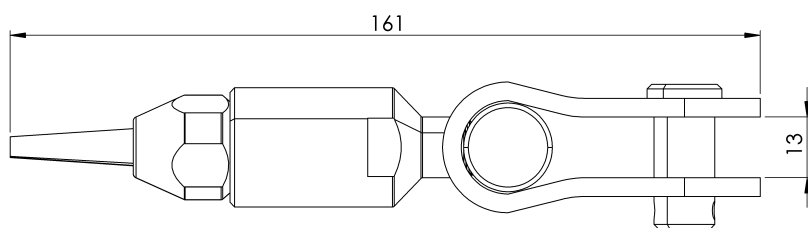
EN 795 C tipas

CHARAKTERISTIKOS

Bendrosios savybės	Nurodymai	200701500019
	Medžiaga	304 nerūdijantis plienas
	Svoris	0,40 kg
	Matmenys	161x31,5x31,5x31,5x32,5 mm

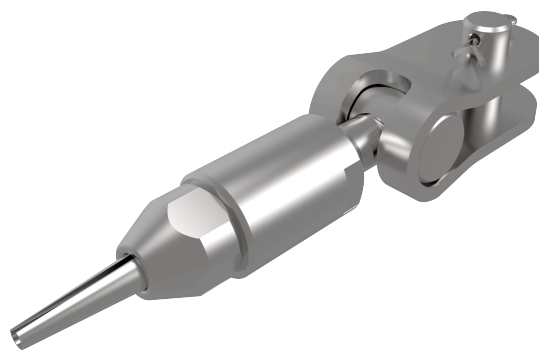
PLANAI

Nustatyti



CH PEM

Produkt



Beskrivelse

- Lifeline-komponent CHECKLINE II
- Hovedoppgaven er å justere livlinene til riktig størrelse på stedet.
- Det kreves ingen spesielle maskiner for å kryspe kabelen;

Standard

EN 795 Type C

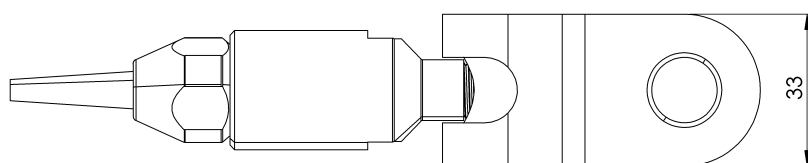
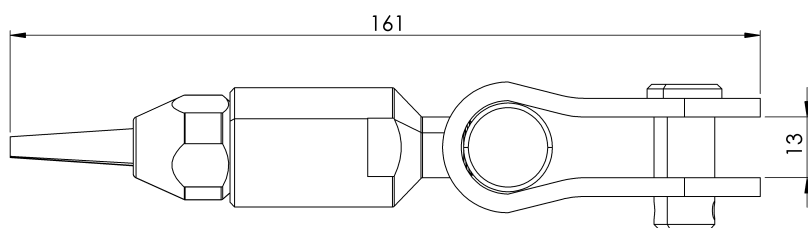
EGENSKAPER

Generelle egenskaper

Referanse	200701500019
Materiale	304 rustfritt stål
Vekt	0,40 kg
Dimensjoner	161x31,5x31,5x32,5 mm

PLANER

Sett



CH PEM

Produs



Descriere

- Componentă Lifeline CHECKLINE II
- Sarcina sa principală este de a ajusta liniile de salvare la dimensiunea corectă la fața locului.
- Nu sunt necesare utilaje speciale pentru sertizarea cablului;

Standard

EN 795 Tip C

CARACTERISTICI

Caracteristici generale

Referință	200701500019
Material	304 oțel inoxidabil
Greutate	0,40 kg
Dimensiuni	161x31,5x31,5x32,5 mm

PLANURI

Set

