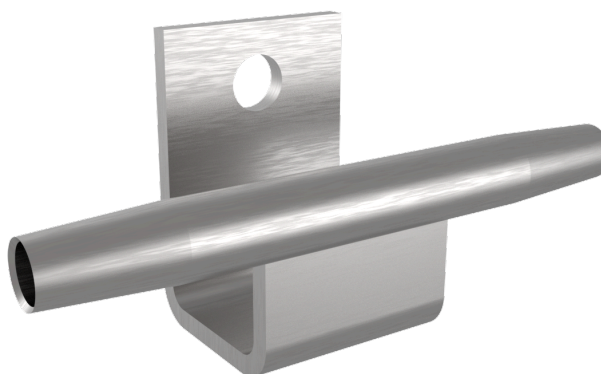


PIEZA INTERMEDIA – LF INTER

LF INTER

FICHA TÉCNICA

Producto



Descripción

- Componente de la línea de vida LIFELINE 2000
- Su principal misión es hacer de apoyos intermedios de cable.
- Se pueden colocar a una distancia máxima de 20m entre sí.
- Tiene una resistencia de 21kN.

Norma

EN 795 Tipo C

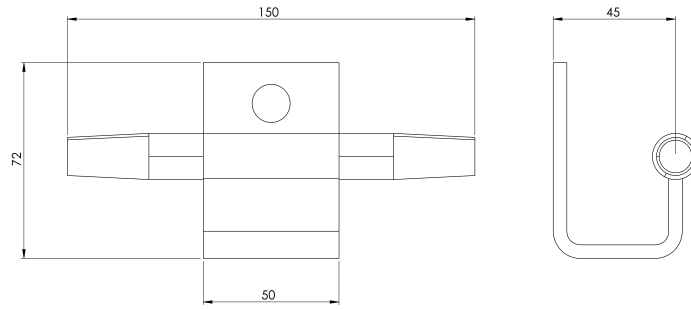
CARACTERÍSTICAS

Características generales

Referencia	201804400003
Material	Acero Inox 316
Peso	0,35 kg
Dimensiones	150x72x56 mm

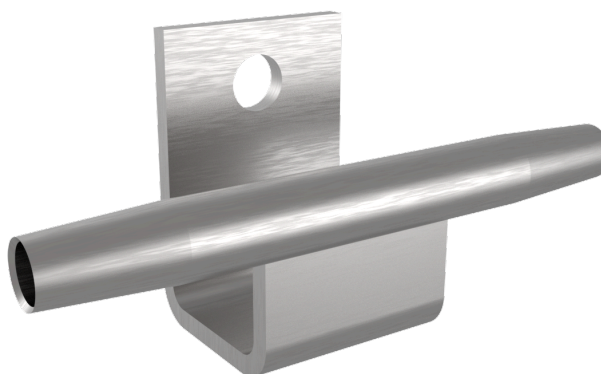
PLANOS

Conjunto



LF INTER

Product



Description

- LIFELINE 2000 Lifeline Component
- Their main task is to act as intermediate cable supports.
- They can be placed at a maximum distance of 20m from each other.
- It has a resistance of 21kN.

Standard

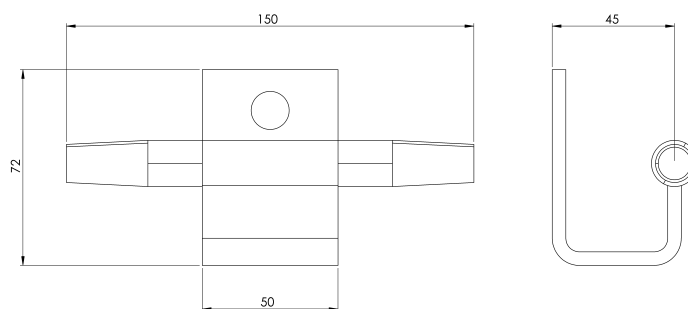
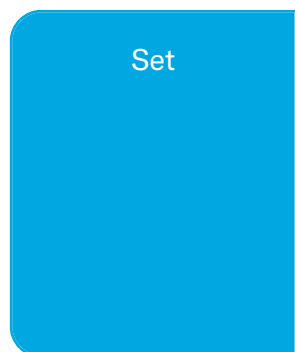
EN 795 Type C

CHARACTERISTICS

General characteristics

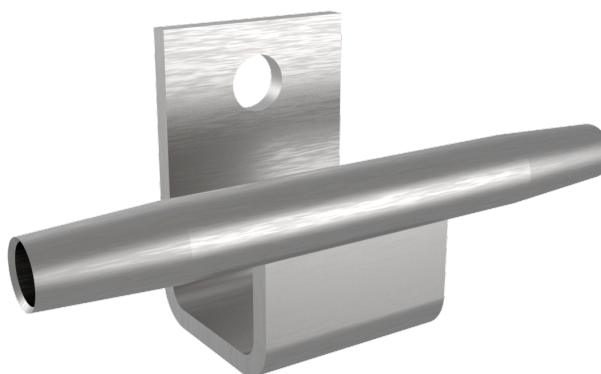
Reference	201804400003
Material	316 Stainless Steel
Weight	0,35 kg
Dimensions	150x72x56 mm

PLANS



LF INTER

Prodotto



Descrizione

- LIFELINE 2000 Componente della linea di vita
- Il loro compito principale è quello di fungere da supporti intermedi per i cavi.
- Possono essere collocati a una distanza massima di 20 m l'uno dall'altro.
- Ha una resistenza di 21kN.

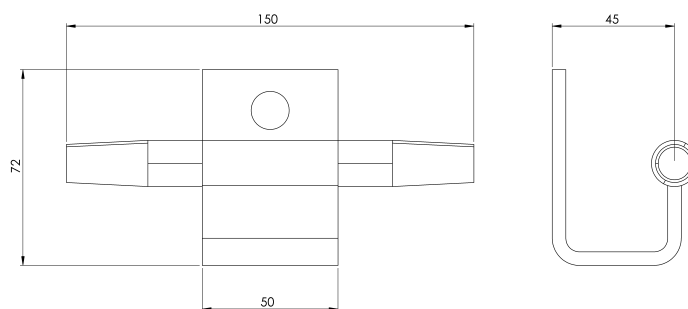
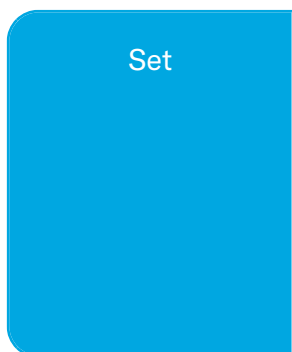
Standard

EN 795 Tipo C

CARATTERISTICHE

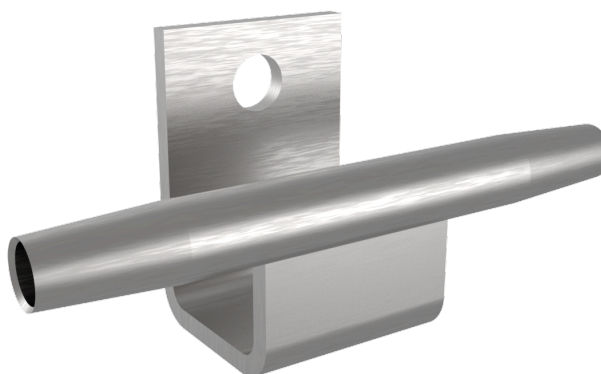
Caratteristiche generali	Riferimento	201804400003
	Materiale	Acciaio inox 316
	Peso	0,35 kg
	Dimensioni	150x72x56 mm

PIANI



LF INTER

Produto



Descrição

- LIFELINE 2000 Componente Lifeline
- A sua principal função é servir de suporte intermédio para os cabos.
- Podem ser colocados a uma distância máxima de 20 m um do outro.
- Tem uma resistência de 21kN.

Padrão

EN 795 Tipo C

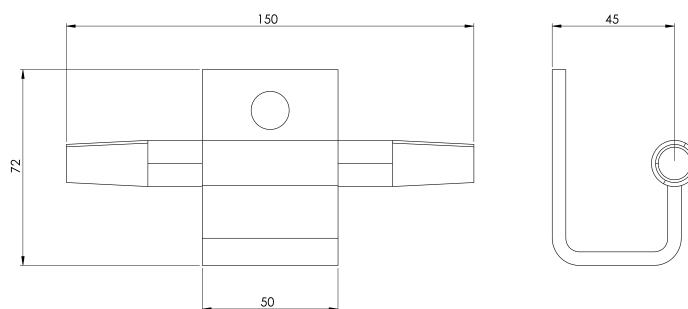
CARACTERÍSTICAS

Caraterísticas gerais

Referência	201804400003
Material	Aço inoxidável 316
Peso	0,35 kg
Dimensões	150x72x56 mm

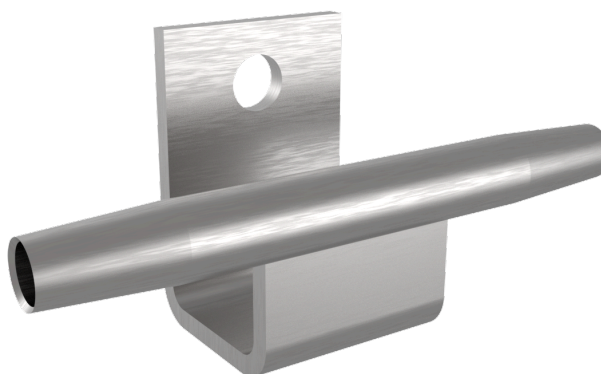
PLANOS

Conjunto



LF INTER

Produit



Description

- LIFELINE 2000 Composant Lifeline
- Leur tâche principale est de servir de support intermédiaire pour les câbles.
- Ils peuvent être placés à une distance maximale de 20 mètres les uns des autres.
- Il a une résistance de 21kN.

Standard

EN 795 Type C

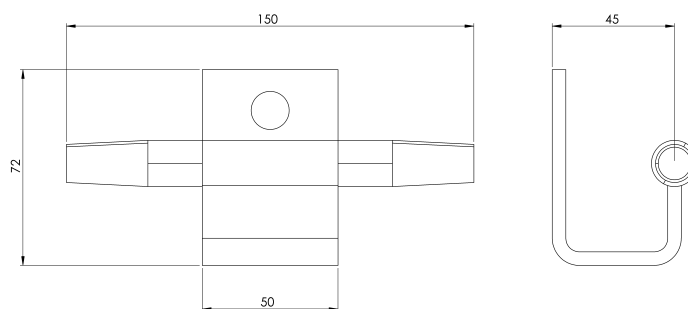
CARACTÉRISTIQUES

Caractéristiques générales

Référence	201804400003
Matériel	Acier inoxydable 316
Poids	0,35 kg
Dimensions	150x72x56 mm

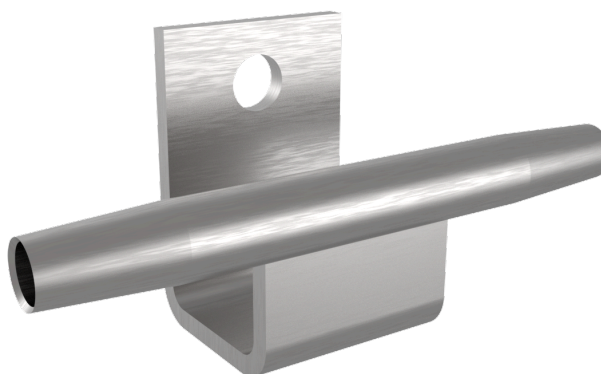
PLANS

Set (jeu de mots)



LF INTER

Produkt



Beschreibung

- LIFELINE 2000 Lebenslinie Komponente
- Ihre Hauptaufgabe besteht darin, als Zwischenstützen für die Kabel zu dienen.
- Sie können in einem Abstand von maximal 20 m zueinander aufgestellt werden.
- Er hat eine Widerstandsfähigkeit von 21kN.

Standard

EN 795 Typ C

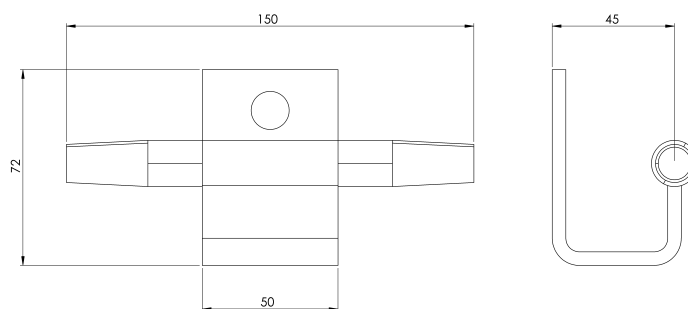
EIGENSCHAFTEN

Allgemeine Merkmale

Referenz	201804400003
Material	Edelstahl 316
Gewicht	0,35 kg
Abmessungen	150x72x56 mm

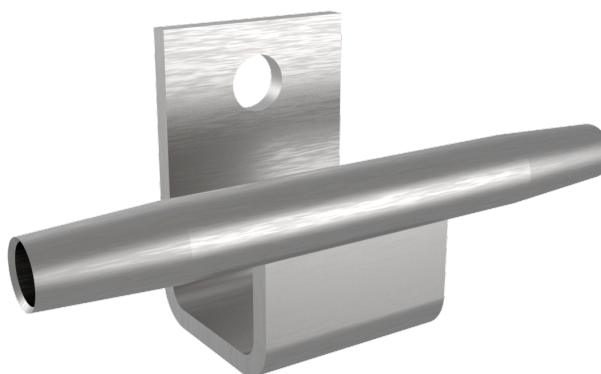
PLANEN

Einstellung



LF INTER

Produkt



Opis

- LIFELINE 2000 Element linii życia
- Ich głównym zadaniem jest działanie jako pośrednie podpory kabli.
- Można je umieszczać w maksymalnej odległości 20 m od siebie.
- Jego wytrzymałość wynosi 21 kN.

Standard

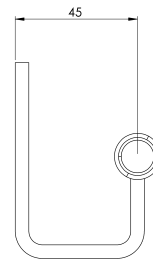
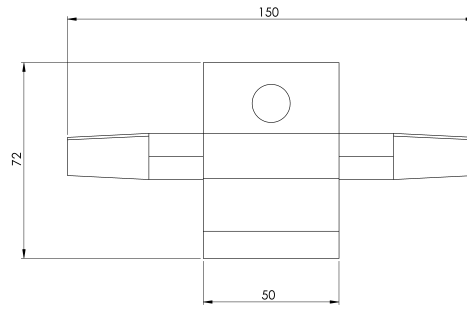
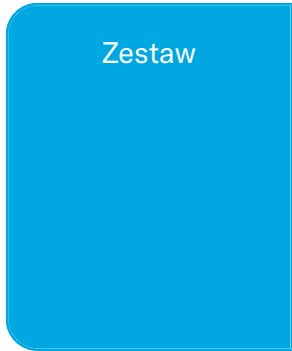
EN 795 Typ C

CHARAKTERYSTYKA

Ogólna charakterystyka

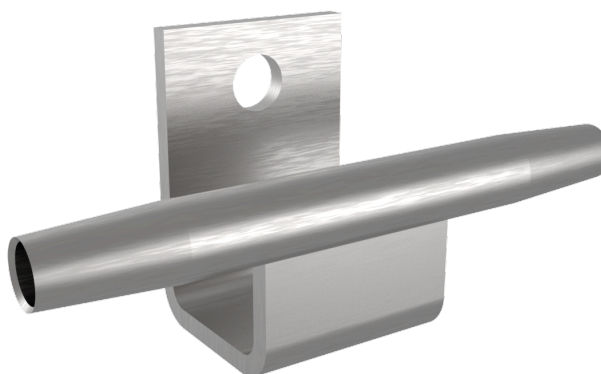
Odniesienie	201804400003
Materiał	Stal nierdzewna 316
Waga	0,35 kg
Wymiary	150x72x56 mm

PLANY



LF INTER

Termék



Leírás

- LIFELINE 2000 Életvonal-összetevő
- Fő feladatuk, hogy közbenső kábeltartóként működjenek.
- Egymástól legfeljebb 20 m távolságra helyezhetők el.
- Ellenállóképessége 21 kN.

Standard

EN 795 C típus

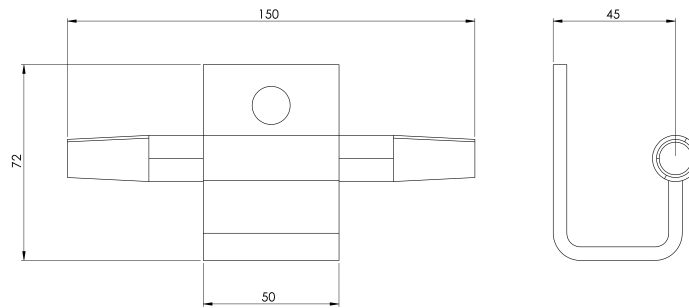
JELLEMZŐK

Általános jellemzők

Hivatkozás	201804400003
Anyag	316 rozsdamentes acél
Súly	0,35 kg
Méret	150x72x56 mm

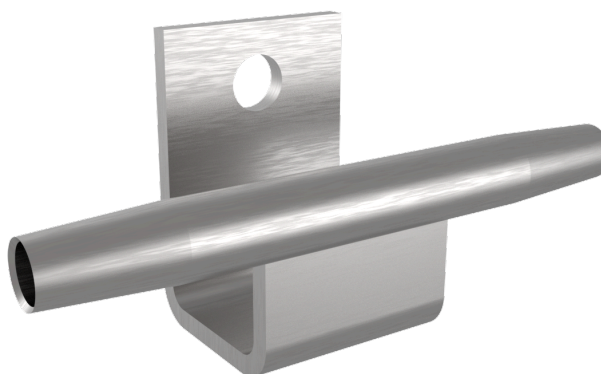
TERVEK

Állítsa be a



LF INTER

Produto



Descrição

- Componente do LIFELINE 2000 Lifeline
- Sua principal tarefa é atuar como suporte intermediário para os cabos.
- Eles podem ser colocados a uma distância máxima de 20 m um do outro.
- Ele tem uma resistência de 21kN.

Padrão

EN 795 Tipo C

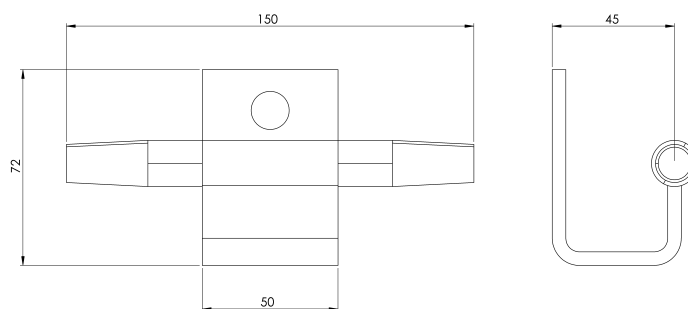
CARACTERÍSTICAS

Características gerais

Referência	201804400003
Material	Aço inoxidável 316
Peso	0,35 kg
Dimensões	150x72x56 mm

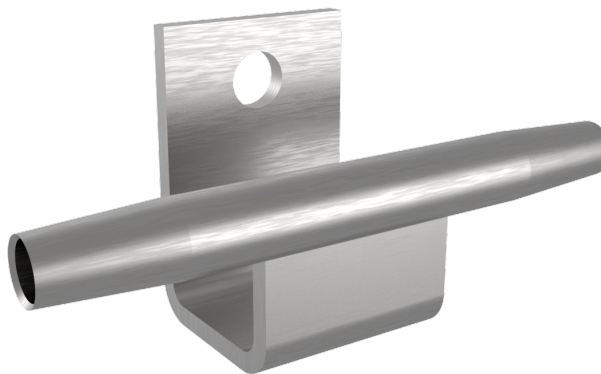
PLANOS

Conjunto



LF INTER

Продукт



Описание

- LIFELINE 2000 Компонент на линията на живота
- Основната им задача е да служат като междинни опори за кабели.
- Те могат да се поставят на максимално разстояние 20 м една от друга.
- Устойчивостта му е 21 kN.

Стандартен

EN 795 Тип C

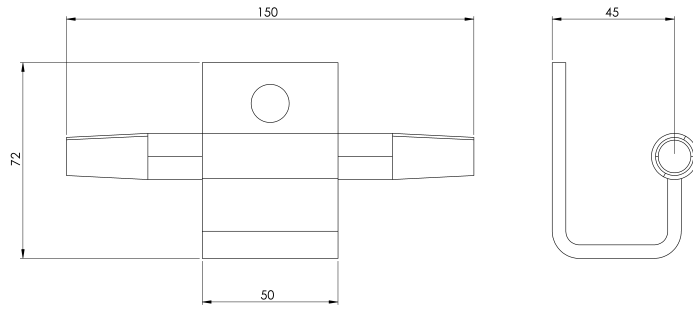
ХАРАКТЕРИСТИКИ

Общи характеристики

Справка	201804400003
Материал	316 неръждаема стомана
Тегло	0,35 кг
Размери	150x72x56 мм

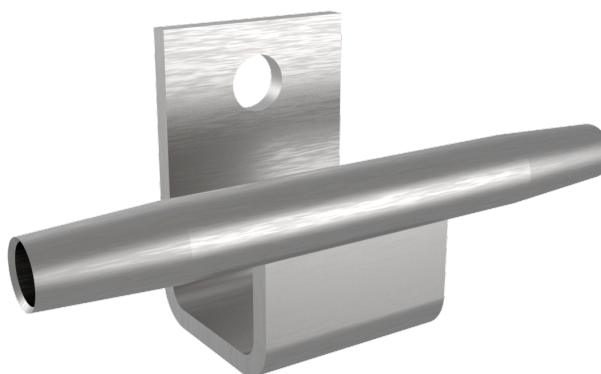
ПЛАНОВЕ

Задайте



LF INTER

Produkt



Beskrivning

- LIFELINE 2000 Lifeline-komponent
- Deras huvuduppgift är att fungera som mellanliggande kabelstöd.
- De kan placeras på ett maximalt avstånd av 20 meter från varandra.
- Den har ett motstånd på 21 kN.

Standard

EN 795 Typ C

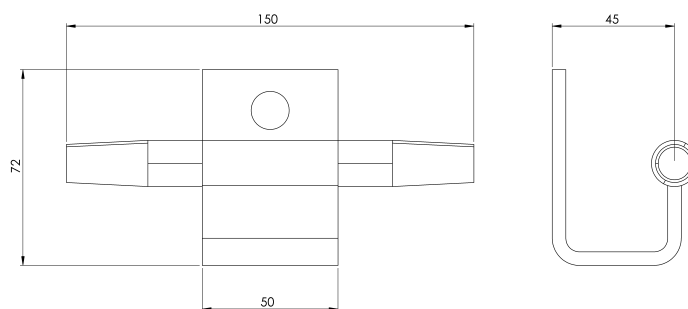
EGENSKAPER

Allmänna egenskaper

Reference (referens)	201804400003
Material	316 Rostfritt stål
Vikt	0,35 kg
Dimensioner	150x72x56 mm

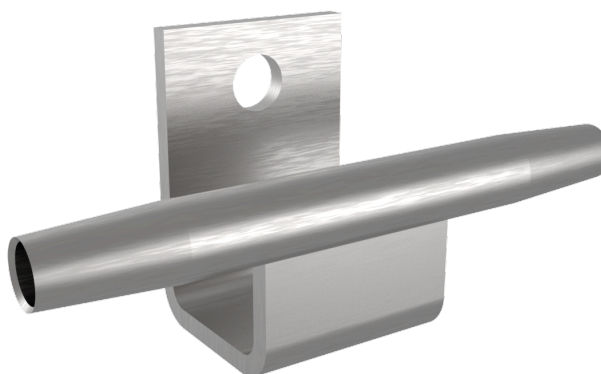
PLANER

Ställ in



LF INTER

Produkt



Popis

- LIFELINE 2000 Komponent Lifeline
- Ich hlavnou úlohou je slúžiť ako medziráhlé káblové podpery.
- Môžu byť od seba vzdialené maximálne 20 m.
- Má odolnosť 21 kN.

Štandard

EN 795 Typ C

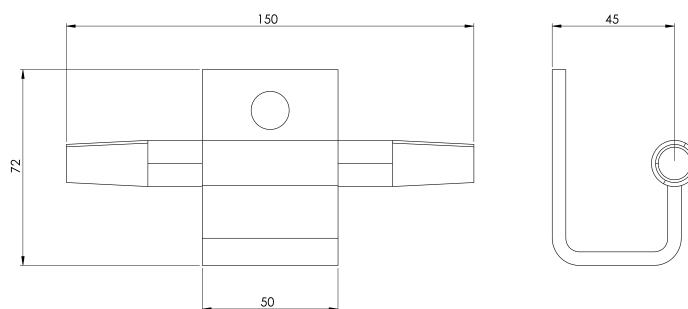
CHARAKTERISTIKA

Všeobecná charakteristika

Referencia	201804400003
Materiál	Nerezová oceľ 316
Hmotnosť	0,35 kg
Rozmery	150x72x56 mm

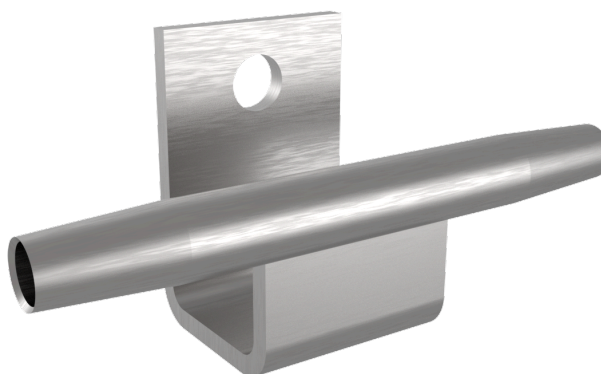
PLÁNY

Nastavenie



LF INTER

Produktas



Aprašymas

- LIFELINE 2000 Lifeline komponentas
- Pagrindinė jų užduotis - atlikti tarpinių kabelių atramų funkciją.
- Juos galima statyti ne didesniu kaip 20 m atstumu vieną nuo kito.
- Jo atsparumas 21 kN.

Standartinis

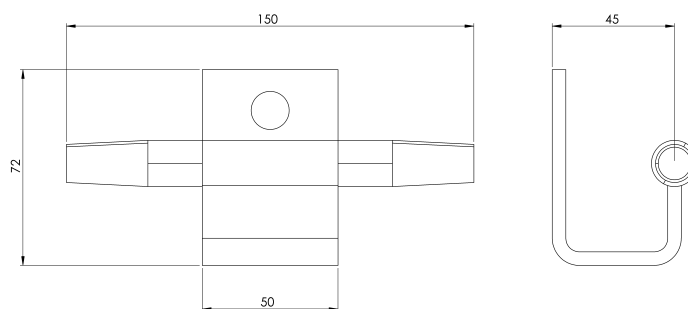
EN 795 C tipas

CHARAKTERISTIKOS

Bendrosios savybės	Nurodymai	201804400003
	Medžiaga	316 nerūdijantis plienas
	Svoris	0,35 kg
	Matmenys	150x72x56 mm

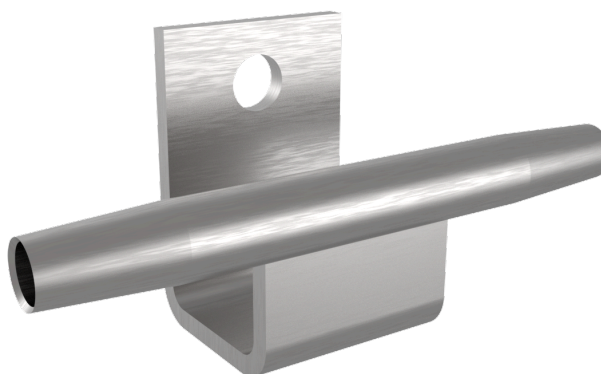
PLANAI

Nustatyti



LF INTER

Produkt



Beskrivelse

- LIFELINE 2000 Lifeline-komponent
- Deres viktigste oppgave er å fungere som mellomliggende kabelstøtter.
- De kan plasseres med en maksimal avstand på 20 meter fra hverandre.
- Den har en motstand på 21 kN.

Standard

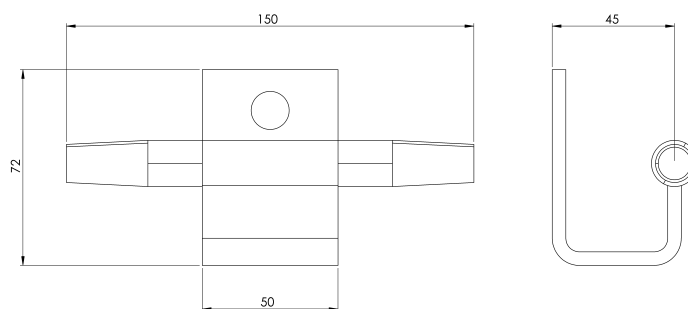
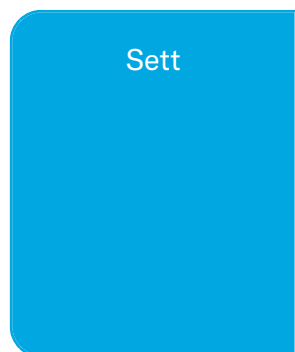
EN 795 Type C

EGENSKAPER

Generelle egenskaper

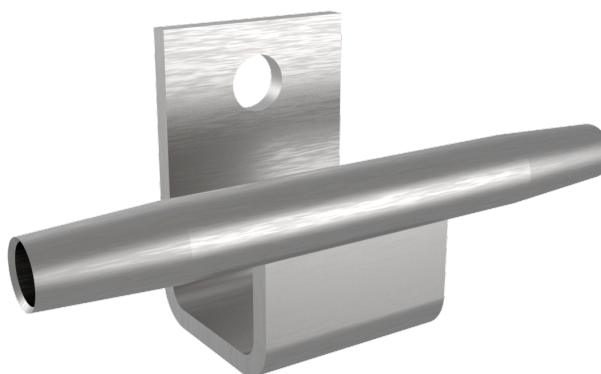
Referanse	201804400003
Materiale	316 rustfritt stål
Vekt	0,35 kg
Dimensjoner	150x72x56 mm

PLANER



LF INTER

Produs



Descriere

- LIFELINE 2000 Componentă Lifeline
- Sarcina lor principală este de a acționa ca suporturi intermediare pentru cabluri.
- Acestea pot fi amplasate la o distanță maximă de 20 m una de cealaltă.
- Are o rezistență de 21kN.

Standard

EN 795 Tip C

CARACTERISTICI

Caracteristici generale

Referință	201804400003
Material	316 Oțel inoxidabil
Greutate	0,35 kg
Dimensiuni	150x72x56 mm

PLANURI

