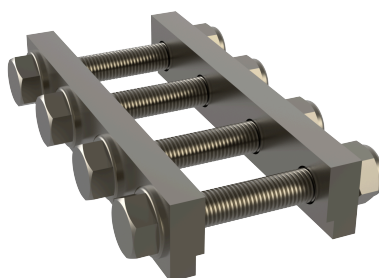


# PIEZA UNIÓN HORIZONTAL - AR UNION

# AR UNION

FICHA TÉCNICA

## Producto



### Descripción

- Componente de la línea de vida ALURAIL.
- Su principal misión es unir los distintos tramos de rail.

### Norma

EN 795 Tipo D

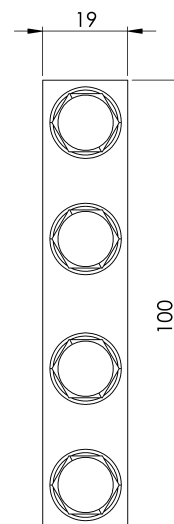
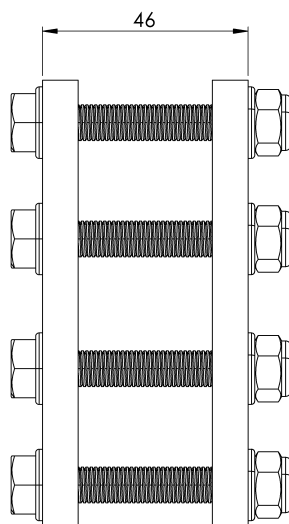
## CARACTERÍSTICAS

### Características generales

Referencia	203007400004
Material	Acero Inox
Peso	0,30 Kg
Dimensiones	100x20x63 mm

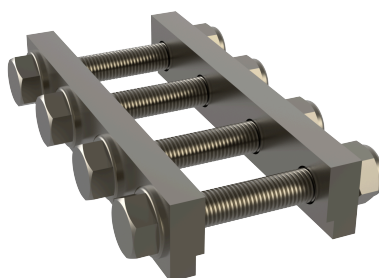
## PLANOS

Conjunto



# AR UNION

## Product



### Description

- Component of the ALURAIL lifeline.
- Its main task is to link the different rail sections.

### Standard

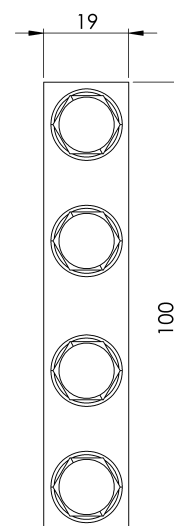
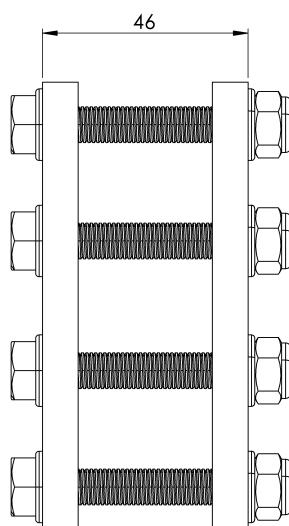
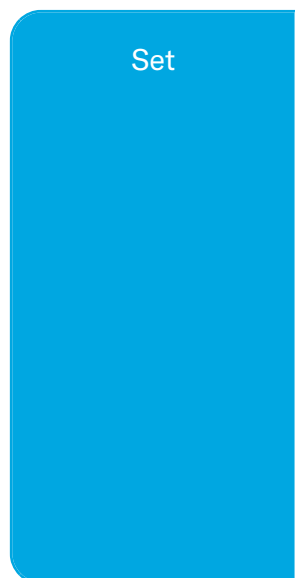
EN 795 Type D

## CHARACTERISTICS

### General characteristics

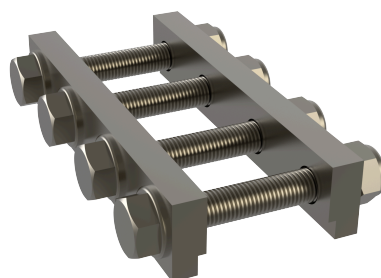
Reference	203007400004
Material	Stainless steel
Weight	0,30 Kg
Dimensions	100x20x63 mm

## PLANS



# Unione di AR

Prodotto



## Descrizione

- Componente della linea di vita ALURAIL.
- Il suo compito principale è quello di collegare le diverse sezioni ferroviarie.

## Standard

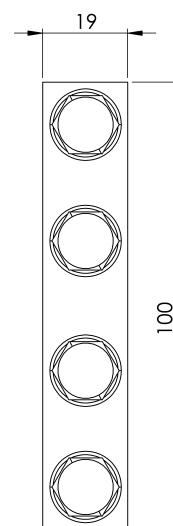
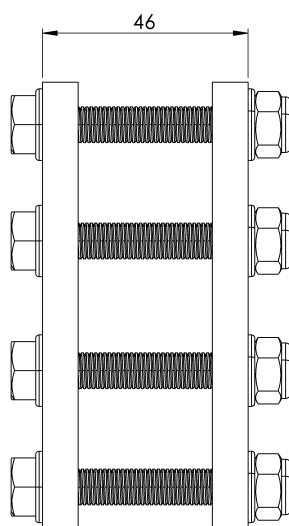
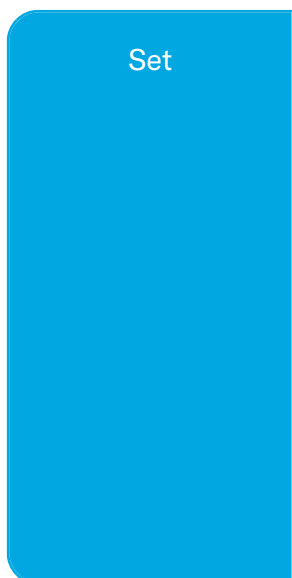
EN 795 Tipo D

## CARATTERISTICHE

### Caratteristiche generali

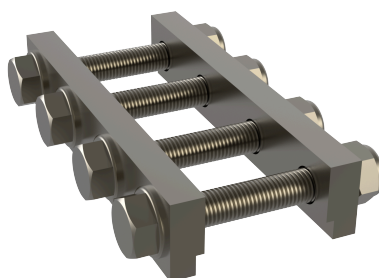
Riferimento	203007400004
Materiale	Acciaio inox
Peso	0,30 Kg
Dimensioni	100x20x63 mm

# PIANI



# AR UNION

Produto



## Descrição

- Componente da linha de vida ALURAIL.
- A sua principal função é ligar as diferentes secções ferroviárias.

## Padrão

EN 795 Tipo D

## CARACTERÍSTICAS

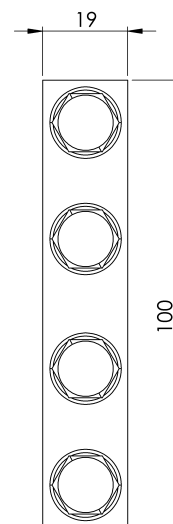
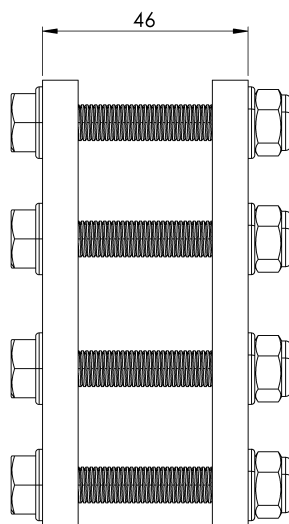
### Caraterísticas gerais

Referência	203007400004
Material	Aço inoxidável
Peso	0,30 kg
Dimensões	100x20x63 mm



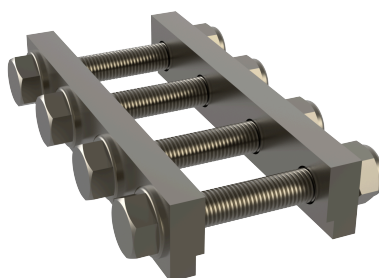
# PLANOS

Conjunto



# AR UNION

Produit



## Description

- Composant de la ligne de vie ALURAIL.
- Sa tâche principale est de relier les différents tronçons ferroviaires.

## Standard

EN 795 Type D

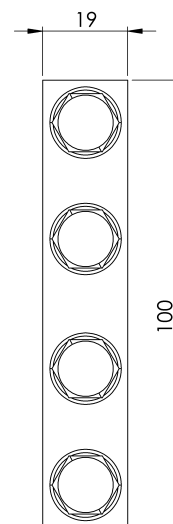
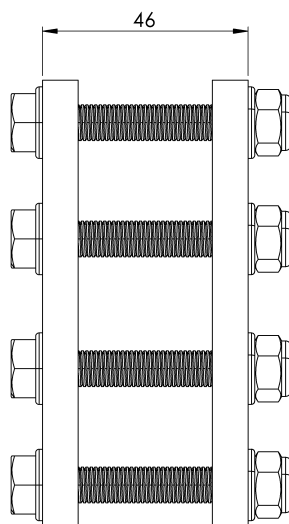
## CARACTÉRISTIQUES

### Caractéristiques générales

Référence	203007400004
Matériel	Acier inoxydable
Poids	0,30 Kg
Dimensions	100x20x63 mm

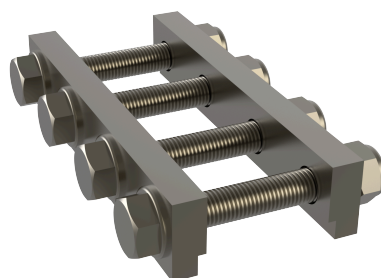
# PLANS

Set (jeu de mots)



# AR UNION

## Produkt



### Beschreibung

- Bestandteil der ALURAIL-Rettungsleine.
- Ihre Hauptaufgabe besteht darin, die verschiedenen Schienenabschnitte zu verbinden.

### Standard

EN 795 Typ D

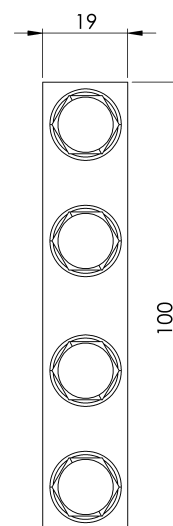
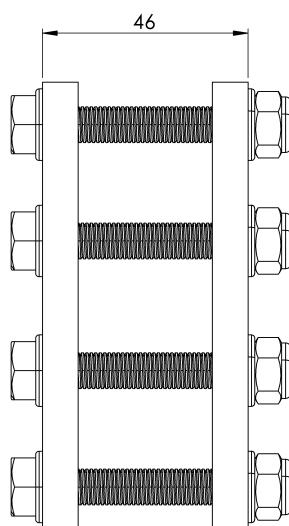
## EIGENSCHAFTEN

### Allgemeine Merkmale

Referenz	203007400004
Material	Rostfreier Stahl
Gewicht	0,30 kg
Abmessungen	100x20x63 mm

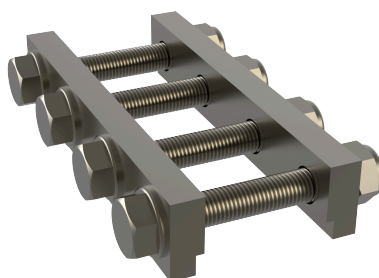
## PLANEN

Satz



# AR UNION

Produkt



Opis

- Element linii życia ALURAIL.
- Jego głównym zadaniem jest łączenie różnych odcinków kolejowych.

Standard

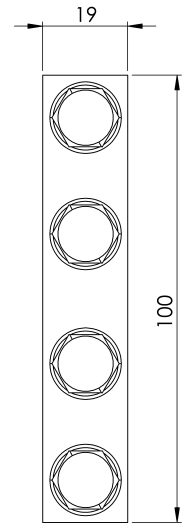
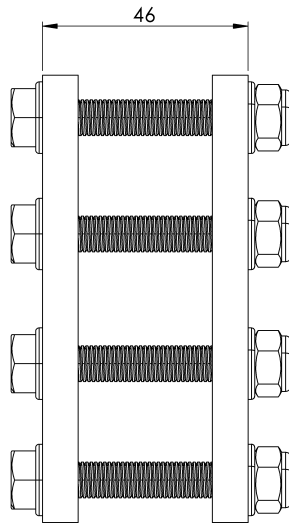
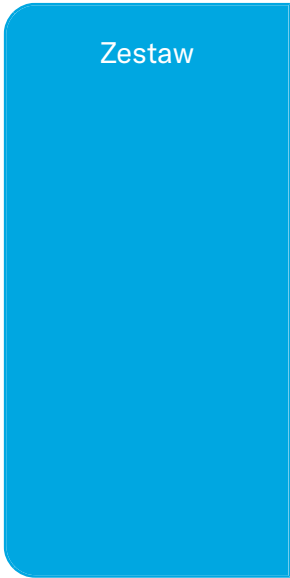
EN 795 Typ D

## CHARAKTERYSTYKA

Ogólna  
charakterystyka

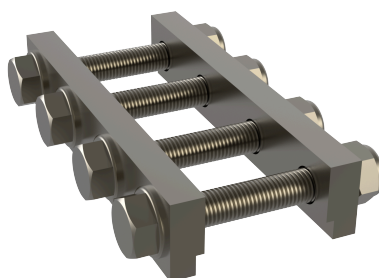
Odniesienie	203007400004
Material	Stal nierdzewna
Waga	0,30 kg
Wymiary	100x20x63 mm

# PLANY



# AR UNION

## Termék



### Leírás

- Az ALURAIL életrajzi elem.
- Fő feladata a különböző vasúti szakaszok összekapcsolása.

### Standard

EN 795 D típus

## JELLEMZŐK

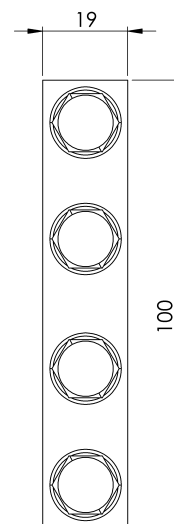
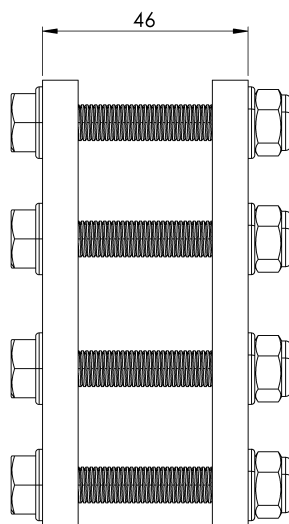
### Általános jellemzők

Hivatkozás	203007400004
Anyag	Rozsdamentes acél
Súly	0,30 kg
Méret	100x20x63 mm



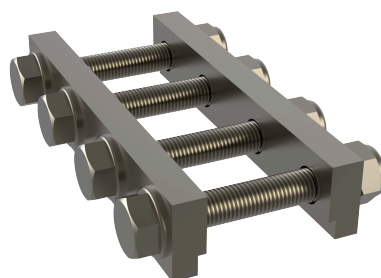
## TERVEK

Állítsa be a



# AR UNION

Produto



## Descrição

- Componente da linha de vida ALURAIL.
- Sua principal tarefa é conectar as diferentes seções ferroviárias.

## Padrão

EN 795 Tipo D

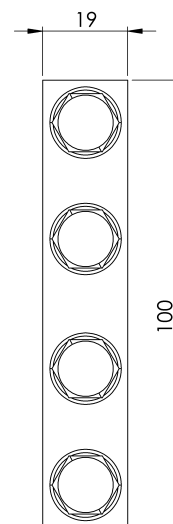
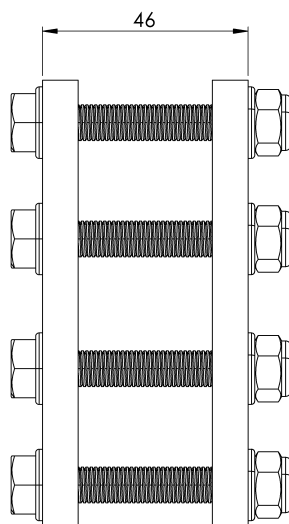
## CARACTERÍSTICAS

### Características gerais

Referência	203007400004
Material	Aço inoxidável
Peso	0,30 kg
Dimensões	100x20x63 mm

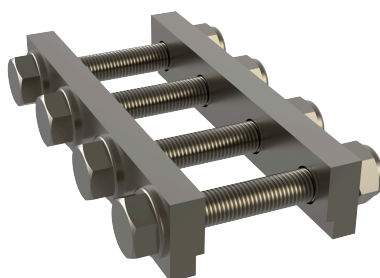
# PLANOS

Conjunto



# AR UNION

Продукт



## Описание

- Компонент на спасителната линия ALURAIL.
- Основната му задача е да свързва различните железопътни участъци.

## Стандартен

EN 795 Тип D

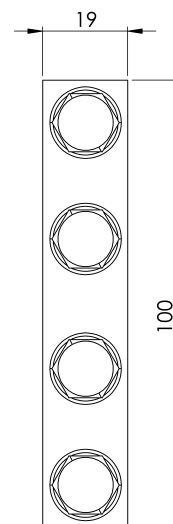
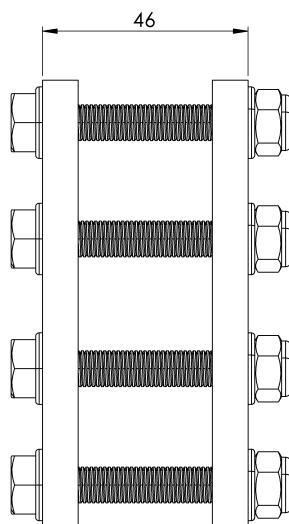
## ХАРАКТЕРИСТИКИ

### Общи характеристики

Справка	203007400004
Материал	Неръждаема стомана
Тегло	0,30 кг
Размери	100x20x63 мм

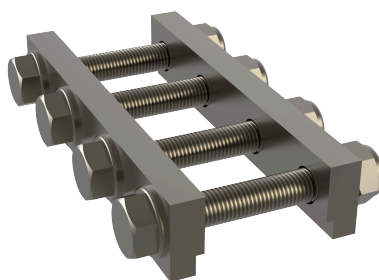
# ПЛАНОВЕ

Задайте



# AR UNION

## Produkt



### Beskrivning

- Komponent i ALURAIL-livlinan.
- Dess huvuduppgift är att binda samman de olika järnvägssektionerna.

### Standard

EN 795 Typ D

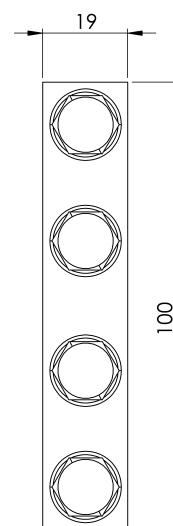
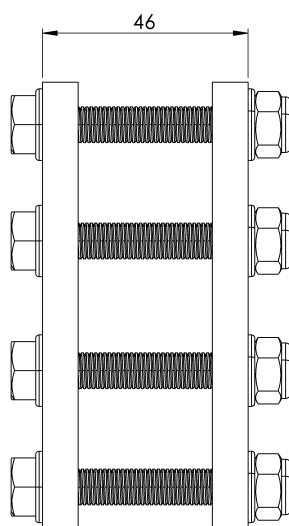
## EGENSKAPER

### Allmänna egenskaper

Reference (referens)	203007400004
Material	Rostfritt stål
Vikt	0,30 kg
Dimensioner	100x20x63 mm

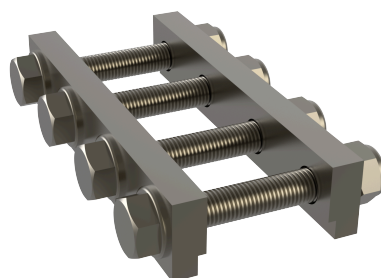
# PLANER

Ställ in



# AR UNION

## Produkt



### Popis

- Súčasť záchranného lana ALURAIL.
- Jeho hlavnou úlohou je spájať jednotlivé železničné úseky.

### Štandard

EN 795 Typ D

## CHARAKTERISTIKA

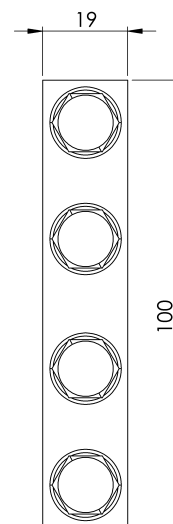
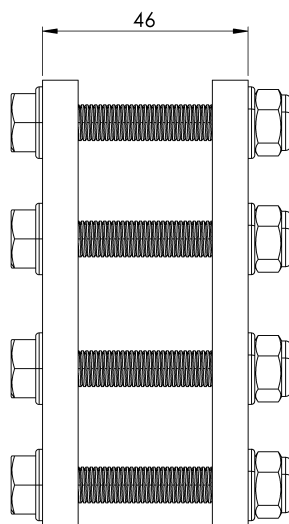
### Všeobecná charakteristika

Referencia	203007400004
Materiál	Nerezová oceľ
Hmotnosť	0,30 kg
Rozmery	100x20x63 mm



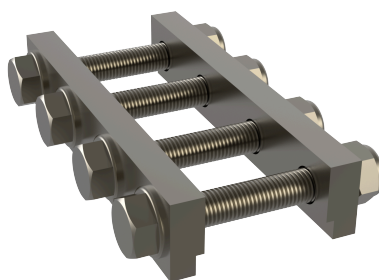
## PLÁNY

Nastavenie



# AR UNION

Produktas



## Aprašymas

- ALURAIL gyvybinės linijos sudedamoji dalis.
- Pagrindinė jo užduotis - sujungti skirtingas geležinkelio atkarpas.

## Standartinis

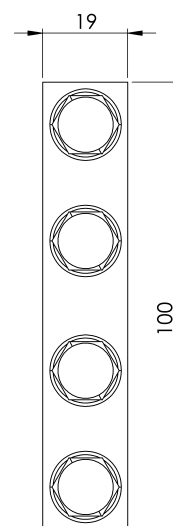
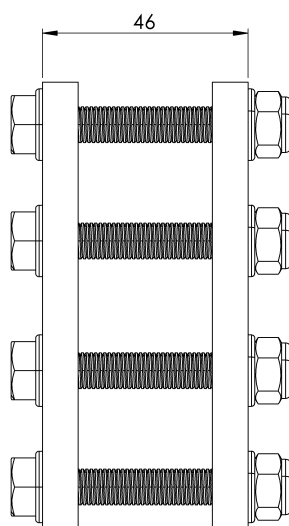
EN 795 D tipas

## CHARAKTERISTIKOS

Bendrosios savybės	Nurodymai	203007400004
	Medžiaga	Nerūdijantis plienas
	Svoris	0,30 kg
	Matmenys	100x20x63 mm

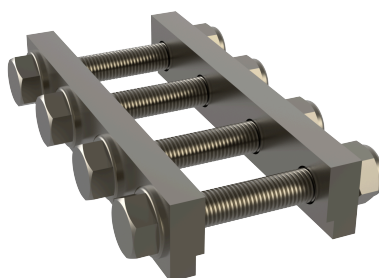
## PLANAI

Nustatyti



# AR UNION

## Produkt



### Beskrivelse

- Komponent i ALURAIL-livlinen.
- Hovedoppgaven er å knytte sammen de ulike jernbanestrekningene.

### Standard

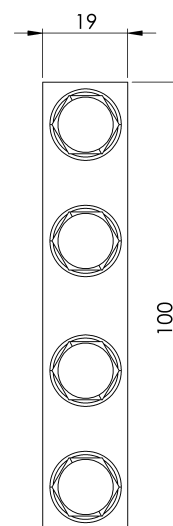
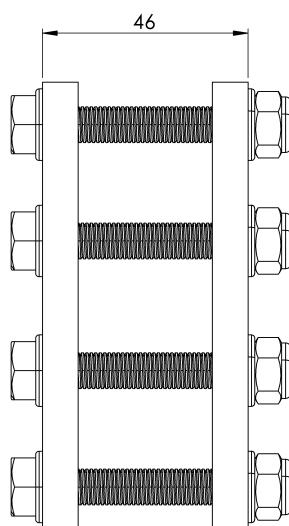
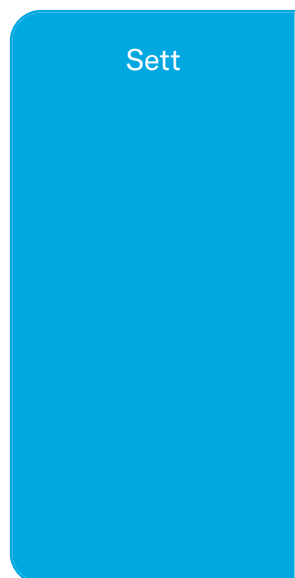
EN 795 Type D

## EGENSKAPER

### Generelle egenskaper

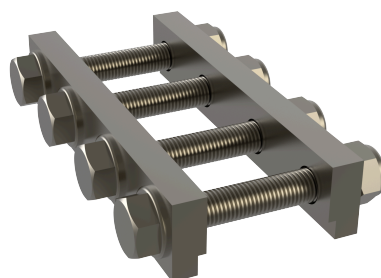
Referanse	203007400004
Materiale	Rustfritt stål
Vekt	0,30 kg
Dimensjoner	100x20x63 mm

# PLANER



# AR UNION

Produs



## Descriere

- Componentă a liniei de viață ALURAIL.
- Sarcina sa principală este de a lega diferitele secțiuni feroviare.

## Standard

EN 795 Tip D

## CARACTERISTICI

### Caracteristici generale

Referință	203007400004
Material	Oțel inoxidabil
Greutate	0,30 Kg
Dimensiuni	100x20x63 mm

## PLANURI

