



CONTRAPESO - SK PESO

SK PESO

FICHA TÉCNICA

Producto



Descripción

- Componente de la línea de vida SEKURCABLE.
- Su principal misión es mantener tensa la línea de vida.
- Se sitúa en la parte inferior y le da mas elasticidad a la línea de vida.

Norma

EN 353-2

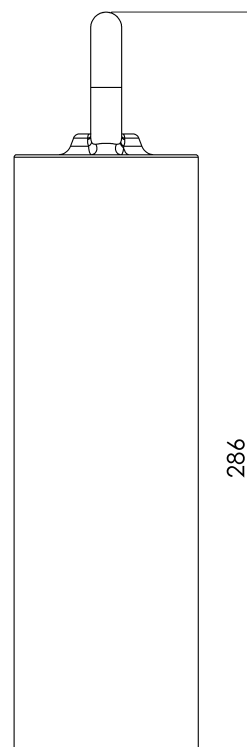
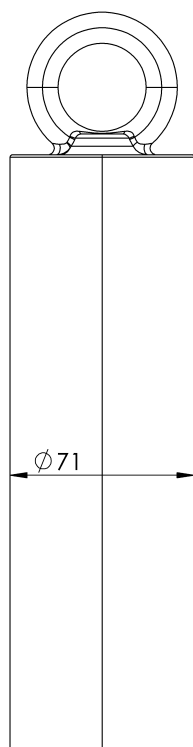
CARACTERÍSTICAS

Características generales

Referencia	203609800013
Material	Acero Galvanizado
Peso	7,5 Kg
Dimensiones	Ø7x280 mm

PLANOS

Conjunto



SK WEIGHT

Product



Description

- SEKURCABLE lifeline component.
- Its main mission is to keep the lifeline taut.
- It is placed at the bottom and gives more elasticity to the lifeline.

Standard

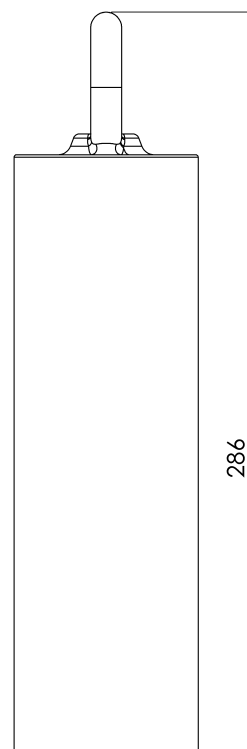
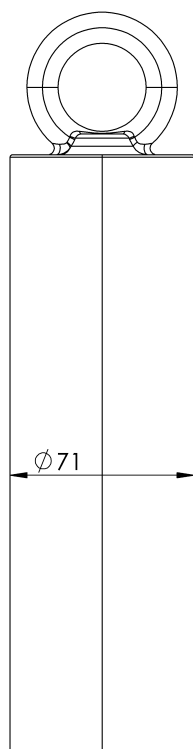
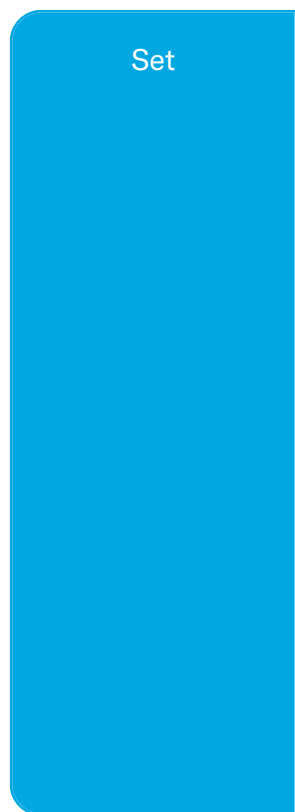
EN 353-2

CHARACTERISTICS

General characteristics

Reference	203609800013
Material	Galvanised steel
Weight	7,5 Kg
Dimensions	Ø7x280 mm

PLANS



PESO SK

Prodotto



Descrizione

- Componente della linea di vita SEKURCABLE.
- La sua missione principale è quella di mantenere tesa la linea di vita.
- Si trova nella parte inferiore e conferisce maggiore elasticità alla linea di vita.

Standard

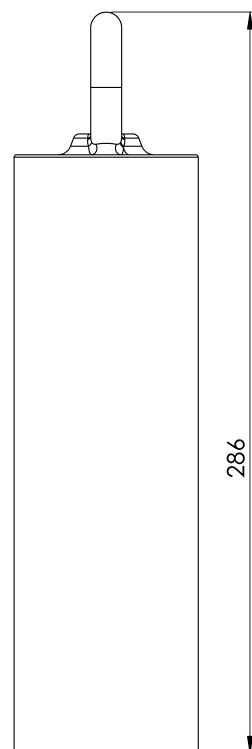
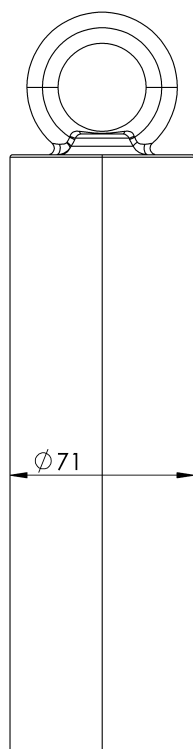
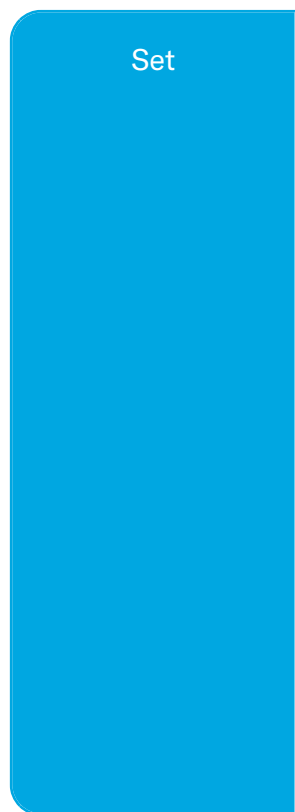
EN 353-2

CARATTERISTICHE

Caratteristiche generali

Riferimento	203609800013
Materiale	Acciaio zincato
Peso	7,5 Kg
Dimensioni	Ø7x280 mm

PIANI



PESO DO SK

Produto



Descrição

- Componente de linha de vida SEKURCABLE.
- A sua principal missão é manter a linha de vida esticada.
- É colocado na parte inferior e dá mais elasticidade à linha de vida.

Padrão

EN 353-2

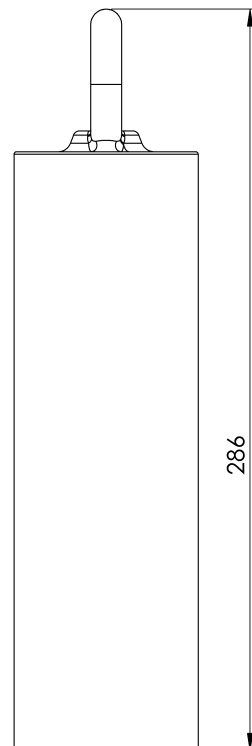
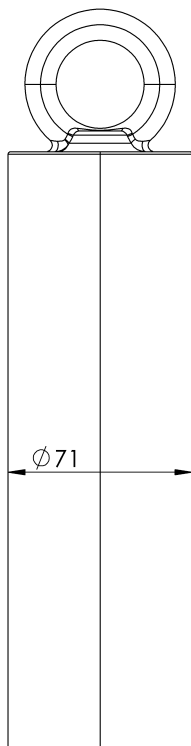
CARACTERÍSTICAS

Caraterísticas gerais

Referência	203609800013
Material	Aço galvanizado
Peso	7,5 kg
Dimensões	Ø7x280 mm

PLANOS

Conjunto



SK POIDS

Produit



Description

- Composant de ligne de vie SEKURCABLE.
- Sa mission principale est de maintenir la ligne de vie tendue.
- Il est placé en bas et donne plus d'élasticité à la ligne de vie.

Standard

EN 353-2

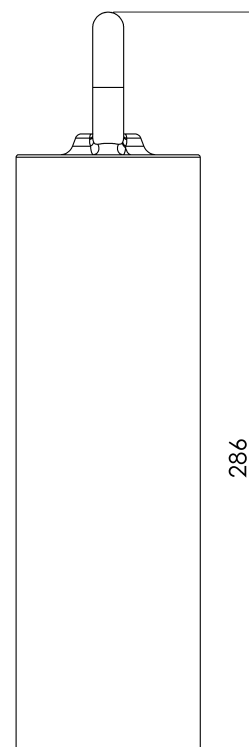
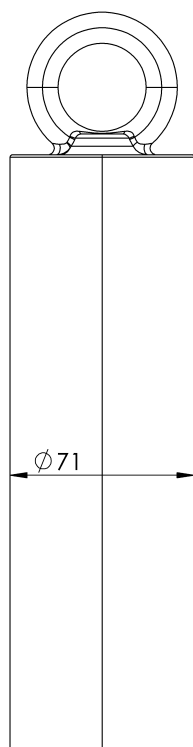
CARACTÉRISTIQUES

Caractéristiques générales

Référence	203609800013
Matériel	Acier galvanisé
Poids	7,5 Kg
Dimensions	Ø7x280 mm

PLANS

Set (jeu de mots)



SK-Gewicht

Produkt



Beschreibung

- SEKURCABLE-Lifeline-Komponente.
- Seine Hauptaufgabe besteht darin, die Rettungsleine straff zu halten.
- Sie ist unten angebracht und verleiht der Rettungsleine mehr Elastizität.

Standard

EN 353-2

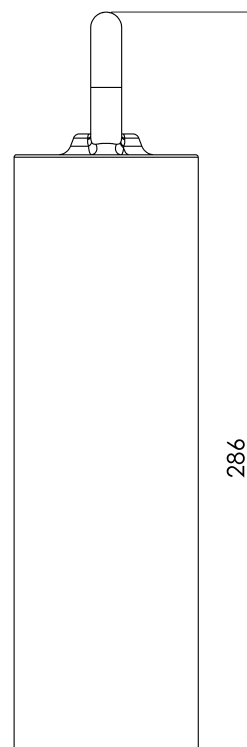
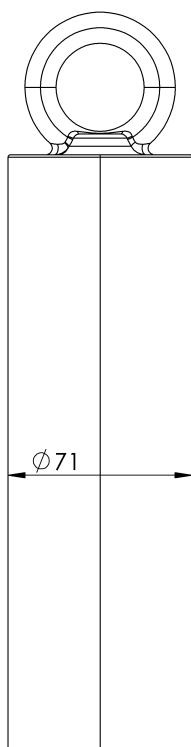
EIGENSCHAFTEN

Allgemeine Merkmale

Referenz	203609800013
Material	Verzinkter Stahl
Gewicht	7,5 kg
Abmessungen	Ø7x280 mm

PLANEN

Einstellung



WAGA SK

Produkt



Opis

- Element linii życia SEKURCABLE.
- Jego głównym zadaniem jest utrzymywanie napiętej linii życia.
- Jest on umieszczony na dole i zapewnia większą elastyczność linii życia.

Standard

EN 353-2

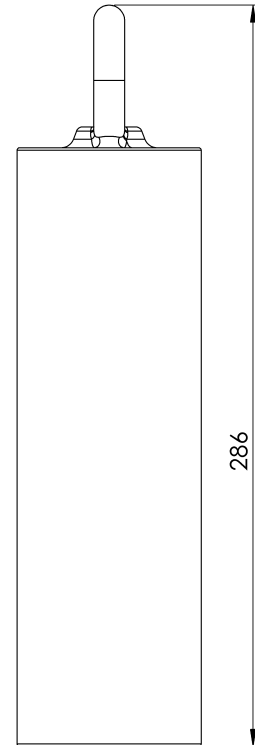
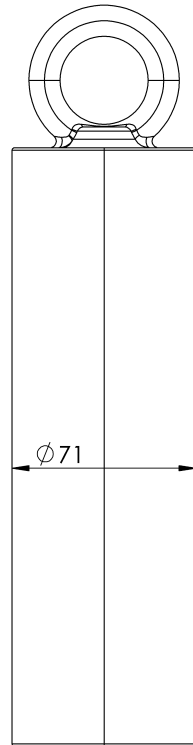
CHARAKTERYSTYKA

Ogólna charakterystyka

Odniesienie	203609800013
Materiał	Stal ocynkowana
Waga	7,5 kg
Wymiary	Ø7x280 mm

PLANY

Zestaw



SK Súly

Termék



Leírás

- SEKURCABLE mentőkötél alkatrész.
- Fő feladata a mentőkötél feszesen tartása.
- Az alján helyezkedik el, és nagyobb rugalmasságot biztosít a mentőkötélnek.

Standard

EN 353-2

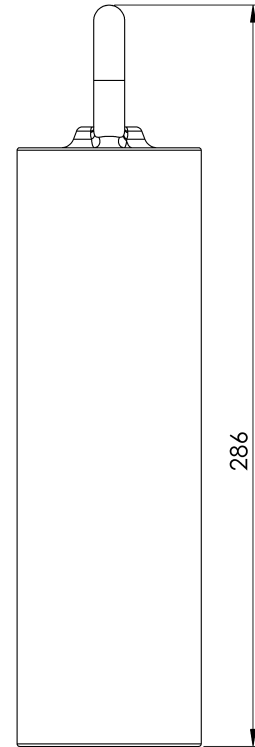
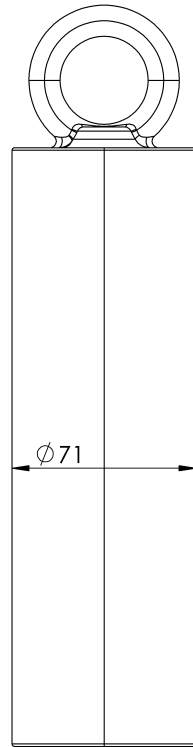
JELLEMZŐK

Általános jellemzők

Hivatkozás	203609800013
Anyag	Horganyzott acél
Súly	7,5 kg
Méret	Ø7x280 mm

TERVEK

Állítsa be a



PESO DO SK

Produto



Descrição

- Componente de linha de vida SEKURCABLE.
- Sua principal missão é manter a linha de vida esticada.
- Ele é colocado na parte inferior e dá mais elasticidade à linha de vida.

Padrão

EN 353-2

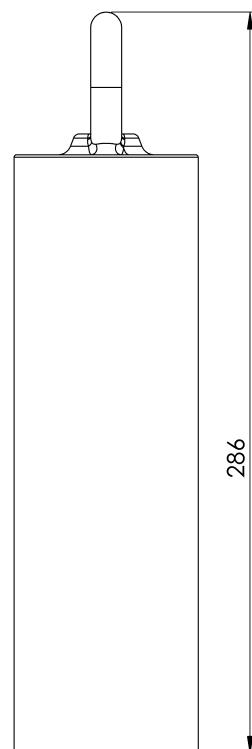
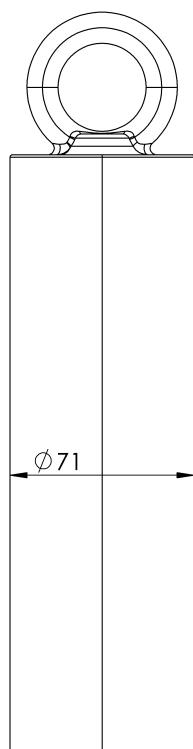
CARACTERÍSTICAS

Características gerais

Referência	203609800013
Material	Aço galvanizado
Peso	7,5 kg
Dimensões	Ø7x280 mm

PLANOS

Conjunto



Тегло на колата

Продукт



Описание

- Компонент на спасителната линия SEKURCABLE.
- Основната му задача е да поддържа спасителното въже опънато.
- Той се поставя в долната част и придава по-голяма еластичност на спасителното въже.

Стандартен

EN 353-2

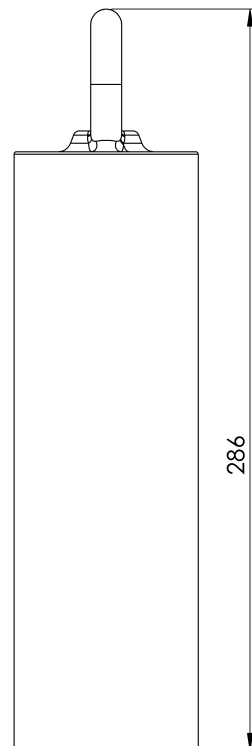
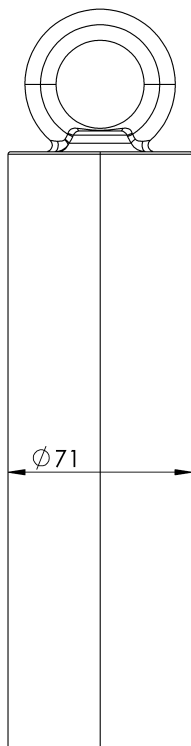
ХАРАКТЕРИСТИКИ

Общи характеристики

Справка	203609800013
Материал	Поцинкована стомана
Тегло	7,5 кг
Размери	Ø7x280 mm

ПЛАНОВЕ

Задайте



SK VIKT

Produkt



Beskrivning

- SEKURCABLE livlinjekomponent.
- Dess huvuduppgift är att hålla livlinan spänd.
- Den är placerad längst ned och ger mer elasticitet åt livlinan.

Standard

EN 353-2

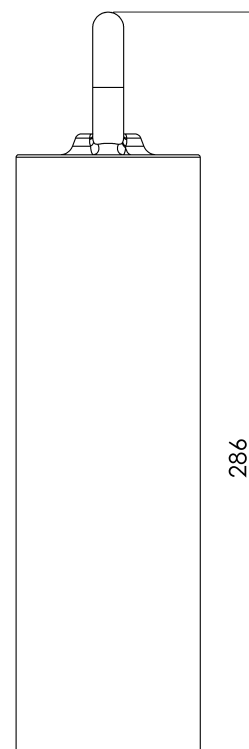
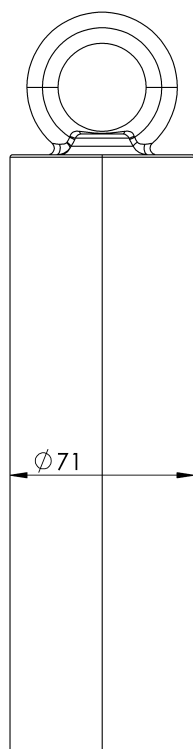
EGENSKAPER

Allmänna egenskaper

Reference (referens)	203609800013
Material	Galvaniserat stål
Vikt	7,5 kg
Dimensioner	Ø7x280 mm

PLANER

Ställ in



SK WEIGHT

Produkt



Popis

- Záchranné lano SEKURCABLE.
- Jeho hlavnou úlohou je udržiavať záchranné lano napnuté.
- Je umiestnený v spodnej časti a dodáva záchrannému lanu väčšiu pružnosť.

Štandard

EN 353-2

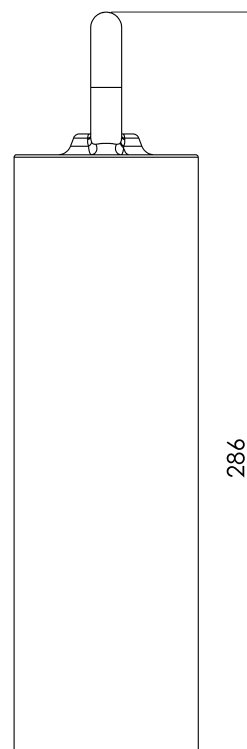
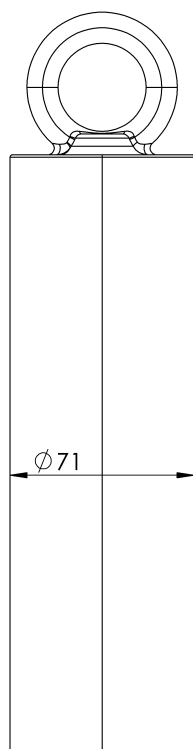
CHARAKTERISTIKA

Všeobecná charakteristika

Referencia	203609800013
Materiál	Pozinkovaná oceľ
Hmotnosť	7,5 kg
Rozmery	Ø7x280 mm

PLÁNY

Nastavenie



SK Svoris

Produktas



Aprašymas

- SEKURCABLE gelbėjimo linijos komponentas.
- Pagrindinė jo užduotis - išlaikyti įtemptą gelbėjimo virvę.
- Jis yra apačioje ir suteikia gelbėjimo virvei daugiau elastingumo.

Standartinis

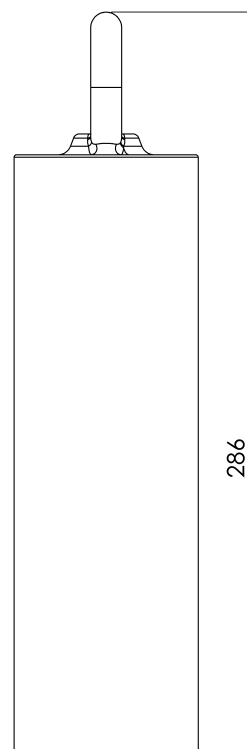
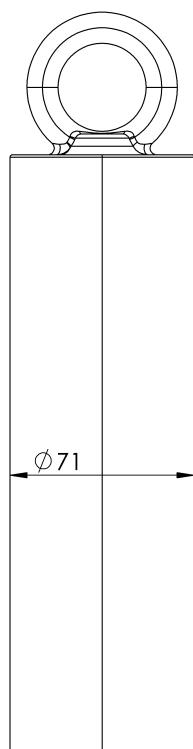
EN 353-2

CHARAKTERISTIKOS

Bendrosios savybės	Nurodymai	203609800013
	Medžiaga	Cinkuotas plienas
	Svoris	7,5 kg
	Matmenys	Ø7x280 mm

PLANAI

Nustatyti



SK VEKT

Produkt



Beskrivelse

- SEKURCABLE livlinekomponent.
- Dens viktigste oppgave er å holde livlinen stram.
- Den er plassert nederst og gir mer elastisitet til livlinen.

Standard

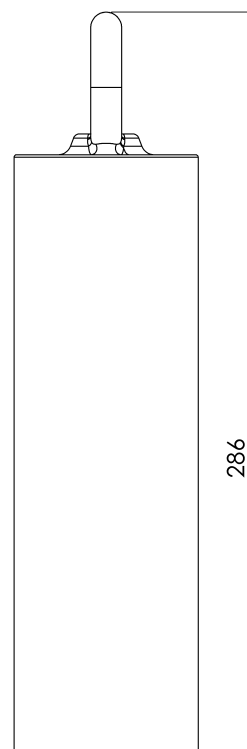
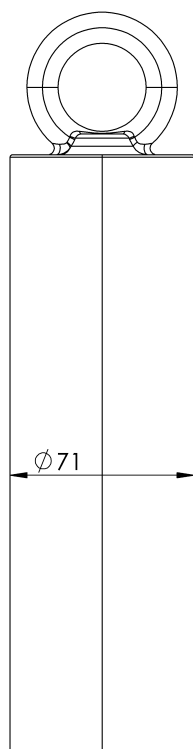
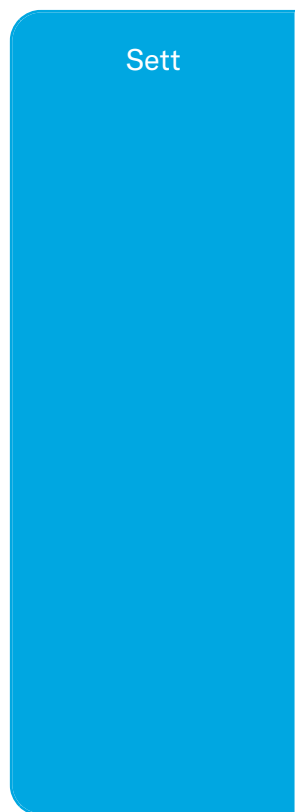
EN 353-2

EGENSKAPER

Generelle egenskaper

Referanse	203609800013
Materiale	Galvanisert stål
Vekt	7,5 kg
Dimensjoner	Ø7x280 mm

PLANER



Greutate SK

Produs



Descriere

- Componentă a liniei de viață SEKURCABLE.
- Misiunea sa principală este de a menține linia de salvare întinsă.
- Acesta este plasat în partea de jos și oferă mai multă elasticitate liniei de salvare.

Standard

EN 353-2

CARACTERISTICI

Caracteristici generale

Referință	203609800013
Material	Oțel galvanizat
Greutate	7,5 Kg
Dimensiuni	Ø7x280 mm

PLANURI

