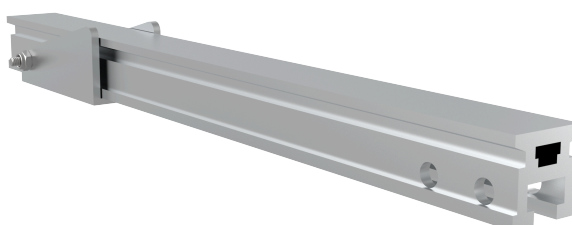


# TOPE BASCULANTE - AR TOPEBAS

# AR TOPEBAS

FICHA TÉCNICA

## Producto



### Descripción

- Componente de la línea de vida ALURAIL.
- Su principal misión es evitar que el carro salga involuntariamente por los extremos de la línea.
- Se suministra integrado en un tramo de raíl de 40cm.

### Norma

EN 795 Tipo D

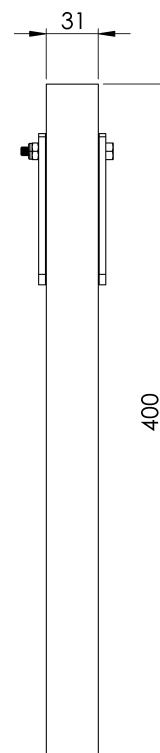
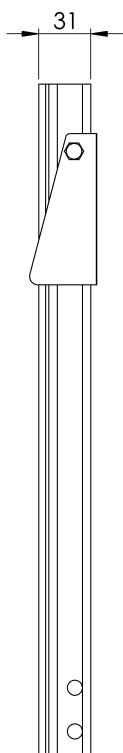
## CARACTERÍSTICAS

### Características generales

|             |                               |
|-------------|-------------------------------|
| Referencia  | 203007400003                  |
| Material    | Aluminio Anodizado AlMgSi 0,5 |
| Peso        | 0,65 Kg                       |
| Dimensiones | 31x31x400 mm                  |

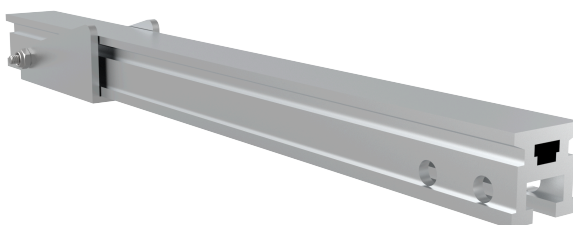
# PLANOS

Conjunto



# AR TOPEBAS

## Product



### Description

- Component of the ALURAIL lifeline.
- Its main task is to prevent the trolley from unintentionally leaving the ends of the line.
- Supplied integrated in a 40cm rail section.

### Standard

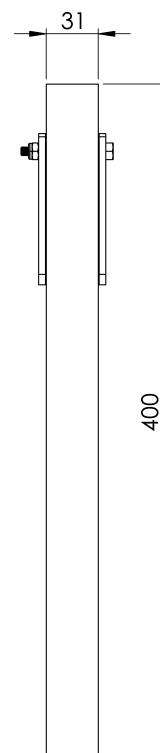
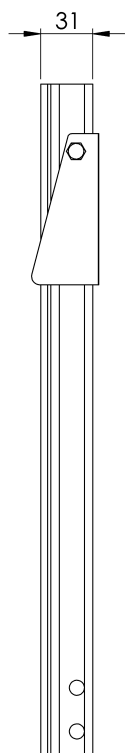
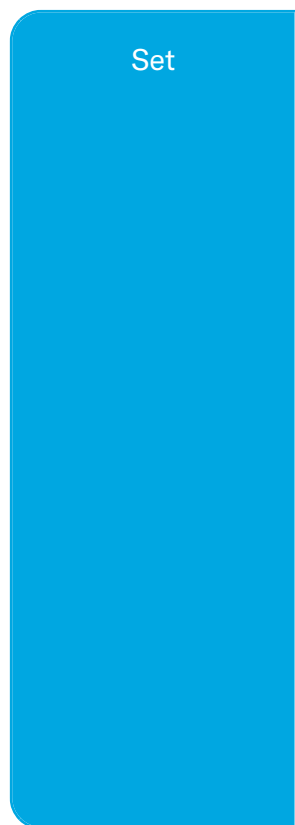
EN 795 Type D

## CHARACTERISTICS

### General characteristics

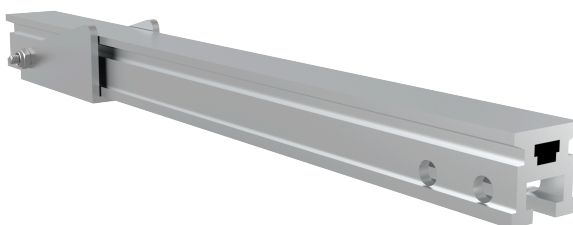
|            |                               |
|------------|-------------------------------|
| Reference  | 203007400003                  |
| Material   | Anodised Aluminium AlMgSi 0,5 |
| Weight     | 0,65 Kg                       |
| Dimensions | 31x31x400 mm                  |

# PLANS



# AR TOPEBAS

Prodotto



## Descrizione

- Componente della linea di vita ALURAIL.
- Il suo compito principale è quello di impedire che il carrello esca involontariamente dalle estremità della linea.
- Fornito integrato in un binario di 40 cm.

## Standard

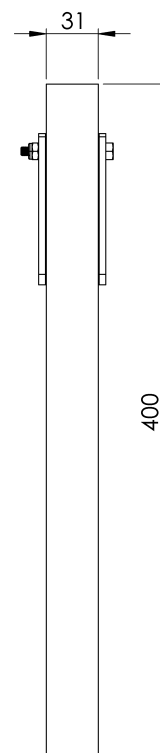
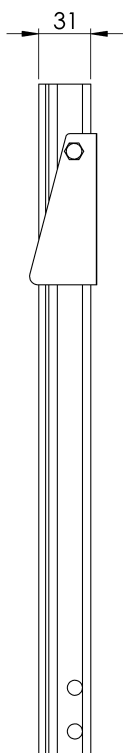
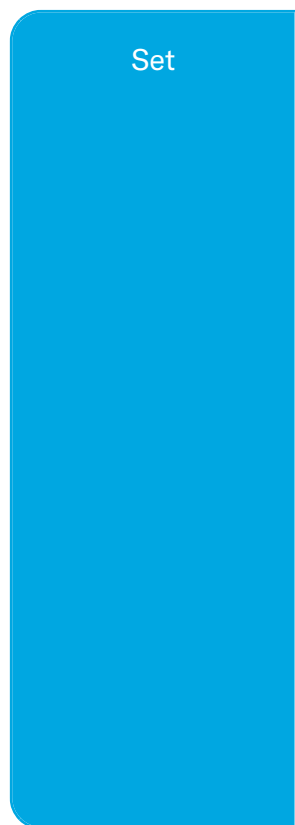
EN 795 Tipo D

# CARATTERISTICHE

## Caratteristiche generali

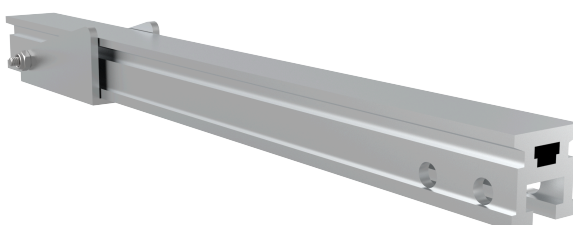
|             |                                 |
|-------------|---------------------------------|
| Riferimento | 203007400003                    |
| Materiale   | Alluminio anodizzato AlMgSi 0,5 |
| Peso        | 0,65 Kg                         |
| Dimensioni  | 31x31x400 mm                    |

# PIANI



# AR TOPEBAS

Produto



## Descrição

- Componente da linha de vida ALURAIL.
- A sua principal função é impedir que o carrinho saia involuntariamente dos extremos da linha.
- Fornecido integrado numa secção de carril de 40 cm.

## Padrão

EN 795 Tipo D

# CARACTERÍSTICAS

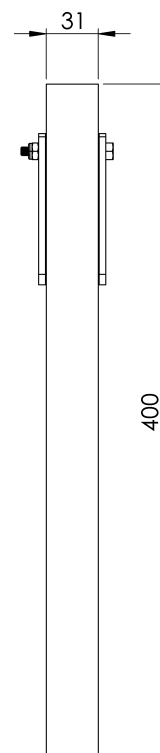
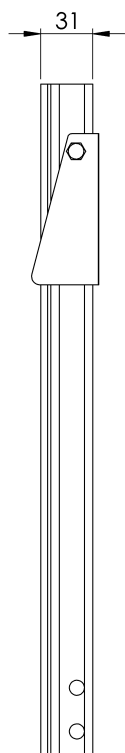
## Caraterísticas gerais

|            |                               |
|------------|-------------------------------|
| Referência | 203007400003                  |
| Material   | Alumínio anodizado AlMgSi 0,5 |
| Peso       | 0,65 kg                       |
| Dimensões  | 31x31x400 mm                  |



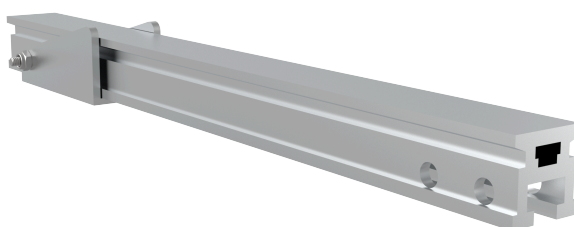
# PLANOS

Conjunto



# AR TOPEBAS

## Produit



### Description

- Composant de la ligne de vie ALURAIL.
- Sa tâche principale est d'empêcher le chariot de quitter involontairement les extrémités de la ligne.
- Livré intégré dans une section de rail de 40 cm.

### Standard

EN 795 Type D

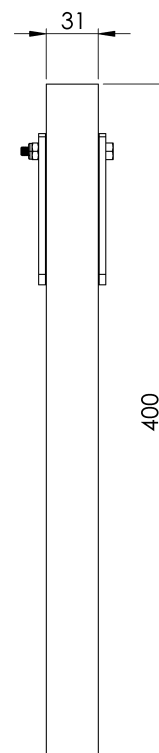
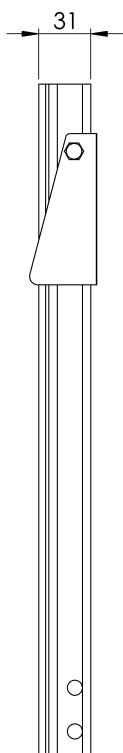
## CARACTÉRISTIQUES

### Caractéristiques générales

|            |                              |
|------------|------------------------------|
| Référence  | 203007400003                 |
| Matériel   | Aluminium anodisé AlMgSi 0,5 |
| Poids      | 0,65 Kg                      |
| Dimensions | 31x31x400 mm                 |

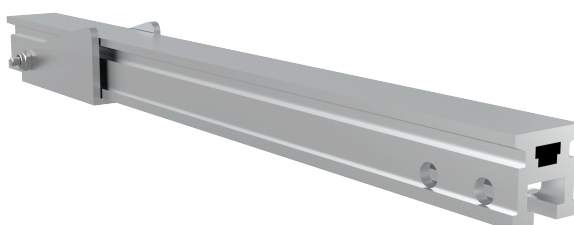
## PLANS

Set (jeu de mots)



# AR TOPEBAS

## Produkt



### Beschreibung

- Bestandteil der ALURAIL-Rettungsleine.
- Seine Hauptaufgabe besteht darin, das unbeabsichtigte Verlassen der Strecke durch den Wagen zu verhindern.
- Die Lieferung erfolgt integriert in einem 40 cm langen Schienenstück.

### Standard

EN 795 Typ D

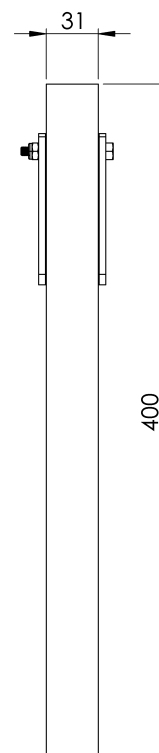
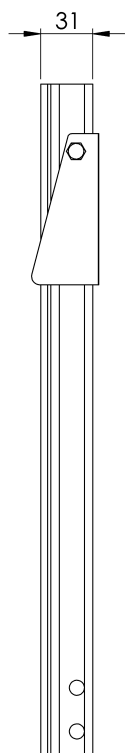
## EIGENSCHAFTEN

### Allgemeine Merkmale

|             |                                 |
|-------------|---------------------------------|
| Referenz    | 203007400003                    |
| Material    | Eloxiertes Aluminium AlMgSi 0,5 |
| Gewicht     | 0,65 kg                         |
| Abmessungen | 31x31x400 mm                    |

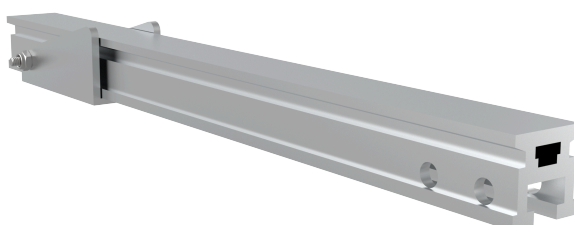
# PLANEN

Satz



# AR TOPEBAS

## Produkt



### Opis

- Element linii życia ALURAIL.
- Jego głównym zadaniem jest zapobieganie niezamierzonemu opuszczeniu przez wózek końca linii.
- Dostarczany zintegrowany z szyną o długości 40 cm.

### Standard

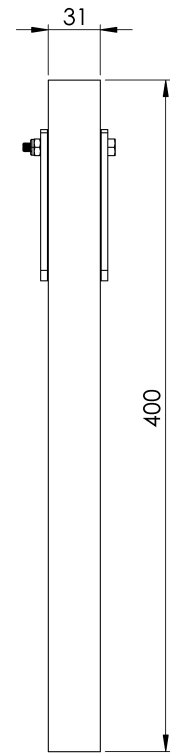
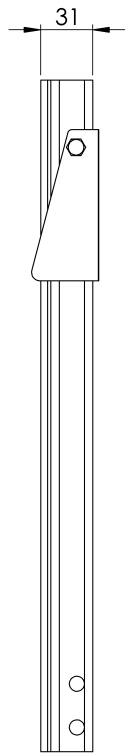
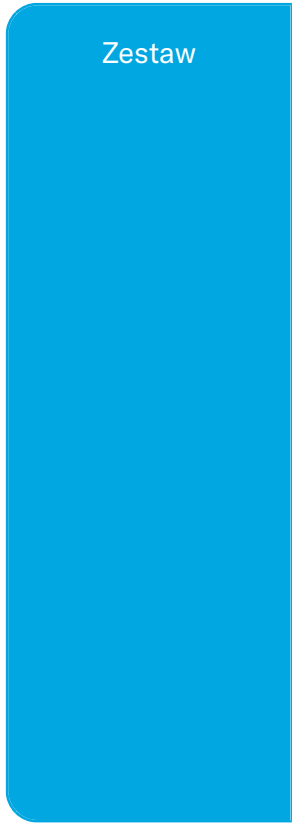
EN 795 Typ D

## CHARAKTERYSTYKA

### Ogólna charakterystyka

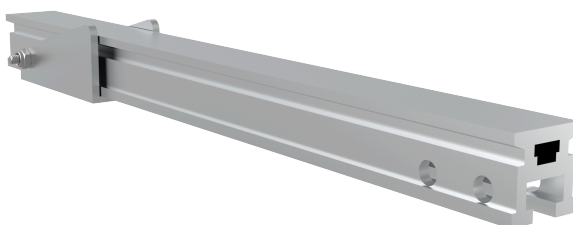
|             |                                |
|-------------|--------------------------------|
| Odniesienie | 203007400003                   |
| Materiał    | Aluminium anodowane AlMgSi 0,5 |
| Waga        | 0,65 kg                        |
| Wymiary     | 31x31x400 mm                   |

# PLANY



# AR TOPEBAS

## Termék



### Leírás

- Az ALURAIL életrajzi elem.
- Fő feladata, hogy megakadályozza, hogy a kocsi akaratlanul elhagyja a vonal végét.
- 40 cm-es sínszelvénybe beépítve szállítjuk.

### Standard

EN 795 D típus

## JELLEMZŐK

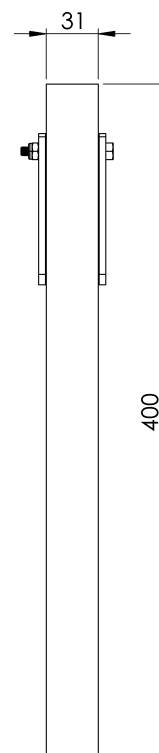
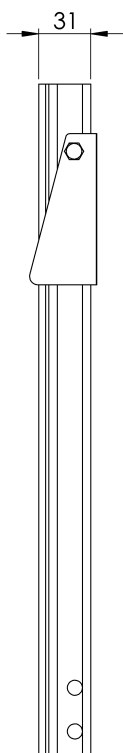
### Általános jellemzők

|            |                              |
|------------|------------------------------|
| Hivatkozás | 203007400003                 |
| Anyag      | Eloxált alumínium AlMgSi 0,5 |
| Súly       | 0,65 kg                      |
| Méret      | 31x31x400 mm                 |



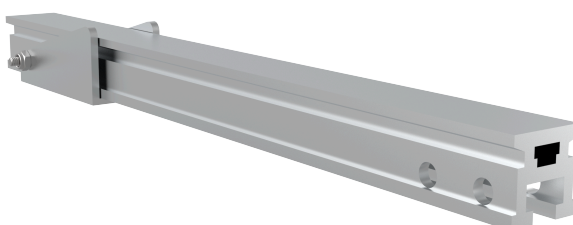
## TERVEK

Állítsa be a



# AR TOPEBAS

## Produto



### Descrição

- Componente da linha de vida ALURAIL.
- Sua principal tarefa é evitar que o carrinho saia involuntariamente das extremidades da linha.
- Fornecido integrado em uma seção de trilho de 40 cm.

### Padrão

EN 795 Tipo D

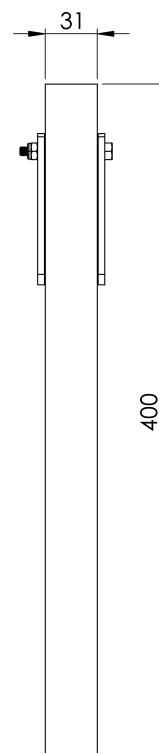
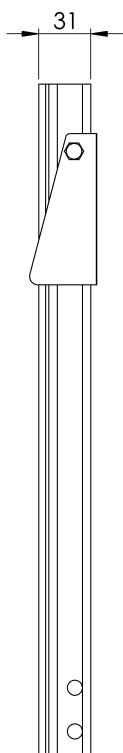
## CARACTERÍSTICAS

### Características gerais

|            |                               |
|------------|-------------------------------|
| Referência | 203007400003                  |
| Material   | Alumínio anodizado AlMgSi 0,5 |
| Peso       | 0,65 kg                       |
| Dimensões  | 31x31x400 mm                  |

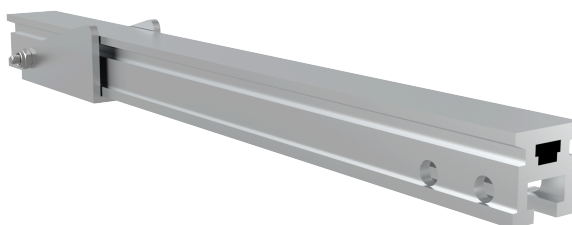
# PLANOS

Conjunto



# Ар Топебас

Продукт



## Описание

- Компонент на спасителната линия ALURAIL.
- Основната му задача е да предотврати неволното излизане на количката от края на линията.
- Доставя се интегриран в 40-сантиметрова релсова секция.

## Стандартен

EN 795 Тип D

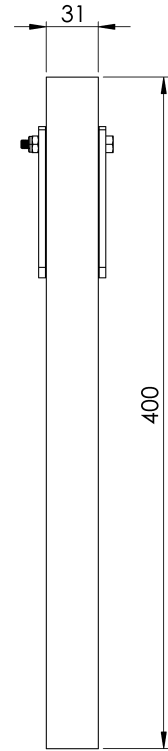
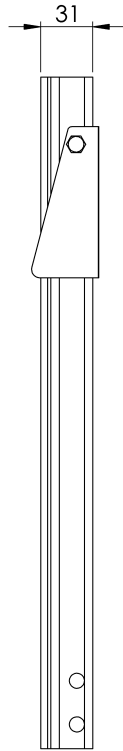
## ХАРАКТЕРИСТИКИ

### Общи характеристики

|          |                                |
|----------|--------------------------------|
| Справка  | 203007400003                   |
| Материал | Анодизиран алуминий AlMgSi 0,5 |
| Тегло    | 0,65 кг                        |
| Размери  | 31x31x400 мм                   |

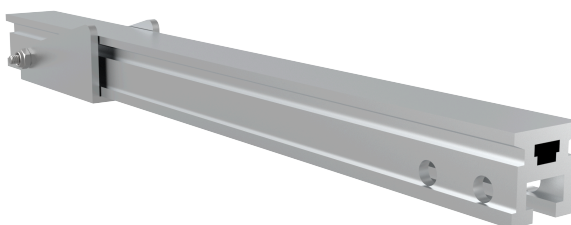
# ПЛАНОВЕ

Задайте



# AR TOPEBAS

## Produkt



### Beskrivning

- Komponent i ALURAIL-livlinan.
- Dess huvuduppgift är att förhindra att vagnen oavsiktligt lämnar linjens ändar.
- Levereras integrerad i en 40 cm lång skensektion.

### Standard

EN 795 Typ D

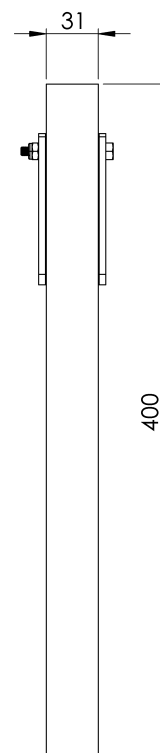
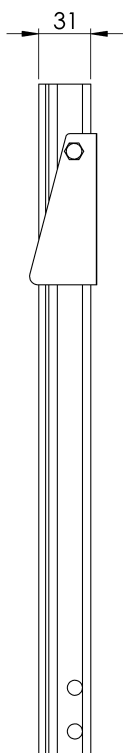
## EGENSKAPER

### Allmänna egenskaper

|                      |                                 |
|----------------------|---------------------------------|
| Reference (referens) | 203007400003                    |
| Material             | Anodiserat aluminium AlMgSi 0,5 |
| Vikt                 | 0,65 kg                         |
| Dimensioner          | 31x31x400 mm                    |

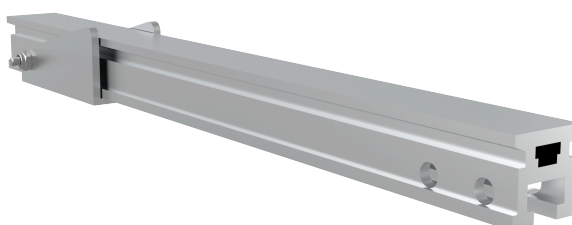
# PLANER

Ställ in



# AR TOPEBAS

## Produkt



### Popis

- Súčasť záchranného lana ALURAIL.
- Jeho hlavnou úlohou je zabrániť tomu, aby vozík neúmyselne opustil konce trate.
- Dodáva sa integrovaný v 40 cm koľajničkovej časti.

### Štandard

EN 795 Typ D

## CHARAKTERISTIKA

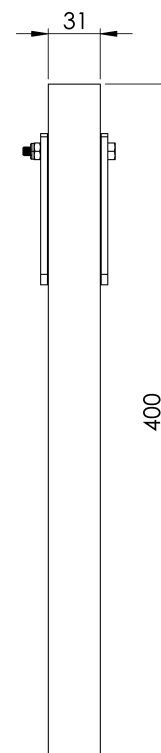
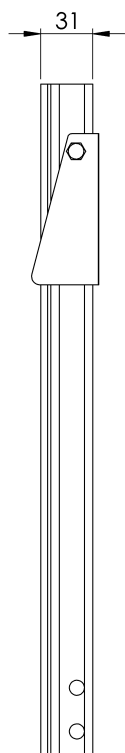
### Všeobecná charakteristika

|            |                             |
|------------|-----------------------------|
| Referencia | 203007400003                |
| Materiál   | Eloxovaný hliník AlMgSi 0,5 |
| Hmotnosť   | 0,65 kg                     |
| Rozmery    | 31x31x400 mm                |



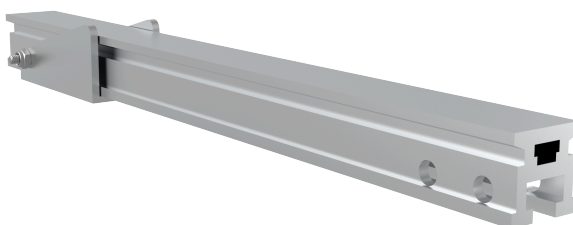
## PLÁNY

Nastavenie



# AR TOPEBAS

Produktas



## Aprašymas

- ALURAIL gyvybinės linijos sudedamoji dalis.
- Pagrindinė jo užduotis - neleisti vežimėliui netyčia išvažiuoti iš linijos galų.
- Tiekiamas integruotas į 40 cm ilgio bėgio sekciją.

## Standartinis

EN 795 D tipas

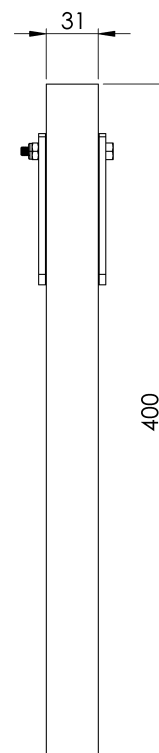
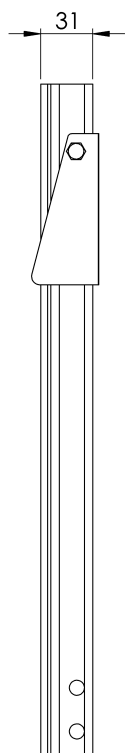
# CHARAKTERISTIKOS

## Bendrosios savybės

|           |                               |
|-----------|-------------------------------|
| Nurodymai | 203007400003                  |
| Medžiaga  | Anoduoto aliuminio AlMgSi 0,5 |
| Svoris    | 0,65 kg                       |
| Matmenys  | 31x31x400 mm                  |

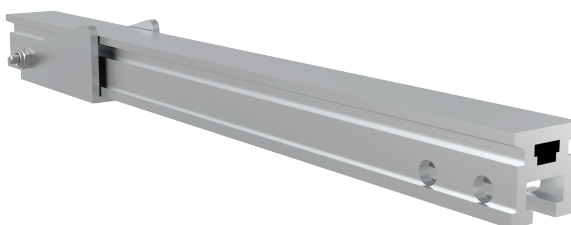
## PLANAI

Nustatyti



# AR TOPEBAS

## Produkt



### Beskrivelse

- Komponent i ALURAIL-livlinen.
- Hovedoppgaven er å forhindre at vognen utilsiktet forlater endene av linjen.
- Leveres integrert i en 40 cm lang skinneseksjon.

### Standard

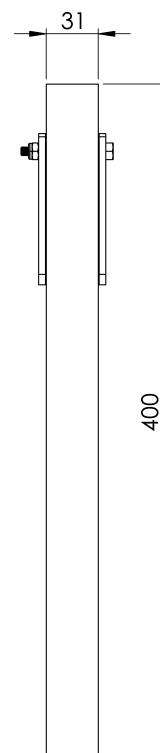
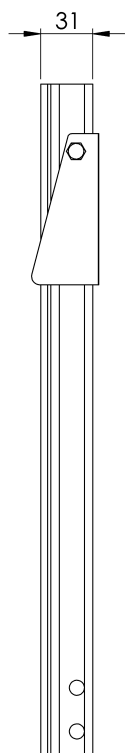
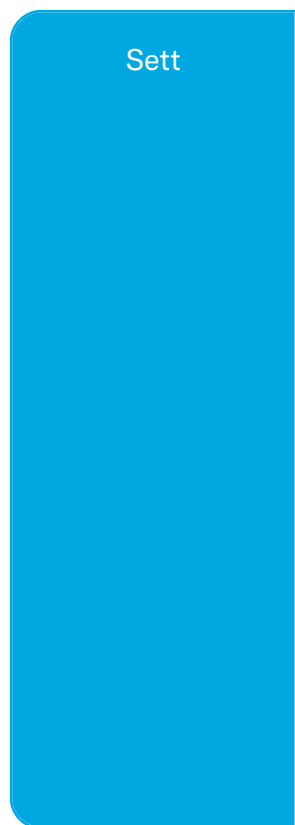
EN 795 Type D

## EGENSKAPER

### Generelle egenskaper

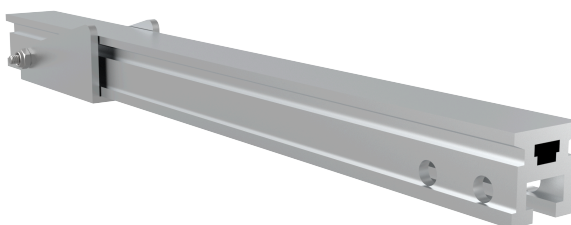
|             |                                |
|-------------|--------------------------------|
| Referanse   | 203007400003                   |
| Materiale   | Anodisert aluminium AlMgSi 0,5 |
| Vekt        | 0,65 kg                        |
| Dimensjoner | 31x31x400 mm                   |

# PLANER



# AR TOPEBAS

Produs



## Descriere

- Componentă a liniei de viață ALURAIL.
- Sarcina sa principală este de a preveni ieșirea neintenționată a căruciorului de la capetele liniei.
- Livrat integrat într-o secțiune de șină de 40 cm.

## Standard

EN 795 Tip D

# CARACTERISTICI

## Caracteristici generale

|            |                              |
|------------|------------------------------|
| Referință  | 203007400003                 |
| Material   | Aluminiu anodizat AlMgSi 0,5 |
| Greutate   | 0,65 Kg                      |
| Dimensiuni | 31x31x400 mm                 |

# PLANURI

