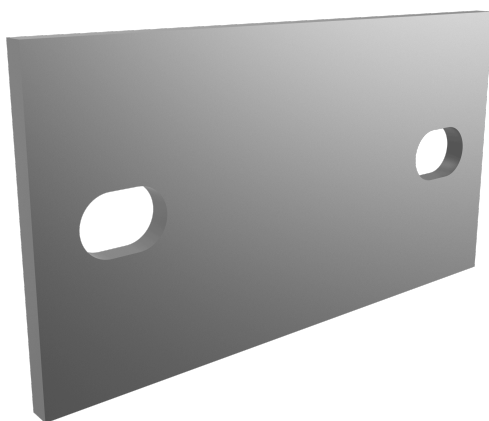


LLANTA PARA SOPORTE TECHO - SR PLET SOPTE

SR PLET SOPTE

FICHA TÉCNICA

Producto



Descripción

- Componente de la línea de vida SEKURAIL.
- Su principal misión es poder abrazar al SR SOPTE en las alas inferiores a 90mm.

Norma

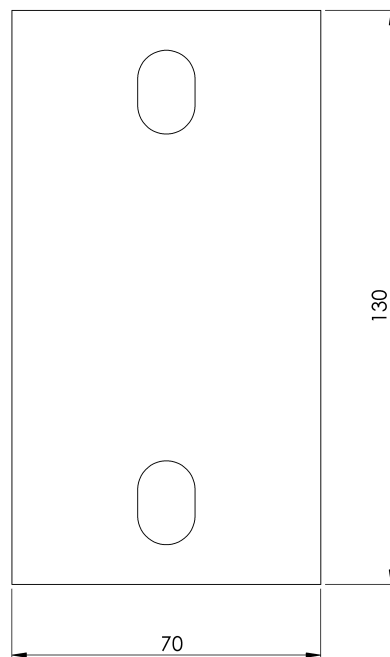
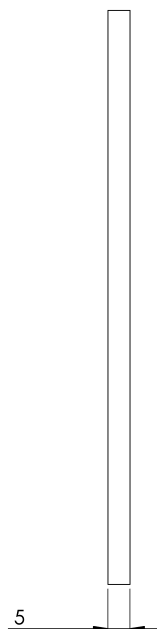
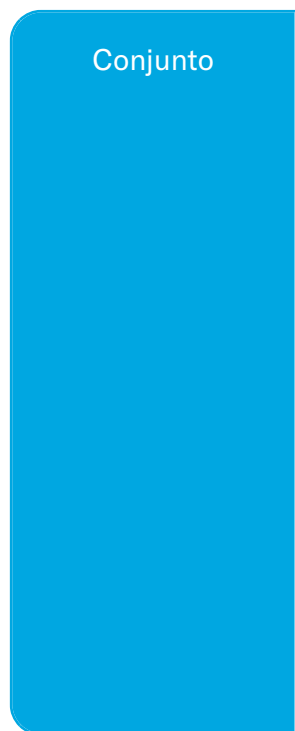
EN 795 Tipo D

CARACTERÍSTICAS

Características generales

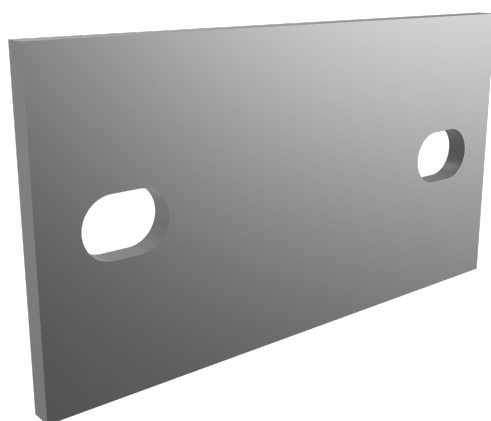
Referencia	201704100011
Material	S 257 JR
Peso	0,35 Kg
Dimensiones	130x70x5 mm

PLANOS



SR PLET SOPTE

Product



Description

- SEKURAIL lifeline component.
- Its main task is to be able to embrace the SR SOPTE on wings below 90mm.

Standard

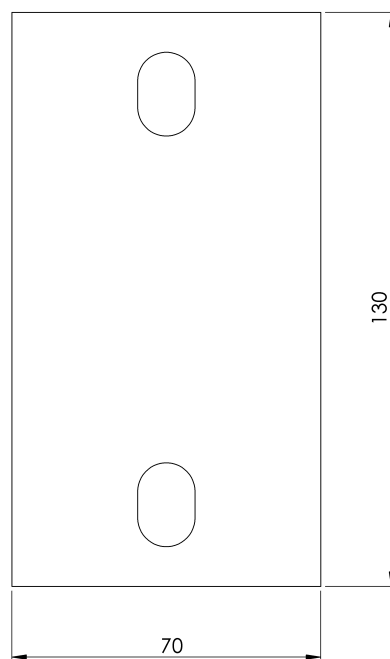
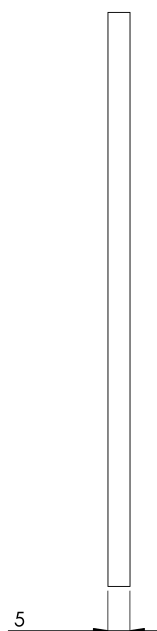
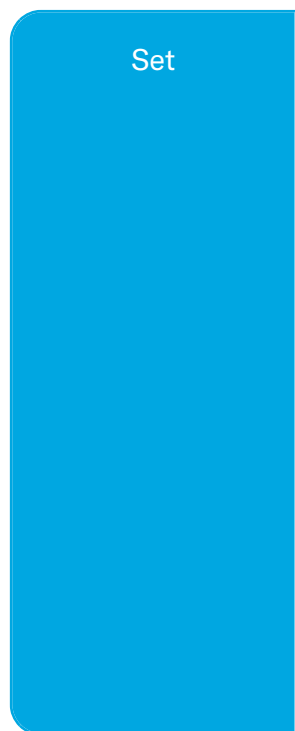
EN 795 Type D

CHARACTERISTICS

General characteristics

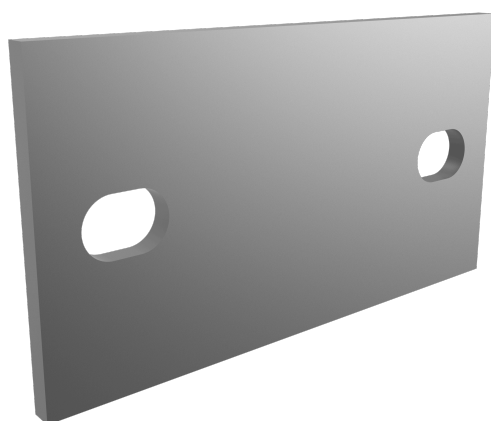
Reference	201704100011
Material	S 257 JR
Weight	0,35 Kg
Dimensions	130x70x5 mm

PLANS



SR PLET SOPTE

Prodotto



Descrizione

- Componente della linea di vita SEKURAIL.
- Il suo compito principale è quello di poter abbracciare il SR SOPTE su ali inferiori a 90 mm.

Standard

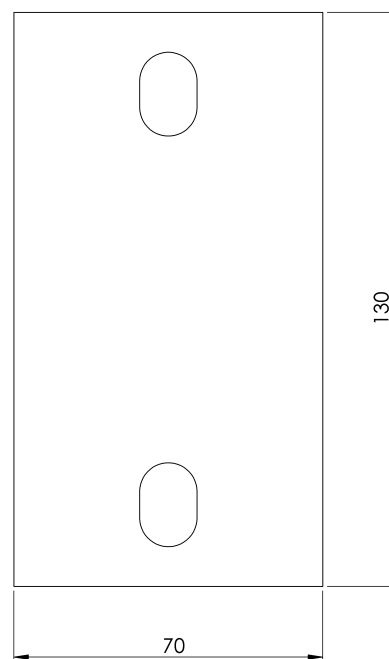
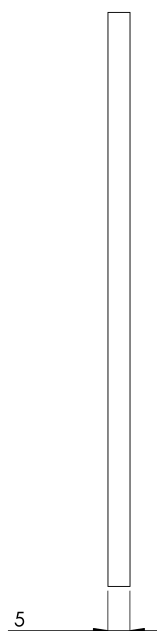
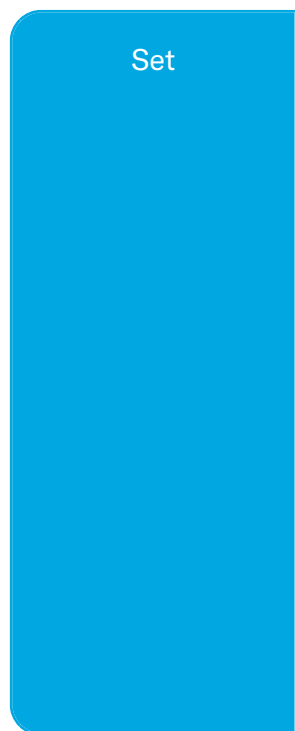
EN 795 Tipo D

CARATTERISTICHE

Caratteristiche generali

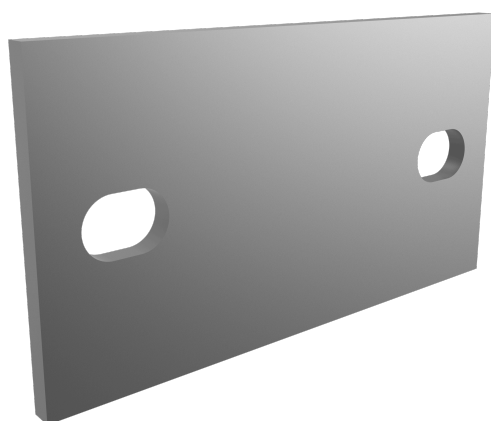
Riferimento	201704100011
Materiale	S 257 JR
Peso	0,35 Kg
Dimensioni	130x70x5 mm

PIANI



SR PLET SOPTE

Produto



Descrição

- Componente da linha de vida SEKURAIL.
- A sua principal tarefa é poder abraçar o SR SOPTE em asas com menos de 90 mm.

Padrão

EN 795 Tipo D

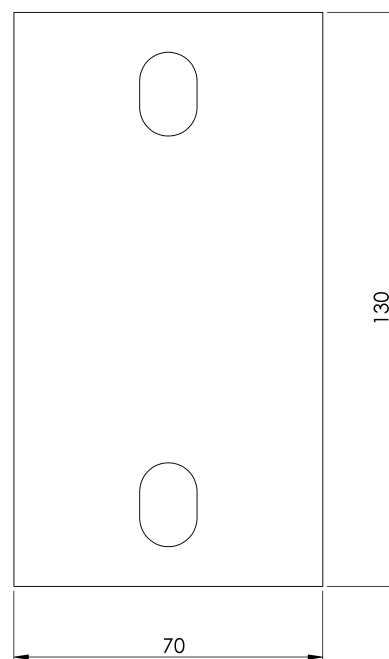
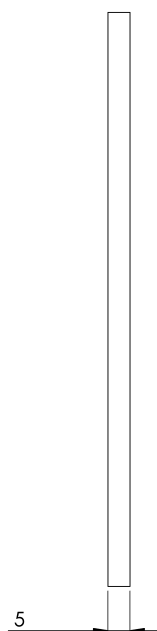
CARACTERÍSTICAS

Caraterísticas gerais

Referência	201704100011
Material	S 257 JR
Peso	0,35 kg
Dimensões	130x70x5 mm

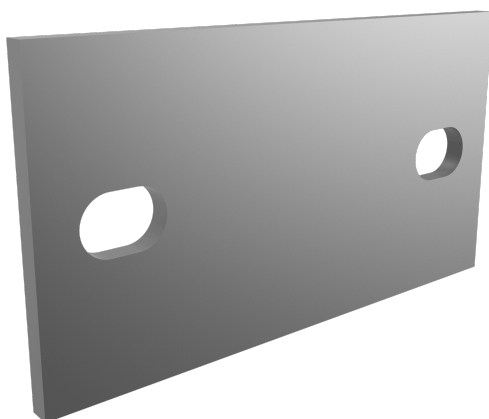
PLANOS

Conjunto



SR PLET SOPTE

Produit



Description

- Composant de la ligne de vie SEKURAIL.
- Sa tâche principale est de pouvoir embrasser la SR SOPTE sur des ailes inférieures à 90 mm.

Standard

EN 795 Type D

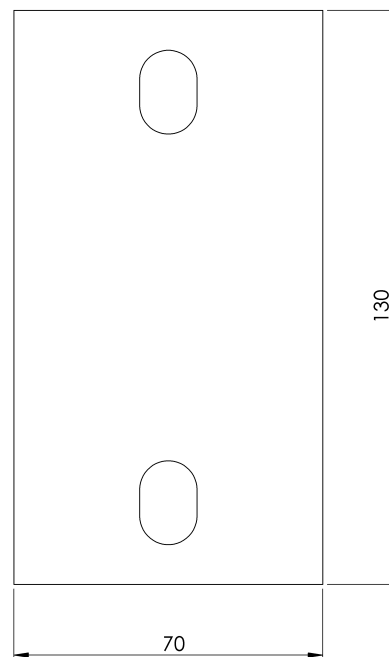
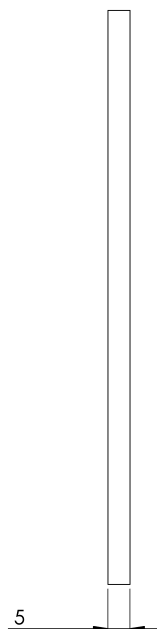
CARACTÉRISTIQUES

Caractéristiques générales

Référence	201704100011
Matériel	S 257 JR
Poids	0,35 Kg
Dimensions	130x70x5 mm

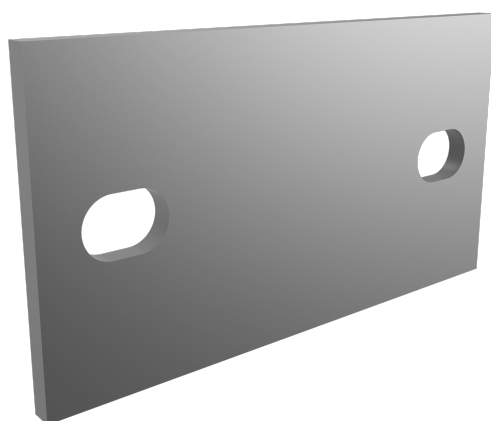
PLANS

Set (jeu de mots)



SR PLET SOPTE

Produkt



Beschreibung

- SEKURAIL-Rettungsseil-Komponente.
- Seine Hauptaufgabe ist es, die SR SOPTE auf Flügeln unter 90 mm zu umarmen.

Standard

EN 795 Typ D

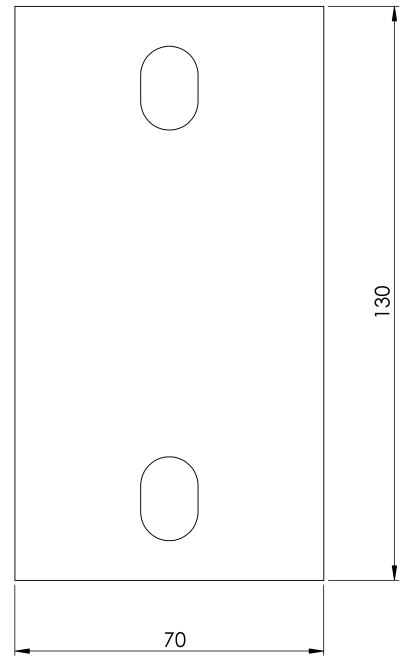
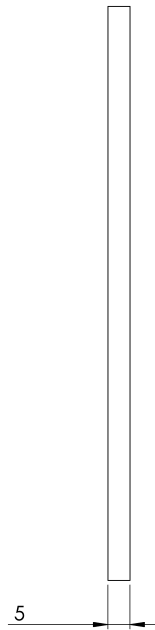
EIGENSCHAFTEN

Allgemeine Merkmale

Referenz	201704100011
Material	S 257 JR
Gewicht	0,35 kg
Abmessungen	130x70x5 mm

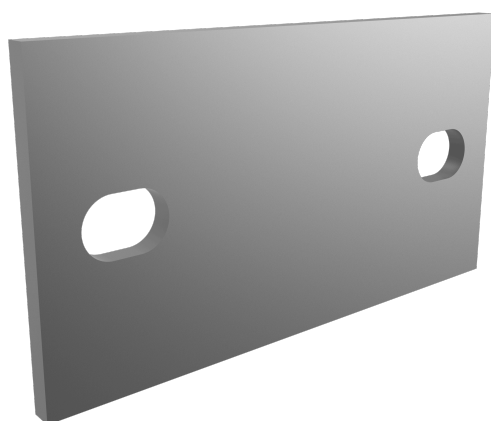
PLANEN

Einstellung



SR PLET SOPTE

Produkt



Opis

- Element linii życia SEKURAIL.
- Jego głównym zadaniem jest możliwość objęcia SR SOPTE na skrzydłach poniżej 90 mm.

Standard

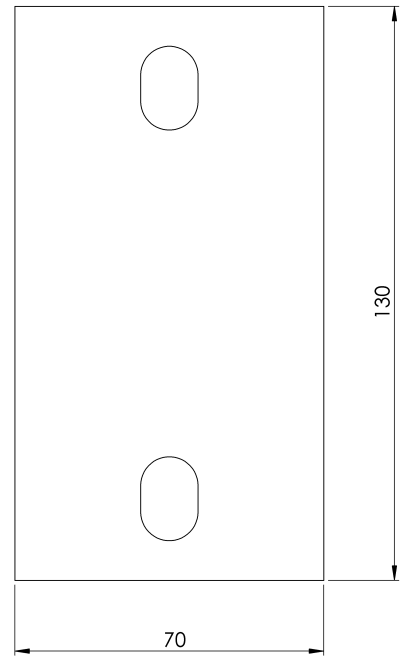
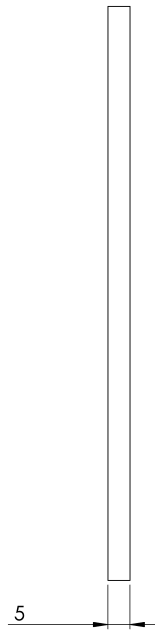
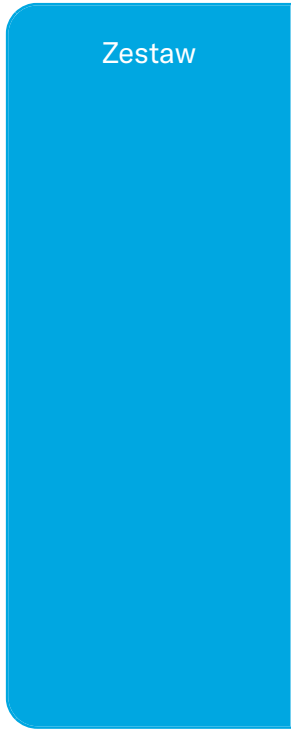
EN 795 Typ D

CHARAKTERYSTYKA

Ogólna
charakterystyka

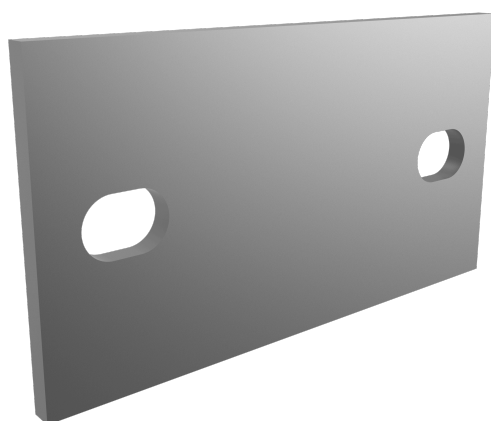
Odniesienie	201704100011
Materiał	S 257 JR
Waga	0,35 kg
Wymiary	130x70x5 mm

PLANY



SR PLET SOPTTE

Termék



Leírás

- SEKURAIL mentőkötél-alkatrész.
- A fő feladata, hogy képes legyen átölelni az SR SOPTTE-t a 90 mm alatti szárnyakon.

Standard

EN 795 D típus

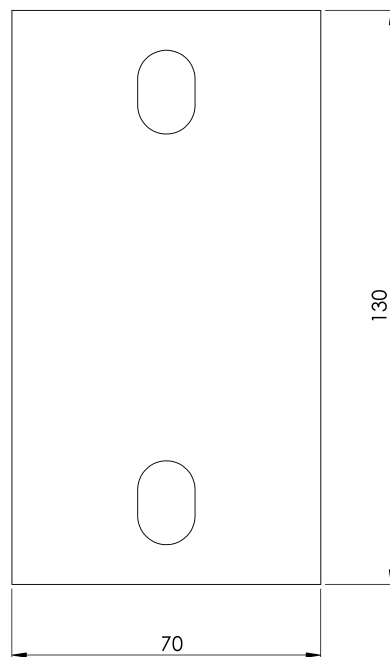
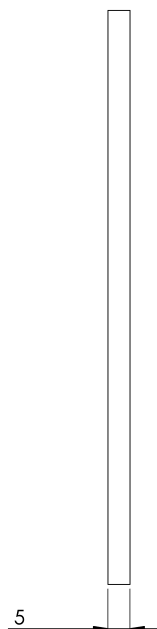
JELLEMZŐK

Általános jellemzők

Hivatkozás	201704100011
Anyag	S 257 JR
Súly	0,35 kg
Méret	130x70x5 mm

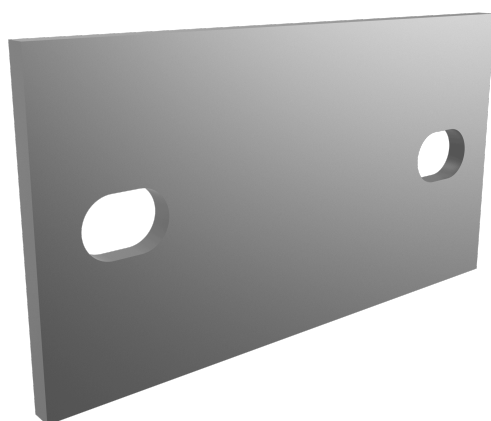
TERVEK

Állítsa be a



SR PLET SOPTE

Produto



Descrição

- Componente de linha de vida SEKURAIL.
- Sua principal tarefa é ser capaz de adotar o SR SOPTE em asas abaixo de 90 mm.

Padrão

EN 795 Tipo D

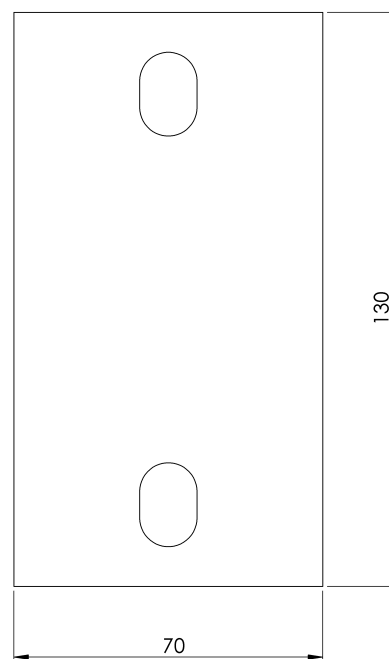
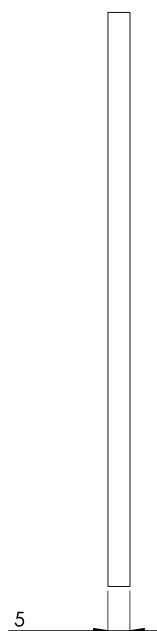
CARACTERÍSTICAS

Características gerais

Referência	201704100011
Material	S 257 JR
Peso	0,35 kg
Dimensões	130x70x5 mm

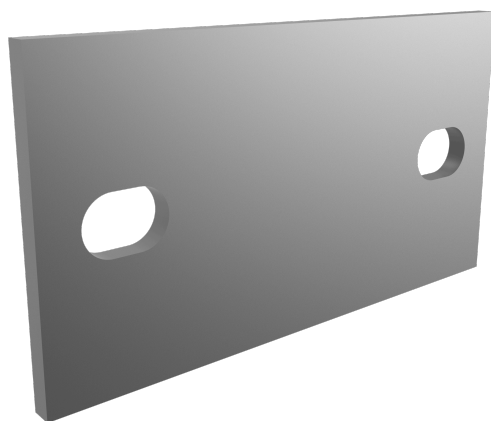
PLANOS

Conjunto



SR PLET SOPTE

Продукт



Описание

- Компонент на спасителната линия SEKURAIL.
- Основната му задача е да може да възприеме SR SOPTE на крила под 90 mm.

Стандартен

EN 795 Тип D

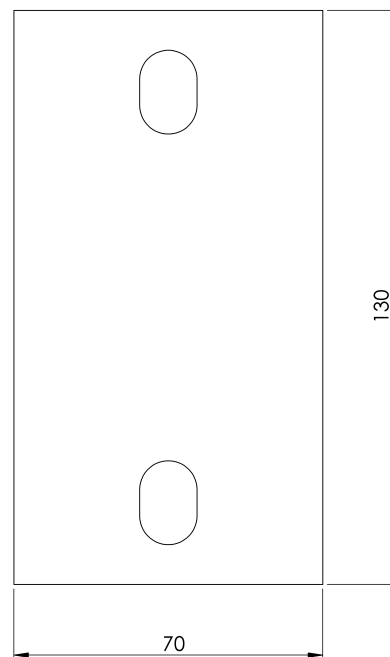
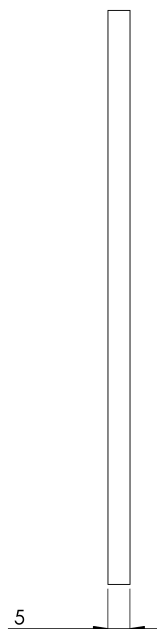
ХАРАКТЕРИСТИКИ

Общи характеристики

Справка	201704100011
Материал	S 257 JR
Тегло	0,35 кг
Размери	130x70x5 мм

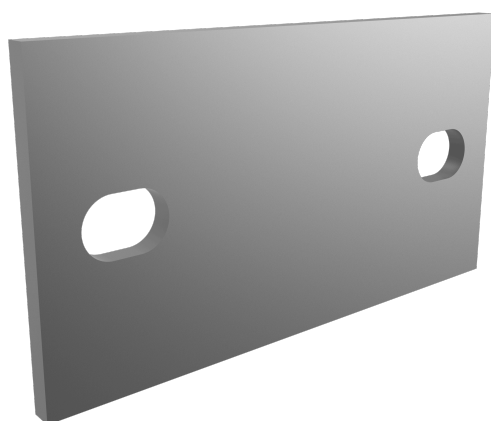
ПЛАНОВЕ

Задайте



SR PLET SOPTTE

Produkt



Beskrivning

- SEKURAIL livlinjekomponent.
- Dess huvuduppgift är att kunna omfamna SR SOPTTE på vingar under 90 mm.

Standard

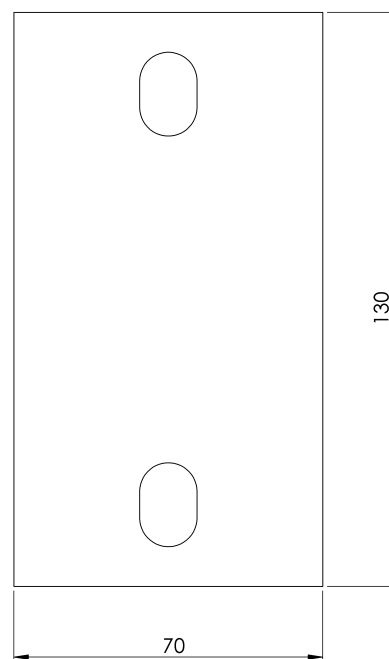
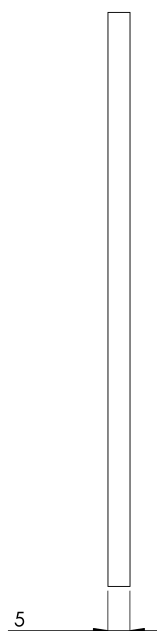
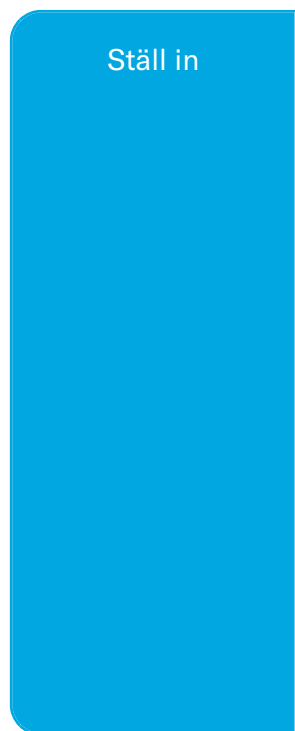
EN 795 Typ D

EGENSKAPER

Allmänna egenskaper

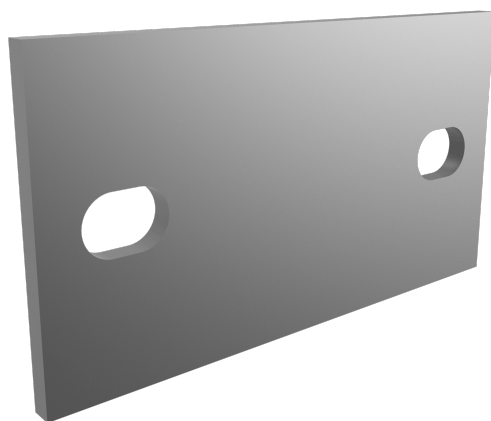
Reference (referens)	201704100011
Material	S 257 JR
Vikt	0,35 kg
Dimensioner	130x70x5 mm

PLANER



SR PLET SOPTE

Produkt



Popis

- Záchranný prvok SEKURAIL.
- Jeho hlavnou úlohou je, aby dokázal obsiahnuť SR SOPTE na krídlach pod 90 mm.

Štandard

EN 795 Typ D

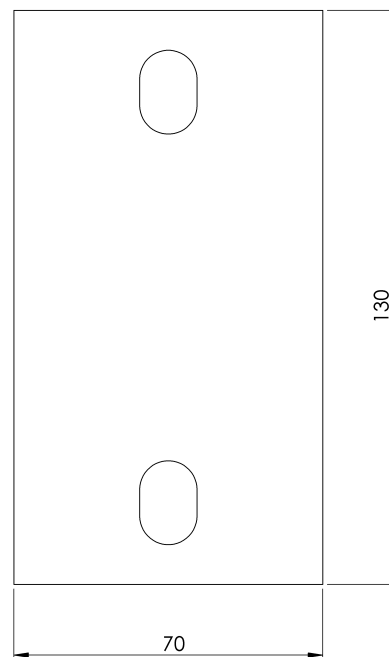
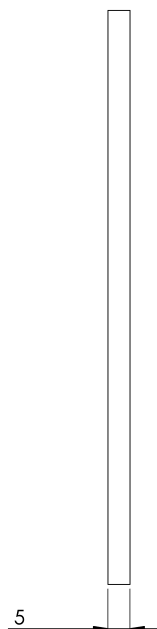
CHARAKTERISTIKA

Všeobecná charakteristika

Referencia	201704100011
Materiál	S 257 JR
Hmotnosť	0,35 kg
Rozmery	130x70x5 mm

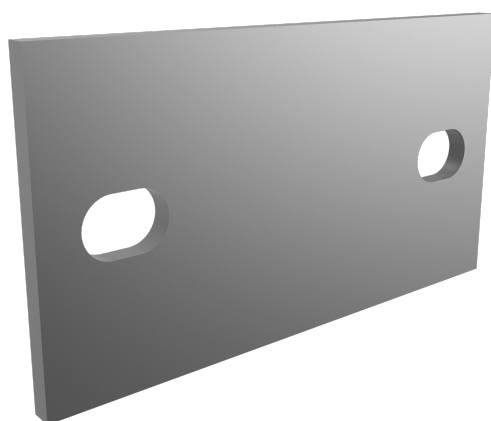
PLÁNY

Nastavenie



SR PLET SOPTE

Produktas



Aprašymas

- SEKURAIL gelbėjimo linijos komponentas.
- Pagrindinė jo užduotis - gebėti priimti SR SOPTE ant mažesnių nei 90 mm skersmens sparnų.

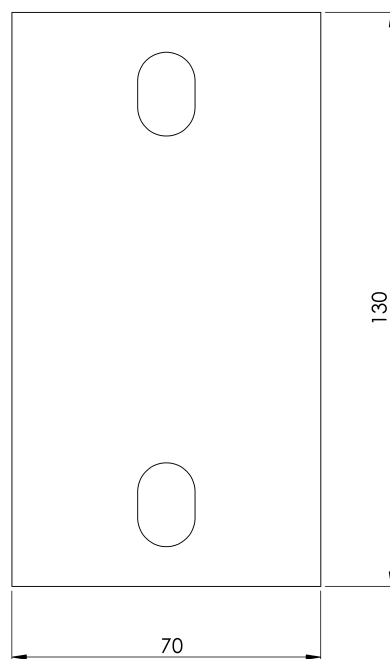
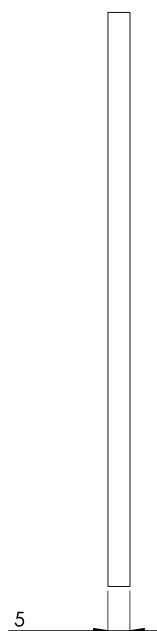
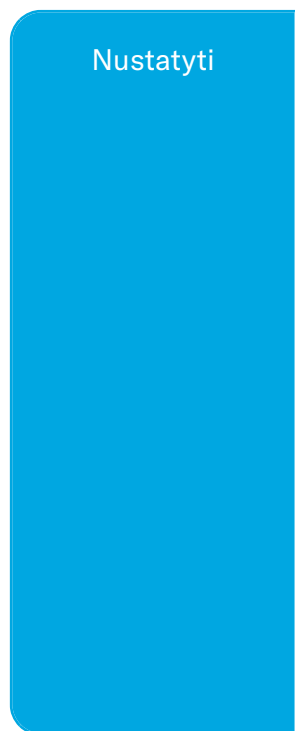
Standartinis

EN 795 D tipas

CHARAKTERISTIKOS

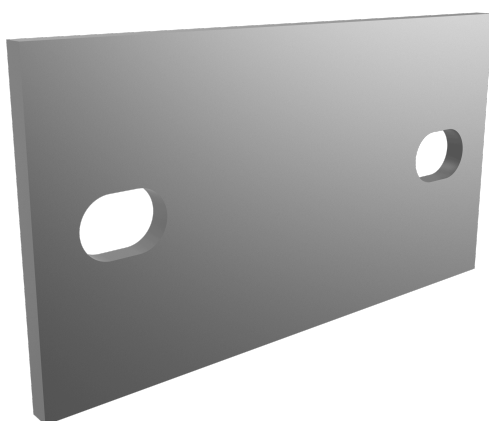
Bendrosios savybės	Nurodymai	201704100011
	Medžiaga	S 257 JR
	Svoris	0,35 kg
	Matmenys	130x70x5 mm

PLANAI



SR PLET SOPTE

Produkt



Beskrivelse

- SEKURAIL livlinekomponent.
- Hovedoppgaven er å kunne omfavne SR SOPTE på vinger under 90 mm.

Standard

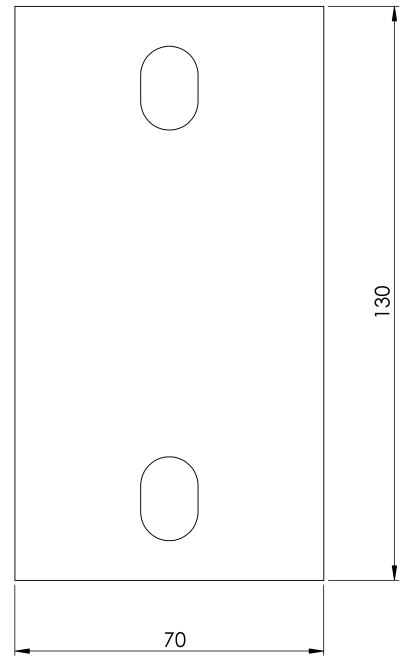
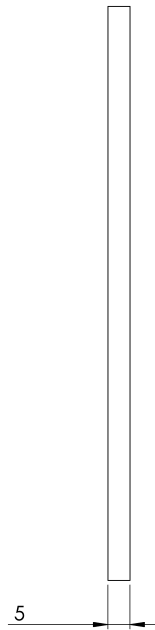
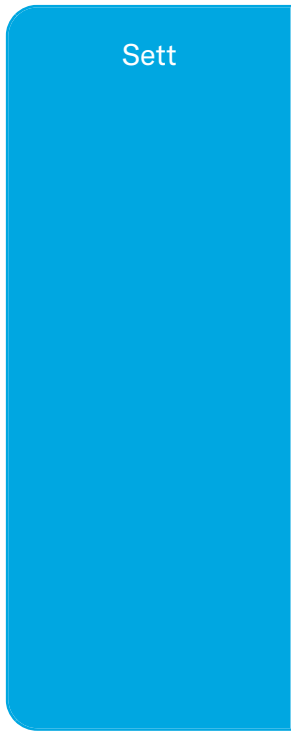
EN 795 Type D

EGENSKAPER

Generelle egenskaper

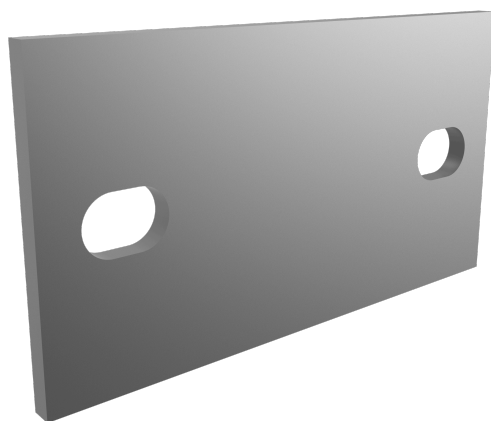
Referanse	201704100011
Materiale	S 257 JR
Vekt	0,35 kg
Dimensjoner	130x70x5 mm

PLANER



SR PLET SOPTE

Produs



Descriere

- Componentă a liniei de viață SEKURAIL.
- Sarcina sa principală este de a putea îmbrățișa SR SOPTE pe aripi sub 90 mm.

Standard

EN 795 Tip D

CARACTERISTICI

Caracteristici generale

Referință	201704100011
Material	S 257 JR
Greutate	0,35 Kg
Dimensiuni	130x70x5 mm

PLANURI

