

**SOPORTE MURO
25CM - ARV
SOPTTE MURO**

ARV SOPTE MURO

FICHA TÉCNICA

Producto



Descripción

- Componente de la línea de vida ALURAIL V.
- Su principal misión es fijar el raíl vertical con escalera a la pared.

Norma

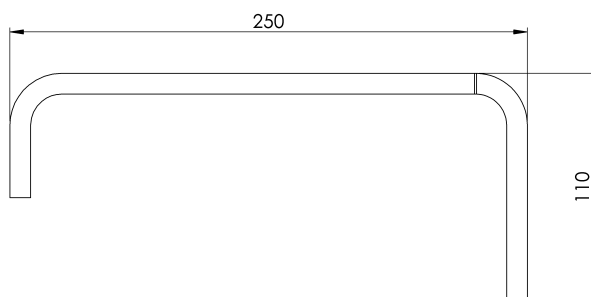
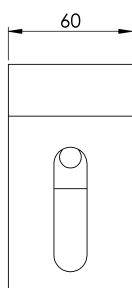
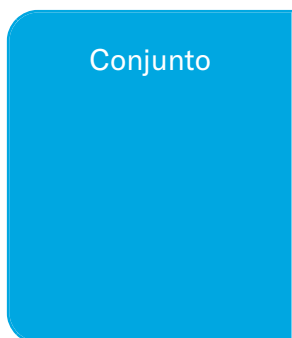
EN 353 - 1

CARACTERÍSTICAS

Características generales

Referencia	203509700027
Material	Acero Inoxidable
Peso	1,30 Kg
Dimensiones	110x250x60 mm

PLANOS



ARV SOPTE MURO

Product



Description

- Lifeline component ALURAIL V.
- Its main task is to fix the vertical rail with ladder to the wall.

Standard

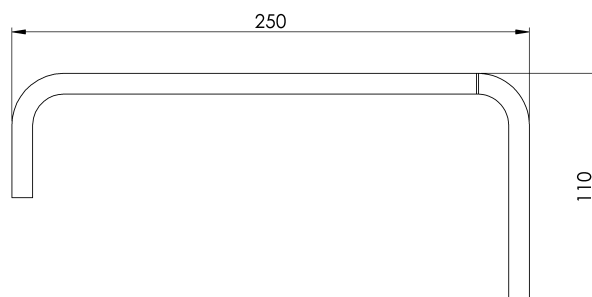
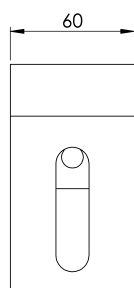
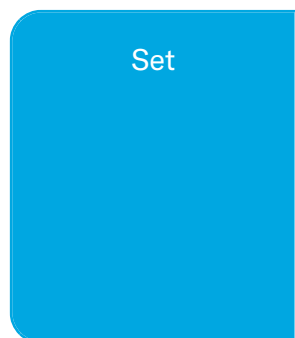
EN 353 - 1

CHARACTERISTICS

General characteristics

Reference	203509700027
Material	Stainless Steel
Weight	1,30 Kg
Dimensions	110x250x60 mm

PLANS



ARV SOPTE MURO

Prodotto



Descrizione

- Componente della linea di vita ALURAIL V.
- Il suo compito principale è quello di fissare alla parete la guida verticale con la scala.

Standard

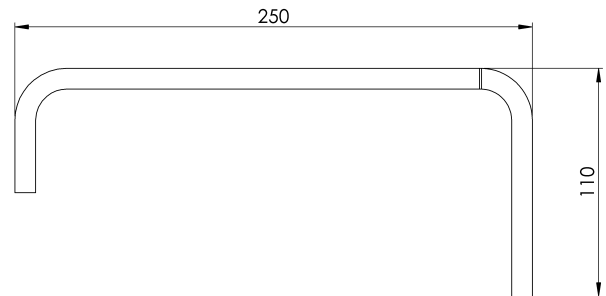
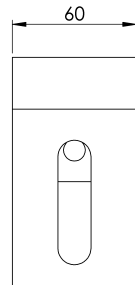
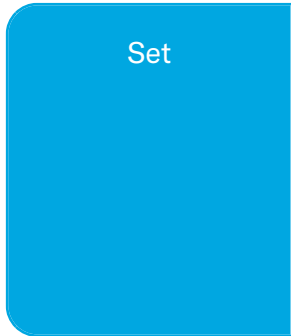
IT 353 - 1

CARATTERISTICHE

Caratteristiche generali

Riferimento	203509700027
Materiale	Acciaio inox
Peso	1,30 Kg
Dimensioni	110x250x60 mm

PIANI



ARV SOPTE MURO

Produto



Descrição

- Componente da linha de vida ALURAIL V.
- A sua principal função é fixar a calha vertical com escada à parede.

Padrão

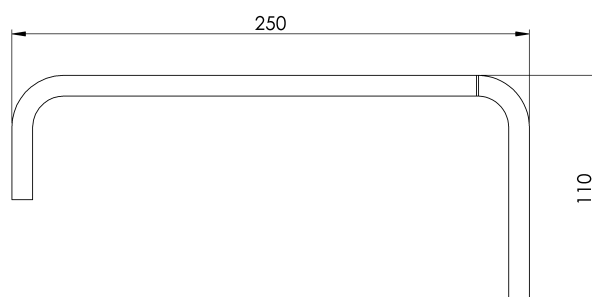
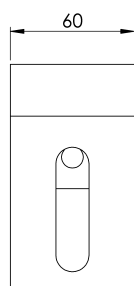
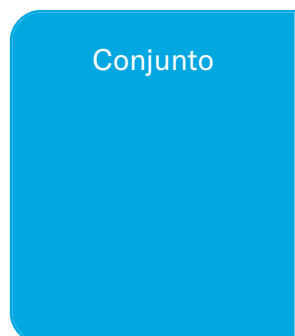
PT 353 - 1

CARACTERÍSTICAS

Caraterísticas gerais

Referência	203509700027
Material	Aço inoxidável
Peso	1,30 kg
Dimensões	110x250x60 mm

PLANOS



ARV SOPTE MURO

Produit



Description

- Composant de la ligne de vie ALURAIL V.
- Sa tâche principale est de fixer le rail vertical avec l'échelle au mur.

Standard

EN 353 - 1

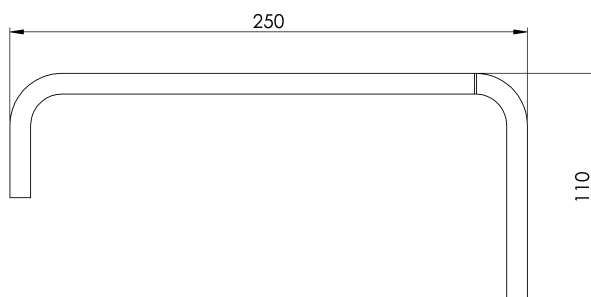
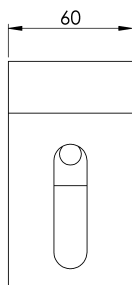
CARACTÉRISTIQUES

Caractéristiques générales

Référence	203509700027
Matériel	Acier inoxydable
Poids	1,30 Kg
Dimensions	110x250x60 mm

PLANS

Set (jeu de mots)



ARV SOPTE MURO

Produkt



Beschreibung

- Lifeline-Bauteil ALURAIL V.
- Seine Hauptaufgabe besteht darin, die vertikale Schiene mit der Leiter an der Wand zu befestigen.

Standard

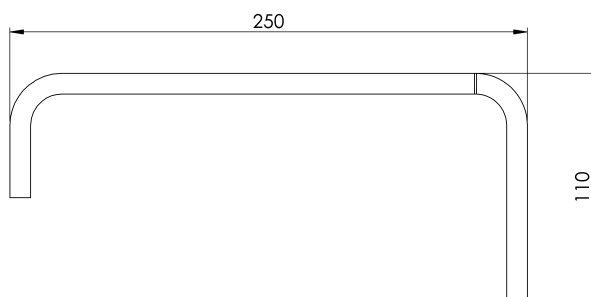
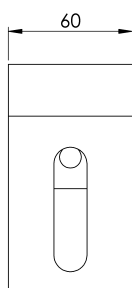
DE 353 - 1

EIGENSCHAFTEN

Allgemeine Merkmale

Referenz	203509700027
Material	Rostfreier Stahl
Gewicht	1,30 kg
Abmessungen	110x250x60 mm

PLANEN



ARV SOPTE MURO

Produkt



Opis

- Element linii życia ALURAIL V.
- Jego głównym zadaniem jest przymocowanie pionowej szyny z drabiną do ściany.

Standard

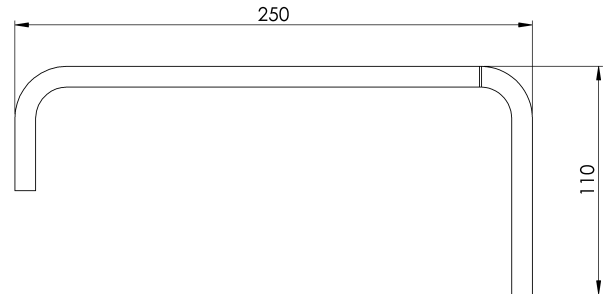
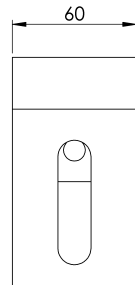
PL 353 - 1

CHARAKTERYSTYKA

Ogólna charakterystyka

Odniesienie	203509700027
Materiał	Stal nierdzewna
Waga	1,30 kg
Wymiary	110x250x60 mm

PLANY



ARV SÓPORTE MURO

Termék



Leírás

- Életvonal-összetevő ALURAIL V.
- Fő feladata, hogy a létrával ellátott függőleges sánt a falhoz rögzítse.

Standard

HU 353 - 1

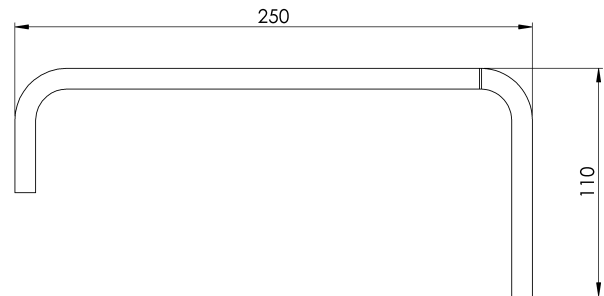
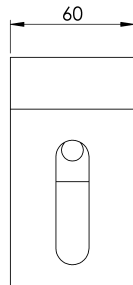
JELLEMZŐK

Általános jellemzők

Hivatkozás	203509700027
Anyag	Rozsdamentes acél
Súly	1,30 kg
Méreték	110x250x60 mm

TERVEK

Állítsa be a



ARV SOPTE MURO

Produto



Descrição

- Componente de linha de vida ALURAIL V.
- Sua principal tarefa é fixar o trilho vertical com escada na parede.

Padrão

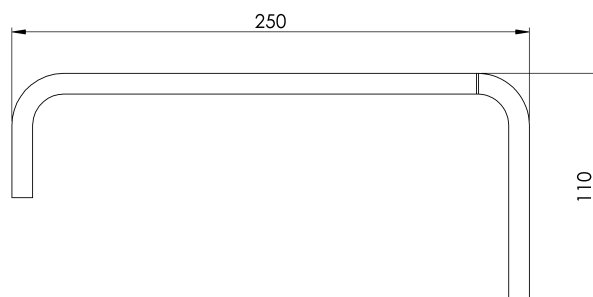
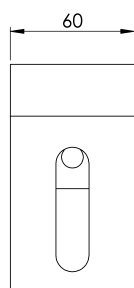
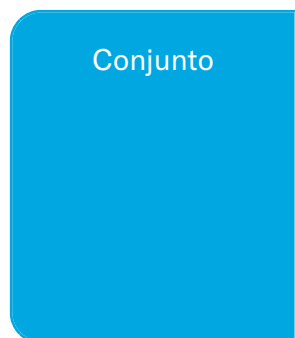
EN 353 - 1

CARACTERÍSTICAS

Características gerais

Referência	203509700027
Material	Aço inoxidável
Peso	1,30 kg
Dimensões	110x250x60 mm

PLANOS



ARV SOPTE MURO

Продукт



Описание

- Компонент на спасителната линия ALURAIL V.
- Основната му задача е да закрепя вертикалната шина със стълба към стената.

Стандартен

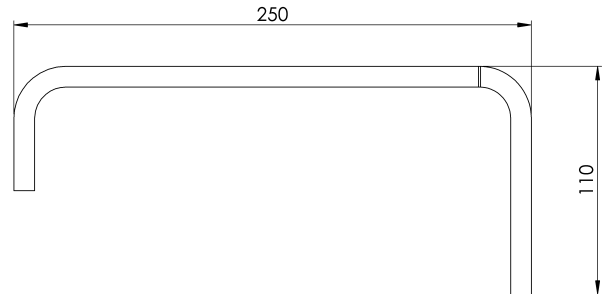
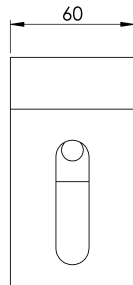
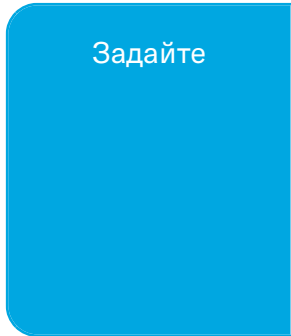
BG 353 - 1

ХАРАКТЕРИСТИКИ

Общи характеристики

Справка	203509700027
Материал	Неръждаема стомана
Тегло	1,30 кг
Размери	110x250x60 мм

ПЛАНОВЕ



ARV SOPTE MURO

Produkt



Beskrivning

- Livlinjekomponent ALURAIL V.
- Dess huvuduppgift är att fästa den vertikala skenan med stege på väggen.

Standard

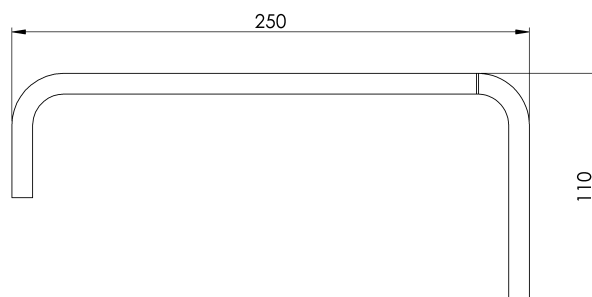
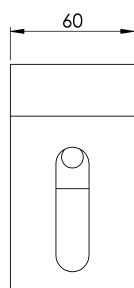
SV 353 - 1

EGENSKAPER

Allmänna egenskaper

Reference (referens)	203509700027
Material	Rostfritt stål
Vikt	1,30 kg
Dimensioner	110x250x60 mm

PLANER



ARV SOPTE MURO

Produkt



Popis

- Záchranný komponent ALURAIL V.
- Jeho hlavnou úlohou je upevniť zvislú lištu s rebríkom na stenu.

Štandard

SK 353 - 1

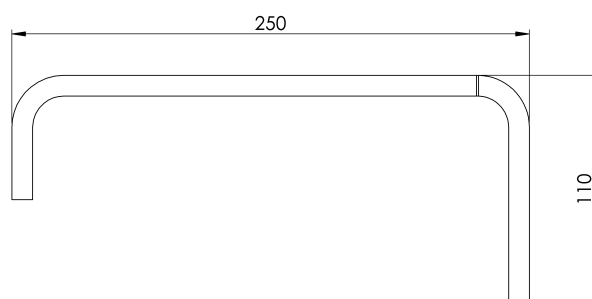
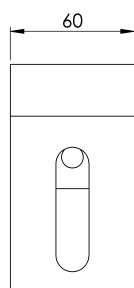
CHARAKTERISTIKA

Všeobecná charakteristika

Referencia	203509700027
Materiál	Nerezová oceľ
Hmotnosť	1,30 kg
Rozmery	110x250x60 mm

PLÁNY

Nastavenie



ARV SOPTE MURO

Produktas



Aprašymas

- Gyvybinės linijos komponentas ALURAIL V.
- Pagrindinė jo užduotis - pritvirtinti vertikalųjį bėgį su kopėčiomis prie sienos.

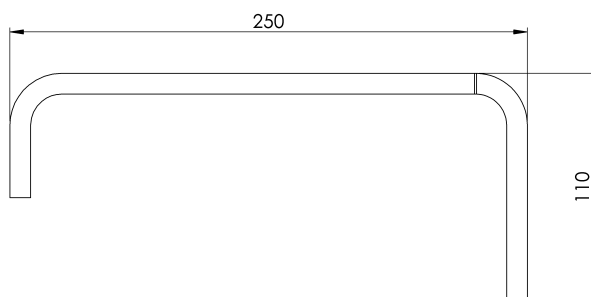
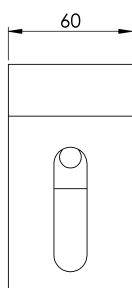
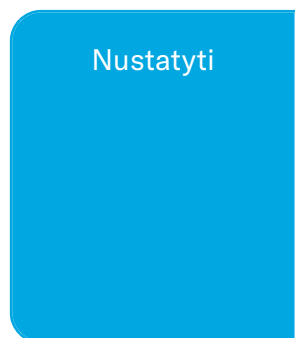
Standartinis

LT 353 - 1

CHARAKTERISTIKOS

Bendrosios savybės	Nurodymai	203509700027
	Medžiaga	Nerūdijantis plienas
	Svoris	1,30 kg
	Matmenys	110x250x60 mm

PLANAI



ARV SOPTE MURO

Produkt



Beskrivelse

- Lifeline-komponent ALURAIL V.
- Hovedoppgaven er å feste den vertikale skinnen med stige til veggen.

Standard

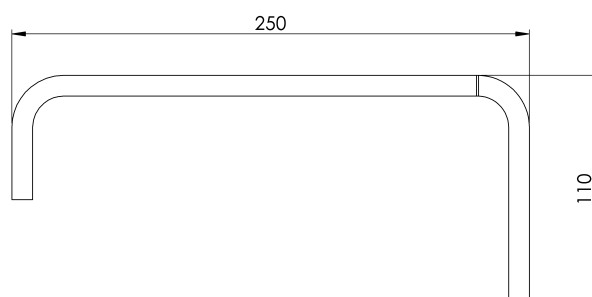
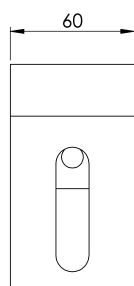
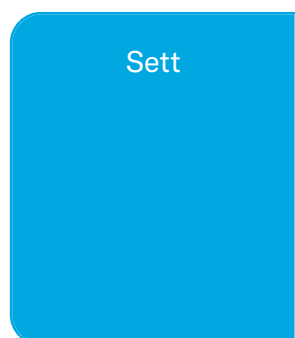
EN 353 - 1

EGENSKAPER

Generelle egenskaper

Referanse	203509700027
Materiale	Rustfritt stål
Vekt	1,30 kg
Dimensjoner	110x250x60 mm

PLANER



ARV SOPTE MURO

Produs



Descriere

- Componentă de linie de viață ALURAIL V.
- Sarcina sa principală este de a fixa șina verticală cu scară la perete.

Standard

RO 353 - 1

CARACTERISTICI

Caracteristici generale

Referință	203509700027
Material	Oțel inoxidabil
Greutate	1,30 Kg
Dimensiuni	110x250x60 mm

PLANURI

