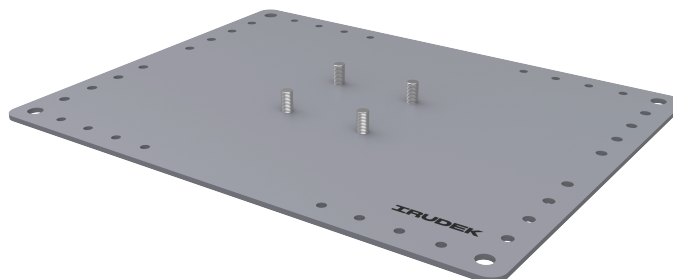


# PLACA INFERIOR 333x250 – CH PLAC INF

# CH PLAC INF

FICHA TÉCNICA

## Producto



## Descripción

- Componente de la línea de vida CHECKLINE II
- Su principal misión es fijar la línea de vida a la cubierta y ser sustentos para los postes.
- Se fijaran mediante roscachapas.

## Norma

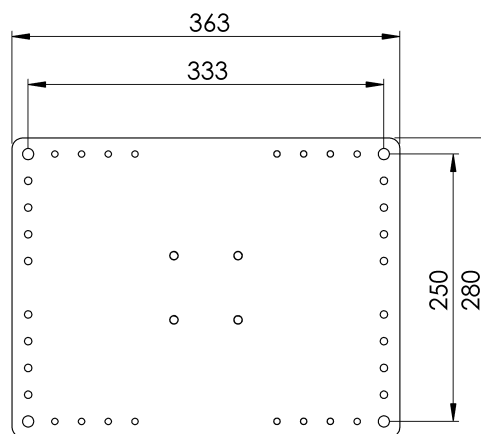
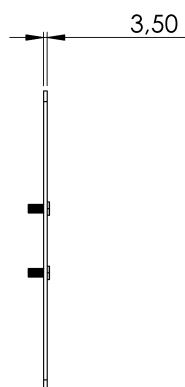
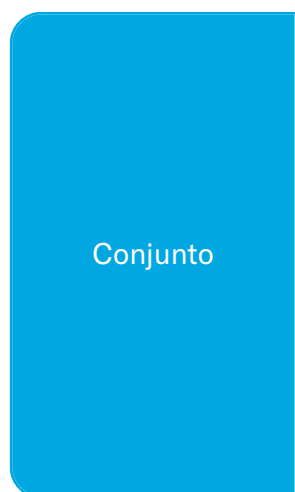
EN 795 Tipo A y C

## CARACTERÍSTICAS

### Características generales

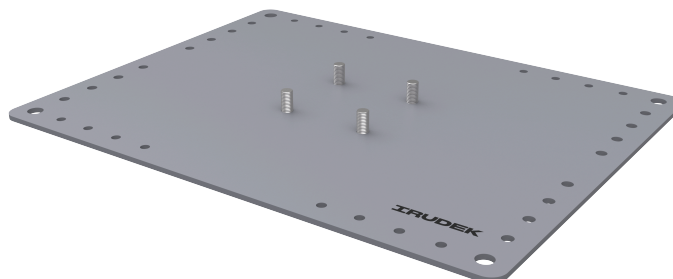
Referencia	200701500011
Material	Acero Galvanizado
Peso	2,35 kg
Dimensiones	20x280x363 mm

# PLANOS



# CH PLAC INF

## Product



## Description

- Lifeline component CHECKLINE II
- Their main task is to fix the lifeline to the deck and to support the poles.
- They shall be fixed by means of screw plugs.

## Standard

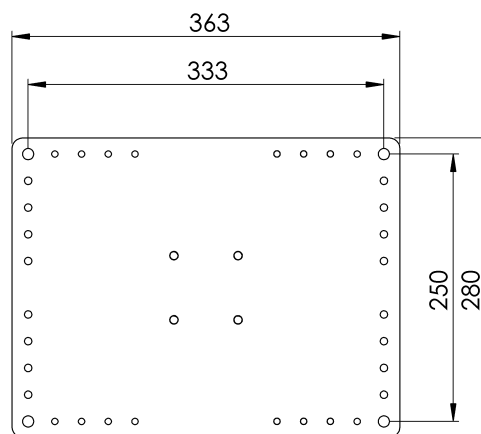
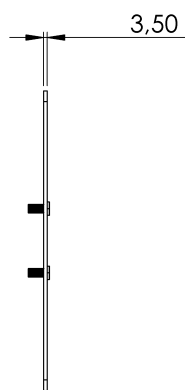
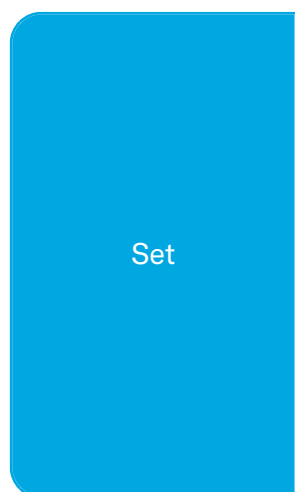
EN 795 Type A and C

# CHARACTERISTICS

## General characteristics

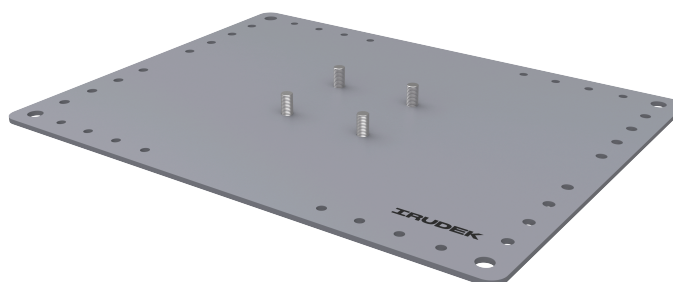
Reference	200701500011
Material	Galvanised steel
Weight	2,35 kg
Dimensions	20x280x363 mm

# PLANS



# CH PLAC INF

Prodotto



Descrizione

- Componente della linea di vita CHECKLINE II
- Il loro compito principale è quello di fissare la linea di vita alla coperta e di sostenere i pali.
- Il fissaggio deve avvenire mediante tappi a vite.

Standard

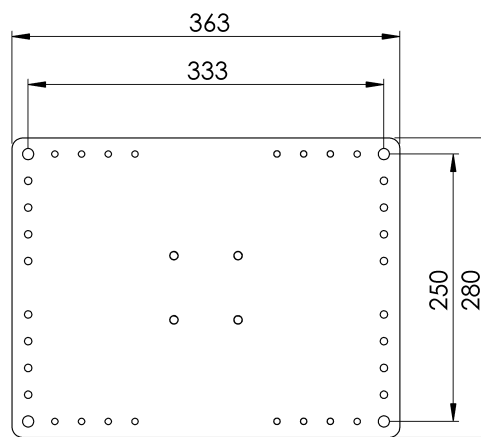
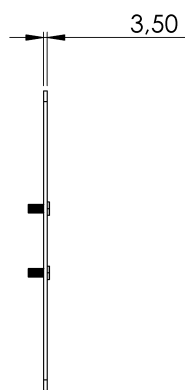
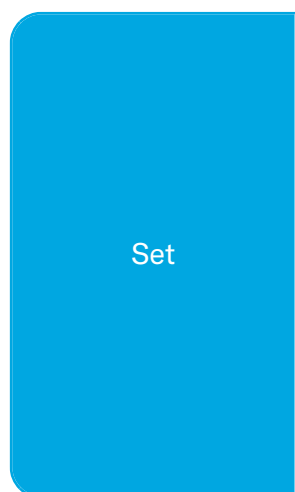
EN 795 Tipo A e C

## CARATTERISTICHE

Caratteristiche generali

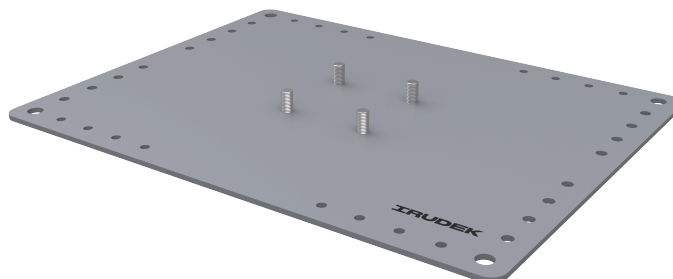
Riferimento	200701500011
Materiale	Acciaio zincato
Peso	2,35 kg
Dimensioni	20x280x363 mm

# PIANI



# CH PLAC INF

Produto



Descrição

- Componente da linha de vida CHECKLINE II
- A sua principal tarefa é fixar a linha de vida ao convés e apoiar os postes.
- A sua fixação deve ser efectuada por meio de parafusos de obturação.

Padrão

EN 795 Tipo A e C

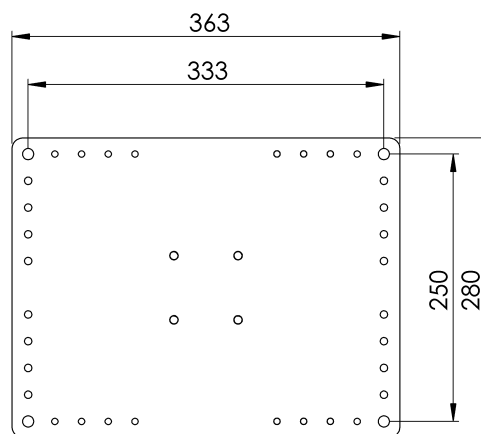
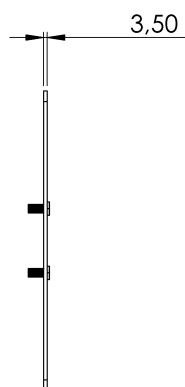
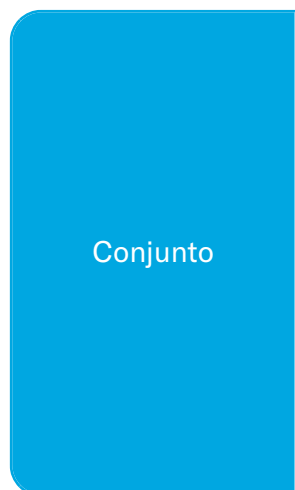
## CARACTERÍSTICAS

Caraterísticas gerais

Referência	200701500011
Material	Aço galvanizado
Peso	2,35 kg
Dimensões	20x280x363 mm

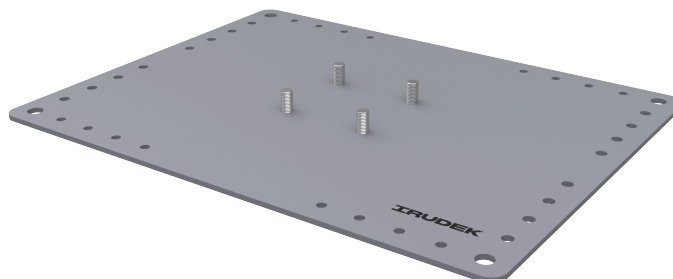


# PLANOS



# CH PLAC INF

Produit



Description

- Composant de la ligne de vie CHECKLINE II
- Leur tâche principale est de fixer la ligne de vie au pont et de soutenir les poteaux.
- Ils sont fixés au moyen de bouchons à vis.

Standard

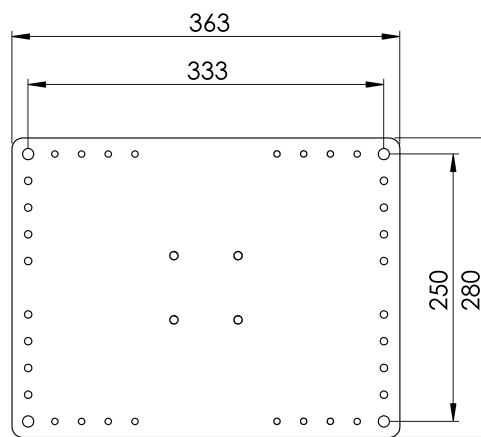
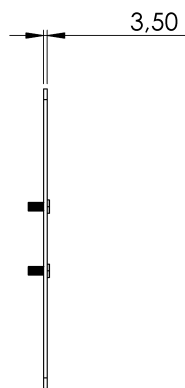
EN 795 Type A et C

## CARACTÉRISTIQUES

Caractéristiques  
générales

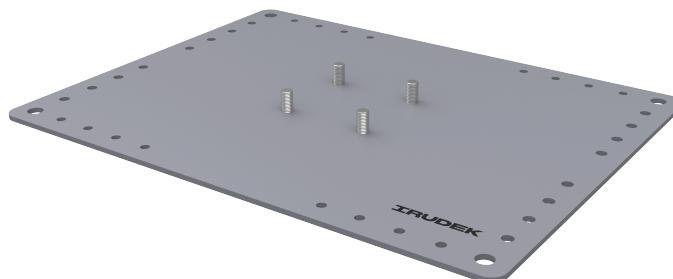
Référence	200701500011
Matériel	Acier galvanisé
Poids	2,35 kg
Dimensions	20x280x363 mm

# PLANS



# CH PLAC INF

## Produkt



## Beschreibung

- Lifeline-Bauteil CHECKLINE II
- Ihre Hauptaufgabe besteht darin, die Rettungsleine an Deck zu befestigen und die Masten zu stützen.
- Sie sind mit Verschlusschrauben zu befestigen.

## Standard

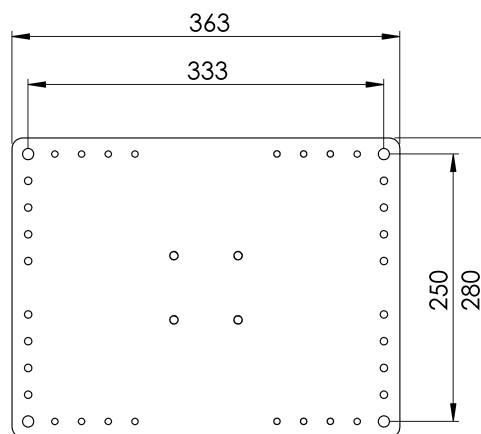
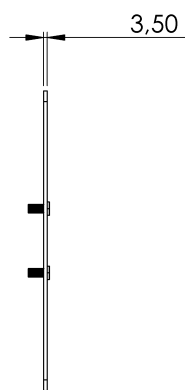
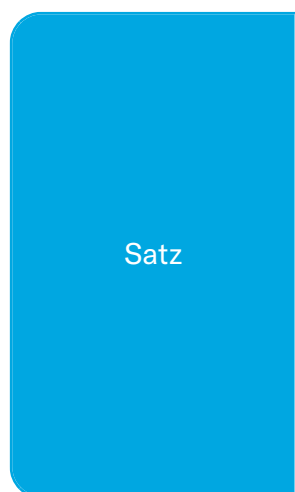
EN 795 Typ A und C

# EIGENSCHAFTEN

## Allgemeine Merkmale

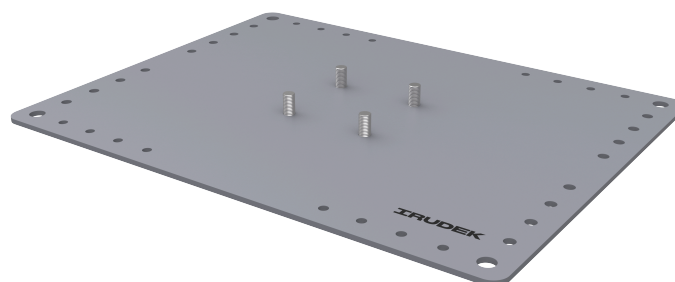
Referenz	200701500011
Material	Verzinkter Stahl
Gewicht	2,35 kg
Abmessungen	20x280x363 mm

# PLANEN



# CH PLAC INF

Produkt



Opis

- Element linii życia CHECKLINE II
- Ich głównym zadaniem jest mocowanie liny ratunkowej do pokładu i podtrzymywanie masztów.
- Powinny one być mocowane za pomocą zaślepek śrubowych.

Standard

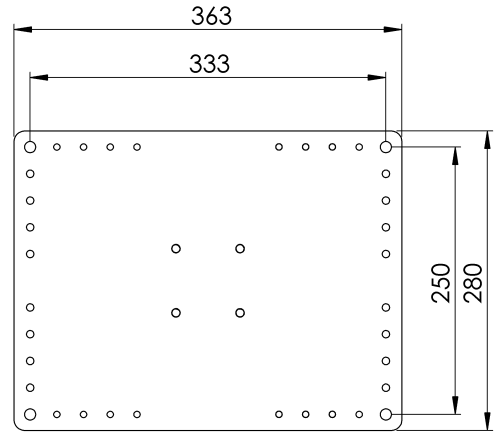
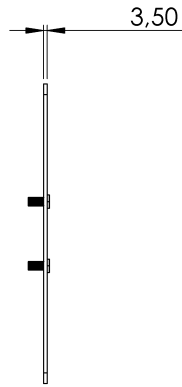
EN 795 Typ A i C

## CHARAKTERYSTYKA

Ogólna charakterystyka

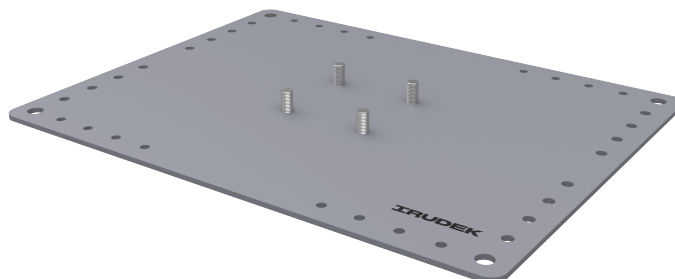
Odniesienie	200701500011
Materiał	Stal ocynkowana
Waga	2,35 kg
Wymiary	20x280x363 mm

# PLANY



# CH PLAC INF

## Termék



## Leírás

- Mentővonal komponens CHECKLINE II
- Fő feladatuk a mentőkötél rögzítése a fedélzethez és a rudak alátámasztása.
- Ezeket csavaros dugókkal kell rögzíteni.

## Standard

EN 795 A és C típus

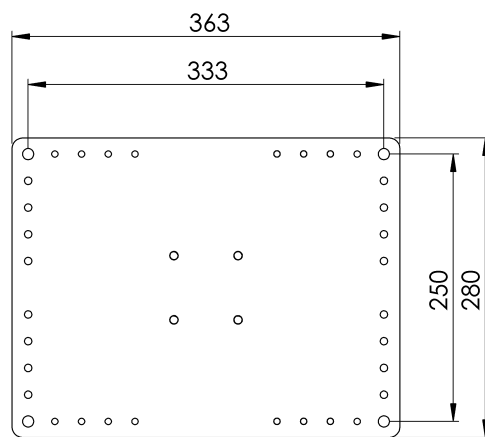
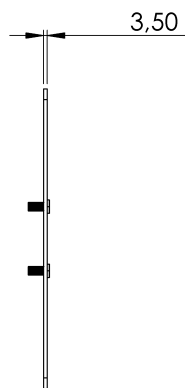
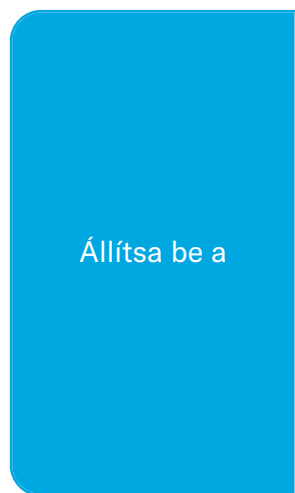
## JELLEMZŐK

### Általános jellemzők

Hivatkozás	200701500011
Anyag	Horganyzott acél
Súly	2,35 kg
Méretetek	20x280x363 mm

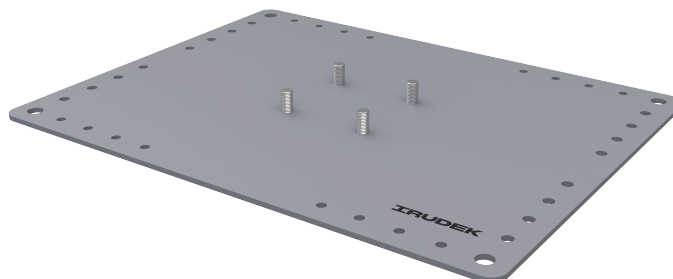


## TERVEK



# CH PLAC INF

Produto



Descrição

- Componente da linha de vida CHECKLINE II
- Sua principal tarefa é fixar a linha de vida no convés e apoiar os postes.
- Eles devem ser fixados por meio de bujões de rosca.

Padrão

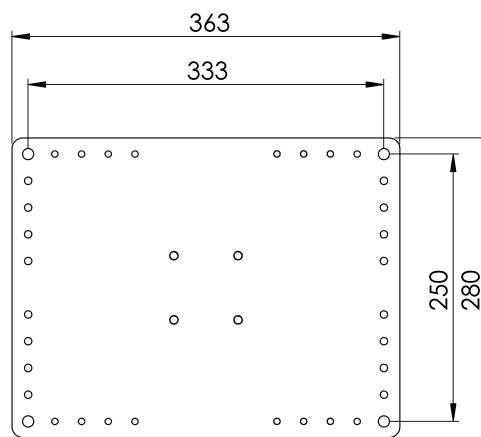
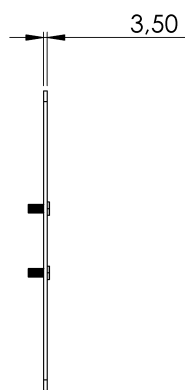
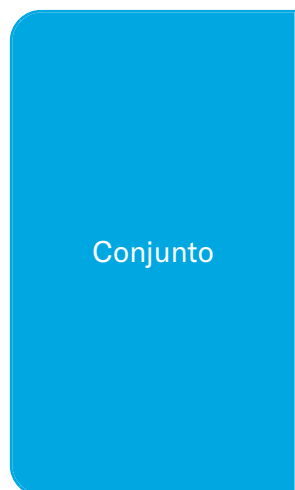
EN 795 Tipo A e C

## CARACTERÍSTICAS

Características gerais

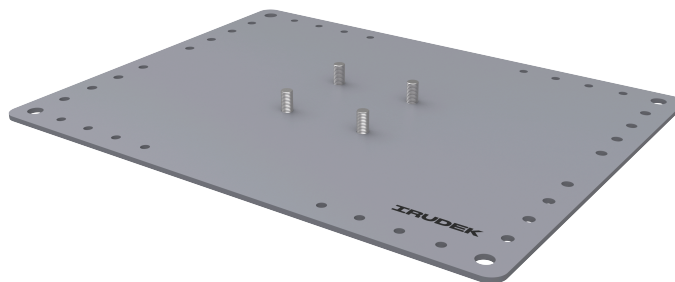
Referência	200701500011
Material	Aço galvanizado
Peso	2,35 kg
Dimensões	20x280x363 mm

# PLANOS



# CH PLAC INF

## Продукт



## Описание

- Компонент на спасителната линия CHECKLINE II
- Основната им задача е да закрепят спасителното въже към палубата и да поддържат стълбовете.
- Те се закрепват с помощта на винтови тапи.

## Стандартен

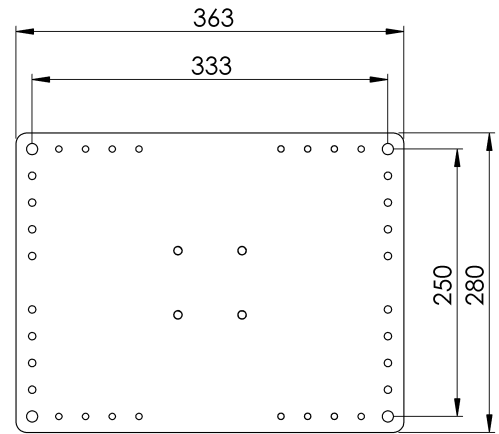
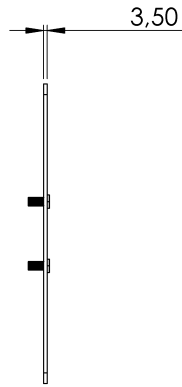
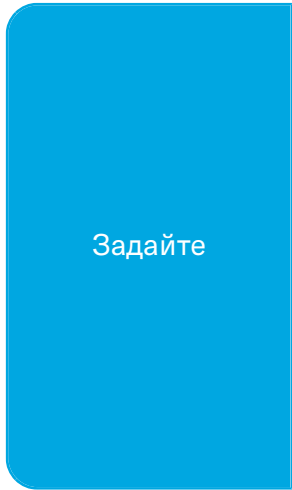
EN 795 Тип А и С

## ХАРАКТЕРИСТИКИ

### Общи характеристики

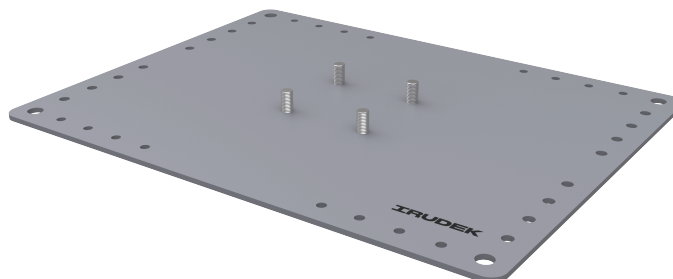
Справка	200701500011
Материал	Поцинкована стомана
Тегло	2,35 кг
Размери	20x280x363 мм

# ПЛАНОВЕ



# CH PLAC INF

## Produkt



## Beskrivning

- Lifeline-komponent CHECKLINE II
- Deras huvuduppgift är att fästa livlinan i däcket och att stödja stolparna.
- De skall fästas med hjälp av skruvpluggar.

## Standard

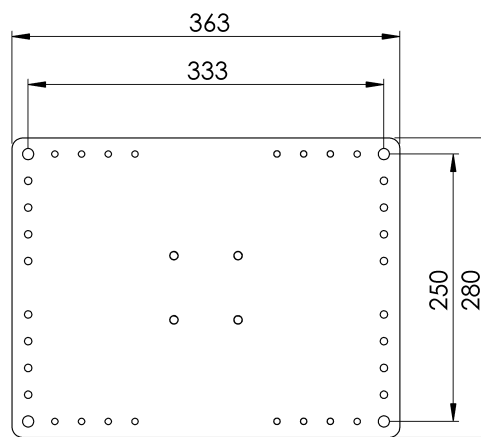
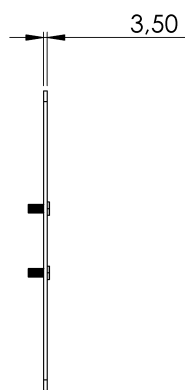
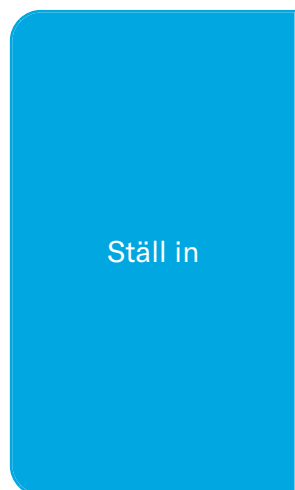
EN 795 Typ A och C

# EGENSKAPER

## Allmänna egenskaper

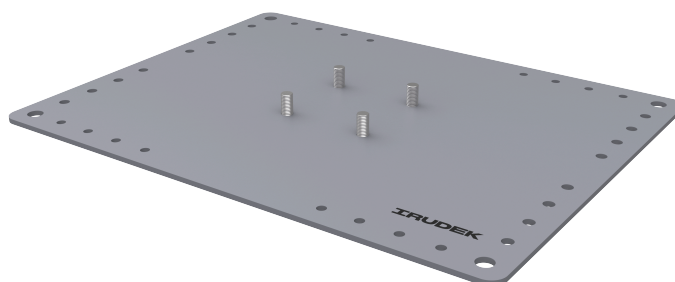
Reference (referens)	200701500011
Material	Galvaniserat stål
Vikt	2,35 kg
Dimensioner	20x280x363 mm

# PLANER



# CH PLAC INF

## Produkt



## Popis

- Komponent záchrannéj línie CHECKLINE II
- Ich hlavnou úlohou je pripevniť záchranné lano k palube a podprieť tyče.
- Upevňujú sa pomocou skrutkových zátok.

## Štandard

EN 795 Typ A a C

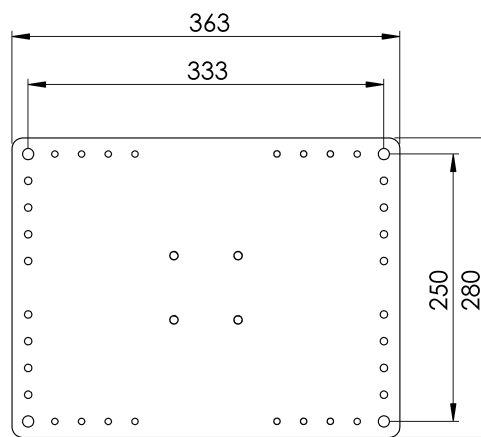
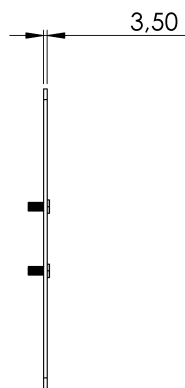
# CHARAKTERISTIKA

## Všeobecná charakteristika

Referencia	200701500011
Materiál	Pozinkovaná oceľ
Hmotnosť	2,35 kg
Rozmery	20x280x363 mm

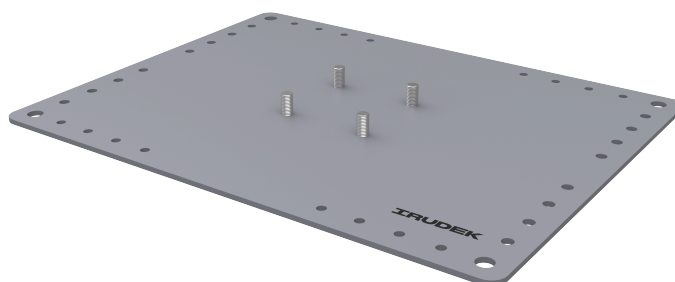


# PLÁNY



# CH PLAC INF

## Produktas



## Aprašymas

- Gelbėjimo linijos komponentas CHECKLINE II
- Pagrindinė jų užduotis - pritvirtinti gelbėjimo virvę prie denio ir paremti stulpus.
- Jie tvirtinami varžtiniais kamščiais.

## Standartinis

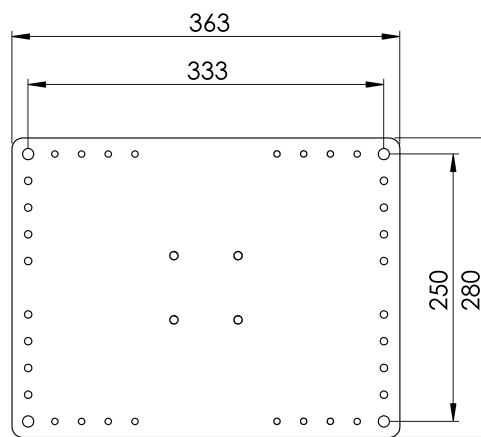
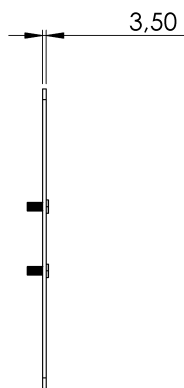
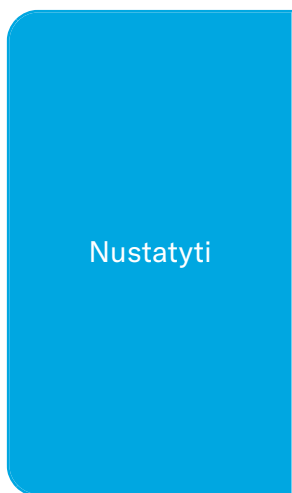
EN 795 A ir C tipai

# CHARAKTERISTIKOS

## Bendrosios savybės

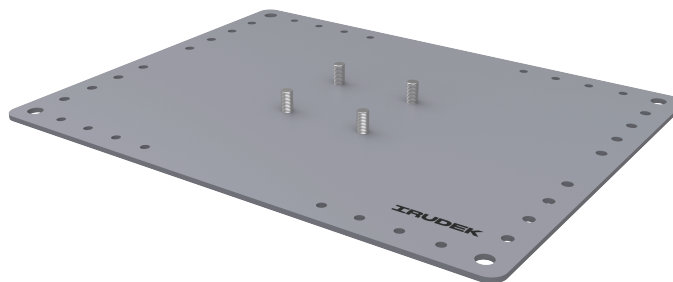
Nurodymai	200701500011
Medžiaga	Cinkuotas plienas
Svoris	2,35 kg
Matmenys	20x280x363 mm

# PLANAI



# CH PLAC INF

## Produkt



## Beskrivelse

- Lifeline-komponent CHECKLINE II
- Hovedoppgaven deres er å feste livlinen til dekket og å støtte stolpene.
- De skal festes ved hjelp av skrueplugg.

## Standard

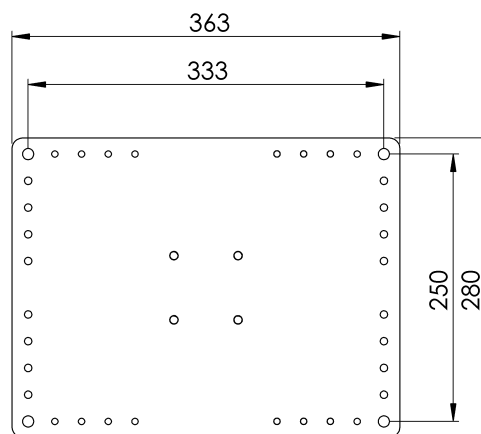
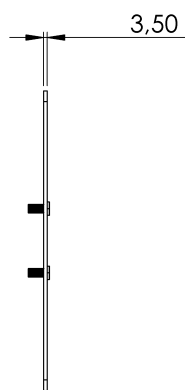
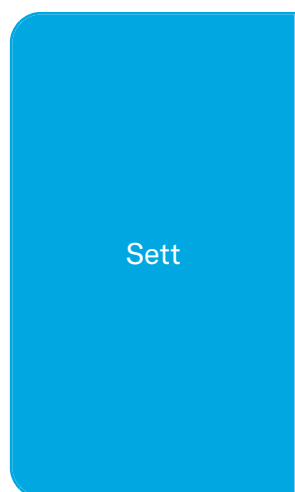
EN 795 Type A og C

# EGENSKAPER

## Generelle egenskaper

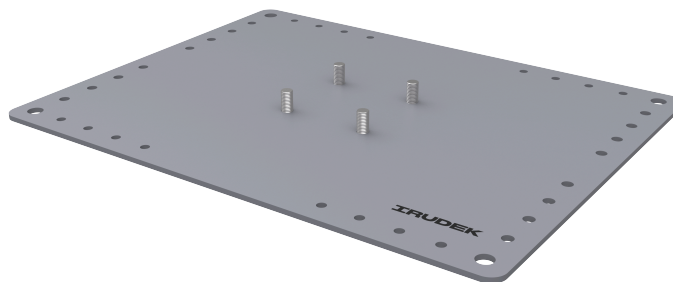
Referanse	200701500011
Materiale	Galvanisert stål
Vekt	2,35 kg
Dimensjoner	20x280x363 mm

# PLANER



# CH PLAC INF

Produs



Descriere

- Componentă Lifeline CHECKLINE II
- Sarcina lor principală este de a fixa linia de salvare pe punte și de a susține stâlpii.
- Acestea se fixează cu ajutorul unor dopuri cu șurub.

Standard

EN 795 Tip A și C

## CARACTERISTICI

Caracteristici  
generale

Referință	200701500011
Material	Oțel galvanizat
Greutate	2,35 kg
Dimensiuni	20x280x363 mm

# PLANURI

