



# ANILLA MACHO - SK ANILLA M

# SK ANILLA M

FICHA TÉCNICA

Producto



## Descripción

- Componente de la línea de vida SEKURCABLE.
- Su principal misión es fijar la línea de vida vertical al suelo.
- Macho M12.

## Norma

EN 353-1

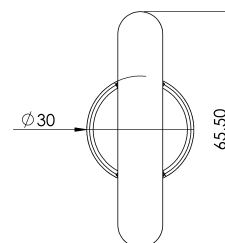
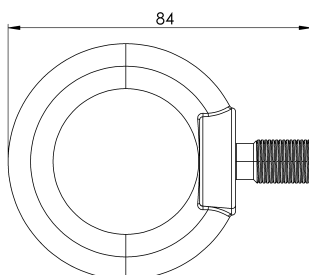
## CARACTERÍSTICAS

### Características generales

Referencia	203609800002
Material	Acero Inoxidable
Peso	0,15 Kg
Dimensiones	80x55x20 mm

## PLANOS

Conjunto



# SK RING M

## Product



### Description

- SEKURCABLE lifeline component.
- Its main task is to fix the vertical lifeline to the ground.
- M12 male.

### Standard

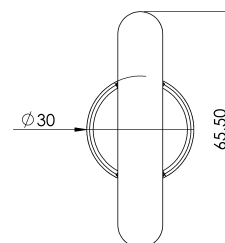
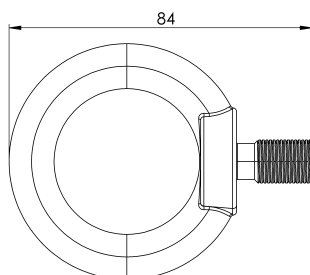
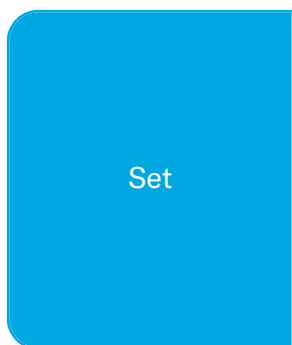
EN 353-1

## CHARACTERISTICS

### General characteristics

Reference	203609800002
Material	Stainless Steel
Weight	0,15 Kg
Dimensions	80x55x20 mm

# PLANS



# SK ANILLA M

Prodotto



## Descrizione

- Componente della linea vita SEKURCABLE.
- La sua funzione principale è fissare la linea vita verticale al suolo.
- Filettatura Maschio M12 .

## NORMA

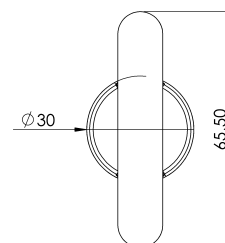
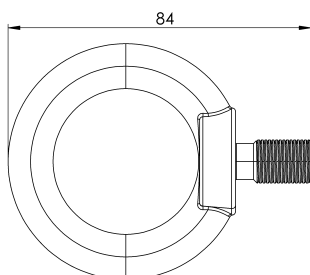
EN 353-1

## CARATTERISTICHE

### Caratteristiche generali

Codice	203609800002
Materiale	Acciaio inox
Peso	0,15 Kg
Dimensioni	80x55x20 mm

# DISEGNO TECNICO



# ANEL DE ROSCA M

Produto



## Descrição

- Componente de linha de vida SEKURCABLE.
- A sua principal função é fixar a linha de vida vertical ao solo.
- M12 macho.

## Padrão

EN 353-1

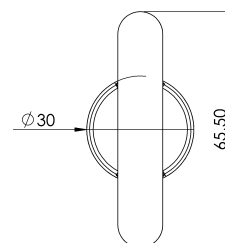
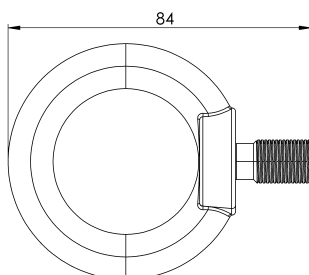
## CARACTERÍSTICAS

### Caraterísticas gerais

Referência	203609800002
Material	Aço inoxidável
Peso	0,15 kg
Dimensões	80x55x20 mm



# PLANOS



# SK RING M

## Produit



### Description

- Composant de ligne de vie SEKURCABLE.
- Sa tâche principale est de fixer la ligne de vie verticale au sol.
- M12 mâle.

### Standard

EN 353-1

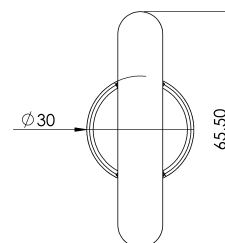
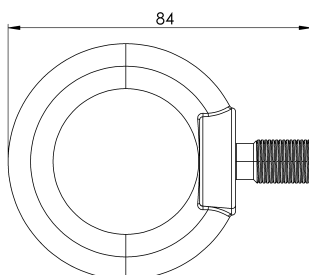
## CARACTÉRISTIQUES

### Caractéristiques générales

Référence	203609800002
Matériel	Acier inoxydable
Poids	0,15 Kg
Dimensions	80x55x20 mm

## PLANS

Set (jeu de mots)



# SK RING M

## Produkt



### Beschreibung

- SEKURCABLE-Lifeline-Komponente.
- Seine Hauptaufgabe besteht darin, die vertikale Rettungsleine am Boden zu befestigen.
- M12-Stecker.

### Standard

EN 353-1

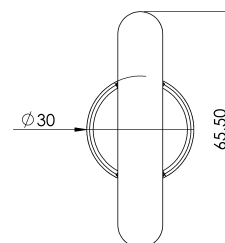
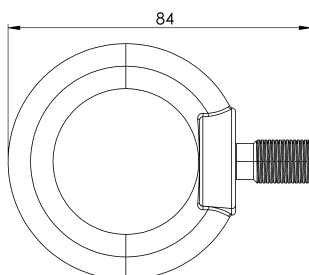
## EIGENSCHAFTEN

### Allgemeine Merkmale

Referenz	203609800002
Material	Rostfreier Stahl
Gewicht	0,15 kg
Abmessungen	80x55x20 mm

# PLANEN

Einstellung



# SK RING M

Produkt



## Opis

- Element linii życia SEKURCABLE.
- Jego głównym zadaniem jest przymocowanie pionowej linii życia do podłoża.
- M12 męski.

## Standard

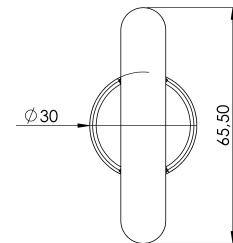
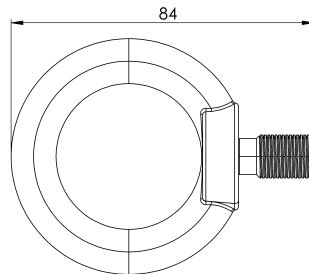
EN 353-1

## CHARAKTERYSTYKA

### Ogólna charakterystyka

Odniesienie	203609800002
Materiał	Stal nierdzewna
Waga	0,15 kg
Wymiary	80x55x20 mm

# PLANY



# SK RING M

## Termék



### Leírás

- SEKURCABLE mentőkötél alkatrész.
- Fő feladata, hogy a függőleges mentőkötelet a talajhoz rögzítse.
- M12-es hím.

### Standard

EN 353-1

## JELLEMZŐK

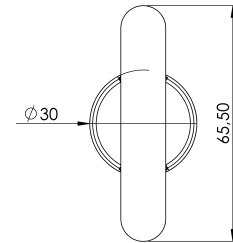
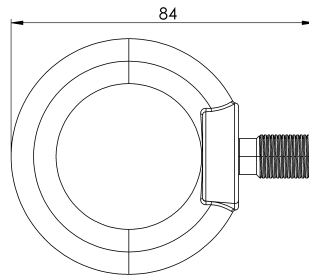
### Általános jellemzők

Hivatkozás	203609800002
Anyag	Rozsdamentes acél
Súly	0,15 kg
Méret	80x55x20 mm



## TERVEK

Állítsa be a



# Кръгъл пръстен М

Продукт



## Описание

- Компонент на спасителната линия SEKURCABLE.
- Основната му задача е да фиксира вертикалното спасително въже към земята.
- Мъжко М12.

## Стандартен

EN 353-1

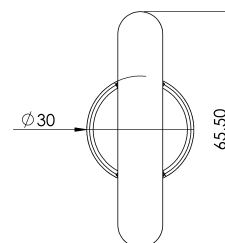
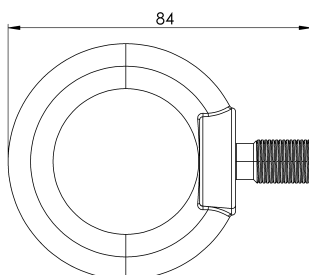
## ХАРАКТЕРИСТИКИ

### Общи характеристики

Справка	203609800002
Материал	Неръждаема стомана
Тегло	0,15 кг
Размери	80x55x20 мм

# ПЛАНОВЕ

Задайте



# ANEL DE ROSCA M

Produto



## Descrição

- Componente de linha de vida SEKURCABLE.
- Sua principal tarefa é fixar a linha de vida vertical ao solo.
- M12 macho.

## Padrão

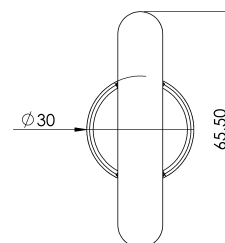
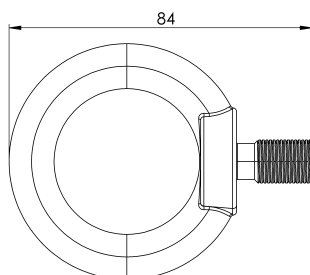
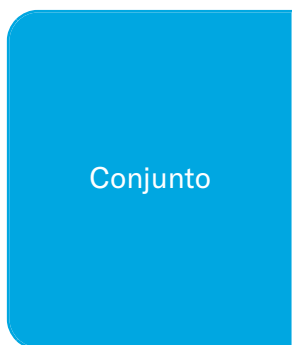
EN 353-1

## CARACTERÍSTICAS

### Características gerais

Referência	203609800002
Material	Aço inoxidável
Peso	0,15 kg
Dimensões	80x55x20 mm

# PLANOS



# SK RING M

## Produkt



### Popis

- Záchranné lano SEKURCABLE.
- Jeho hlavnou úlohou je upevniť vertikálne záchranné lano k zemi.
- M12 samec.

### Štandard

EN 353-1

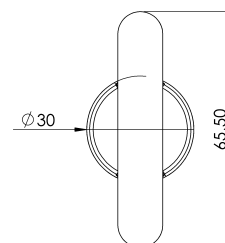
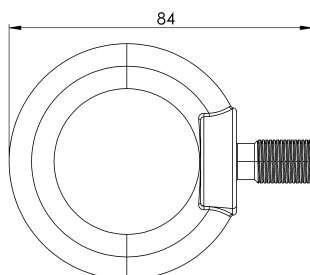
## CHARAKTERISTIKA

### Všeobecná charakteristika

Referencia	203609800002
Materiál	Nerezová oceľ
Hmotnosť	0,15 kg
Rozmery	80x55x20 mm

## PLÁNY

Nastavenie



# SK RING M

## Produkt



### Beskrivning

- SEKURCABLE livlinjekomponent.
- Dess huvuduppgift är att fästa den vertikala livlinan i marken.
- M12 manlig.

### Standard

EN 353-1

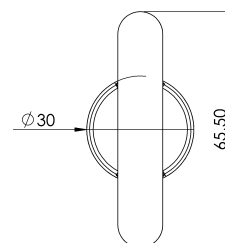
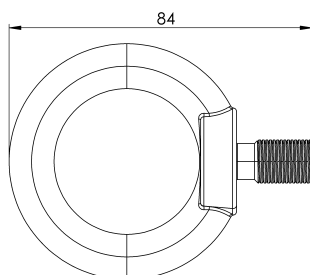
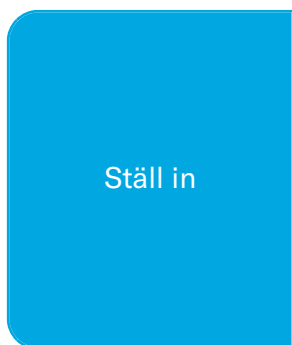
## EGENSKAPER

### Allmänna egenskaper

Reference (referens)	203609800002
Material	Rostfritt stål
Vikt	0,15 kg
Dimensioner	80x55x20 mm



# PLANER



# SK žiedas M

Produktas



Aprašymas

- SEKURCABLE gelbėjimo linijos komponentas.
- Pagrindinė jo užduotis - pritvirtinti vertikalų gelbėjimo lyną prie žemės.
- M12 vyriškis.

Standartinis

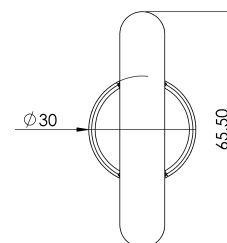
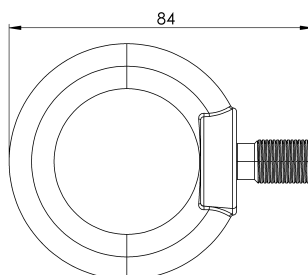
EN 353-1

## CHARAKTERISTIKOS

Bendrosios savybės	Nurodymai	203609800002
	Medžiaga	Nerūdijantis plienas
	Svoris	0,15 kg
	Matmenys	80x55x20 mm

## PLANAI

Nustatyti



# SK RING M

## Produkt



### Beskrivelse

- SEKURCABLE livlinekomponent.
- Hovedoppgaven er å feste den vertikale livlinen til bakken.
- M12 hann.

### Standard

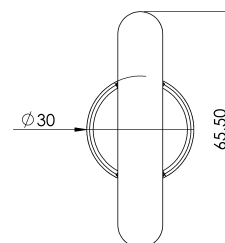
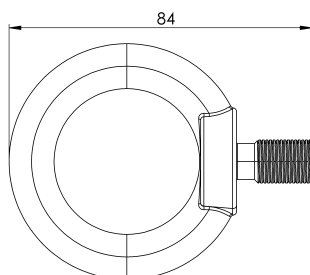
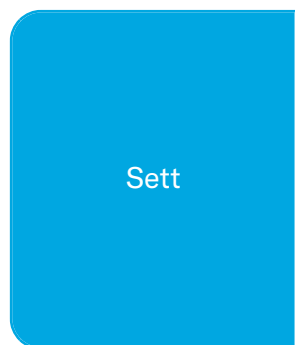
EN 353-1

## EGENSKAPER

### Generelle egenskaper

Referanse	203609800002
Materiale	Rustfritt stål
Vekt	0,15 kg
Dimensjoner	80x55x20 mm

# PLANER



# SK RING M

Produs



## Descriere

- Componentă a liniei de viață SEKURCABLE.
- Sarcina sa principală este de a fixa linia de salvare verticală la sol.
- M12 masculin.

## Standard

EN 353-1

## CARACTERISTICI

### Caracteristici generale

Referință	203609800002
Material	Oțel inoxidabil
Greutate	0,15 Kg
Dimensiuni	80x55x20 mm

## PLANURI

