

# PIEZA EXTREMO A ENGASTAR – CH PEE

# CH PEE

FICHA TÉCNICA

## Producto



## Descripción

- Componente de la línea de vida CHECKLINE II
- Su principal misión es ajustar las líneas de vida a la medida adecuada.
- Se suele utilizar en líneas cortas y sin demasiados virajes.

## Norma

EN 795 Tipo C

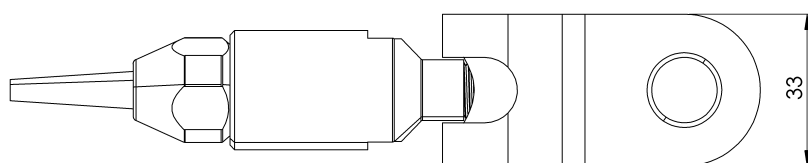
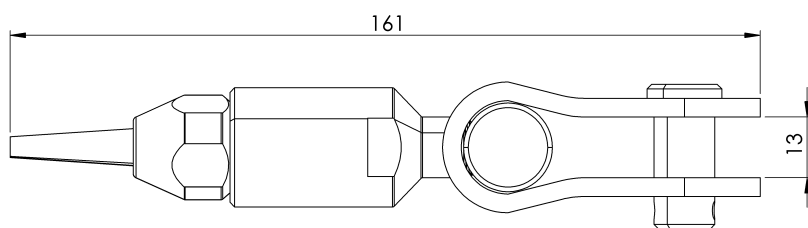
## CARACTERÍSTICAS

### Características generales

Referencia	20070150007
Material	Acero Inox 304
Peso	0,25 kg
Dimensiones	147,25xØ33x 1 mm

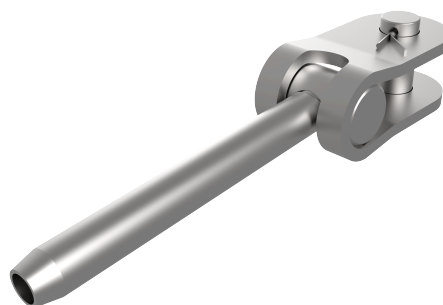
# PLANOS

Conjunto



# CH PEE

## Product



## Description

- Lifeline component CHECKLINE II
- Its main task is to adjust the lifelines to the right size.
- It is usually used on short lines without too many turns;

## Standard

EN 795 Type C

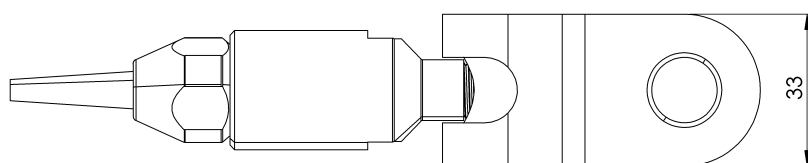
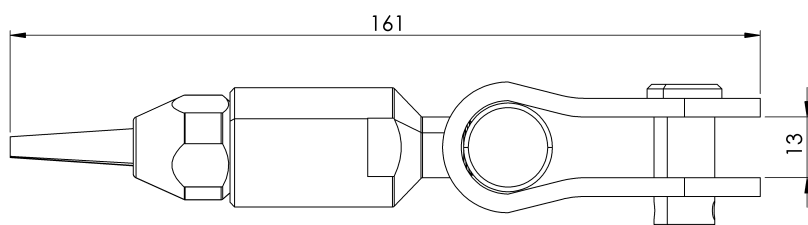
# CHARACTERISTICS

## General characteristics

Reference	20070150007
Material	304 stainless steel
Weight	0,25 kg
Dimensions	147,25xØ33x 1 mm

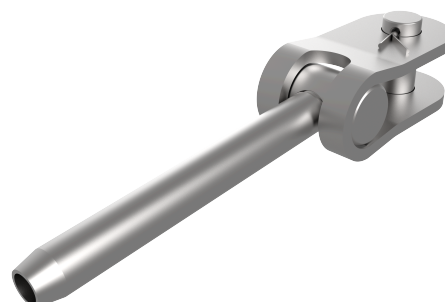
## PLANS

Set



# CH PEE

## Prodotto



## Descrizione

- Componente della linea di vita CHECKLINE II
- Il suo compito principale è quello di regolare le linee di vita alla giusta misura.
- Di solito viene utilizzato su linee corte senza troppe curve;

## Standard

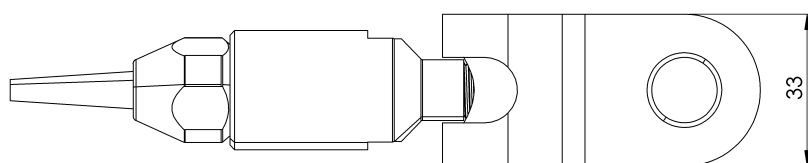
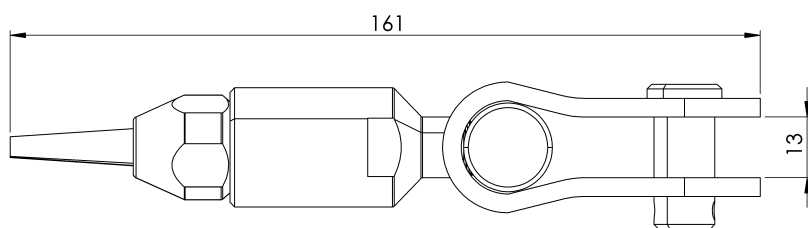
EN 795 Tipo C

# CARATTERISTICHE

Caratteristiche generali	Riferimento	20070150007
	Materiale	Acciaio inox 304
	Peso	0,25 kg
	Dimensioni	147,25xØ33x 1 mm

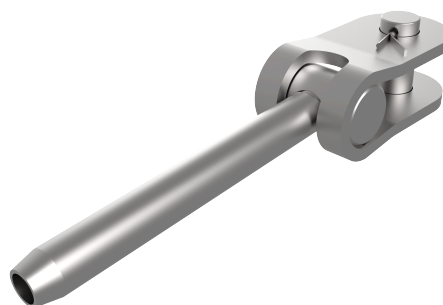
# PIANI

Set



# CH PEE

## Produto



## Descrição

- Componente da linha de vida CHECKLINE II
- A sua principal função é ajustar as linhas de vida à dimensão correta.
- É normalmente utilizado em linhas curtas sem demasiadas curvas;

## Padrão

EN 795 Tipo C

## CARACTERÍSTICAS

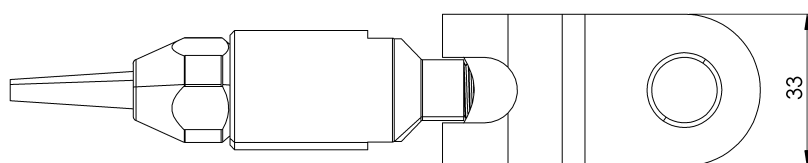
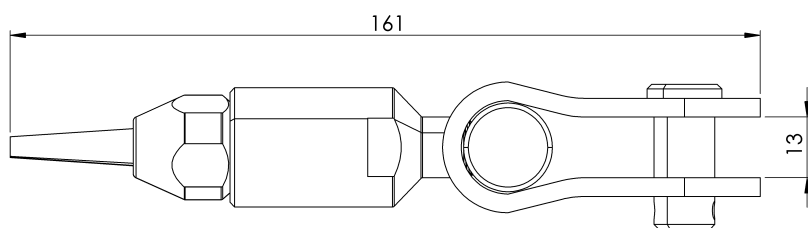
### Caraterísticas gerais

Referência	20070150007
Material	Aço inoxidável 304
Peso	0,25 kg
Dimensões	147,25xØ33x 1 mm



# PLANOS

Conjunto



## CH PEE

## Produit



## Description

- Composant de la ligne de vie CHECKLINE II
- Sa tâche principale est d'ajuster les lignes de vie à la bonne taille.
- Il est généralement utilisé sur des lignes courtes sans trop de virages ;

## Standard

EN 795 Type C

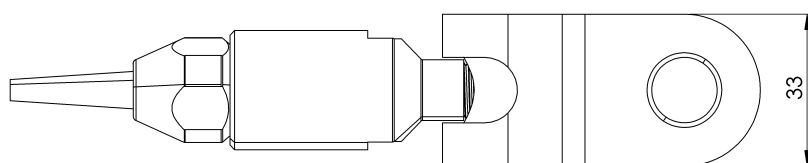
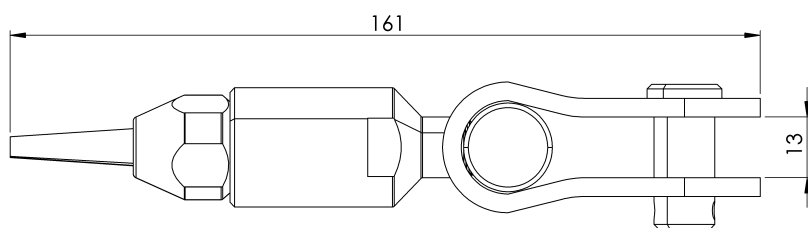
## CARACTÉRISTIQUES

Caractéristiques  
générales

Référence	20070150007
Matériel	Acier inoxydable 304
Poids	0,25 kg
Dimensions	147,25xØ33x 1 mm

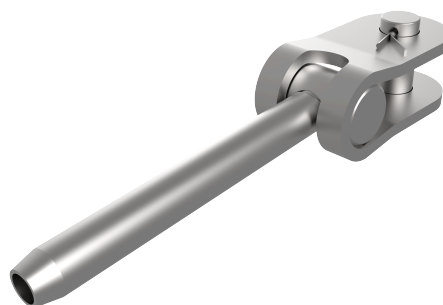
# PLANS

Set (jeu de mots)



# CH PEE

## Produkt



## Beschreibung

- Lifeline-Bauteil CHECKLINE II
- Seine Hauptaufgabe besteht darin, die Rettungsleinen auf die richtige Größe einzustellen.
- Er wird in der Regel auf kurzen Strecken ohne allzu viele Kurven eingesetzt;

## Standard

EN 795 Typ C

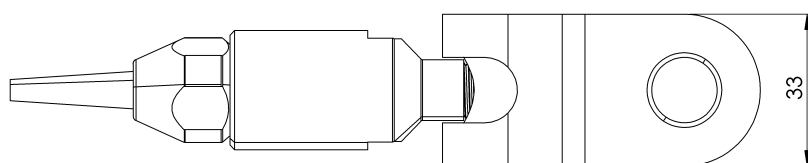
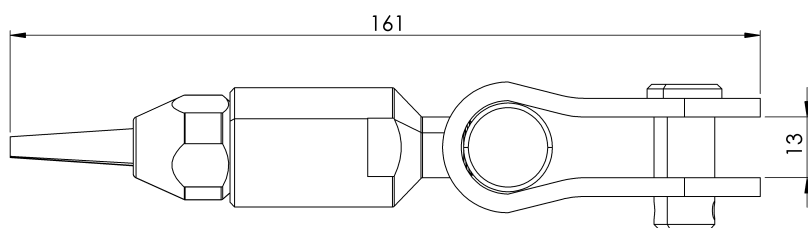
# EIGENSCHAFTEN

## Allgemeine Merkmale

Referenz	20070150007
Material	Rostfreier Stahl 304
Gewicht	0,25 kg
Abmessungen	147,25xØ33x 1 mm

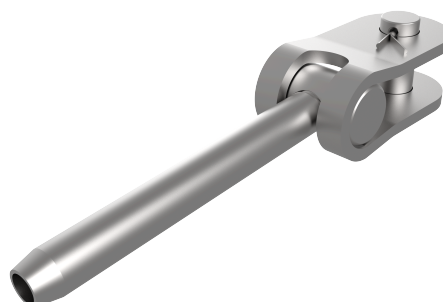
# PLANEN

Satz



# CH PEE

## Produkt



## Opis

- Element linii życia CHECKLINE II
- Jego głównym zadaniem jest dostosowanie linii życia do odpowiedniego rozmiaru.
- Jest on zwykle używany na krótkich liniach bez zbyt wielu zakrętów;

## Standard

EN 795 Typ C

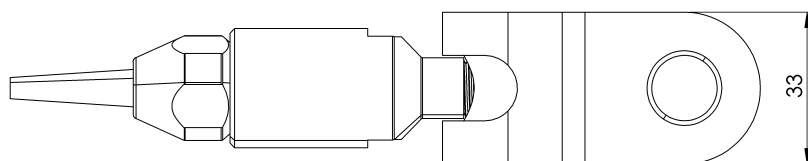
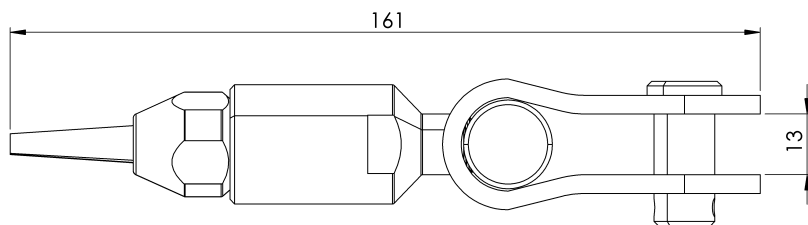
# CHARAKTERYSTYKA

## Ogólna charakterystyka

Odniesienie	20070150007
Material	Stal nierdzewna 304
Waga	0,25 kg
Wymiary	147,25xØ33x 1 mm

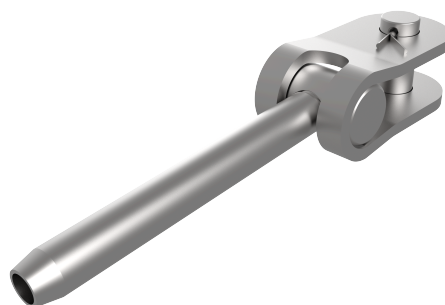
# PLANY

Zestaw



# CH PEE

## Termék



## Leírás

- Mentővonal komponens CHECKLINE II
- Fő feladata a mentőkötelek megfelelő méretre történő beállítása.
- Általában rövid vonalakon használják, túl sok kanyar nélkül;

## Standard

EN 795 C típus

## JELLEMZŐK

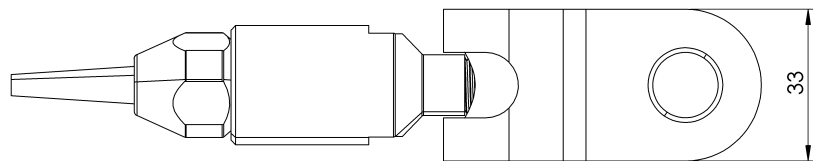
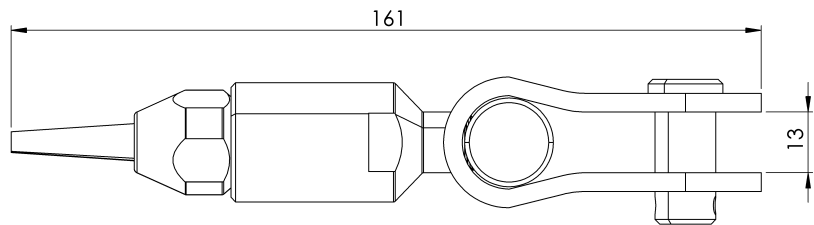
### Általános jellemzők

Hivatkozás	20070150007
Anyag	304 rozsdamentes acél
Súly	0,25 kg
Méretetek	147,25xØ33x1 mm



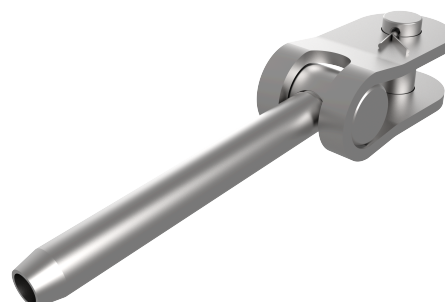
## TERVEK

Állítsa be a



# CH PEE

## Produto



## Descrição

- Componente da linha de vida CHECKLINE II
- Sua principal tarefa é ajustar as linhas de vida ao tamanho correto.
- Geralmente é usado em linhas curtas sem muitas curvas;

## Padrão

EN 795 Tipo C

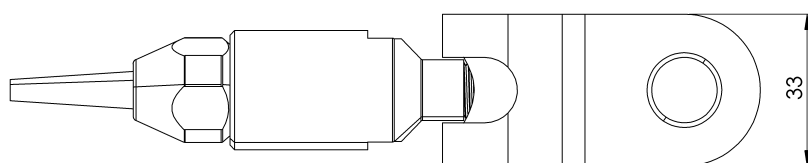
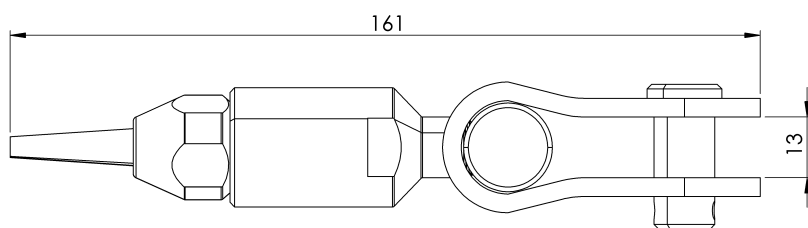
# CARACTERÍSTICAS

## Características gerais

Referência	20070150007
Material	Aço inoxidável 304
Peso	0,25 kg
Dimensões	147,25xØ33x 1 mm

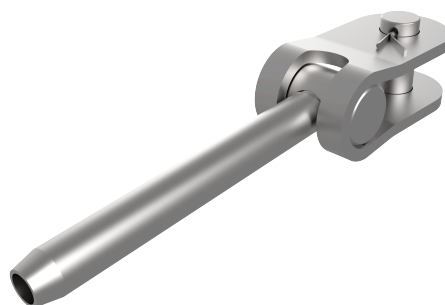
# PLANOS

Conjunto



# CH PEE

## Продукт



## Описание

- Компонент на спасителната линия CHECKLINE II
- Основната му задача е да регулира спасителните въжета до необходимия размер.
- Обикновено се използва за къси линии без много завои;

## Стандартен

EN 795 Тип C

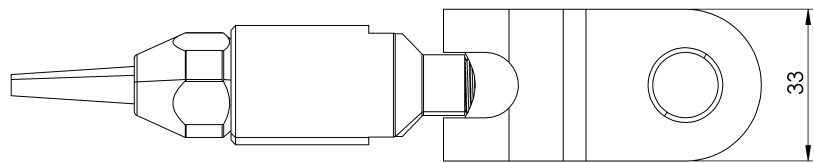
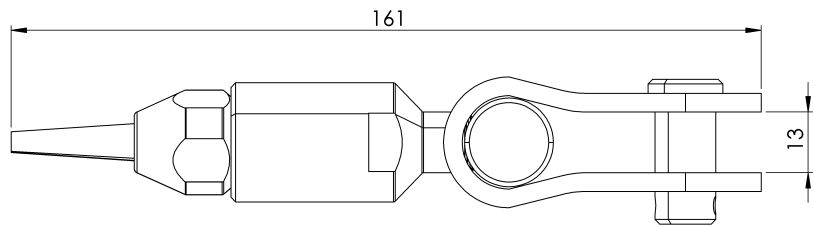
# ХАРАКТЕРИСТИКИ

## Общи характеристики

Справка	20070150007
Материал	304 неръждаема стомана
Тегло	0,25 кг
Размери	147,25xØ33x 1 mm

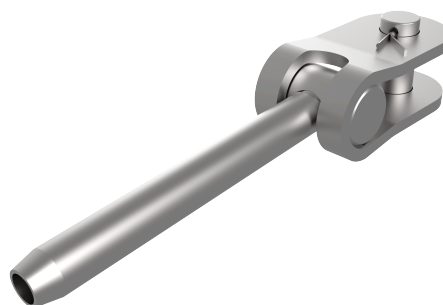
# ПЛАНОВЕ

Задайте



# CH PEE

## Produkt



## Beskrivning

- Lifeline-komponent CHECKLINE II
- Dess huvuduppgift är att justera livlinorna till rätt storlek.
- Den används vanligtvis på korta linjer utan alltför många svängar;

## Standard

EN 795 Typ C

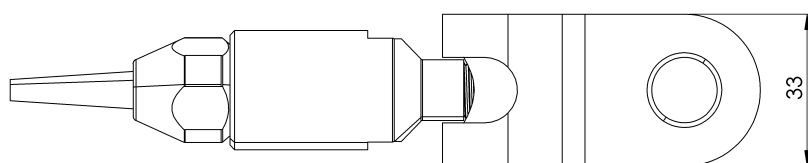
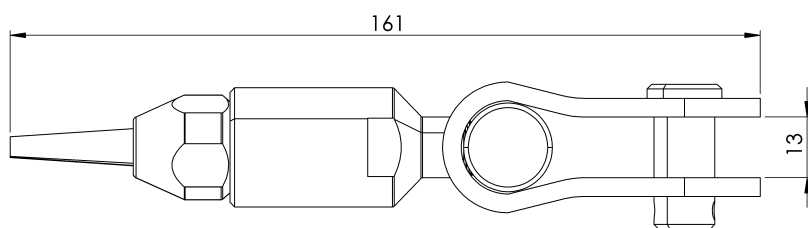
# EGENSKAPER

## Allmänna egenskaper

Reference (referens)	20070150007
Material	304 rostfritt stål
Vikt	0,25 kg
Dimensioner	147,25xØ33x 1 mm

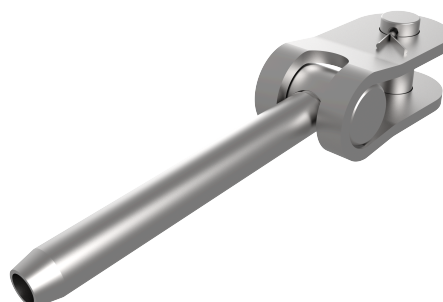
# PLANER

Ställ in



# CH PEE

## Produkt



## Popis

- Komponent záchrannéj línie CHECKLINE II
- Jeho hlavnou úlohou je nastaviť záchranné laná na správnu veľkosť.
- Zvyčajne sa používa na krátkych tratiach bez veľkého počtu zákrut;

## Štandard

EN 795 Typ C

# CHARAKTERISTIKA

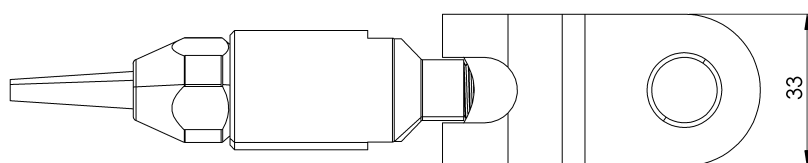
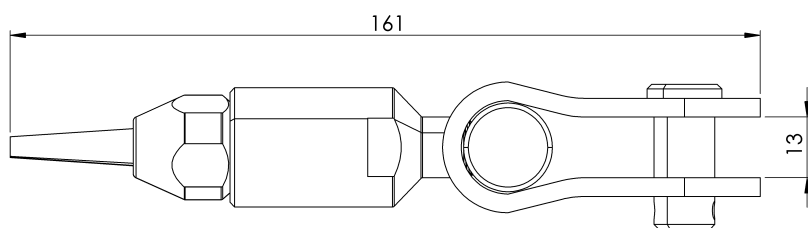
## Všeobecná charakteristika

Referencia	20070150007
Materiál	304 nehrdzavejúca oceľ
Hmotnosť	0,25 kg
Rozmery	147,25xØ33x 1 mm



## PLÁNY

Nastavenie



# CH PEE

## Produktas



## Aprašymas

- Gelbėjimo linijos komponentas CHECKLINE II
- Pagrindinė jo užduotis - sureguliuoti tinkamo dydžio gelbėjimo virves.
- Jis paprastai naudojamas trumpose linijose be daug posūkių;

## Standartinis

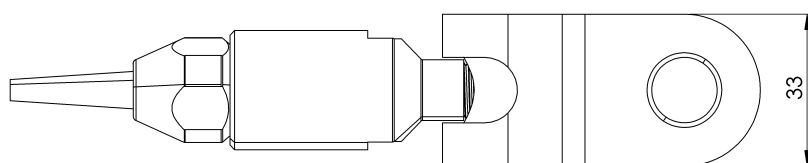
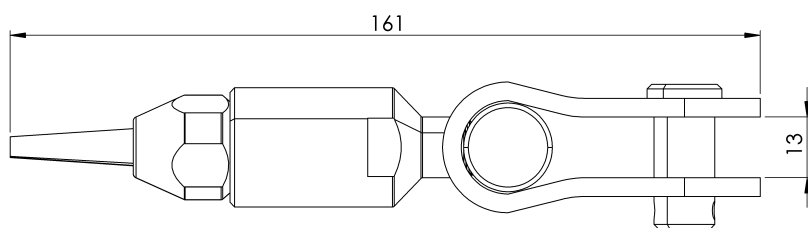
EN 795 C tipas

# CHARAKTERISTIKOS

Bendrosios savybės	Nurodymai	20070150007
	Medžiaga	304 nerūdijantis plienas
	Svoris	0,25 kg
	Matmenys	147,25xØ33x 1 mm

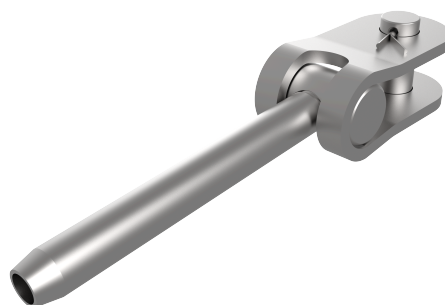
## PLANAI

Nustatyti



# CH PEE

## Produkt



## Beskrivelse

- Lifeline-komponent CHECKLINE II
- Hovedoppgaven er å justere livlinene til riktig størrelse.
- Den brukes vanligvis på korte linjer uten for mange svinger;

## Standard

EN 795 Type C

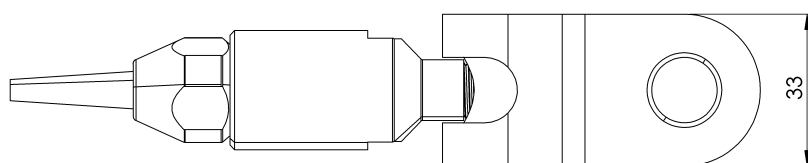
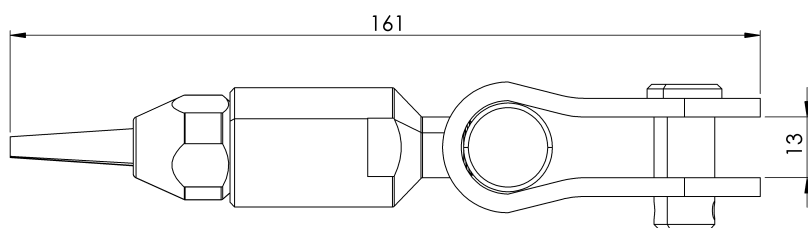
# EGENSKAPER

## Generelle egenskaper

Referanse	20070150007
Materiale	304 rustfritt stål
Vekt	0,25 kg
Dimensjoner	147,25xØ33x 1 mm

# PLANER

Sett



# CH PEE

## Produs



## Descriere

- Componentă Lifeline CHECKLINE II
- Sarcina sa principală este de a ajusta frânghiile de salvare la dimensiunea corectă.
- Acesta este utilizat de obicei pe linii scurte, fără prea multe viraje;

## Standard

EN 795 Tip C

## CARACTERISTICI

### Caracteristici generale

Referință	20070150007
Material	304 oțel inoxidabil
Greutate	0,25 kg
Dimensiuni	147,25xØ33x 1 mm

## PLANURI

Set

