

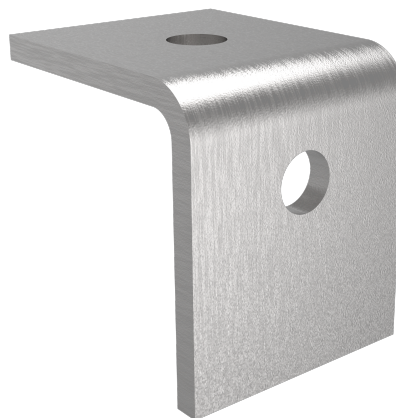


SOPORTE TECHO - LF ST

LF ST

FICHA TÉCNICA

Producto



Descripción

- Componente de la línea de vida LIFELINE 2000
- Su principal misión es hacer de apoyos para las piezas intermedias.
- Se tiene que instalar a techo, bajo cubierta.

Norma

EN 795 Tipo C

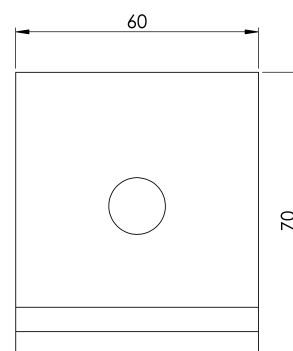
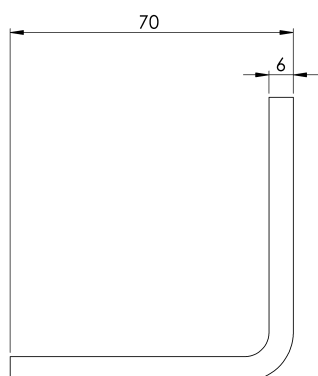
CARACTERÍSTICAS

Características generales

Referencia	201804400014
Material	Acero Inox 316
Peso	0,35 kg
Dimensiones	70x70x60 mm

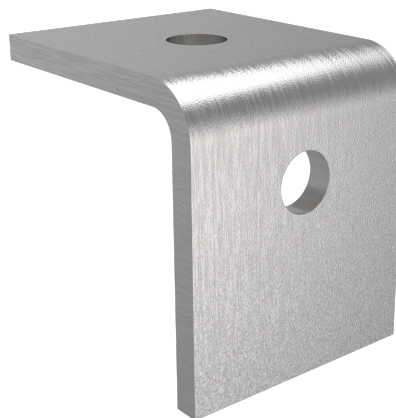
PLANOS

Conjunto



LF ST

Product



Description

- LIFELINE 2000 Lifeline Component
- Their main task is to act as supports for the intermediate pieces.
- It has to be installed on the ceiling, under the roof.

Standard

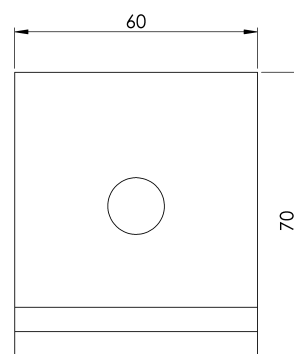
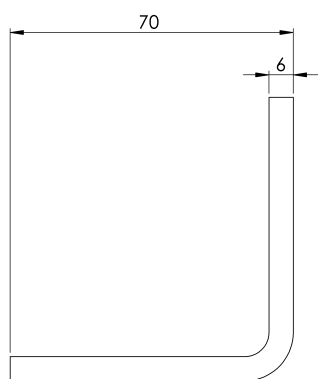
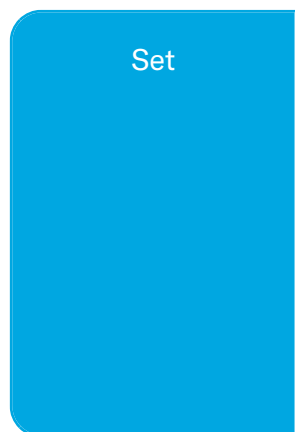
EN 795 Type C

CHARACTERISTICS

General characteristics

Reference	201804400014
Material	316 Stainless Steel
Weight	0,35 kg
Dimensions	70x70x60 mm

PLANS



LF ST

Prodotto



Descrizione

- LIFELINE 2000 Componente della linea di vita
- Il loro compito principale è quello di fungere da supporto per i pezzi intermedi.
- Deve essere installato sul soffitto, sotto il tetto.

Standard

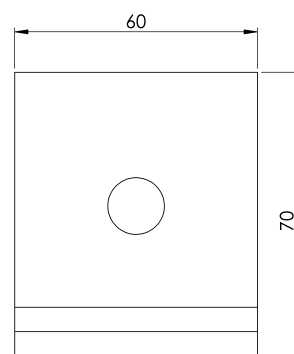
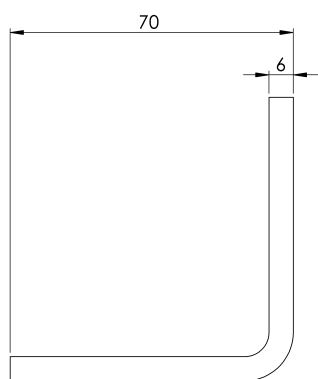
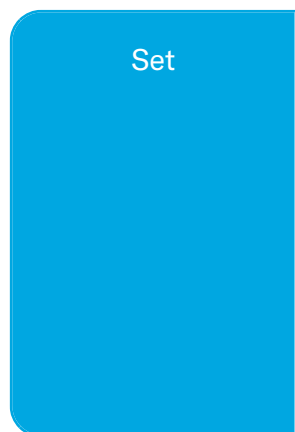
EN 795 Tipo C

CARATTERISTICHE

Caratteristiche generali

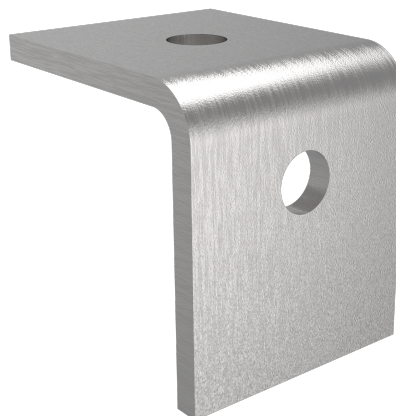
Riferimento	201804400014
Materiale	Acciaio inox 316
Peso	0,35 kg
Dimensioni	70x70x60 mm

PIANI



LF ST

Produto



Descrição

- LIFELINE 2000 Componente Lifeline
- A sua principal função é servir de suporte para as peças intermédias.
- Tem de ser instalado no teto, sob o telhado.

Padrão

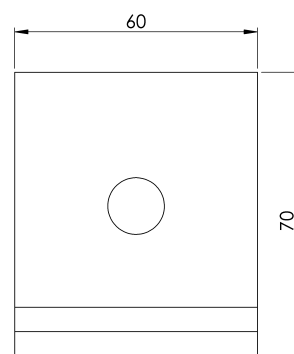
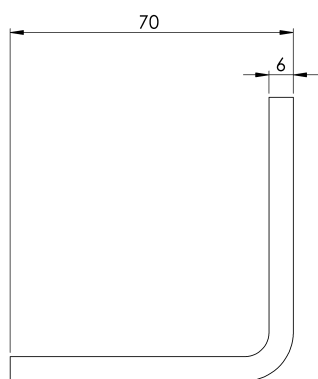
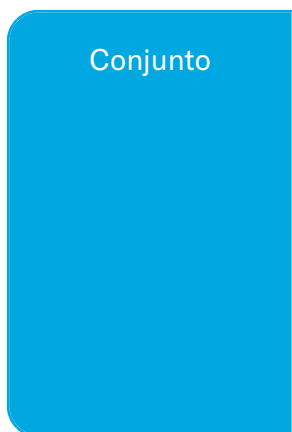
EN 795 Tipo C

CARACTERÍSTICAS

Caraterísticas gerais

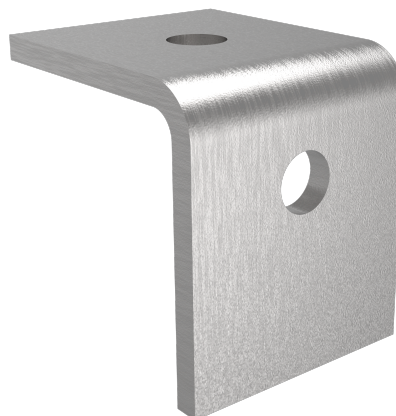
Referência	201804400014
Material	Aço inoxidável 316
Peso	0,35 kg
Dimensões	70x70x60 mm

PLANOS



LF ST

Produit



Description

- LIFELINE 2000 Composant Lifeline
- Leur tâche principale est de servir de support aux pièces intermédiaires.
- Il doit être installé au plafond, sous le toit.

Standard

EN 795 Type C

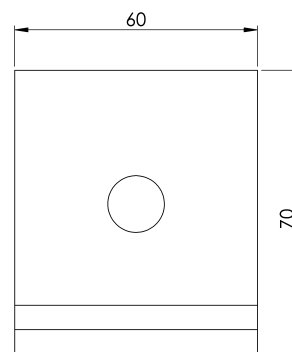
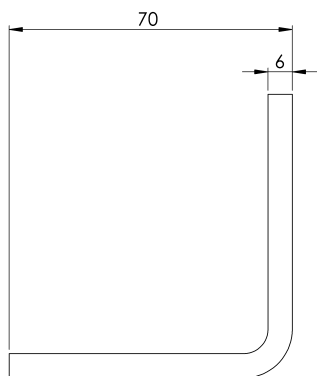
CARACTÉRISTIQUES

Caractéristiques
générales

Référence	201804400014
Matériel	Acier inoxydable 316
Poids	0,35 kg
Dimensions	70x70x60 mm

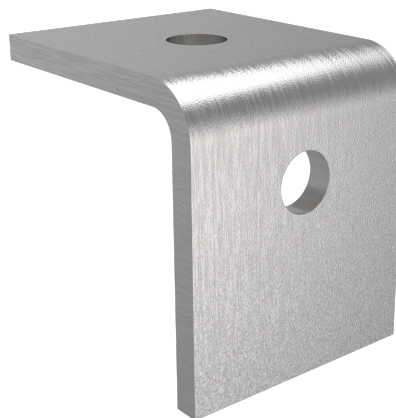
PLANS

Set (jeu de mots)



LF ST

Produkt



Beschreibung

- LIFELINE 2000 Lebenslinie Komponente
- Ihre Hauptaufgabe besteht darin, als Stützen für die Zwischenstücke zu dienen.
- Es muss an der Decke, unter dem Dach, installiert werden.

Standard

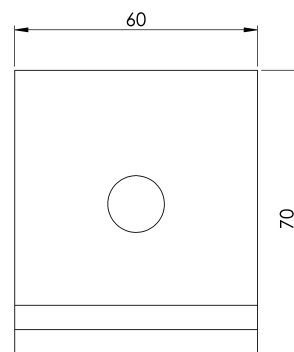
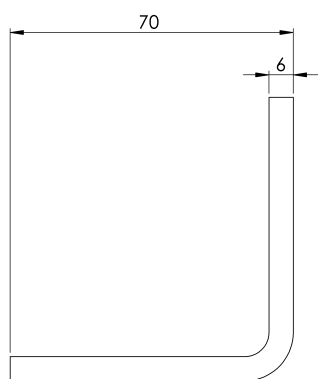
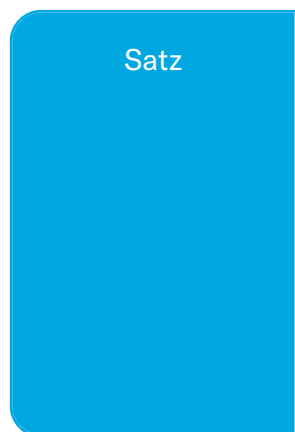
EN 795 Typ C

EIGENSCHAFTEN

Allgemeine
Merkmale

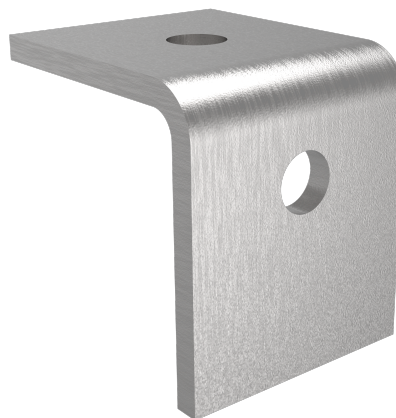
Referenz	201804400014
Material	Edelstahl 316
Gewicht	0,35 kg
Abmessungen	70x70x60 mm

PLANEN



LF ST

Produkt



Opis

- LIFELINE 2000 Element linii życia
- Ich głównym zadaniem jest działanie jako podpory dla elementów pośrednich.
- Musi być zainstalowany na suficie, pod dachem.

Standard

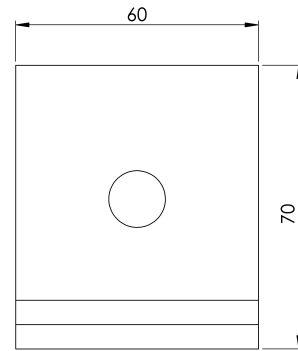
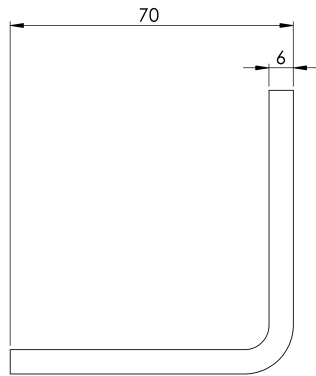
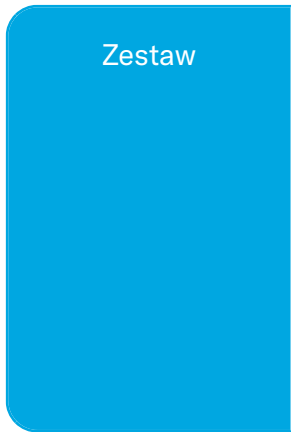
EN 795 Typ C

CHARAKTERYSTYKA

Ogólna charakterystyka

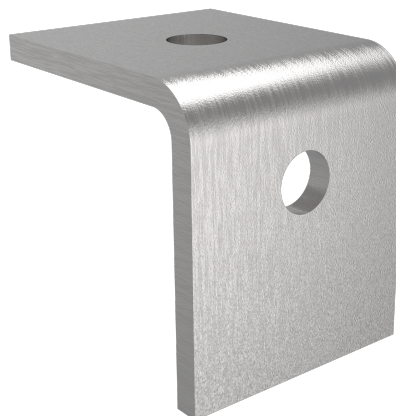
Odniesienie	201804400014
Materiał	Stal nierdzewna 316
Waga	0,35 kg
Wymiary	70x70x60 mm

PLANY



LF ST

Termék



Leírás

- LIFELINE 2000 Életvonal-összetevő
- Fő feladatuk, hogy támasztékként szolgáljanak a köztes darabok számára.
- A mennyezetre kell felszerelni, a tető alá.

Standard

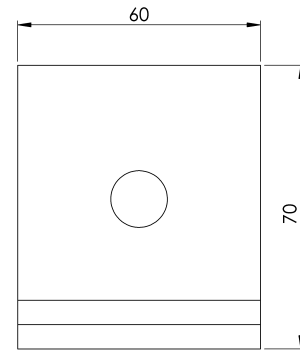
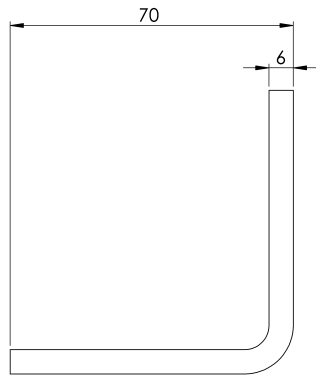
EN 795 C típus

JELLEMZŐK

Általános jellemzők	Hivatkozás	201804400014
	Anyag	316 rozsdamentes acél
	Súly	0,35 kg
	Méret	70x70x60 mm

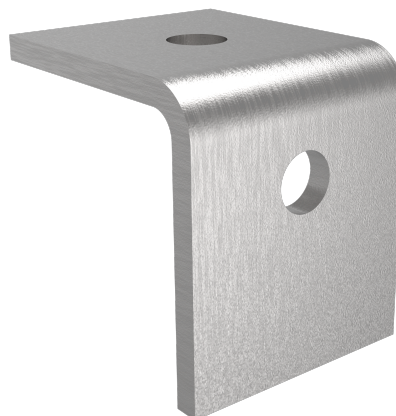
TERVEK

Állítsa be a



LF ST

Produto



Descrição

- Componente do LIFELINE 2000 Lifeline
- Sua principal tarefa é atuar como suporte para as peças intermediárias.
- Ele deve ser instalado no teto, sob o telhado.

Padrão

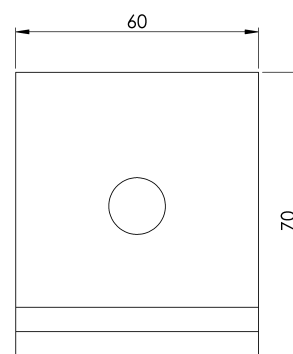
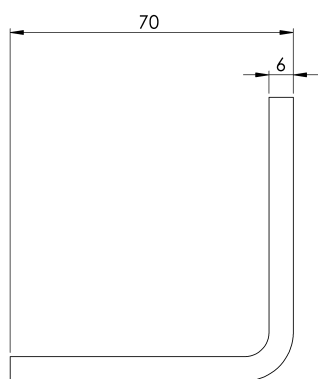
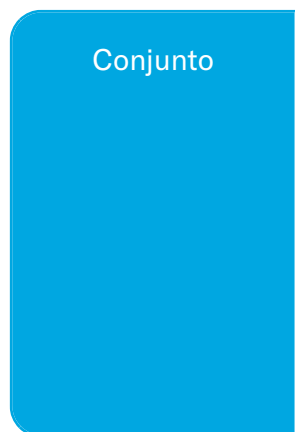
EN 795 Tipo C

CARACTERÍSTICAS

Características gerais

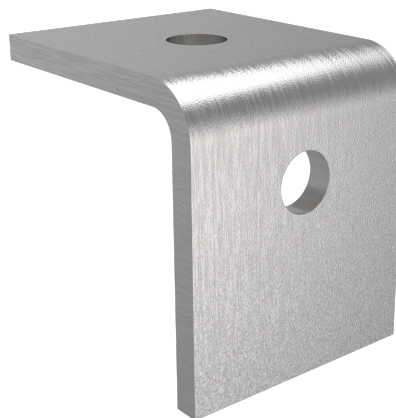
Referência	201804400014
Material	Aço inoxidável 316
Peso	0,35 kg
Dimensões	70x70x60 mm

PLANOS



LF ST

Продукт



Описание

- LIFELINE 2000 Компонент на линията на живота
- Тяхната основна задача е да служат като опора за междинните елементи.
- Тя трябва да се монтира на тавана, под покрива.

Стандартен

EN 795 Тип C

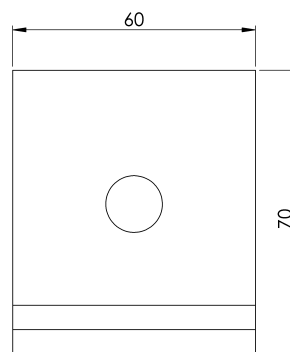
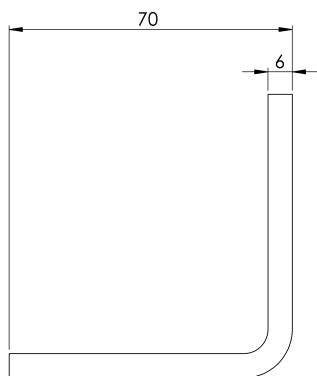
ХАРАКТЕРИСТИКИ

Общи характеристики

Справка	201804400014
Материал	316 неръждаема стомана
Тегло	0,35 кг
Размери	70x70x60 мм

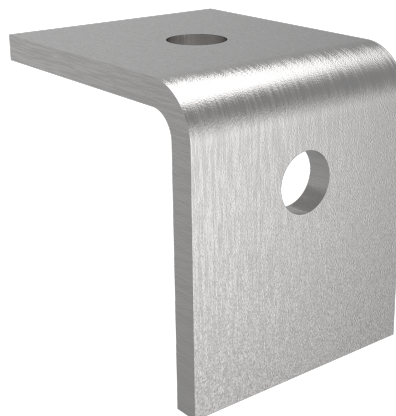
ПЛАНОВЕ

Задайте



LF ST

Produkt



Beskrivning

- LIFELINE 2000 Lifeline-komponent
- Deras huvuduppgift är att fungera som stöd för de mellanliggande delarna.
- Den måste installeras i taket, under taket.

Standard

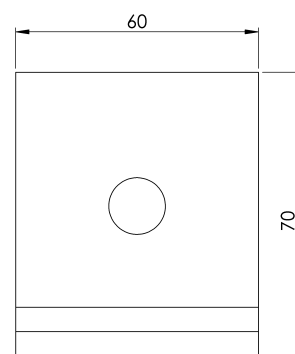
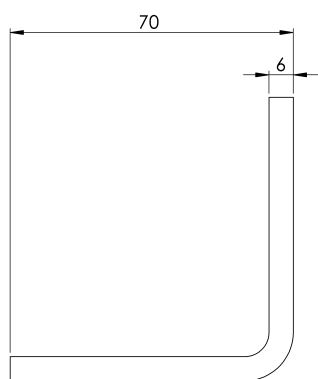
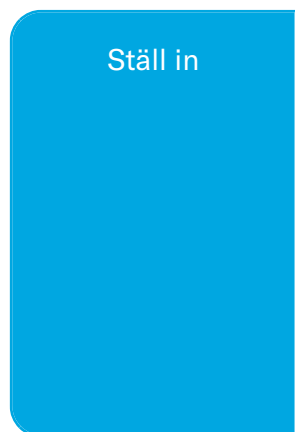
EN 795 Typ C

EGENSKAPER

Allmänna egenskaper

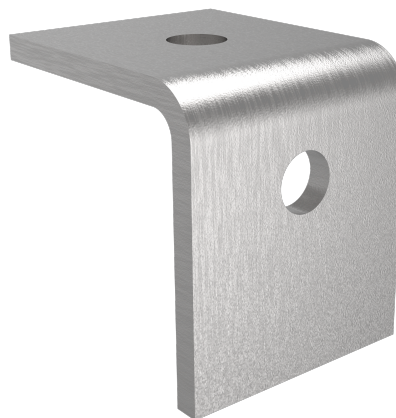
Reference (referens)	201804400014
Material	316 Rostfritt stål
Vikt	0,35 kg
Dimensioner	70x70x60 mm

PLANER



LF ST

Produkt



Popis

- LIFELINE 2000 Komponent Lifeline
- Ich hlavnou úlohou je slúžiť ako podpery pre medziprodukty.
- Musí byť nainštalovaný na strope, pod strechou.

Štandard

EN 795 Typ C

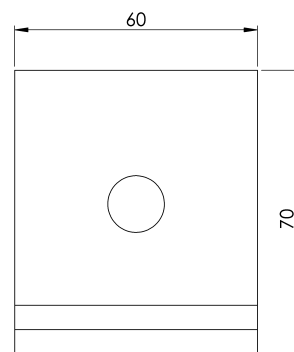
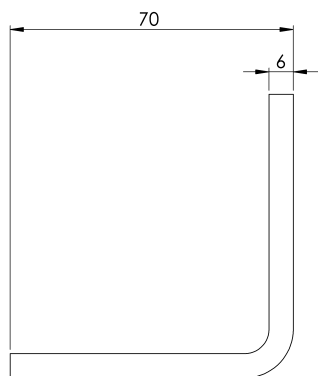
CHARAKTERISTIKA

Všeobecná
charakteristika

Referencia	201804400014
Materiál	Nerezová oceľ 316
Hmotnosť	0,35 kg
Rozmery	70x70x60 mm

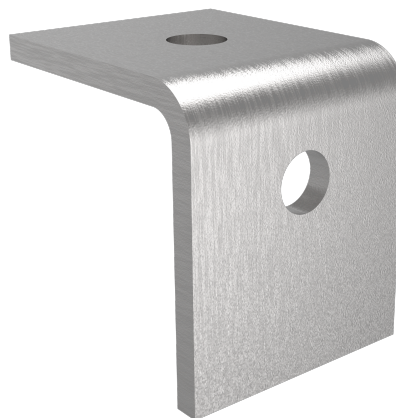
PLÁNY

Nastavenie



LF ST

Produktas



Aprašymas

- LIFELINE 2000 Lifeline komponentas
- Pagrindinė jų užduotis - būti tarpinių dalių atrama.
- Jis turi būti sumontuotas ant lubų, po stogu.

Standartinis

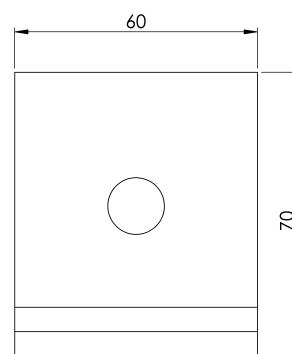
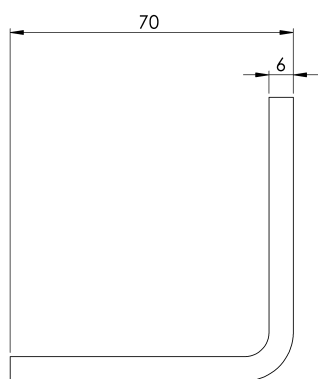
EN 795 C tipas

CHARAKTERISTIKOS

Bendrosios savybės	Nurodymai	201804400014
	Medžiaga	316 nerūdijantis plienas
	Svoris	0,35 kg
	Matmenys	70x70x60 mm

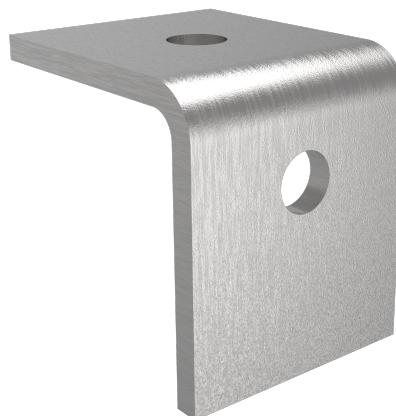
PLANAI

Nustatyti



LF ST

Produkt



Beskrivelse

- LIFELINE 2000 Lifeline-komponent
- Hovedoppgaven deres er å fungere som støtter for mellomstykkene.
- Den må installeres i taket, under taket.

Standard

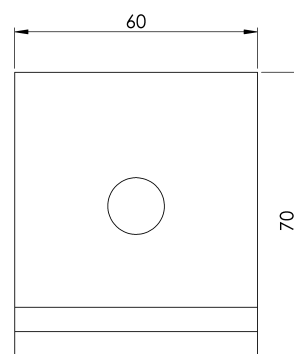
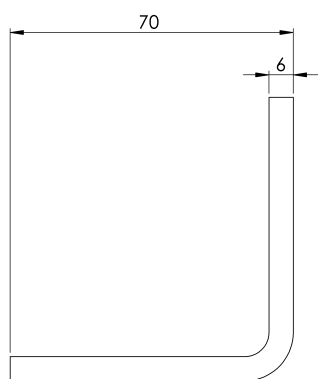
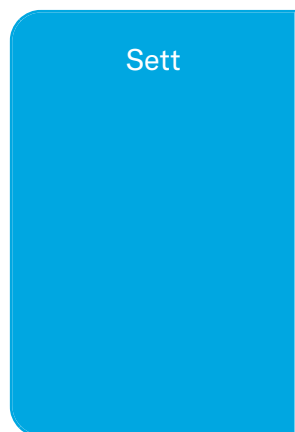
EN 795 Type C

EGENSKAPER

Generelle egenskaper

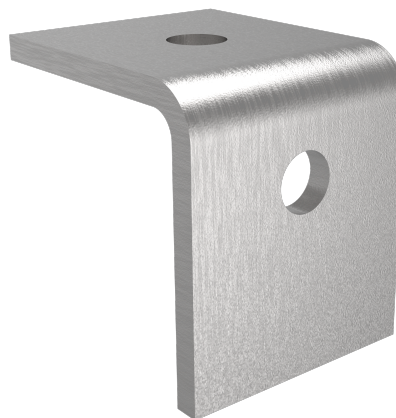
Referanse	201804400014
Materiale	316 rustfritt stål
Vekt	0,35 kg
Dimensjoner	70x70x60 mm

PLANER



LF ST

Produs



Descriere

- LIFELINE 2000 Componentă Lifeline
- Sarcina lor principală este de a servi drept suport pentru piesele intermediare.
- Trebuie să fie instalat pe tavan, sub acoperiș.

Standard

EN 795 Tip C

CARACTERISTICI

Caracteristici
generale

Referință	201804400014
Material	316 Oțel inoxidabil
Greutate	0,35 kg
Dimensiuni	70x70x60 mm

PLANURI

