

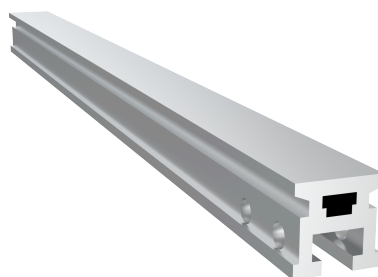


RAÍL - AR RAÍL

AR RAÍL

FICHA TÉCNICA

Producto



Descripción

- Componente de la línea de vida ALURAIL.
- Su principal misión es ser el rail por donde se transite la línea de vida.

Norma

EN 795 Tipo D

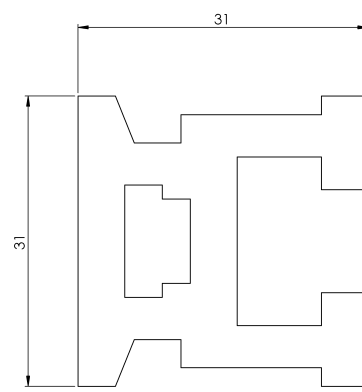
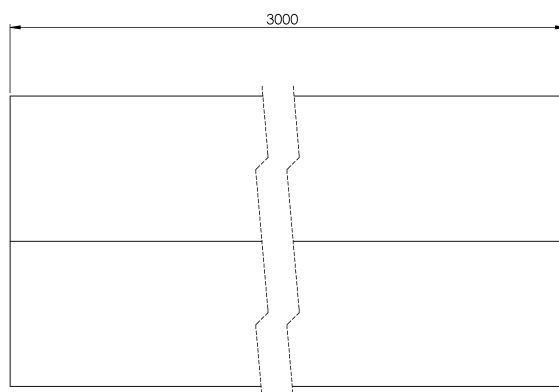
CARACTERÍSTICAS

Características generales

Referencia	203509700013
Material	Aluminio Anodizado AlMgSi 0,5
Peso	4,10 Kg
Dimensiones	31x31x3000 mm

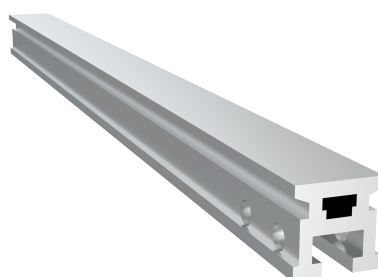
PLANOS

Conjunto



AR RAÍL

Product



Description

- Component of the ALURAIL lifeline.
- Its main mission is to be the rail on which the lifeline runs.

Standard

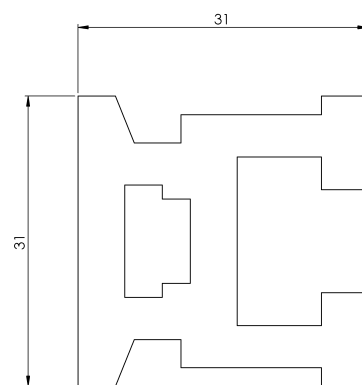
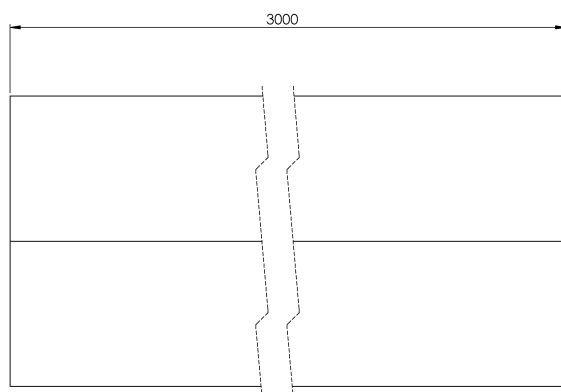
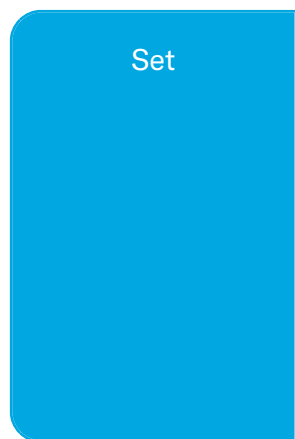
EN 795 Type D

CHARACTERISTICS

General characteristics

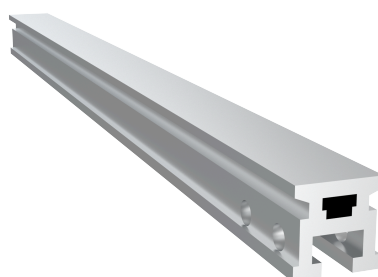
Reference	203509700013
Material	Anodised Aluminium AlMgSi 0,5
Weight	4,10 Kg
Dimensions	31x31x3000 mm

PLANS



AR RAÍL

Prodotto



Descrizione

- Componente della linea di vita ALURAIL.
- La sua missione principale è quella di essere il binario su cui scorre l'ancora di salvezza.

Standard

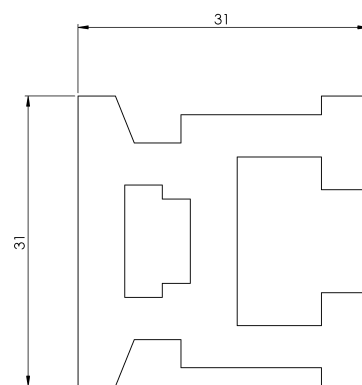
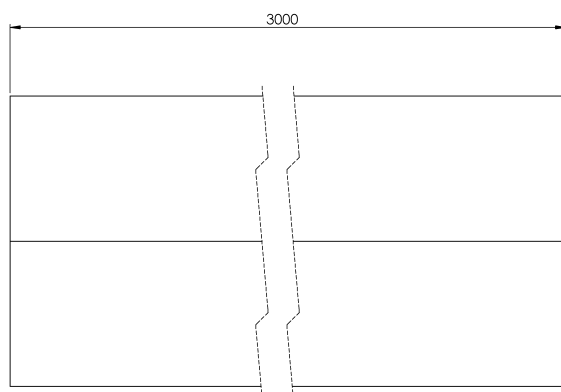
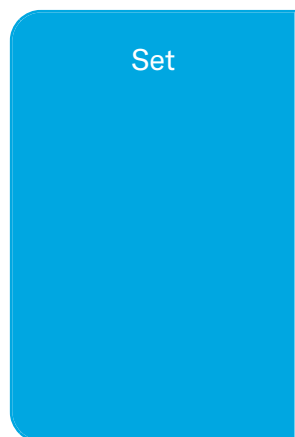
EN 795 Tipo D

CARATTERISTICHE

Caratteristiche generali

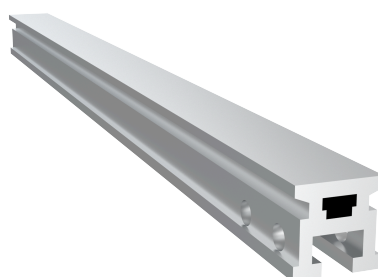
Riferimento	203509700013
Materiale	Alluminio anodizzato AlMgSi 0,5
Peso	4,10 Kg
Dimensioni	31x31x3000 mm

PIANI



AR RAÍL

Produto



Descrição

- Componente da linha de vida ALURAIL.
- A sua principal missão é ser o carril sobre o qual corre a linha de vida.

Padrão

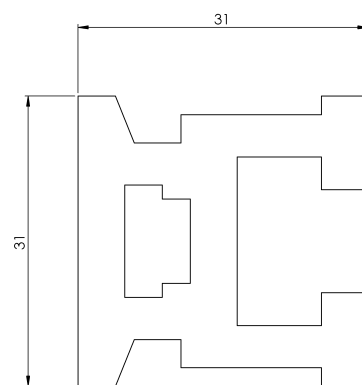
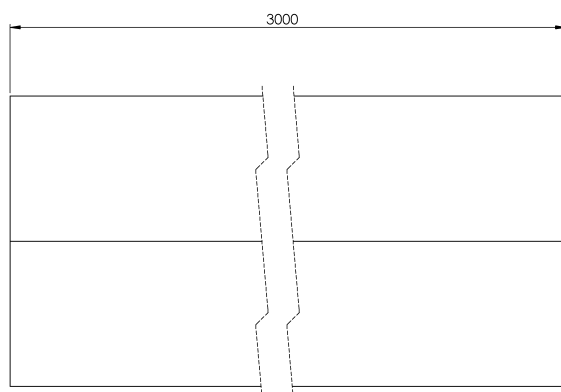
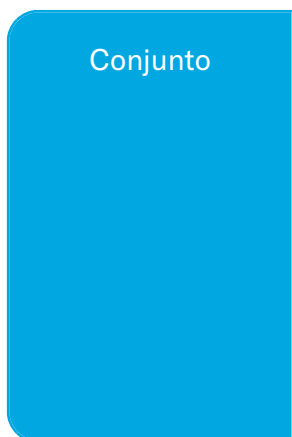
EN 795 Tipo D

CARACTERÍSTICAS

Caraterísticas gerais

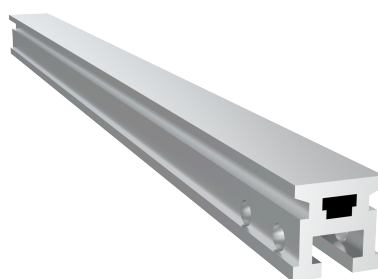
Referência	203509700013
Material	Alumínio anodizado AlMgSi 0,5
Peso	4,10 kg
Dimensões	31x31x3000 mm

PLANOS



AR RAÍL

Produit



Description

- Composant de la ligne de vie ALURAIL.
- Sa mission principale est d'être le rail sur lequel circule la ligne de vie.

Standard

EN 795 Type D

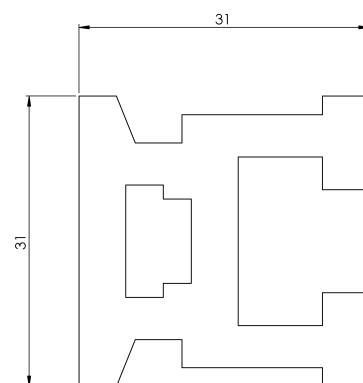
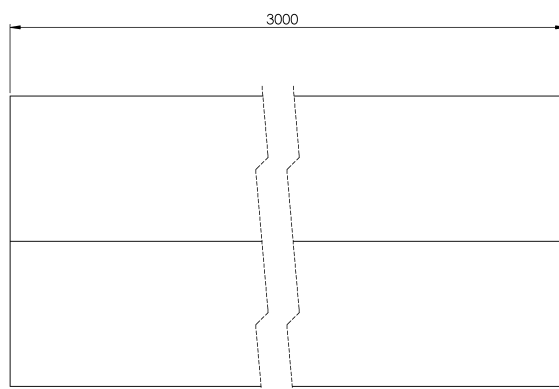
CARACTÉRISTIQUES

Caractéristiques générales

Référence	203509700013
Matériel	Aluminium anodisé AlMgSi 0,5
Poids	4,10 Kg
Dimensions	31x31x3000 mm

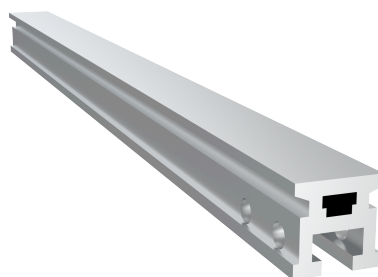
PLANS

Set (jeu de mots)



AR RAÍL

Produkt



Beschreibung

- Bestandteil der ALURAIL-Rettungsleine.
- Ihre Hauptaufgabe ist es, die Schiene zu sein, auf der die Lebensader verläuft.

Standard

EN 795 Typ D

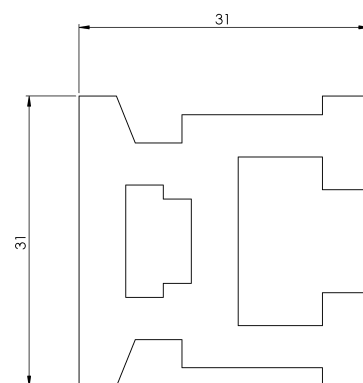
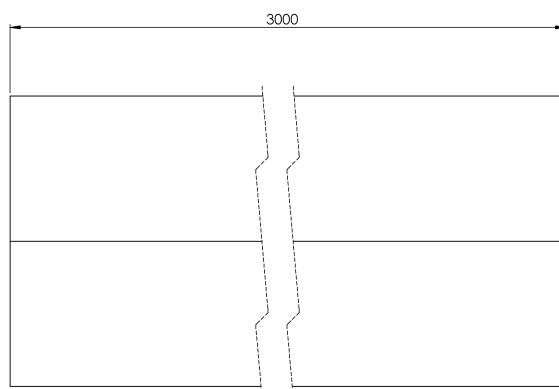
EIGENSCHAFTEN

Allgemeine Merkmale

Referenz	203509700013
Material	Eloxiertes Aluminium AlMgSi 0,5
Gewicht	4,10 kg
Abmessungen	31x31x3000 mm

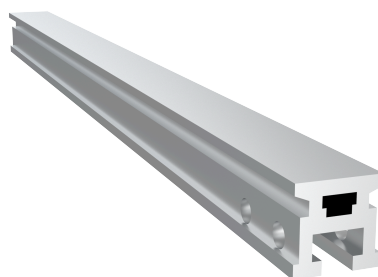
PLANEN

Einstellung



AR RAÍL

Produkt



Opis

- Element linii życia ALURAIL.
- Jego główną misją jest bycie szyną, po której biegnie linia życia.

Standard

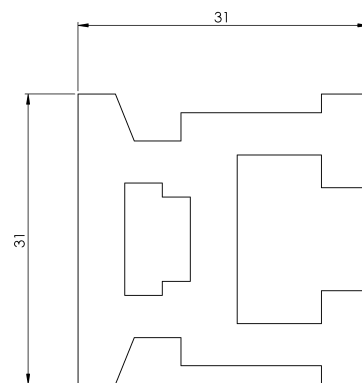
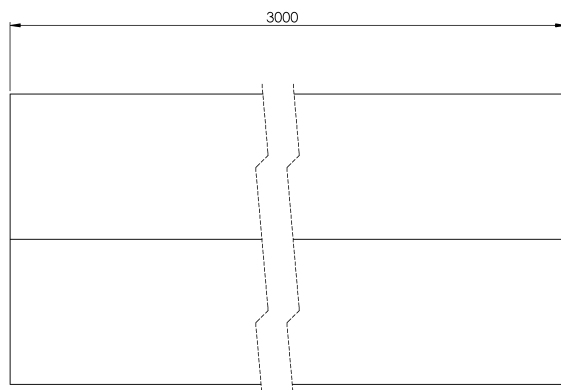
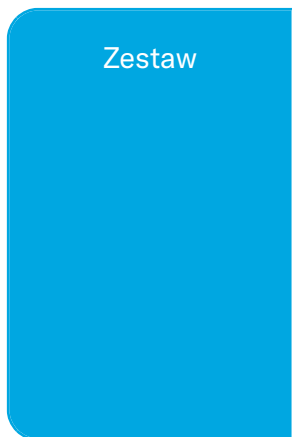
EN 795 Typ D

CHARAKTERYSTYKA

Ogólna
charakterystyka

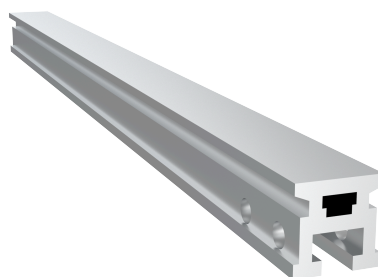
Odniesienie	203509700013
Materiał	Aluminium anodowane AlMgSi 0,5
Waga	4,10 kg
Wymiary	31x31x3000 mm

PLANY



AR RAÍL

Termék



Leírás

- Az ALURAIL életrajzi elem.
- Fő feladata, hogy a sín legyen, amelyen a mentővonal fut.

Standard

EN 795 D típus

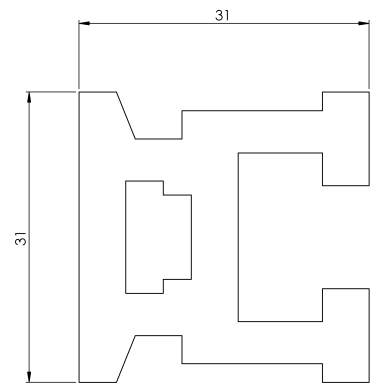
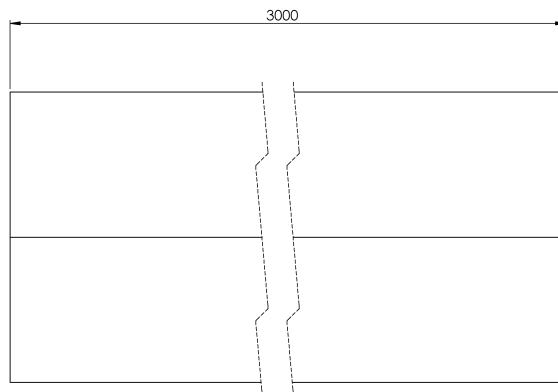
JELLEMZŐK

Általános jellemzők

Hivatkozás	203509700013
Anyag	Eloxált alumínium AlMgSi 0,5
Súly	4,10 kg
Méret	31x31x3000 mm

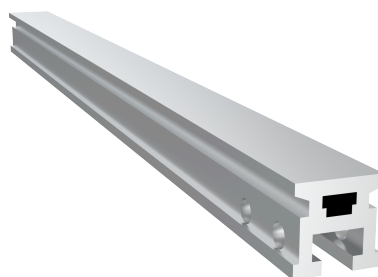
TERVEK

Állítsa be a



AR RAÍL

Produto



Descrição

- Componente da linha de vida ALURAIL.
- Sua principal missão é ser o trilho sobre o qual corre a linha de vida.

Padrão

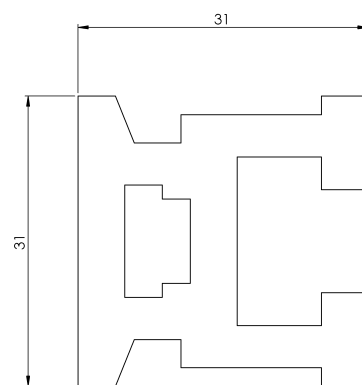
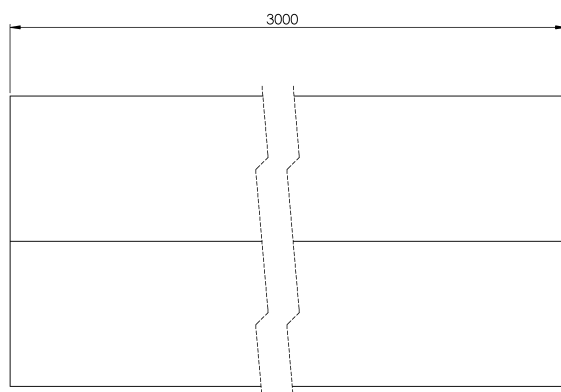
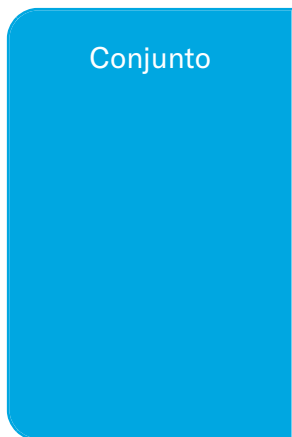
EN 795 Tipo D

CARACTERÍSTICAS

Características gerais

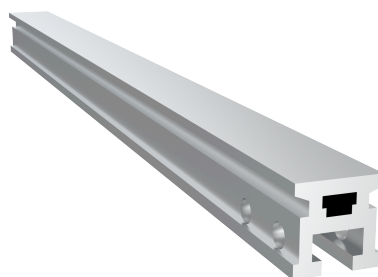
Referência	203509700013
Material	Alumínio anodizado AlMgSi 0,5
Peso	4,10 kg
Dimensões	31x31x3000 mm

PLANOS



AR RAÍL

Продукт



Описание

- Компонент на спасителната линия ALURAIL.
- Неговата основна задача е да бъде релсата, по която минава спасителната линия.

Стандартен

EN 795 Тип D

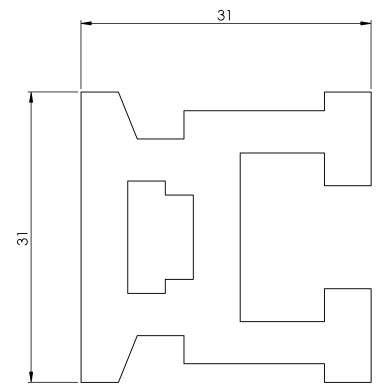
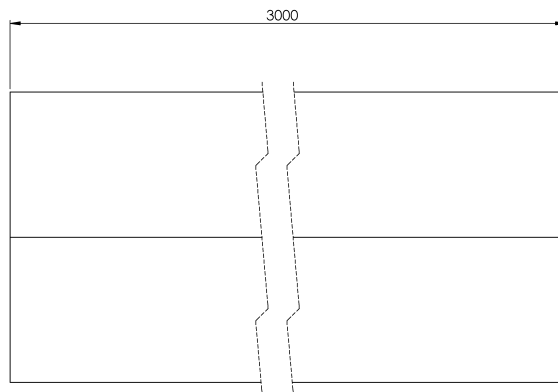
ХАРАКТЕРИСТИКИ

Общи характеристики

Справка	203509700013
Материал	Анодизиран алуминий AlMgSi 0,5
Тегло	4,10 кг
Размери	31x31x3000 мм

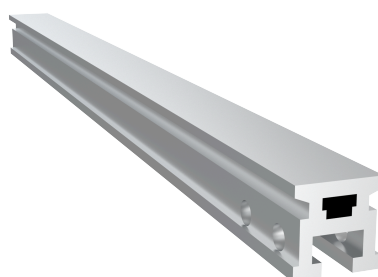
ПЛАНОВЕ

Задайте



AR RAÍL

Produkt



Beskrivning

- Komponent i ALURAIL-livlinan.
- Dess huvuduppgift är att vara den räls som livlinan löper på.

Standard

EN 795 Typ D

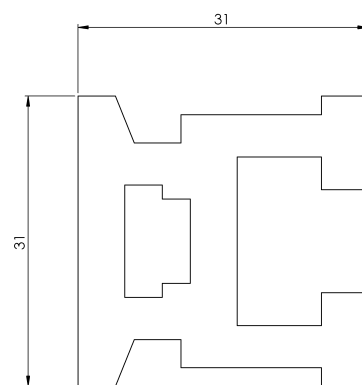
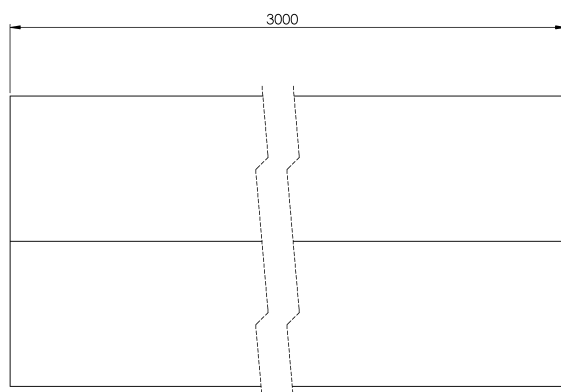
EGENSKAPER

Allmänna egenskaper

Reference (referens)	203509700013
Material	Anodiserat aluminium AlMgSi 0,5
Vikt	4,10 kg
Dimensioner	31x31x3000 mm

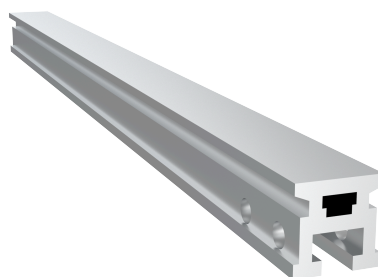
PLANER

Ställ in



AR RAÍL

Produkt



Popis

- Súčasť záchranného lana ALURAIL.
- Jeho hlavným poslaním je byť koľajnicou, po ktorej vedie záchranná sieť.

Štandard

EN 795 Typ D

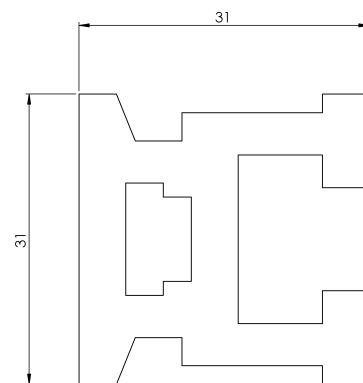
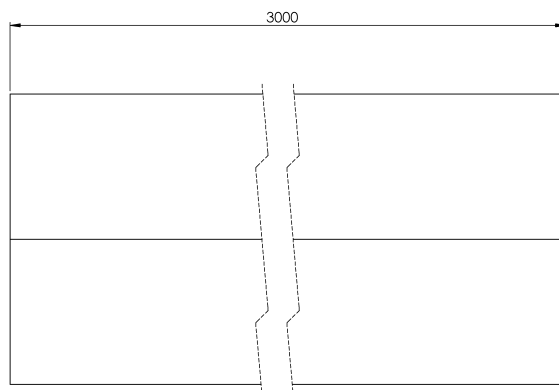
CHARAKTERISTIKA

Všeobecná charakteristika

Referencia	203509700013
Materiál	Eloxovaný hliník AlMgSi 0,5
Hmotnosť	4,10 kg
Rozmery	31x31x3000 mm

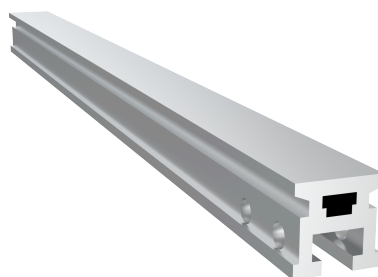
PLÁNY

Nastavenie



AR RAÍL

Produktas



Aprašymas

- ALURAIL gyvybinės linijos sudedamoji dalis.
- Pagrindinė jo misija - būti bėgiu, kuriuo eina gelbėjimo ratas.

Standartinis

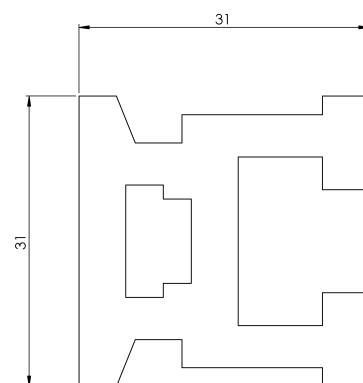
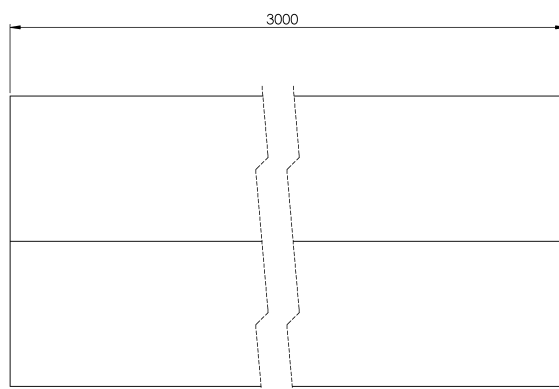
EN 795 D tipas

CHARAKTERISTIKOS

Bendrosios savybės	Nurodymai	203509700013
	Medžiaga	Anoduoto aliuminio AlMgSi 0,5
	Svoris	4,10 kg
	Matmenys	31x31x3000 mm

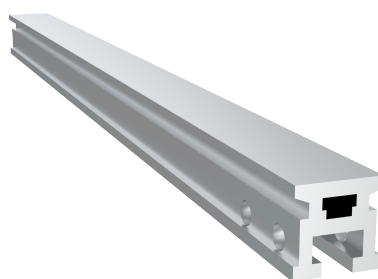
PLANAI

Nustatyti



AR RAÍL

Produkt



Beskrivelse

- Komponent i ALURAIL-livlinen.
- Hovedoppgaven er å være skinnen som livlinen går på.

Standard

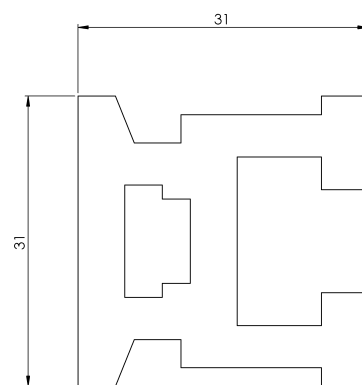
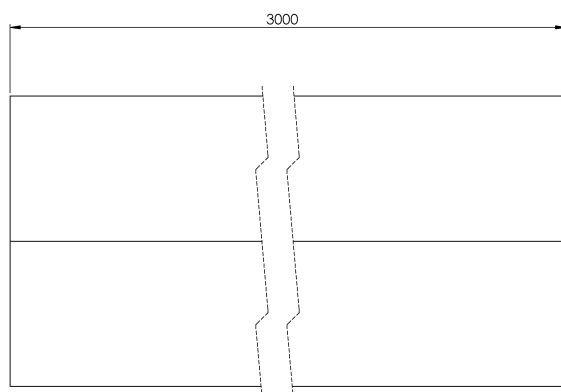
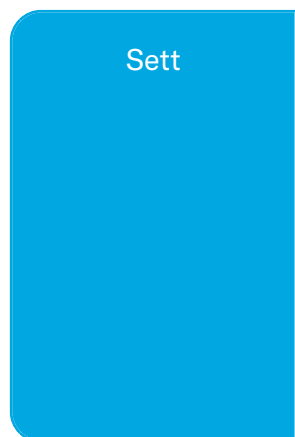
EN 795 Type D

EGENSKAPER

Generelle egenskaper

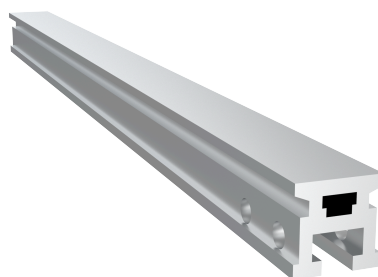
Referanse	203509700013
Materiale	Anodisert aluminium AlMgSi 0,5
Vekt	4,10 kg
Dimensjoner	31x31x3000 mm

PLANER



AR RAÍL

Produs



Descriere

- Componentă a liniei de viață ALURAIL.
- Misiunea sa principală este de a fi șina pe care trece linia vieții.

Standard

EN 795 Tip D

CARACTERISTICI

Caracteristici generale

Referință	203509700013
Material	Aluminiu anodizat AlMgSi 0,5
Greutate	4,10 Kg
Dimensiuni	31x31x3000 mm

PLANURI

