

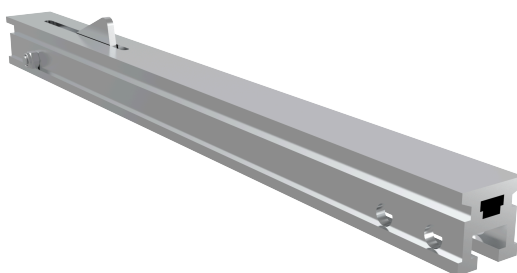


TOPE INTERIOR - AR TOPEINT

AR TOPEINT

FICHA TÉCNICA

Producto



Descripción

- Componente de la línea de vida ALURAIL.
- Su principal misión es evitar que el carro salga involuntariamente por los extremos de la línea.
- Se suministra integrado en un tramo de raíl de 40cm.

Norma

EN 795 Tipo D

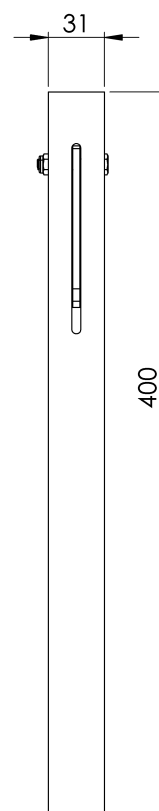
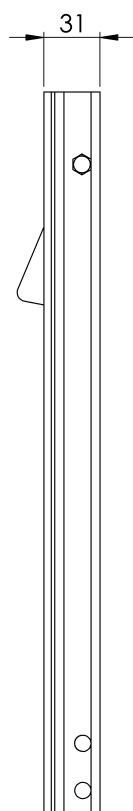
CARACTERÍSTICAS

Características generales

Referencia	203007400012
Material	Aluminio Anodizado AlMgSi 0,5
Peso	0,55 Kg
Dimensiones	31x31x400 mm

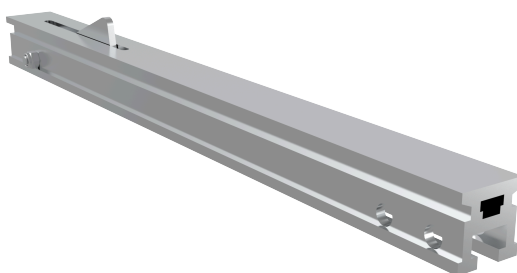
PLANOS

Conjunto



AR TOPEINT

Product



Description

- Component of the ALURAIL lifeline.
- Its main task is to prevent the trolley from unintentionally leaving the ends of the line.
- Supplied integrated in a 40cm rail section.

Standard

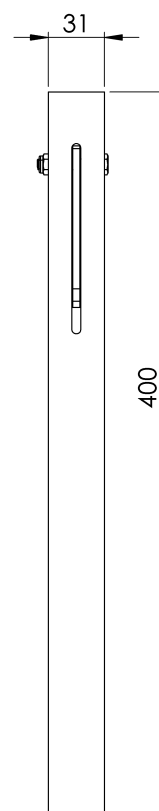
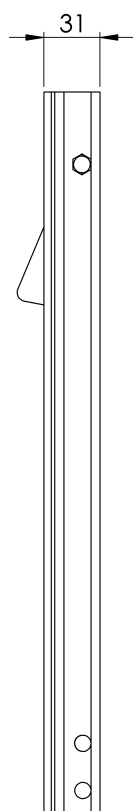
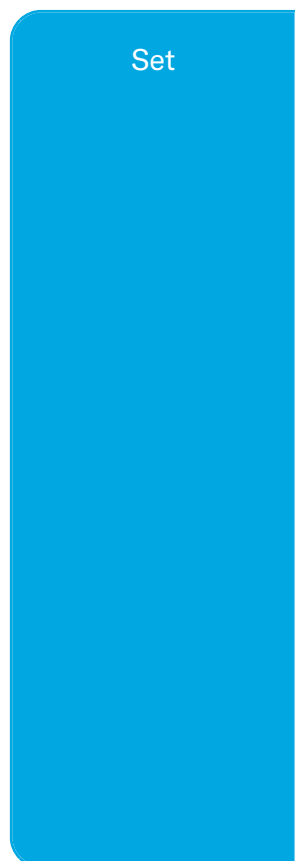
EN 795 Type D

CHARACTERISTICS

General characteristics

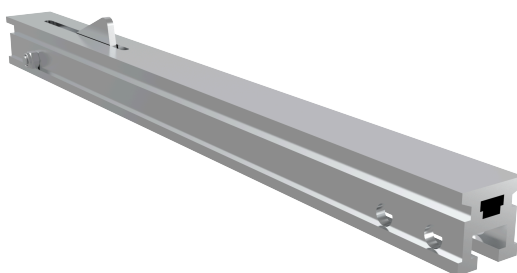
Reference	203007400012
Material	Anodised Aluminium AlMgSi 0,5
Weight	0,55 Kg
Dimensions	31x31x400 mm

PLANS



AR TOPEINT

Prodotto



Descrizione

- Componente della linea di vita ALURAIL.
- Il suo compito principale è quello di impedire che il carrello esca involontariamente dalle estremità della linea.
- Fornito integrato in una sezione di binario da 40 cm.

Standard

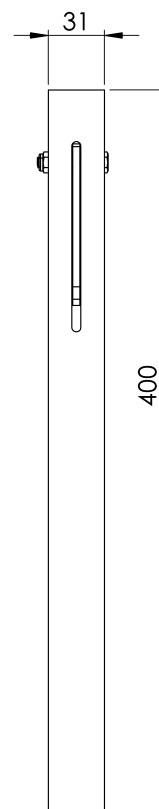
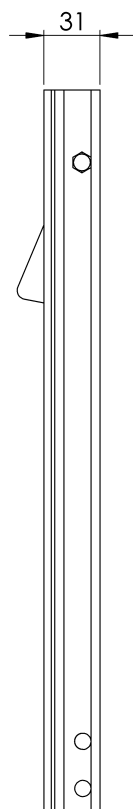
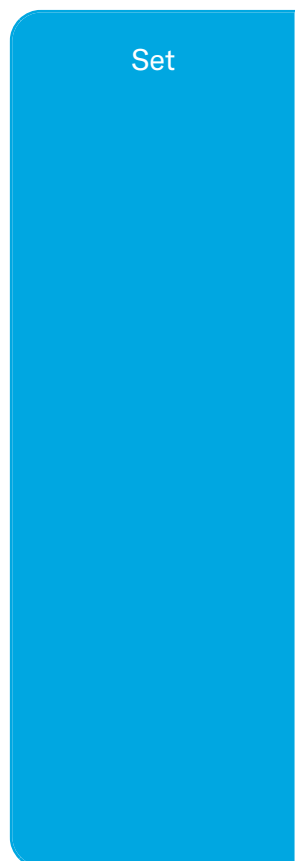
EN 795 Tipo D

CARATTERISTICHE

Caratteristiche generali

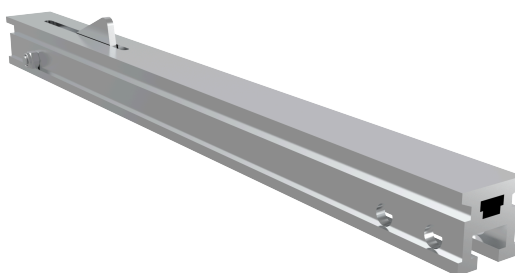
Riferimento	203007400012
Materiale	Alluminio anodizzato AlMgSi 0,5
Peso	0,55 Kg
Dimensioni	31x31x400 mm

PIANI



AR TOPEINT

Produto



Descrição

- Componente da linha de vida ALURAIL.
- A sua principal função é impedir que o carrinho saia involuntariamente dos extremos da linha.
- Fornecido integrado numa secção de carril de 40 cm.

Padrão

EN 795 Tipo D

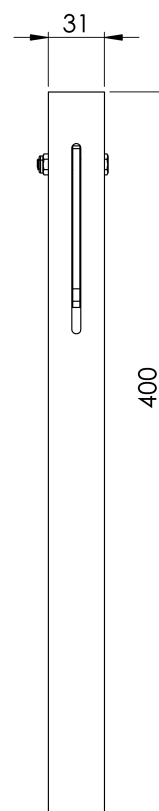
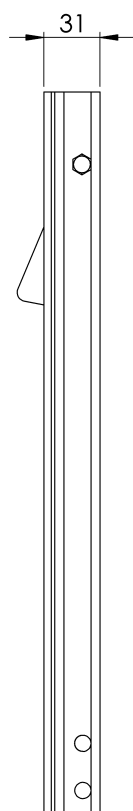
CARACTERÍSTICAS

Caraterísticas gerais

Referência	203007400012
Material	Alumínio anodizado AlMgSi 0,5
Peso	0,55 kg
Dimensões	31x31x400 mm

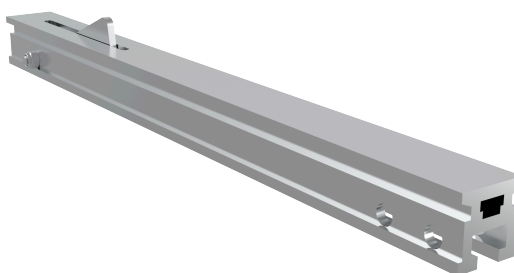
PLANOS

Conjunto



AR TOPEINT

Produit



Description

- Composant de la ligne de vie ALURAIL.
- Sa tâche principale est d'empêcher le chariot de quitter involontairement les extrémités de la ligne.
- Livré intégré dans une section de rail de 40 cm.

Standard

EN 795 Type D

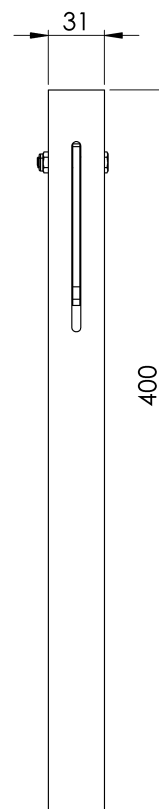
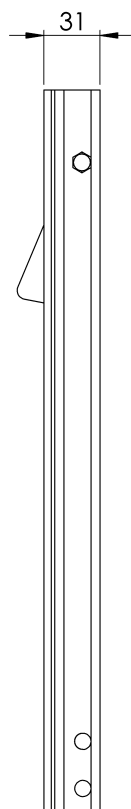
CARACTÉRISTIQUES

Caractéristiques générales

Référence	203007400012
Matériel	Aluminium anodisé AlMgSi 0,5
Poids	0,55 Kg
Dimensions	31x31x400 mm

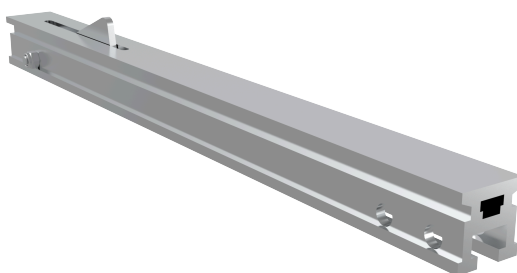
PLANS

Set (jeu de mots)



AR TOPEINT

Produkt



Beschreibung

- Bestandteil der ALURAIL-Rettungsleine.
- Seine Hauptaufgabe besteht darin, das unbeabsichtigte Verlassen der Strecke durch den Wagen zu verhindern.
- Die Lieferung erfolgt integriert in einem 40 cm langen Schienenstück.

Standard

EN 795 Typ D

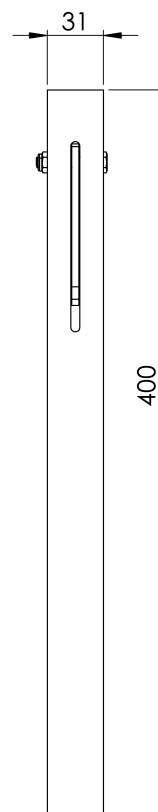
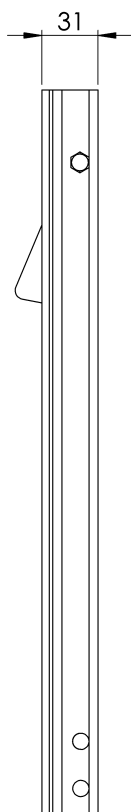
EIGENSCHAFTEN

Allgemeine Merkmale

Referenz	203007400012
Material	Eloxiertes Aluminium AlMgSi 0,5
Gewicht	0,55 kg
Abmessungen	31x31x400 mm

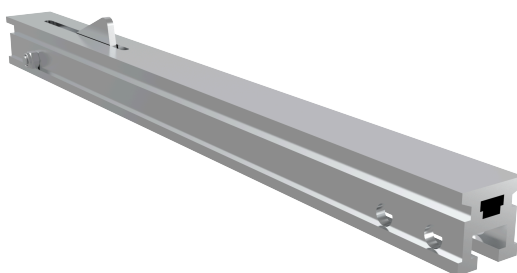
PLANEN

Satz



AR TOPEINT

Produkt



Opis

- Element linii życia ALURAIL.
- Jego głównym zadaniem jest zapobieganie niezamierzonemu opuszczeniu przez wózek końca linii.
- Dostarczany zintegrowany z szyną o długości 40 cm.

Standard

EN 795 Typ D

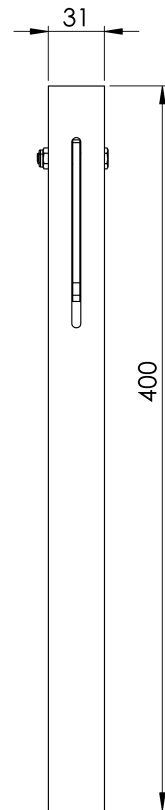
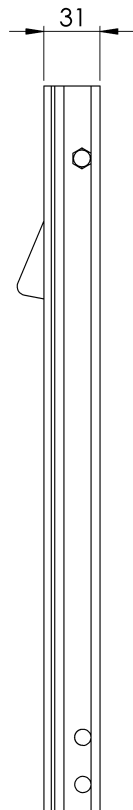
CHARAKTERYSTYKA

Ogólna charakterystyka

Odniesienie	203007400012
Materiał	Aluminium anodowane AlMgSi 0,5
Waga	0,55 kg
Wymiary	31x31x400 mm

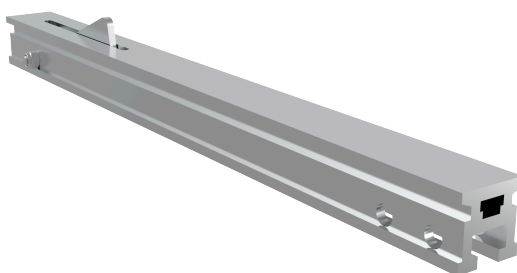
PLANY

Zestaw



AR TOPEINT

Termék



Leírás

- Az ALURAIL életrajzi elem.
- Fő feladata, hogy megakadályozza, hogy a kocsik akaratlanul elhagyják a vonal végét.
- 40 cm-es sínrelébe beépítve szállítjuk.

Standard

EN 795 D típus

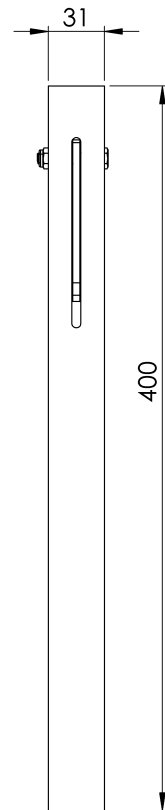
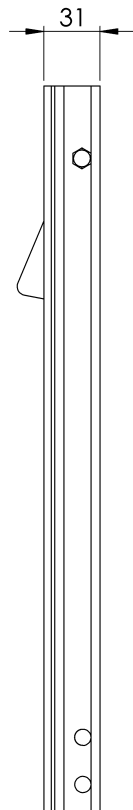
JELLEMZŐK

Általános jellemzők

Hivatkozás	203007400012
Anyag	Eloxált alumínium AlMgSi 0,5
Súly	0,55 kg
Méret	31x31x400 mm

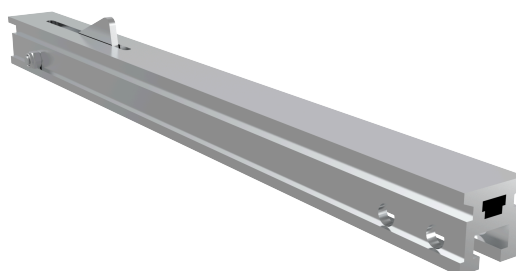
TERVEK

Állítsa be a



AR TOPEINT

Produto



Descrição

- Componente da linha de vida ALURAIL.
- Sua principal tarefa é evitar que o carrinho saia involuntariamente das extremidades da linha.
- Fornecido integrado em uma seção de trilho de 40 cm.

Padrão

EN 795 Tipo D

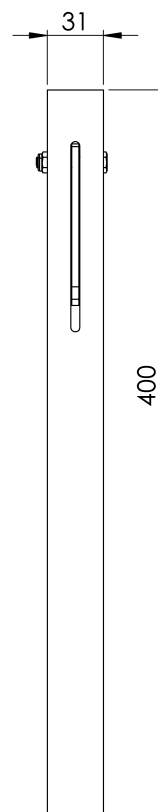
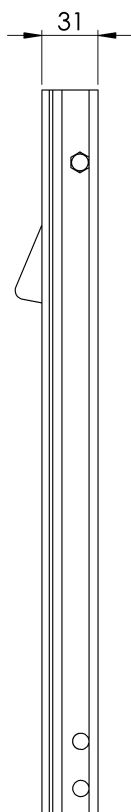
CARACTERÍSTICAS

Características gerais

Referência	203007400012
Material	Alumínio anodizado AlMgSi 0,5
Peso	0,55 kg
Dimensões	31x31x400 mm

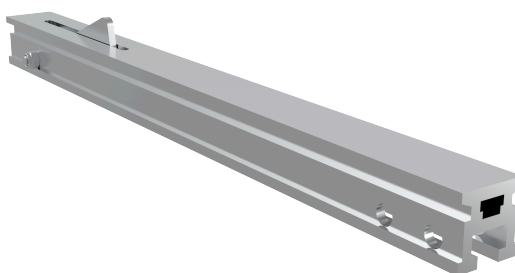
PLANOS

Conjunto



AR TOPEINT

Продукт



Описание

- Компонент на спасителната линия ALURAIL.
- Основната му задача е да предотврати неволното излизане на количката от края на линията.
- Доставка се интегриран в 40-сантиметрова релсова секция.

Стандартен

EN 795 Тип D

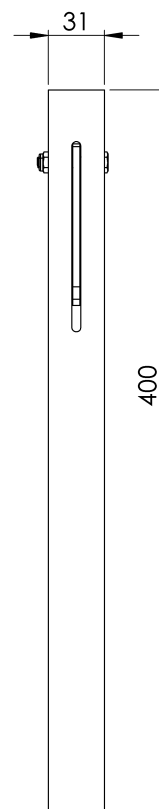
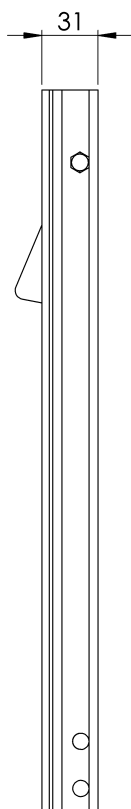
ХАРАКТЕРИСТИКИ

Общи характеристики

Справка	203007400012
Материал	Анодизиран алуминий AlMgSi 0,5
Тегло	0,55 кг
Размери	31x31x400 мм

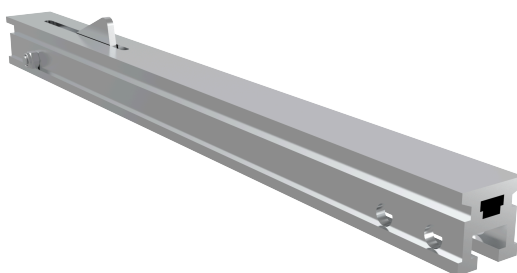
ПЛАНОВЕ

Задайте



AR TOPEINT

Produkt



Beskrivning

- Komponent i ALURAIL-livlinan.
- Dess huvuduppgift är att förhindra att vagnen oavsiktligt lämnar linjens ändar.
- Levereras integrerad i en 40 cm lång skensektion.

Standard

EN 795 Typ D

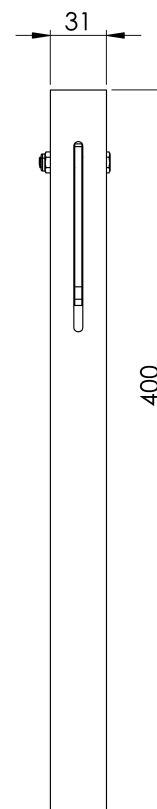
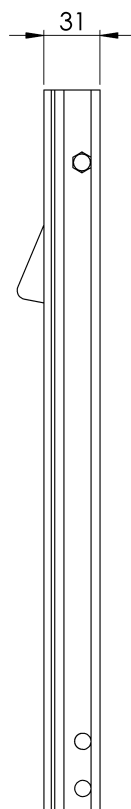
EGENSKAPER

Allmänna egenskaper

Reference (referens)	203007400012
Material	Anodiserat aluminium AlMgSi 0,5
Vikt	0,55 kg
Dimensioner	31x31x400 mm

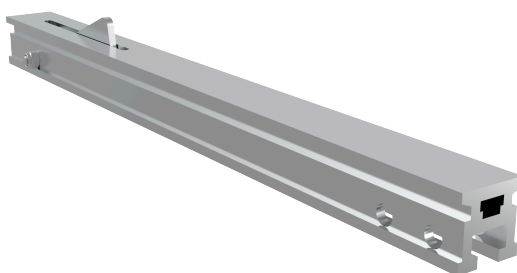
PLANER

Ställ in



AR TOPEINT

Produkt



Popis

- Súčasť záchranného lana ALURAIL.
- Jeho hlavnou úlohou je zabrániť tomu, aby vozík neúmyselne opustil konce trate.
- Dodáva sa integrovaný v 40 cm koľajničkovej časti.

Štandard

EN 795 Typ D

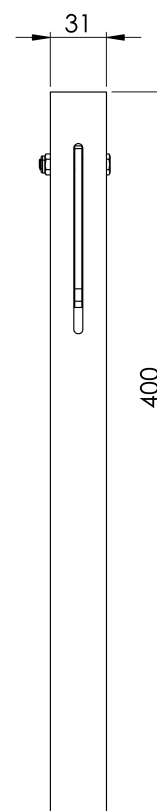
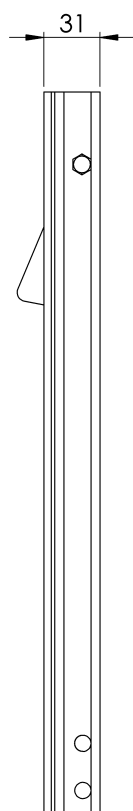
CHARAKTERISTIKA

Všeobecná charakteristika

Referencia	203007400012
Materiál	Eloxovaný hliník AlMgSi 0,5
Hmotnosť	0,55 kg
Rozmery	31x31x400 mm

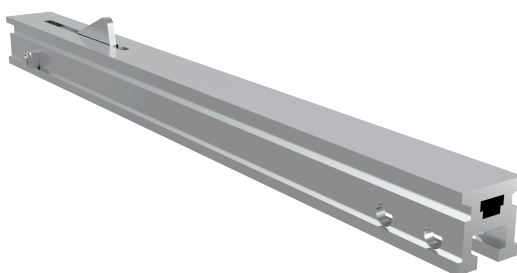
PLÁNY

Nastavenie



AR TOPEINT

Produktas



Aprašymas

- ALURAIL gyvybinės linijos sudedamoji dalis.
- Pagrindinė jo užduotis - neleisti vežimėliui netyčia išvažiuoti iš linijos galų.
- Tiekiamas integruotas į 40 cm ilgio bėgio sekciją.

Standartinis

EN 795 D tipas

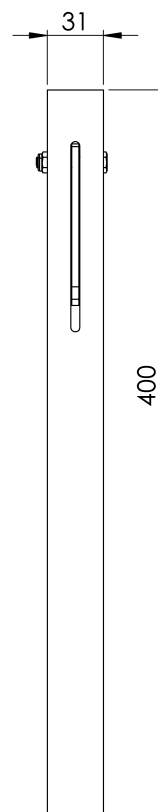
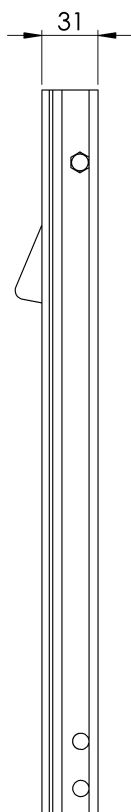
CHARAKTERISTIKOS

Bendrosios savybės

Nurodymai	203007400012
Medžiaga	Anoduoto aliuminio AlMgSi 0,5
Svoris	0,55 kg
Matmenys	31x31x400 mm

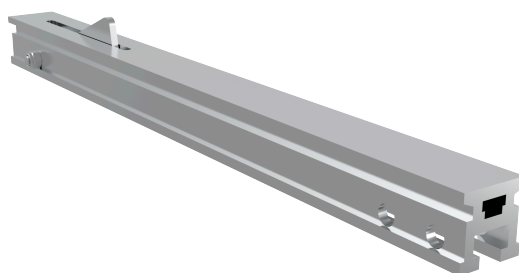
PLANAI

Nustatyti



AR TOPEINT

Produkt



Beskrivelse

- Komponent i ALURAIL-livlinen.
- Hovedoppgaven er å forhindre at vognen utilsiktet forlater endene av linjen.
- Leveres integrert i en 40 cm lang skinneseksjon.

Standard

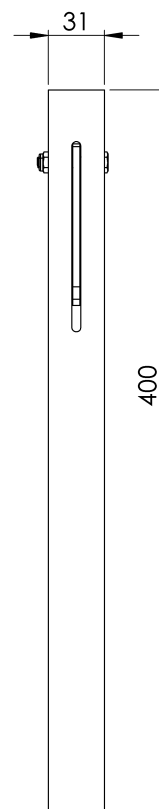
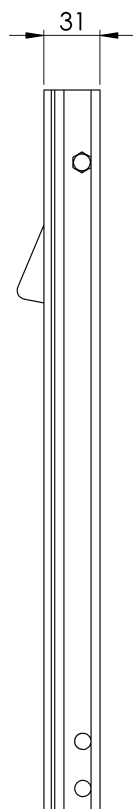
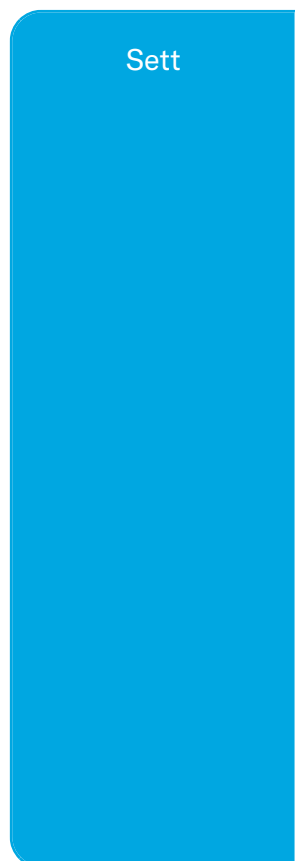
EN 795 Type D

EGENSKAPER

Generelle egenskaper

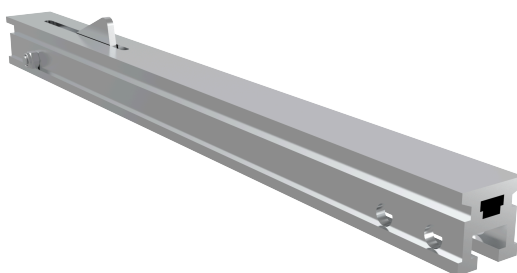
Referanse	203007400012
Materiale	Anodisert aluminium AlMgSi 0,5
Vekt	0,55 kg
Dimensjoner	31x31x400 mm

PLANER



AR TOPEINT

Produs



Descriere

- Componentă a liniei de viață ALURAIL.
- Sarcina sa principală este de a preveni ieșirea neintenționată a căruciorului de la capetele liniei.
- Livrat integrat într-o secțiune de șină de 40 cm.

Standard

EN 795 Tip D

CARACTERISTICI

Caracteristici generale

Referință	203007400012
Material	Aluminiu anodizat AlMgSi 0,5
Greutate	0,55 Kg
Dimensiuni	31x31x400 mm

PLANURI

