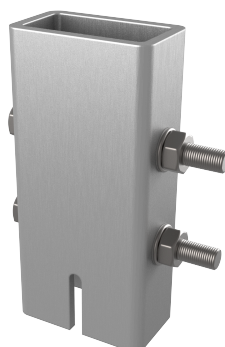


# EXTENSIÓN RAÍL - ARV EXTEN

# ARV EXTEN

FICHA TÉCNICA

## Producto



### Descripción

- Componente de la línea de vida ALURAIL V.
- Su principal misión es adaptar el ultimo tramo de raíl que permite el uso de ARV RAIL CONFI.

### Norma

EN 353 - 1

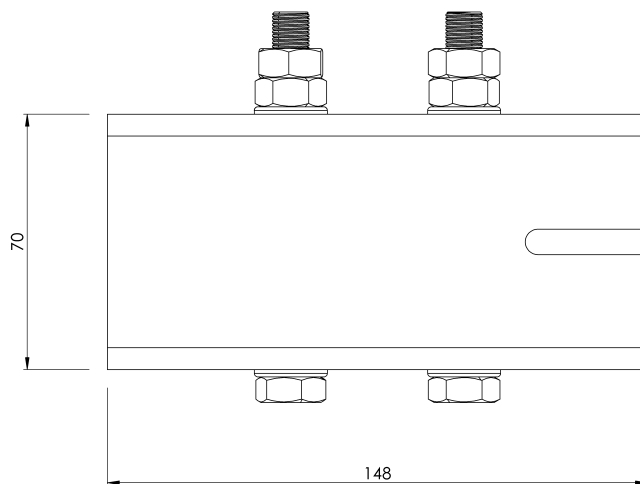
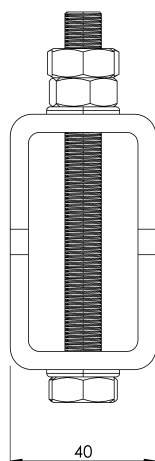
## CARACTERÍSTICAS

### Características generales

Referencia	203509700016
Material	Aluminio Anodizado AlMgSi 0,5
Peso	0,55 Kg
Dimensiones	40x71x150 mm

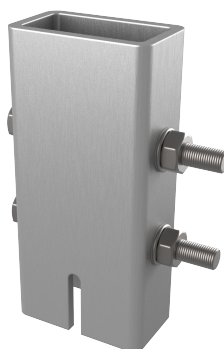
## PLANOS

Conjunto



# ARV EXTEN

## Product



### Description

- Lifeline component ALURAIL V.
- Its main task is to adapt the last section of rail to allow the use of ARV RAIL CONF.

### Standard

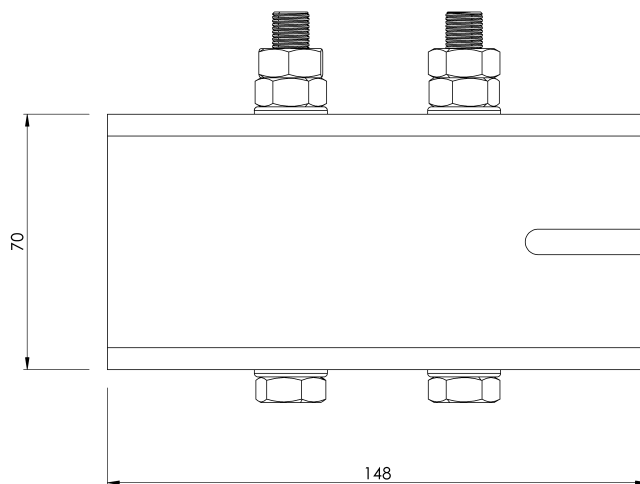
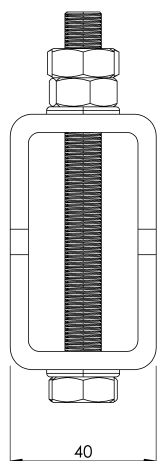
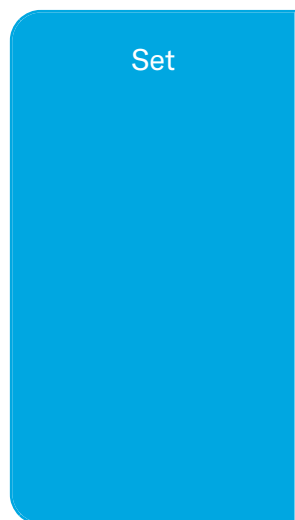
EN 353 - 1

## CHARACTERISTICS

### General characteristics

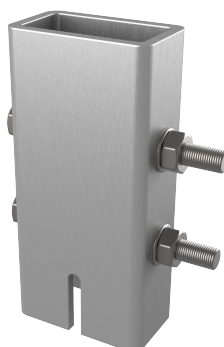
Reference	203509700016
Material	Anodised Aluminium AlMgSi 0,5
Weight	0,55 Kg
Dimensions	40x71x150 mm

# PLANS



# ESTENSIONE ARV

Prodotto



## Descrizione

- Componente della linea di vita ALURAIL V.
- Il suo compito principale è quello di adattare l'ultimo tratto di rotaia per consentire l'utilizzo di ARV RAIL CONF.

## Standard

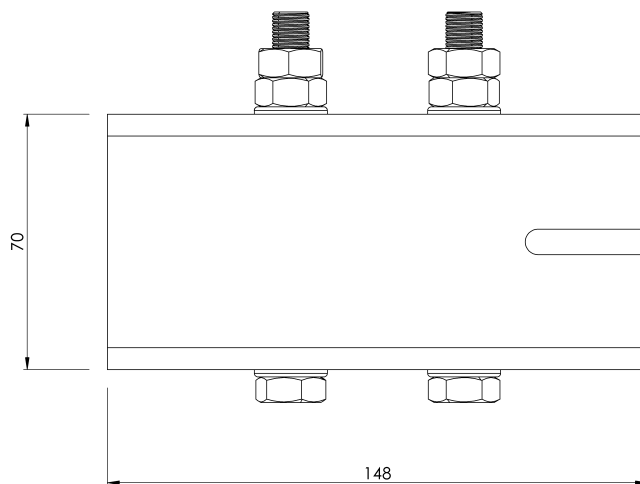
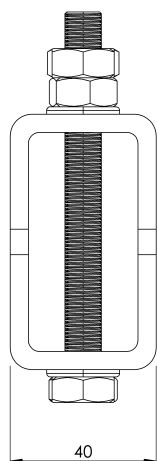
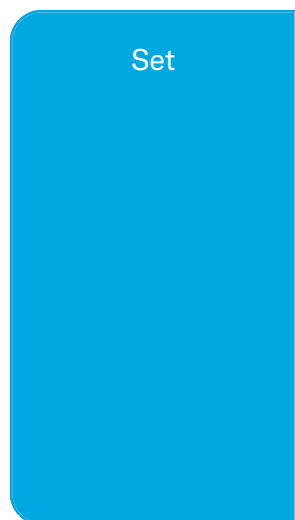
IT 353 - 1

# CARATTERISTICHE

## Caratteristiche generali

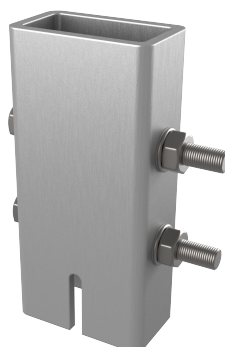
Riferimento	203509700016
Materiale	Alluminio anodizzato AlMgSi 0,5
Peso	0,55 Kg
Dimensioni	40x71x150 mm

# PIANI



# ARV EXTEN

## Produto



### Descrição

- Componente da linha de vida ALURAIL V.
- A sua principal função é adaptar a última secção do carril para permitir a utilização do ARV RAIL CONFÍ.

### Padrão

PT 353 - 1

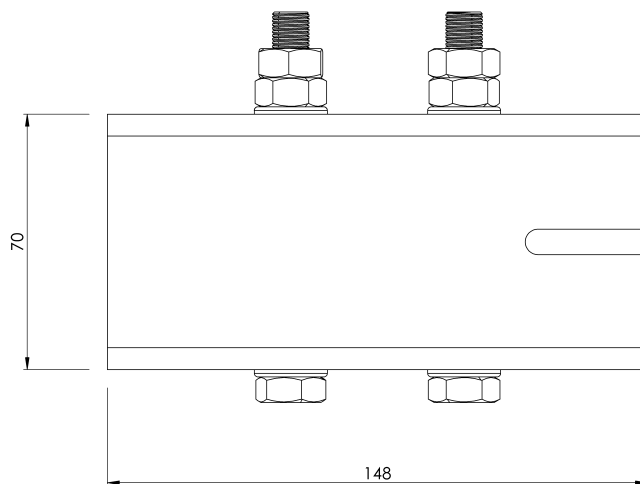
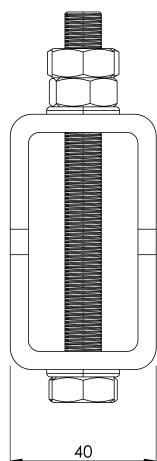
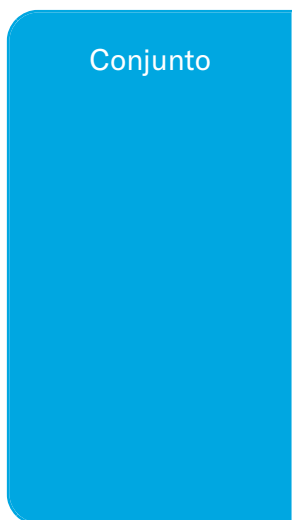
## CARACTERÍSTICAS

### Caraterísticas gerais

Referência	203509700016
Material	Alumínio anodizado AlMgSi 0,5
Peso	0,55 kg
Dimensões	40x71x150 mm

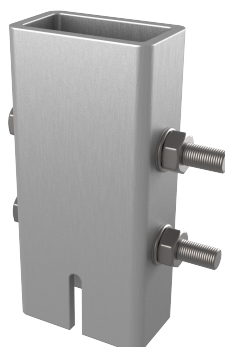


# PLANOS



# ARV EXTEN

## Produit



### Description

- Composant de la ligne de vie ALURAIL V.
- Sa tâche principale est d'adapter la dernière section du rail pour permettre l'utilisation d'ARV RAIL CONFIL.

### Standard

EN 353 - 1

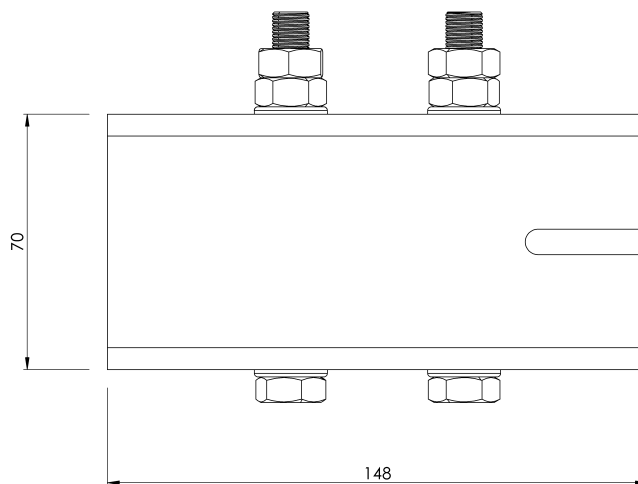
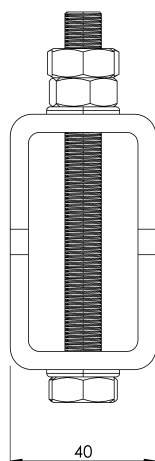
## CARACTÉRISTIQUES

### Caractéristiques générales

Référence	203509700016
Matériel	Aluminium anodisé AlMgSi 0,5
Poids	0,55 Kg
Dimensions	40x71x150 mm

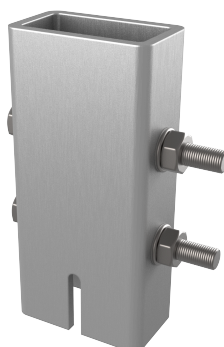
## PLANS

Set (jeu de mots)



# ARV EXTEN

## Produkt



### Beschreibung

- Lifeline-Bauteil ALURAIL V.
- Seine Hauptaufgabe ist die Anpassung des letzten Schienenstücks, um die Verwendung von ARV RAIL CONF1 zu ermöglichen.

### Standard

DE 353 - 1

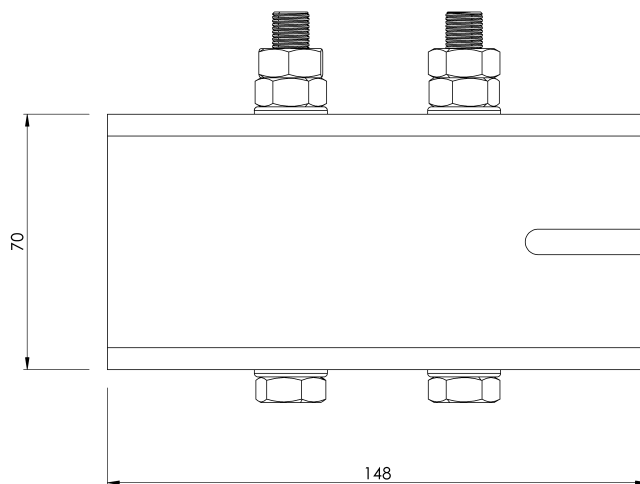
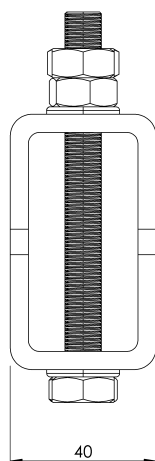
## EIGENSCHAFTEN

### Allgemeine Merkmale

Referenz	203509700016
Material	Eloxiertes Aluminium AlMgSi 0,5
Gewicht	0,55 kg
Abmessungen	40x71x150 mm

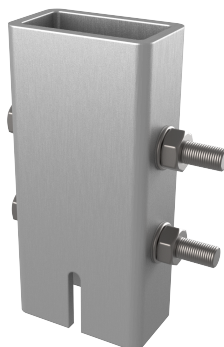
# PLANEN

Einstellung



# ARV EXTEN

## Produkt



### Opis

- Element linii życia ALURAIL V.
- Jego głównym zadaniem jest dostosowanie ostatniego odcinka szyny, aby umożliwić korzystanie z ARV RAIL CONFİ.

### Standard

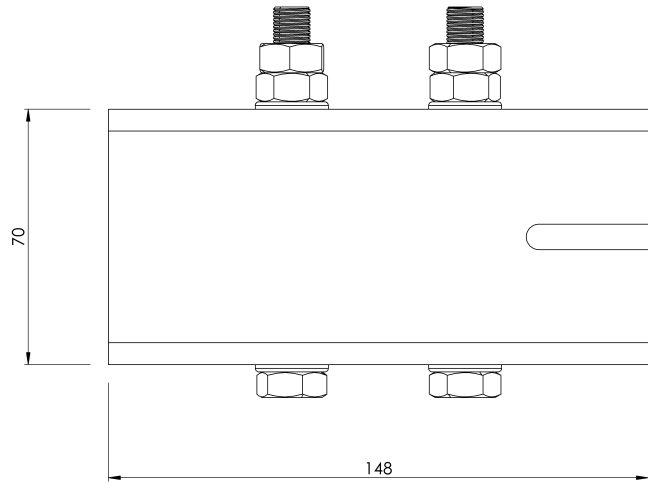
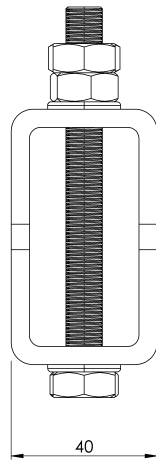
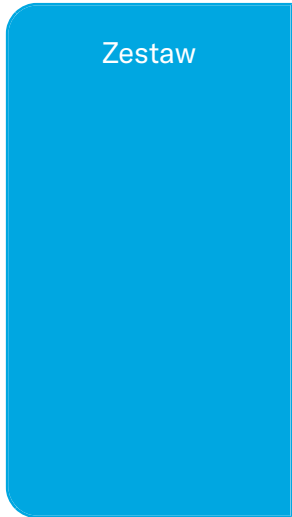
PL 353 - 1

## CHARAKTERYSTYKA

### Ogólna charakterystyka

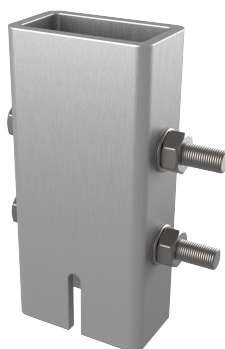
Odniesienie	203509700016
Materiał	Aluminium anodowane AlMgSi 0,5
Waga	0,55 kg
Wymiary	40x71x150 mm

# PLANY



# ARV EXTEN

## Termék



### Leírás

- Életvonal-összetevő ALURAIL V.
- Fő feladata az utolsó sínszakasz kiigazítása az ARV RAIL CONFÍ használatának lehetővé tétele érdekében.

### Standard

HU 353 - 1

## JELLEMZŐK

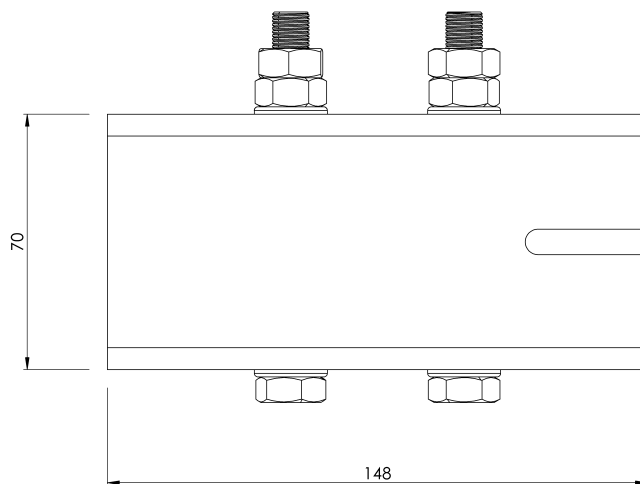
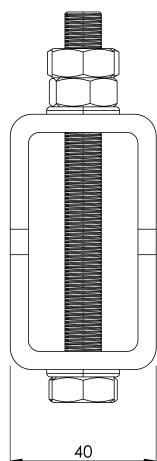
### Általános jellemzők

Hivatkozás	203509700016
Anyag	Eloxált alumínium AlMgSi 0,5
Súly	0,55 kg
Méret	40x71x150 mm



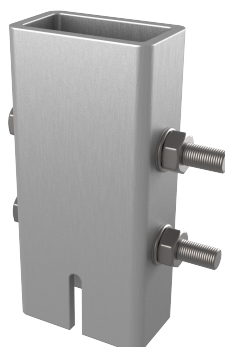
## TERVEK

Állítsa be a



# ARV EXTEN

## Produto



### Descrição

- Componente de linha de vida ALURAIL V.
- Sua principal tarefa é adaptar a última seção do trilho para permitir o uso do ARV RAIL CONFÍ.

### Padrão

EN 353 - 1

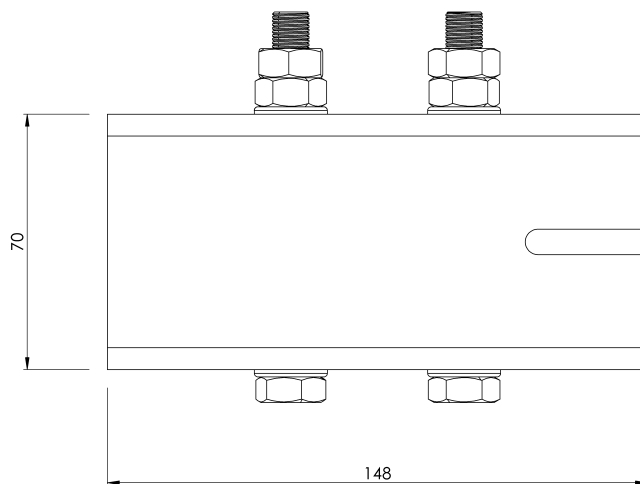
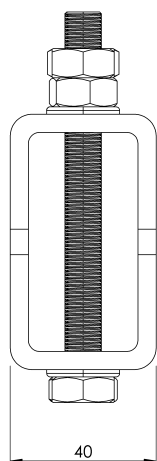
## CARACTERÍSTICAS

### Características gerais

Referência	203509700016
Material	Alumínio anodizado AlMgSi 0,5
Peso	0,55 kg
Dimensões	40x71x150 mm

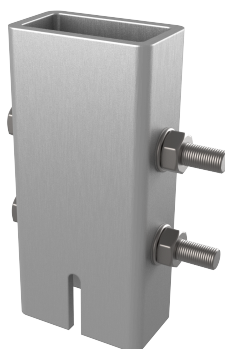
# PLANOS

Conjunto



# ARV EXTEN

Продукт



## Описание

- Компонент на спасителната линия ALURAIL V.
- Основната му задача е да адаптира последния участък от релсата, за да позволи използването на ARV RAIL CONF1.

## Стандартен

BG 353 - 1

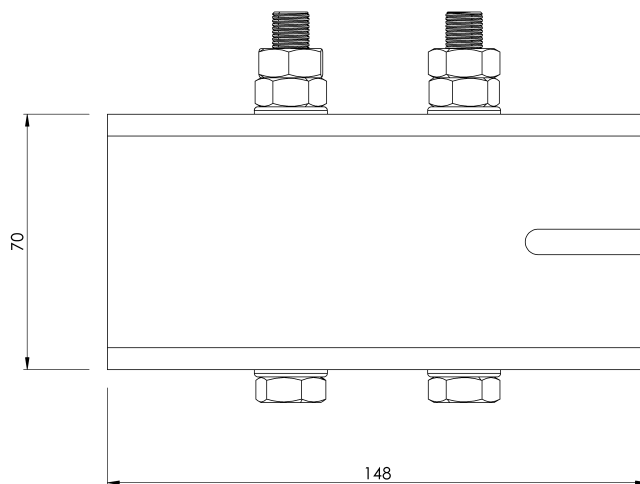
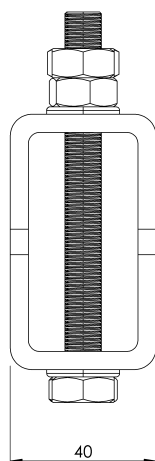
# ХАРАКТЕРИСТИКИ

## Общи характеристики

Справка	203509700016
Материал	Анодизиран алуминий AlMgSi 0,5
Тегло	0,55 кг
Размери	40x71x150 mm

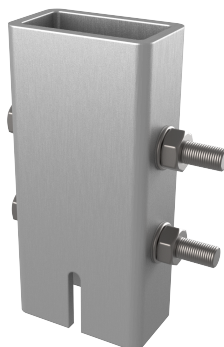
## ПЛАНОВЕ

Задайте



# ARV EXTEN

## Produkt



### Beskrivning

- Livlinjekomponent ALURAIL V.
- Dess huvuduppgift är att anpassa den sista delen av rälsen för att möjliggöra användning av ARV RAIL CONFİ.

### Standard

SV 353 - 1

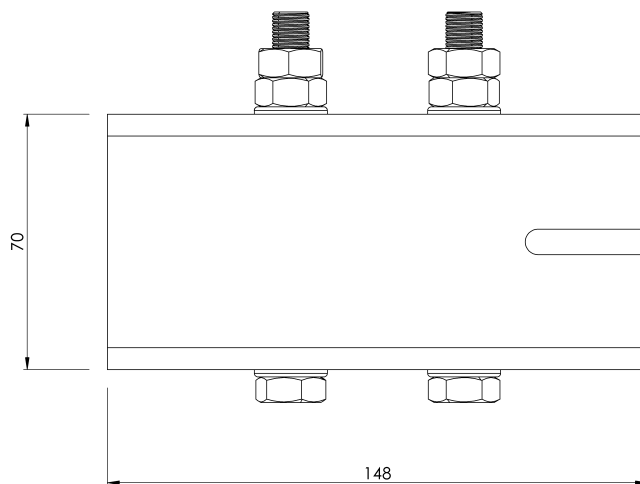
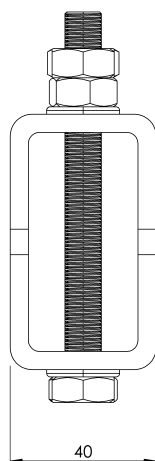
## EGENSKAPER

### Allmänna egenskaper

Reference (referens)	203509700016
Material	Anodiserat aluminium AlMgSi 0,5
Vikt	0,55 kg
Dimensioner	40x71x150 mm

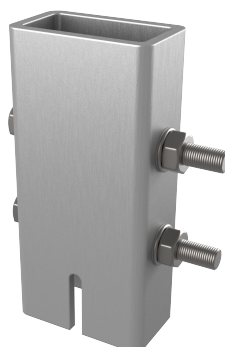
# PLANER

Ställ in



# ARV EXTEN

## Produkt



### Popis

- Záchranný komponent ALURAIL V.
- Jeho hlavnou úlohou je upraviť posledný úsek koľajnice tak, aby umožňoval použitie ARV RAIL CONF1.

### Štandard

SK 353 - 1

## CHARAKTERISTIKA

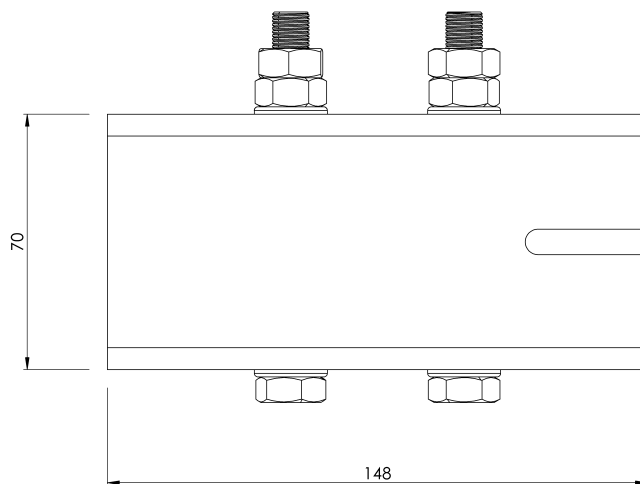
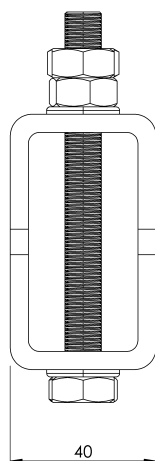
### Všeobecná charakteristika

Referencia	203509700016
Materiál	Eloxovaný hliník AlMgSi 0,5
Hmotnosť	0,55 kg
Rozmery	40x71x150 mm



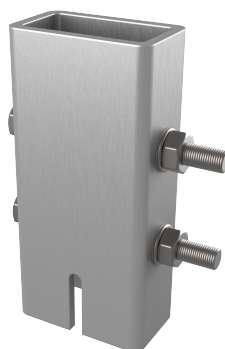
## PLÁNY

Nastavenie



# ARV EXTEN

## Produktas



### Aprašymas

- Gyvybinės linijos komponentas ALURAIL V.
- Pagrindinė jo užduotis - pritaikyti paskutinę bėgių atkarpą, kad būtų galima naudoti ARV RAIL CONFİ.

### Standartinis

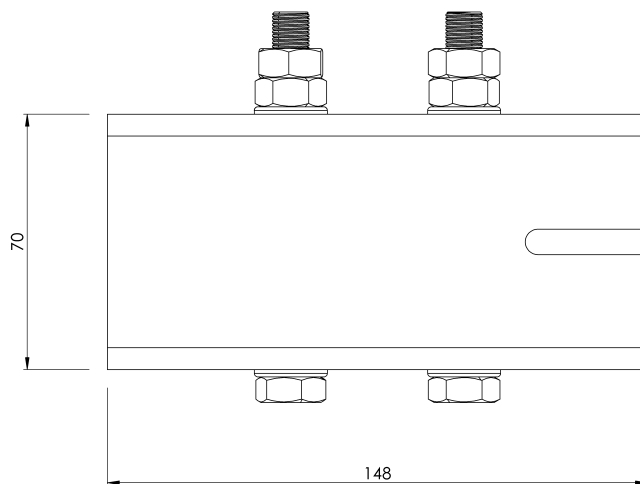
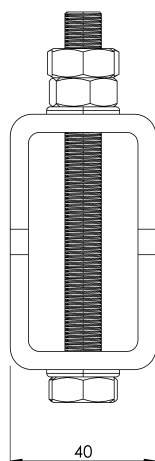
LT 353 - 1

## CHARAKTERISTIKOS

Bendrosios savybės	Nurodymai	203509700016
	Medžiaga	Anoduoto aliuminio AlMgSi 0,5
	Svoris	0,55 kg
	Matmenys	40x71x150 mm

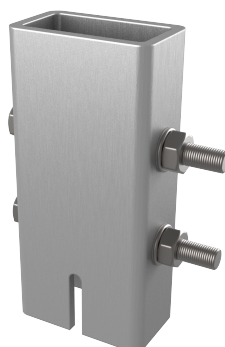
## PLANAI

Nustatyti



# ARV EXTEN

## Produkt



### Beskrivelse

- Lifeline-komponent ALURAIL V.
- Hovedoppgaven er å tilpasse den siste delen av skinnen slik at ARV RAIL CONF1 kan brukes.

### Standard

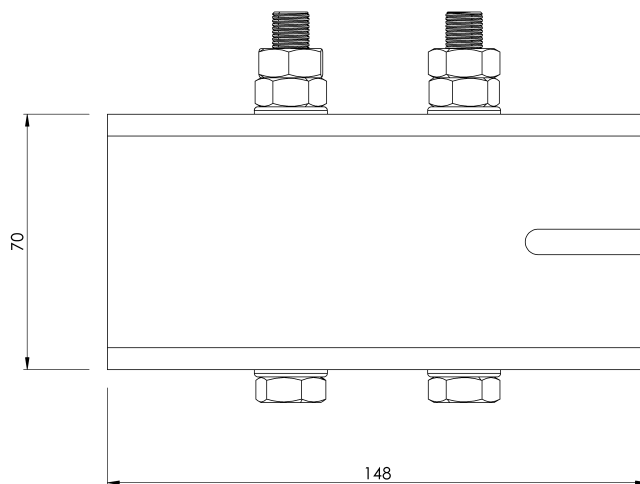
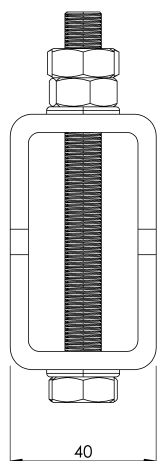
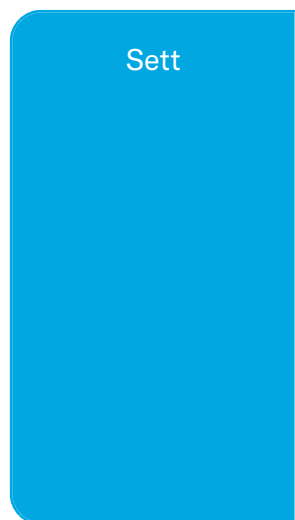
EN 353 - 1

## EGENSKAPER

### Generelle egenskaper

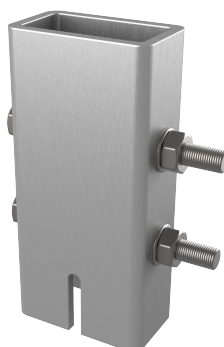
Referanse	203509700016
Materiale	Anodisert aluminium AlMgSi 0,5
Vekt	0,55 kg
Dimensjoner	40x71x150 mm

# PLANER



# ARV EXTEN

Produs



## Descriere

- Componentă de linie de viață ALURAIL V.
- Sarcina sa principală este de a adapta ultima secțiune de șină pentru a permite utilizarea ARV RAIL CONFİ.

## Standard

RO 353 - 1

# CARACTERISTICI

## Caracteristici generale

Referință	203509700016
Material	Aluminiu anodizat AlMgSi 0,5
Greutate	0,55 Kg
Dimensiuni	40x71x150 mm

## PLANURI

